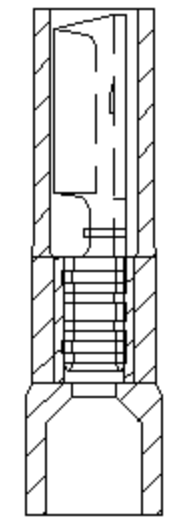
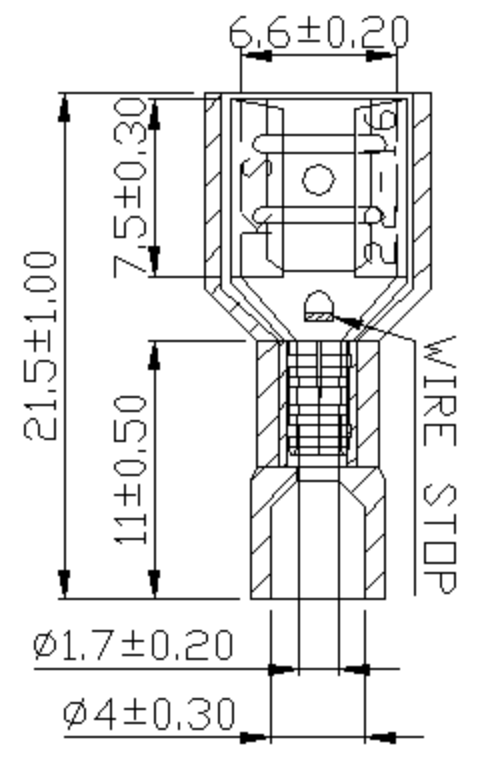


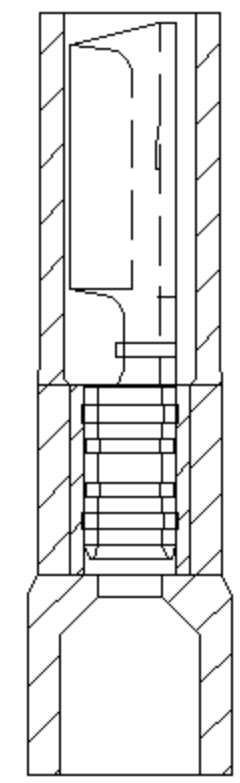
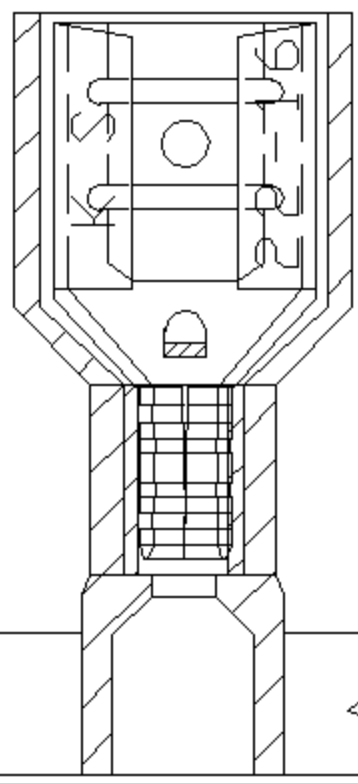
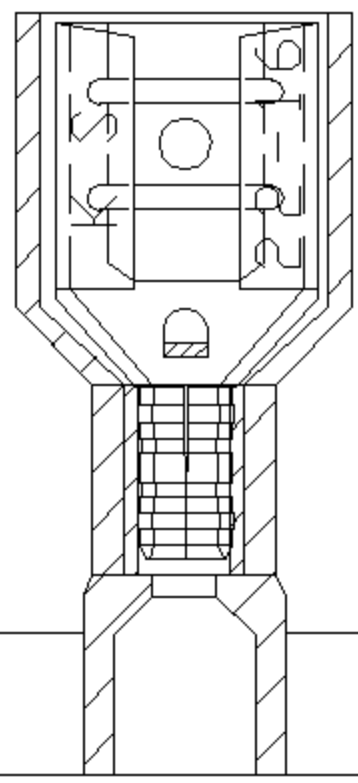
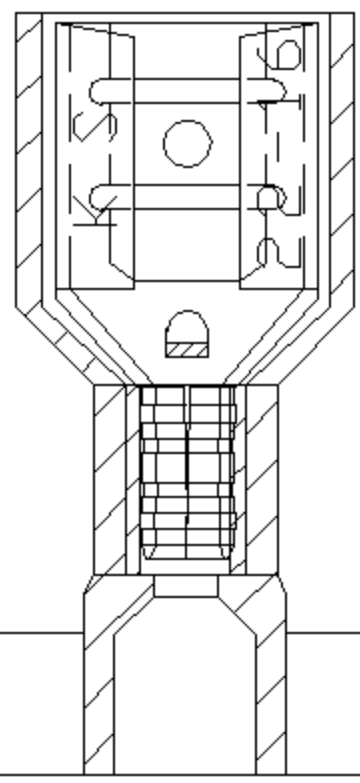
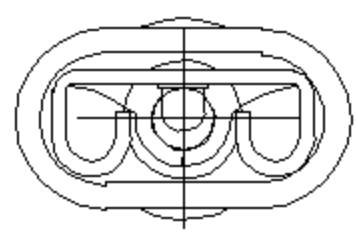
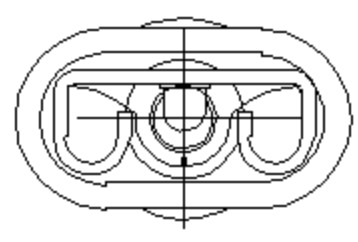
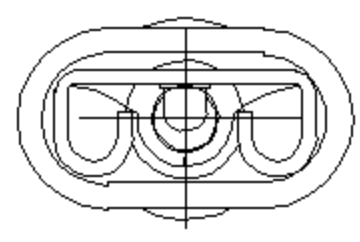
REV	DESCRIPTION	DATE
-----	-------------	------



S:2/1

- NOTE:
1. MAXIMUM ELECTRIC CURRENT :

A.W.G.	22	20	18	16
AMP.	3	4	7	10
 2. MAXIMUM ELECTRICAL RATING : 105°C 600 VOLTS MAX.
 3. INSULATION MATERIAL : NYLON
 4. INSULATION COLOR : RED
 5. TERMINAL MATERIAL : BRASS
 6. WIRE RANGE : 22-16 A.W.G.(0.5-1.5 mm²)
 7. TERMINALS SURFACE TREATMENT : TIN PLATED
 8. NEBA TAB : 0.032 * 0.250 (0.8 * 6.35)
 9. DOUBLE CRIMP : WITH SHORT COPPER SLEEVE ON BARREL
 10. THICKNESS : 0.40 mm



15.9±0.50

Tolerance Unless Otherwise Specified	
0 > 6 mm ± 0.20	ANGLE
6 > 18 mm ± 0.30	0° ° REF ±
18 > 30 mm ± 0.40	° ° ±
30 > 75 mm ± 0.50	° ° ±

NAME	NYLON-INSULATED DOUBLE CRIMP FEMALE DISCONNECTORS - PS SERIES	UNIT	mm	
PART NO.	FDNYDX1-250-PS	MATERIAL	-----	APPROVE
NUMBER	KA-95556-C	SCALE	SHEET	PAGE
DATE	2066/06/09	3/1	1-0	10F1
				DRAWN

KST K.S. TERMINALS INC.