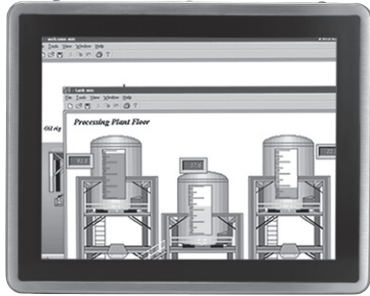


GOT817-834

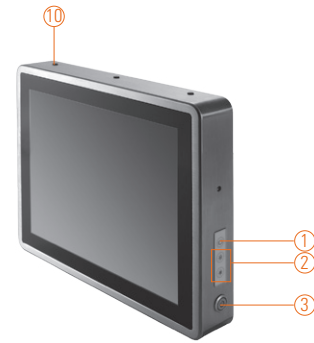
17" SXGA TFT IP66-rated Stainless Steel Fanless PCT (or Resistive Touch) Panel Computer with Intel® Atom™ Processor E3827 and Flat Bezel Design (-20°C ~ +55°C)

NEW

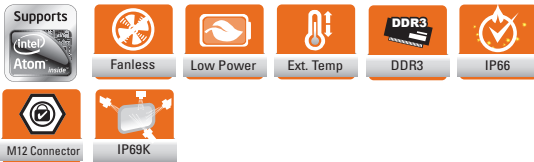


waterproof, dustproof ventilation valve

1. Backlight switch
2. Brightness adjust
3. Power switch (ATX)
4. DC power connector (A-coded M12)
5. COM 1 (RS-232/422/485) (A-coded M12)
6. COM 2 (RS-232/422/485) (A-coded M12)
7. Ethernet (X-coded)
8. USB 2.0 x 2 (A-coded M12)
9. USB 2.0 x 2 (A-coded M12)
10. Wi-Fi/3G antenna x 3 (optional, only for RF version)



▲ Side view



Introduction

The 17-inch GOT817-834 is specially designed for food processing applications. Its IP66-rated stainless steel housing protects entire system from damage of water, powder and dust. It also outfits wide operating temperature range of -20°C ~ +55°C. Thus, this robust unit is best suited for extreme humidity, dusty or wet spaces in food factories or kitchens and more harsh applications.

Full IP66 and IP69K compliance

The GOT8175 adopts a water/dust-proof housing design with five IP66-rated connectors, M12 I/O connectors and IP69K compliance that ensures the product's ability to resist ingress of high temperature and high pressure water. It passed entire system IP66 test by SGS, and verified salt mist test. Additionally, it was tested by a spray nozzle with high temperature water (80°C), a flow rate of 14–16 L/min and a nozzle hold with distance 10–15cm away from the device at angles of 0°, 30°, 60° and 90° for 30 seconds. The outstanding GOT817 stainless touch panel PC is qualified to meet harsh environment applications.

Wide temp. (-20°C ~ +55°C) & anti-vibration (2G) design

The rugged 17" industrial stainless touch panel PC GOT817-834 featuring fanless and noiseless design supports a wide operating temperature range from -20°C to +55°C. Besides, the patent of anti-vibration for SSD ensures system reliability and stability.

Features

- 17" SXGA TFT LCD flat bezel-projected capacitive (or resistive) touch
- IP66/IP69K-rated (NEMA4X) water/dust/corrosion-proof design
- Full stainless steel enclosure with type 316
- Wide operating temperature range of -20°C ~ +55°C
- Fanless system with Intel® Atom™ processor E3827 1.75 GHz
- Wireless network connectivity
- Wide range 12~36VDC
- Supports suspension and VESA mount
- M12 type I/O connectors for harsh environments

Specifications

Enclosure	Stainless type 316		
LCD Panel	Display Type	17" SXGA TFT LCD	
	Brightness (cd/m ²)	350 nits	
	Resolution	1280 x 1024	
	Viewing Angle (H/V)	170°/160°	
Main System	CPU	Intel® Atom™ processor E3827 1.75 GHz (Bay Trail)	
	Chipset	SoC Integrated	
	System Memory	2 x 204-pin DDR3L-1333 SO-DIMM dual channel max. up to 8 GB	
	BIOS	AMI with Axiomtek standard features; such as, SmartView, Ethernet Boot ROM (RPL & PXE), customer CMOS backup	
	Storage	1 x 2.5" SSD 1 x CFast™	
	Watchdog Timer	255 levels, 1~255 sec.	
	Onboard Graphics	Integrated in Intel® GFX	



Specifications

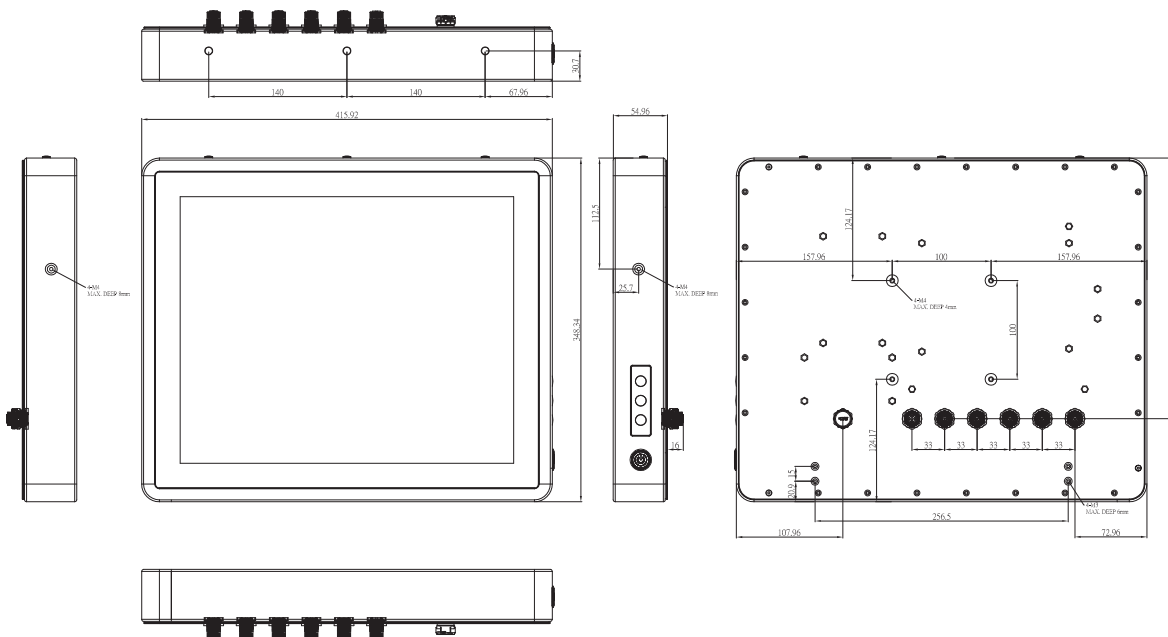
I/O Connector	2 x RS-232/422/485 (default RS-232, A-Coded) 4 x USB 2.0 (A-Coded) 1 x 10/100/1000Mbps Ethernet (X-Coded)
Expansion Interface	2 x PCI Express Mini Card slot
Touchscreen	5-wire resistive touch or projected capacitive multi-touch
Power Supply	Power input 12-36VDC
Power Consumption	50W
Dimensions	415.92 mm (16.37") (W) x 54.96 mm (2.16") (D) x 348.34 mm (13.71") (H)
Packing Dimensions	250 mm (9.84") (W) x 585 mm (23.03") (D) x 615 mm (24.21") (H)
Weight (net/gross)	7.04 kg(15.52 lb)/10.3 kg (22.71 lb)
Environment	Operating temperature: -20°C ~ +55°C (-4°F ~ +131°F) Storage Temperature: -30°C ~ +70°C (-22°F ~ +158°F) Relative humidity: 10% ~ 95% @ 40°C, non-condensing Operation vibration: 2G, 5 ~ 500Hz, random for 2.5" SSD 2G, 5 ~ 500Hz, random for CFast™
Certificate	CE

* W.T.: Wide Temperature. All W.T. supported products have to be sorted by Axiomtek.

Optional Accessories

594B8122100E	Water-proof COM port cable (1.8 m)
594B8122820E	Water-proof USB cable (1.8 m)
594B8152710E	Water-proof LAN cable (1.8 m)
50964A23000E	72W/24V power adapter with M12 connector

Dimensions



Ordering Information

Sunlight readable type	
GOT817-834-C-DC	17" SXGA fanless IP66-rated stainless steel touch panel computer with Intel® Atom™ E3827, projected capacitive touch screen, 12-36VDC power input and flat-bezel design
GOT817-834-C-RF-DC	17" SXGA fanless IP66-rated stainless steel touch panel computer with Intel® Atom™ E3827, projected capacitive touch screen, 12-36VDC power input, flat-bezel design and Wi-Fi or 3G
GOT817-834-R-DC	17" SXGA fanless IP66-rated stainless steel touch panel computer with Intel® Atom™ E3827, 5-wire flat resistive touch screen, 12-36VDC power input and flat-bezel design
GOT817-834-R-RF-DC	17" SXGA fanless IP66-rated stainless steel touch panel computer with Intel® Atom™ E3827, 5-wire flat resistive touch screen, 12-36VDC power input, flat-bezel design and Wi-Fi or 3G

* Specification and certifications are based on options and may vary.

Optional EOS Installation

WES 7
WE8S

Optional OS Installation

Windows® 7
Windows® 8/8.1

Overview

Fanless Touch Panel Computers

2

Heavy-duty Fanless Touch Panel Computers

Industrial Touch Panel Computers

Industrial Touch panel Monitors

Infotainment Touch Panel Computers

Healthcare & Medical Solutions

Open Frame Panel Computers

Accessories

