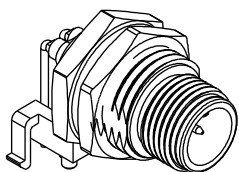
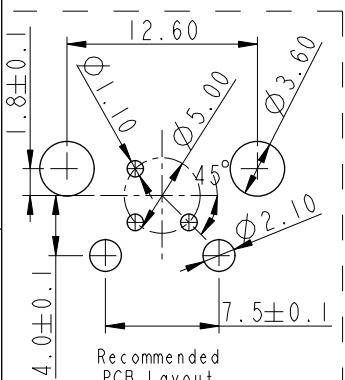
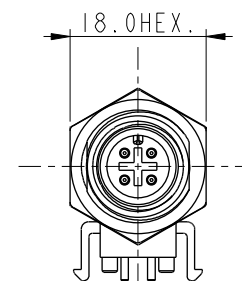
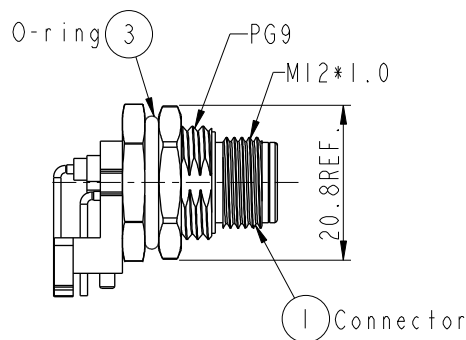
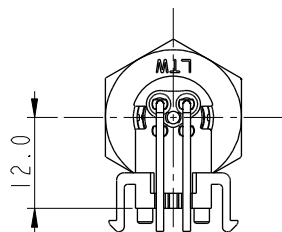


REV.	ECN NO.	DATE	SIGN	DESCRIPTION
A		2012/05/11	Tao-Cheng	Change Rev.03 To Rev.A

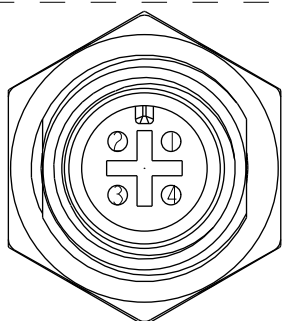


ALTW
 DCC. DEPT.
 CONFIDENTIAL
 2012-05-14
ISSUED

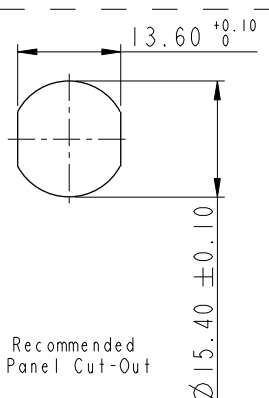


Recommended PCB Layout

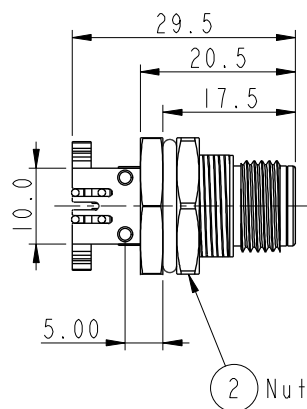
ALTW
 CONFIDENTIAL
 2012-05-11
 R&D DEPT.



Conn. Pin Assignments Front View



Recommended Panel Cut-Out



Note:

- * \varnothing Important Dimension To Check.
- * Waterproof Rate: IP68
 IP68: 1M Depth Of Water In 24hours
 (防水等級: IP68)
 (IP68: 1 米水深 24 小時)
- * Connector: Nylon+GF, Black
- * Male Pin: Copper Alloy, Gold Plated
- * Shell: Zinc Alloy, Nickel Plated.
- * Nut: Zinc Alloy, Nickel Plated.
- * O-ring: Silicon, Black
- * Boardlock: PBT+PC, Black
- * For Panel Thickness Max. 4.5mm
- * For PCB Thickness Max. 1.6mm

UNIT: mm TOLERANCE .X ±0.25 .XX ±0.1 .XXX ±0.05 ANGLES ±1°	TITLE SENSOR, M12, 90° PANEL 4PIN MCONN MPIN		Amphenol LTW 安費諾亮泰企業股份有限公司		ITEM NO	12-04PMMR-SF8001	DRAWN BY	Tao-cheng	DATE	2012-05-11
	SCALE	1:1			SIZE	A4	DWG NO	12-04PMMR-SF8001	CHECKED BY	Jimmy
	REV.	A	WC-REV.	A.3	CUSTOMER ALTW		APPROVED BY	Victor	DATE	2012-05-11

THIS DOCUMENT IS SUBJECT TO CHANGE WITHOUT NOTICE. IT IS CONFIDENTIAL AND A PROPERTY OF AMPHENOL LTW. DISCLOSURE TO THIRD PARTY HAS TO BE AUTHORIZED BY AMPHENOL LTW.