

**Product number CA10932\_FLARE-B**

Family	Flare	FWHM	10+108 degrees
Type	Assembly	Efficiency	93 %
LED	XB-D	cd/lm	1.520
Color	Clear	Gerber File	Available
Diameter	29 x 22.8 mm		
Height	12.84 mm		
Style	Rectang		
Optic Material	PMMA		
Holder Material	-		
Fastening	["screw", "tape"]		
Status	Production ready		

**Product number C10946\_FLARE-B**

Family	Flare	FWHM	10+108 degrees
Type	Lens	Efficiency	93 %
LED	XB-D	cd/lm	1.520
Color	Clear	Gerber File	Available
Diameter	29 x 23 mm		
Height	12.69 mm		
Style	Rectang		
Optic Material	PMMA		
Holder Material	-		
Fastening	["glue", "screw"]		
Status	Production ready		

**Product number C12763\_FLARE-MINI-A**

Family	Flare	FWHM	95+16 degrees
Type	Lens	Efficiency	95 %
LED	XB-D	cd/lm	1.300
Color	Clear	Gerber File	Available
Diameter	16 mm		
Height	8.6 mm		
Style	Round		
Optic Material	PMMA		
Holder Material	-		
Fastening	["glue"]		
Status	Production ready		

**Product number C12837\_FLARE-MINI-A-PIN**

Family	Flare	FWHM	95+16 degrees
Type	Lens	Efficiency	95 %
LED	XB-D	cd/lm	1.300
Color	Clear	Gerber File	Available
Diameter	16 mm		
Height	8.6 mm		
Style	Round		
Optic Material	PMMA		
Holder Material	-		
Fastening	["glue", "pin"]		
Status	Production ready		

**Product number C13015\_FLARE-MINI-AD**

Family	Flare	FWHM	100+16 degrees
Type	Lens	Efficiency	93 %
LED	XB-D	cd/lm	1.200
Color	Clear	Gerber File	Available
Diameter	16 mm		
Height	8.6 mm		
Style	Round		
Optic Material	PMMA		
Holder Material	-		
Fastening	["glue"]		
Status	Production ready		

**Product number C13016\_FLARE-MINI-AD-PIN**

Family	Flare	FWHM	100+16 degrees
Type	Lens	Efficiency	93 %
LED	XB-D	cd/lm	1.200
Color	Clear	Gerber File	Available
Diameter	16 mm		
Height	8.6 mm		
Style	Round		
Optic Material	PMMA		
Holder Material	-		
Fastening	["glue", "pin"]		
Status	Production ready		

**Product number CA13057\_FLARE-MINI-AD**

Family	Flare	FWHM	100+16 degrees
Type	Assembly	Efficiency	93 %
LED	XB-D	cd/lm	1.200
Color	Clear	Gerber File	Available
Diameter	16 mm		
Height	9.1 mm		
Style	Round		
Optic Material	PMMA		
Holder Material	-		
Fastening	["tape"]		
Status	Production ready		

**Product number CA13058\_FLARE-MINI-AD-PIN**

Family	Flare	FWHM	100+16 degrees
Type	Assembly	Efficiency	93 %
LED	XB-D	cd/lm	1.200
Color	Black	Gerber File	Available
Diameter	16 mm		
Height	9.1 mm		
Style	Round		
Optic Material	PMMA		
Holder Material	-		
Fastening	["pin", "tape"]		
Status	Production ready		


**Product number CA12764\_FLARE-MINI-A**

Family	Flare	FWHM	130+21 degrees
Type	Assembly	Efficiency	94 %
LED	XB-D	cd/lm	0.800
Color	Clear	Gerber File	Available
Diameter	16 mm		
Height	9.1 mm		
Style	Round		
Optic Material	PMMA		
Holder Material	-		
Fastening	["tape"]		
Status	Production ready		

**Product number CA12838\_FLARE-MINI-A-PIN**

Family	Flare	FWHM	130+21 degrees
Type	Assembly	Efficiency	94 %
LED	XB-D	cd/lm	0.800
Color	Clear	Gerber File	Available
Diameter	16 mm		
Height	9.1 mm		
Style	Round		
Optic Material	PMMA		
Holder Material	-		
Fastening	["tape", "pin"]		
Status	Production ready		

**NOTE: The typical divergence will be changed by different color, chip size and chip position tolerance. The typical total divergence is the full angle measured where the luminous intensity is half of the peak value.**



## PRODUCT DATASHEET

### Flare series

last update 2/12/2016

#### GENERAL INFORMATION

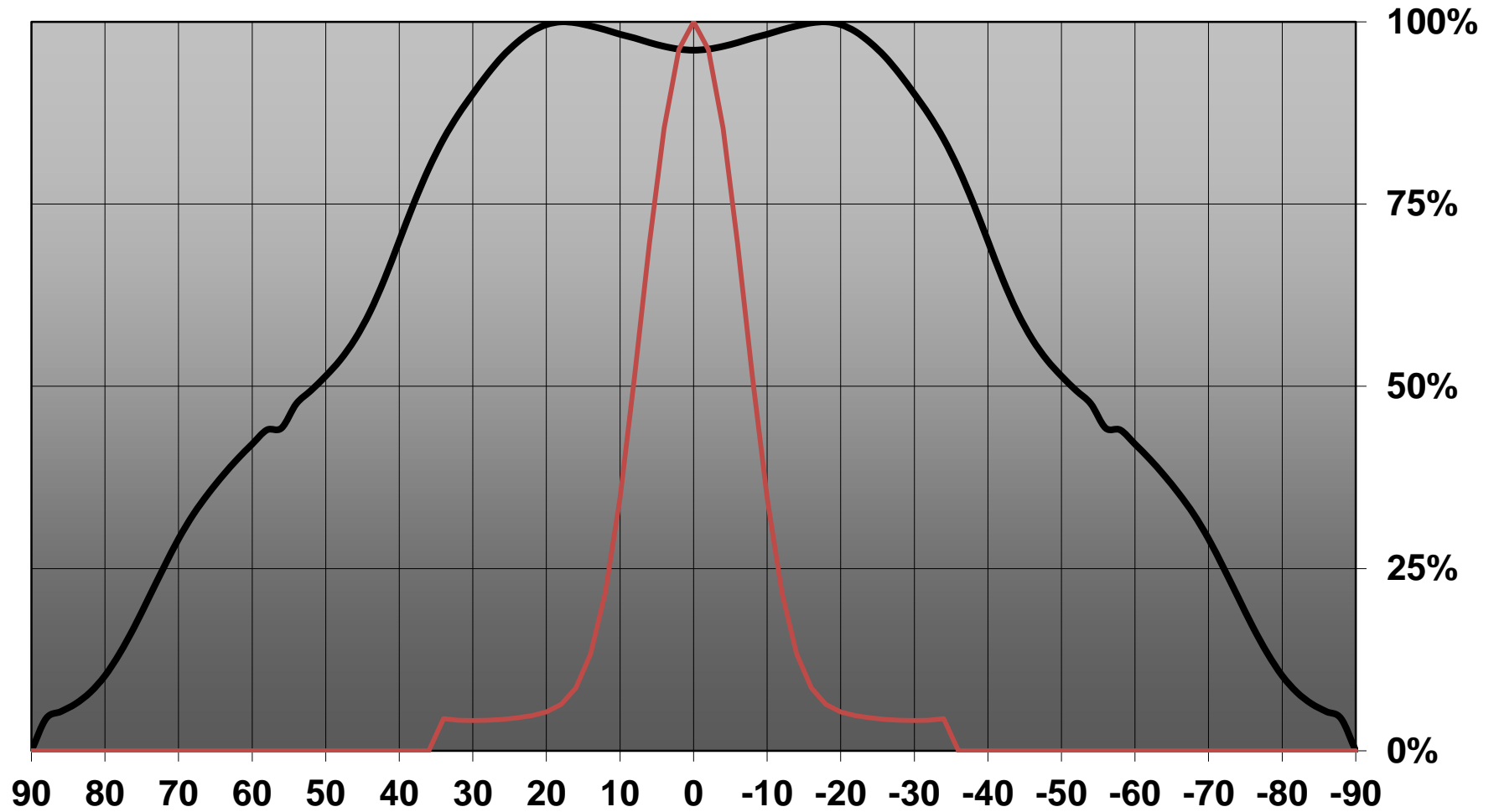
- Product series especially designed & optimized for XB-D series of LEDs.
- Special care taken to make light distribution as uniform as possible.
- Lens material optical grade PMMA with high UV and temperature resistance. Allows use of high current and temperature conditions.

Please find more information about used material from below:

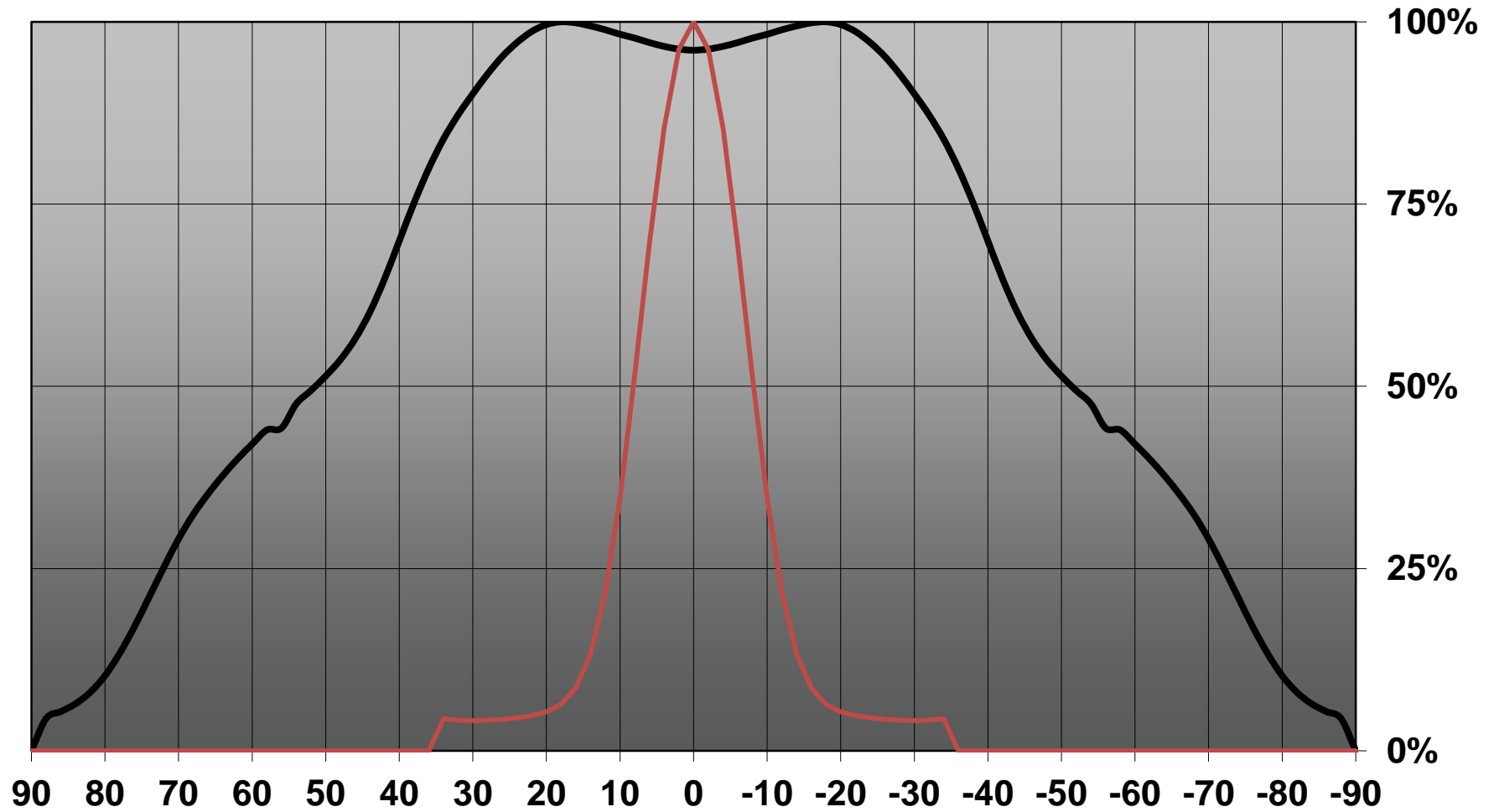
[http://ledil.fi/sites/default/files/Documents/Technical/Material/PMMA%20N%20UL94\\_Yellow%20Card.pdf](http://ledil.fi/sites/default/files/Documents/Technical/Material/PMMA%20N%20UL94_Yellow%20Card.pdf)

<http://ledil.fi/sites/default/files/Documents/Technical/Material/PMMA%20N%20PLEXIGLAS-Datasheet.pdf>

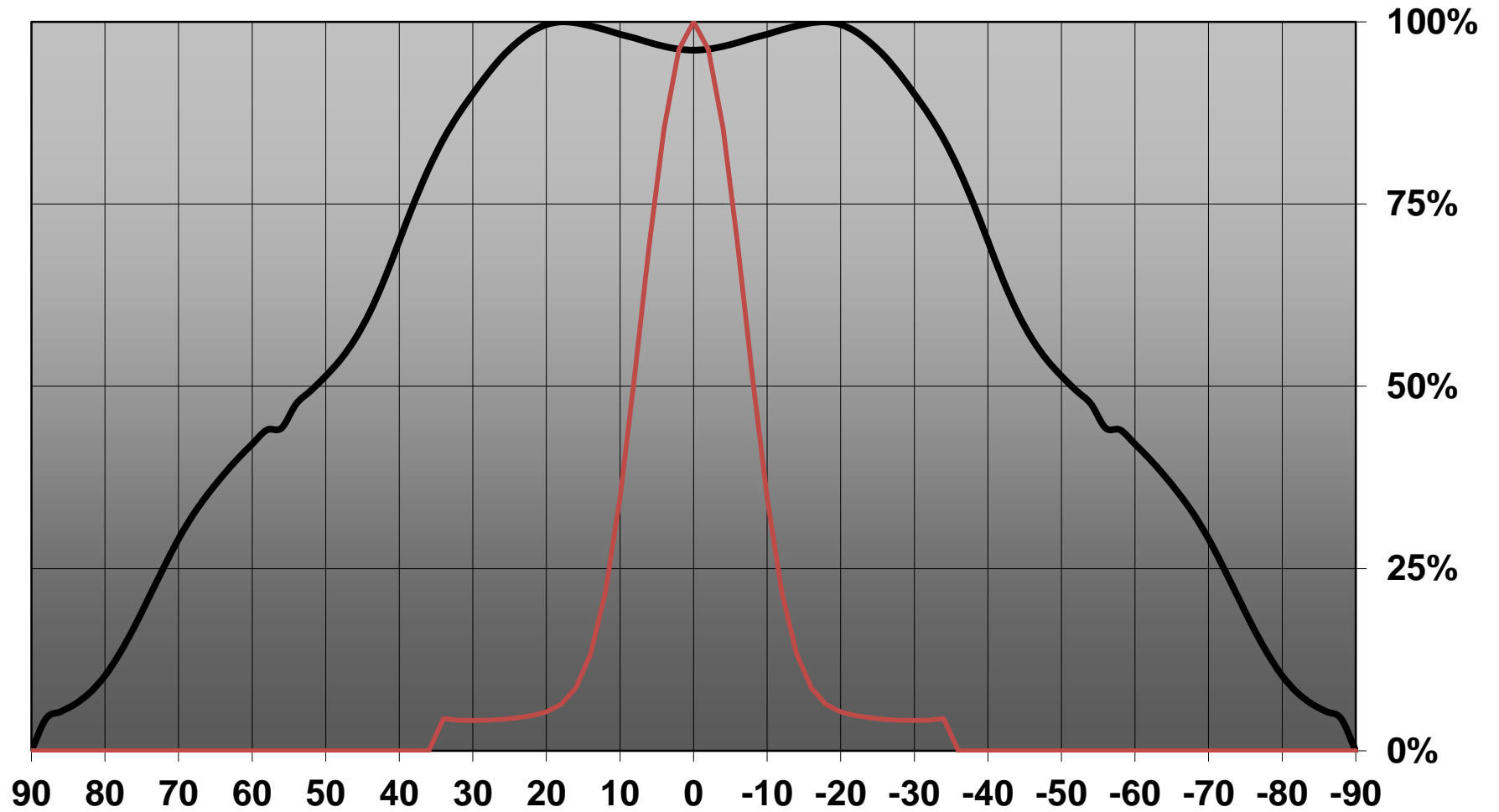
Relative intensity of CA13057&CA13058\_FLARE-MINI-AD-XBD



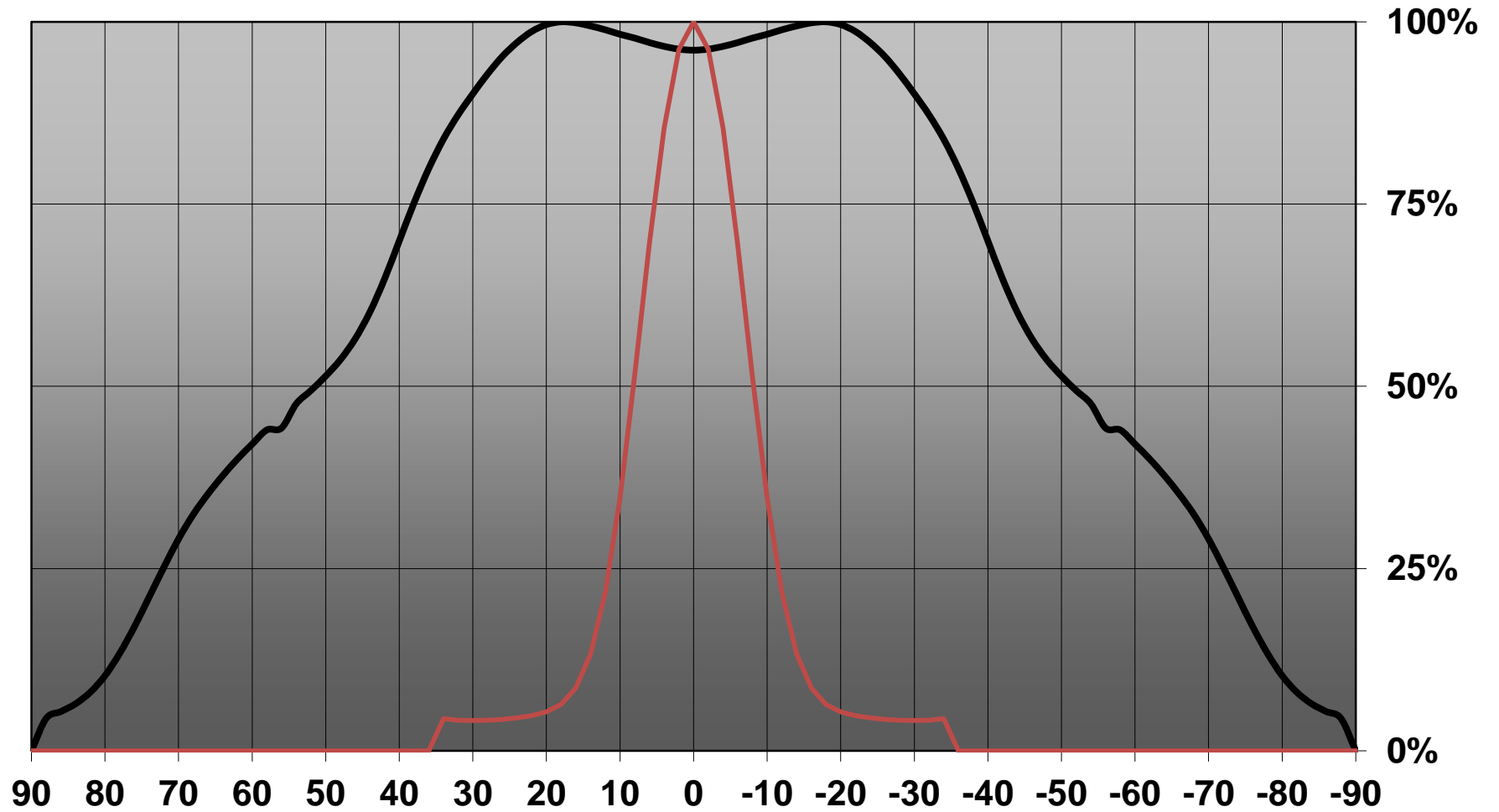
Relative intensity of CA13057&CA13058\_FLARE-MINI-AD-XBD



Relative intensity of CA13057&CA13058\_FLARE-MINI-AD-XBD



Relative intensity of CA13057&CA13058\_FLARE-MINI-AD-XBD





D

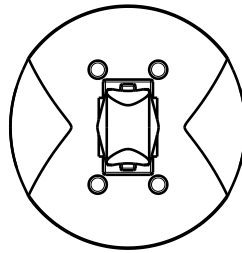
C

B

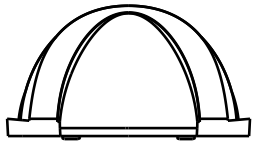
A

4

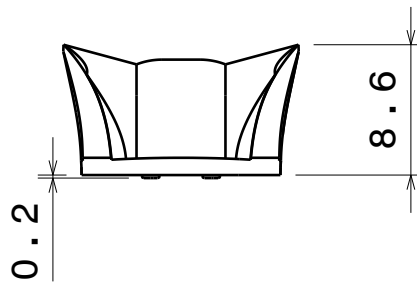
4



Bottom view



Right view



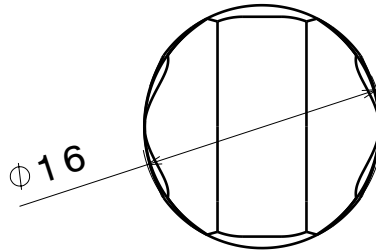
Front view

3

3

2

2



Top view

This drawing is our property.  
It can't be reproduced  
or communicated without  
our written agreement.



Ledil Oy  
Salorankatu 10  
FIN 24240 SALO  
Finland

DRAWING TITLE

Datasheet FLARE-MINI

DRAWN BY

as

DATE

1.8.2012

CHECKED BY

sn

DATE

1.8.2012

DESIGNED BY

pl

DATE

27.2.2012

SIZE

A4

PART NUMBER

SCALE

2:1

WEIGHT

REV

001

SHEET

1/1

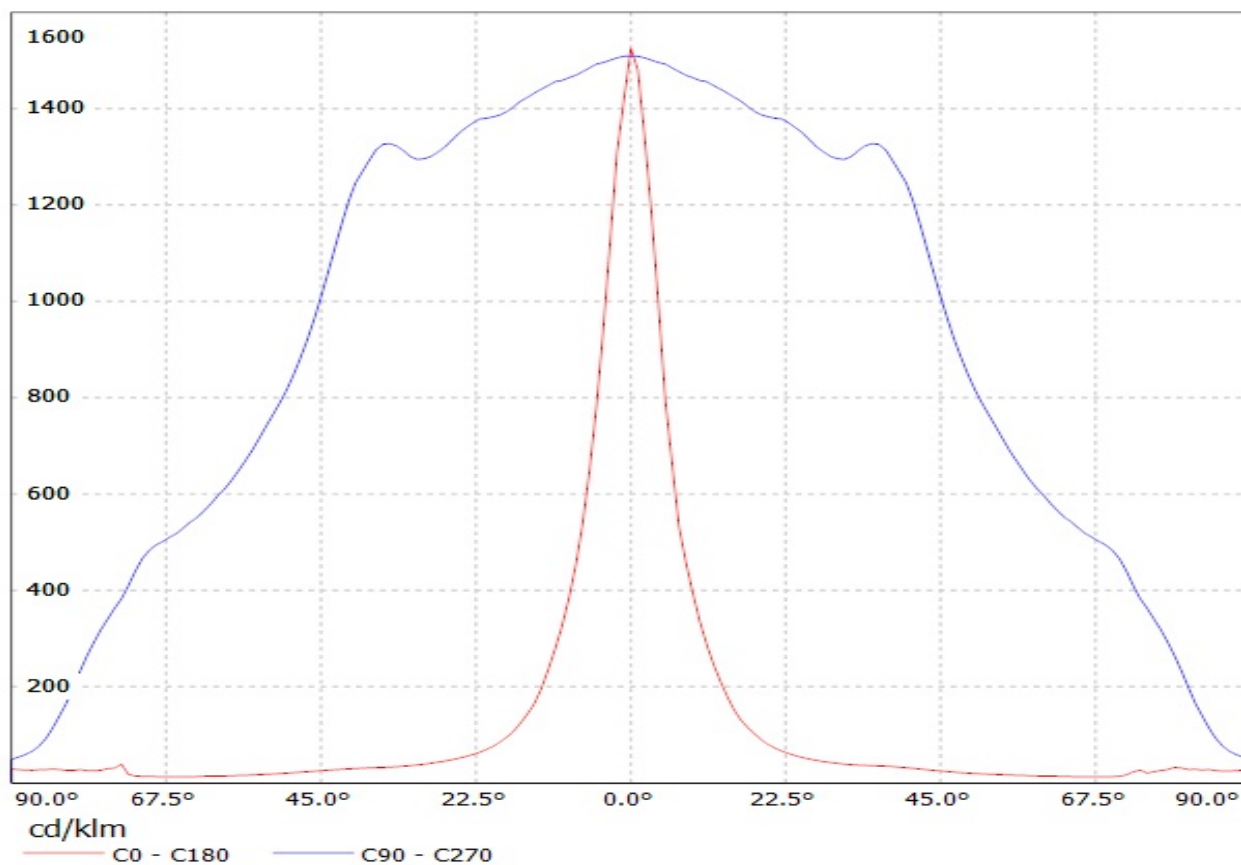
1

1

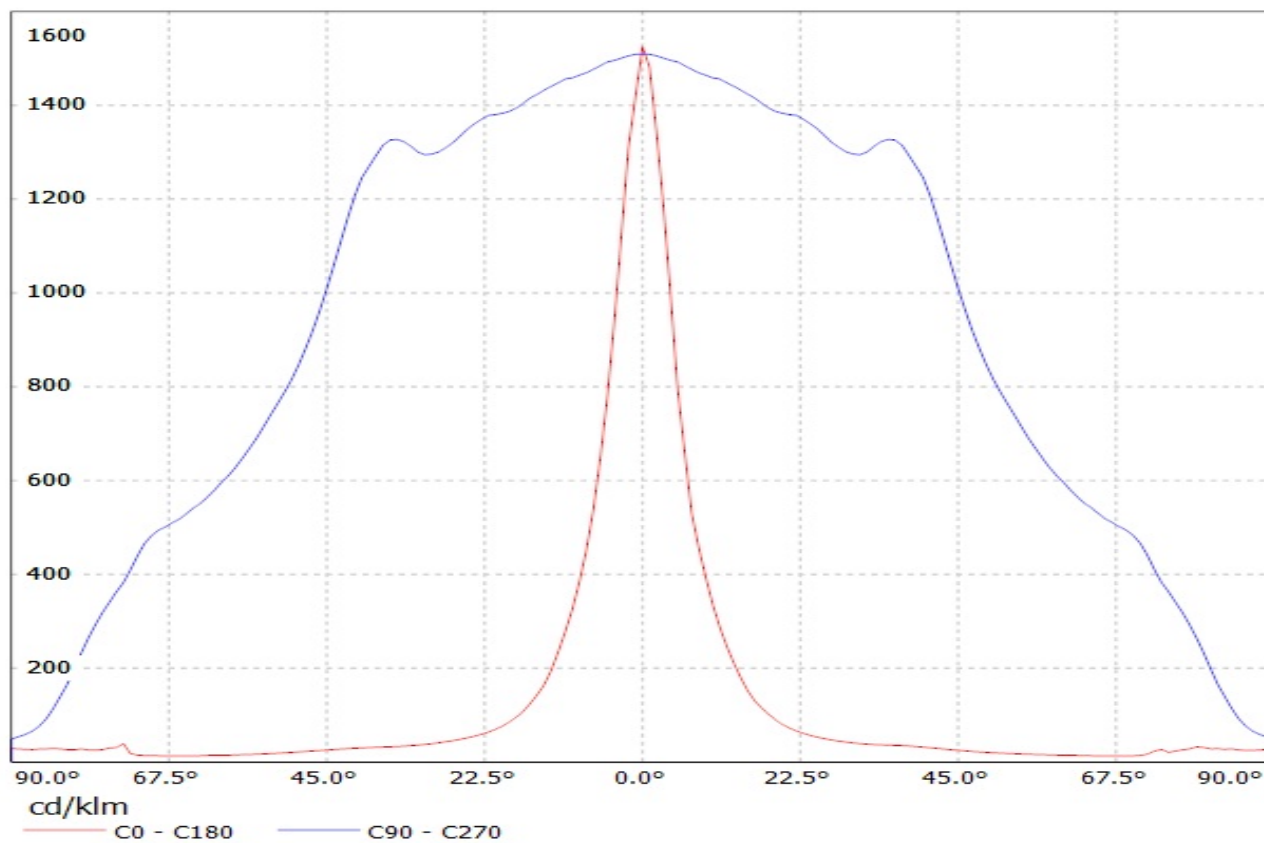
D

A

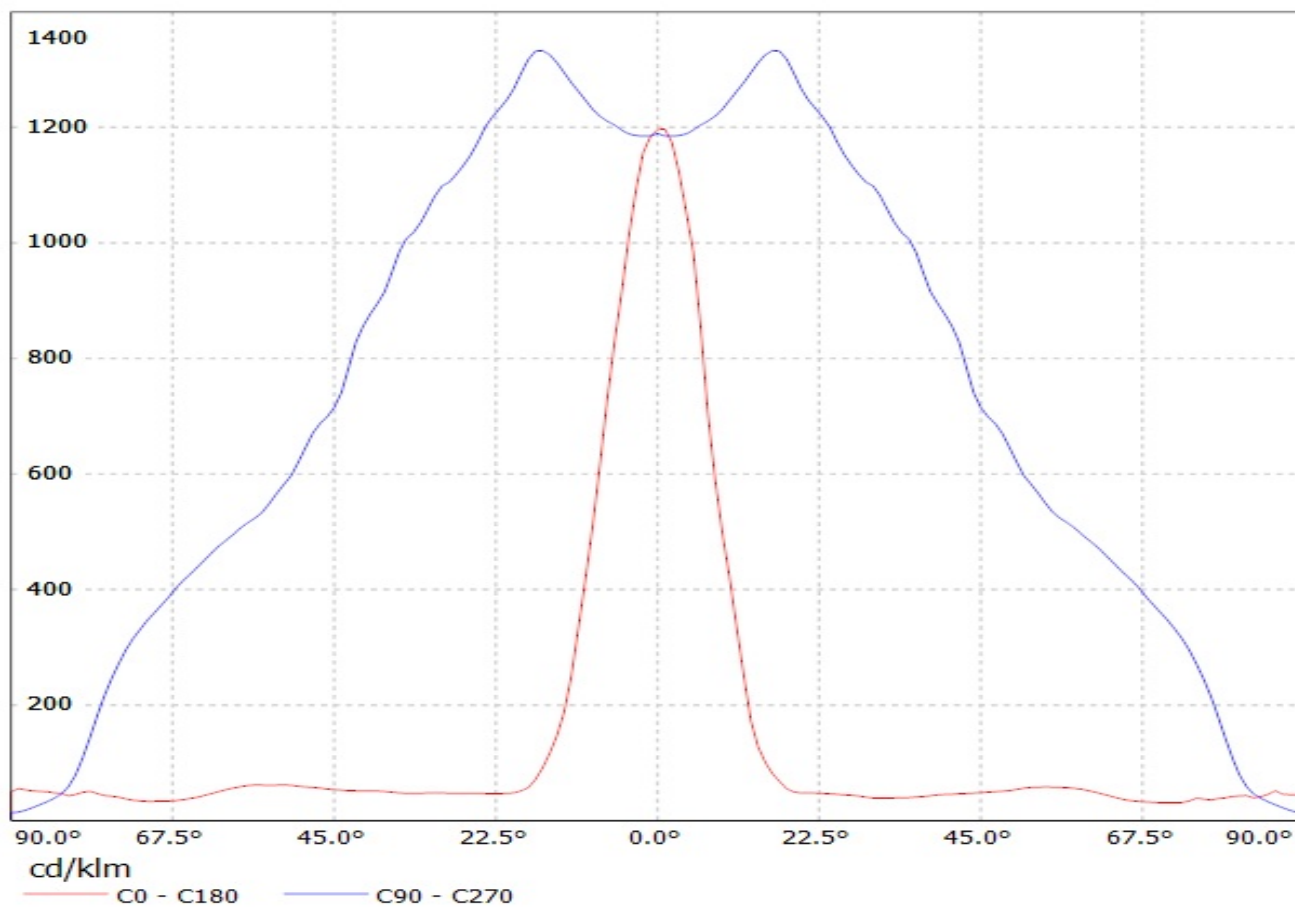
Luminaire: LEDIL OY CA10932\_FLARE-B (XB-D) Efficiency=93%  
Lamps: 1 x Cree XB-D white (97lm @ 250mA)



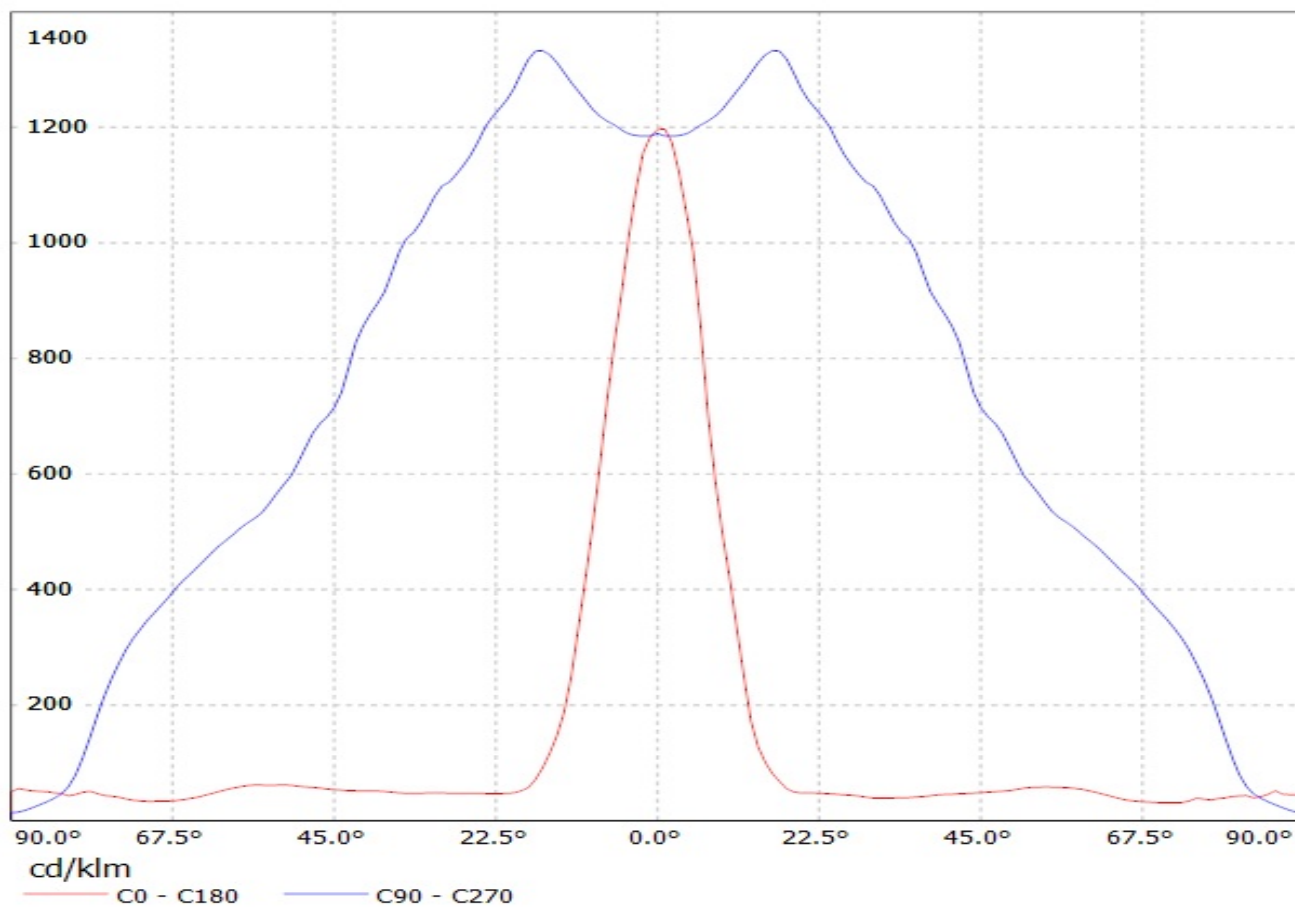
Luminaire: LEDIL OY C10946\_FLARE-B / CA10932\_FLARE-B (XB-D) Efficiency=93%  
Lamps: 1 x Cree XB-D white (97lm @ 250mA)



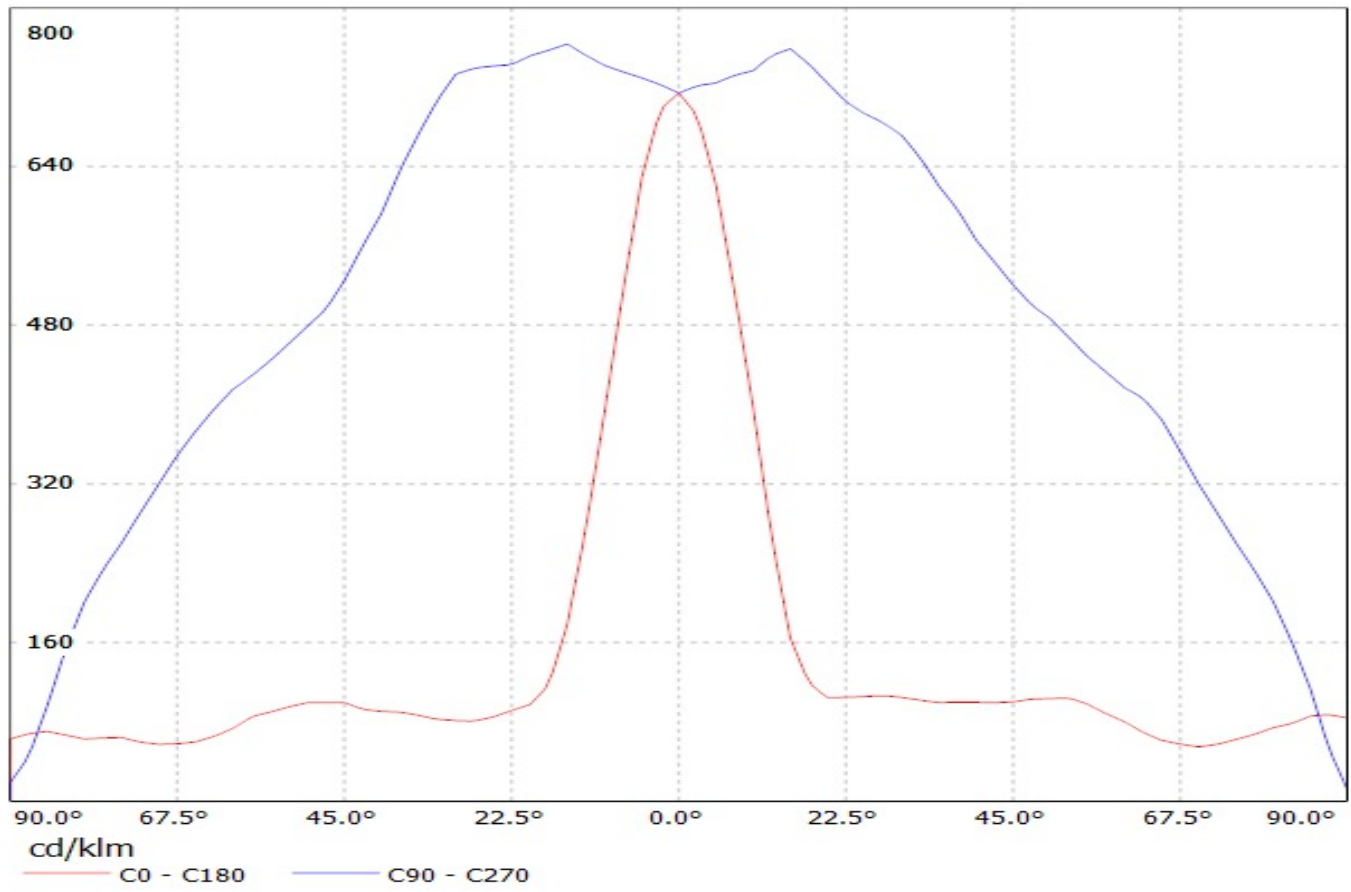
Luminaire: LEDIL OY C12763 & C12837\_FLARE-MINI-A (XB-D) Efficiency=95%  
Lamps: 1 x Cree XB-D white (97lm @ 250mA)



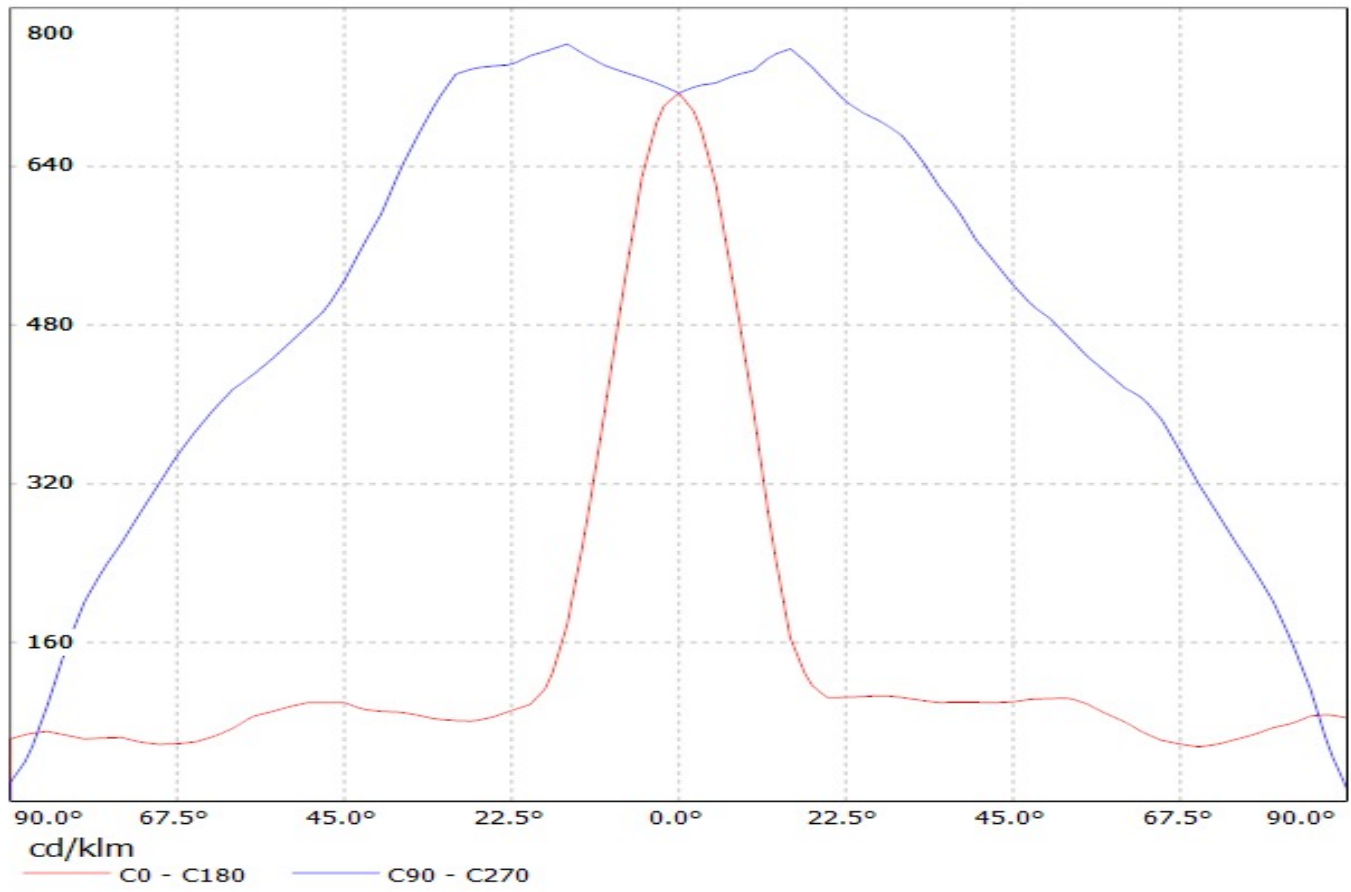
Luminaire: LEDIL OY C12763 & C12837\_FLARE-MINI-A (XB-D) Efficiency=95%  
Lamps: 1 x Cree XB-D white (97lm @ 250mA)



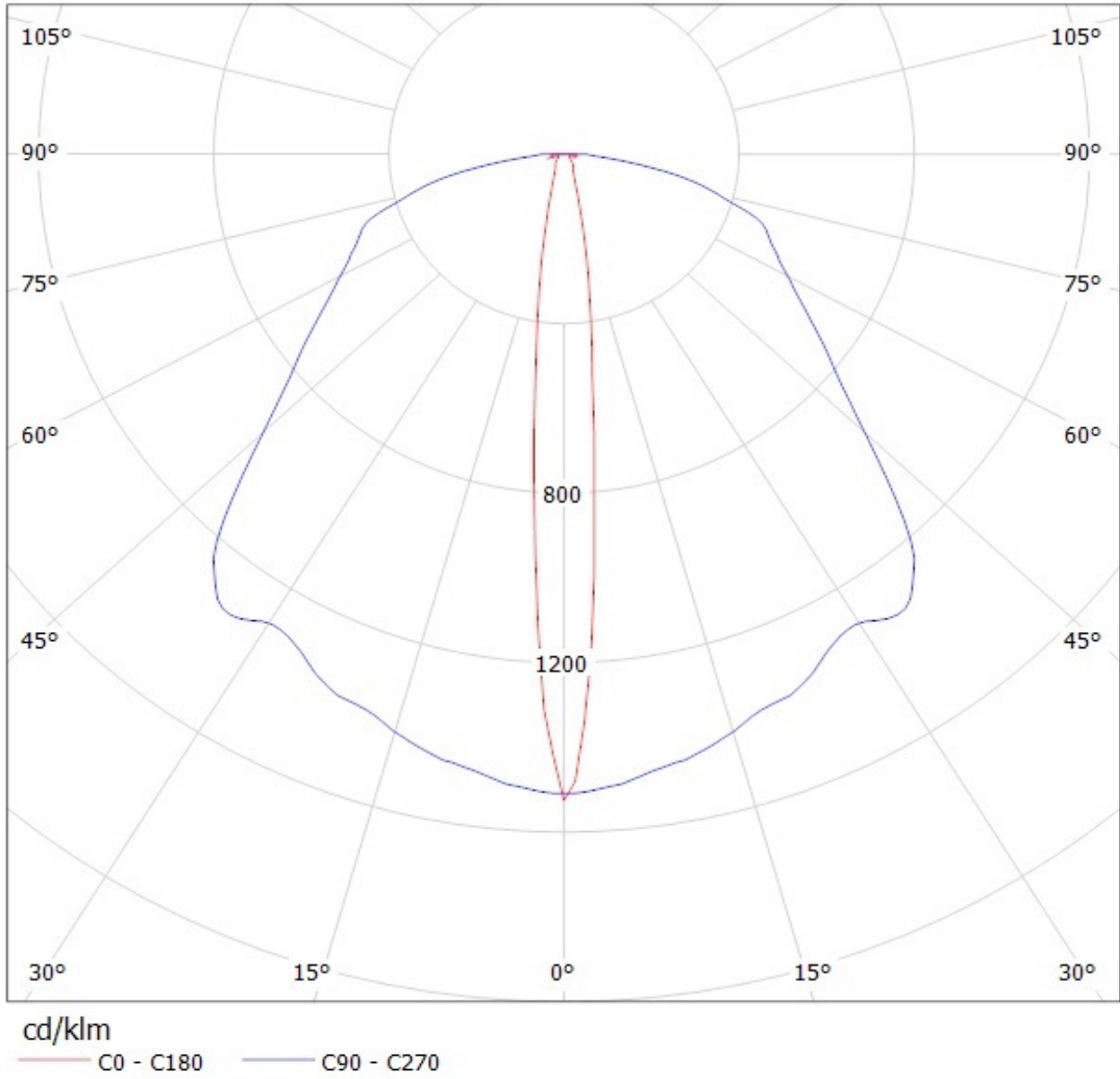
Luminaire: Ledil Oy CA12764&CA12838\_FLARE-MINI-A (Cree XB-D 94lm @ 250mA) Efficiency=94%  
Lamps: 1 x Cree XB-D 94lm @ 250mA



Luminaire: Ledil Oy CA12764&CA12838\_FLARE-MINI-A (Cree XB-D 94lm @ 250mA) Efficiency=94%  
Lamps: 1 x Cree XB-D 94lm @ 250mA

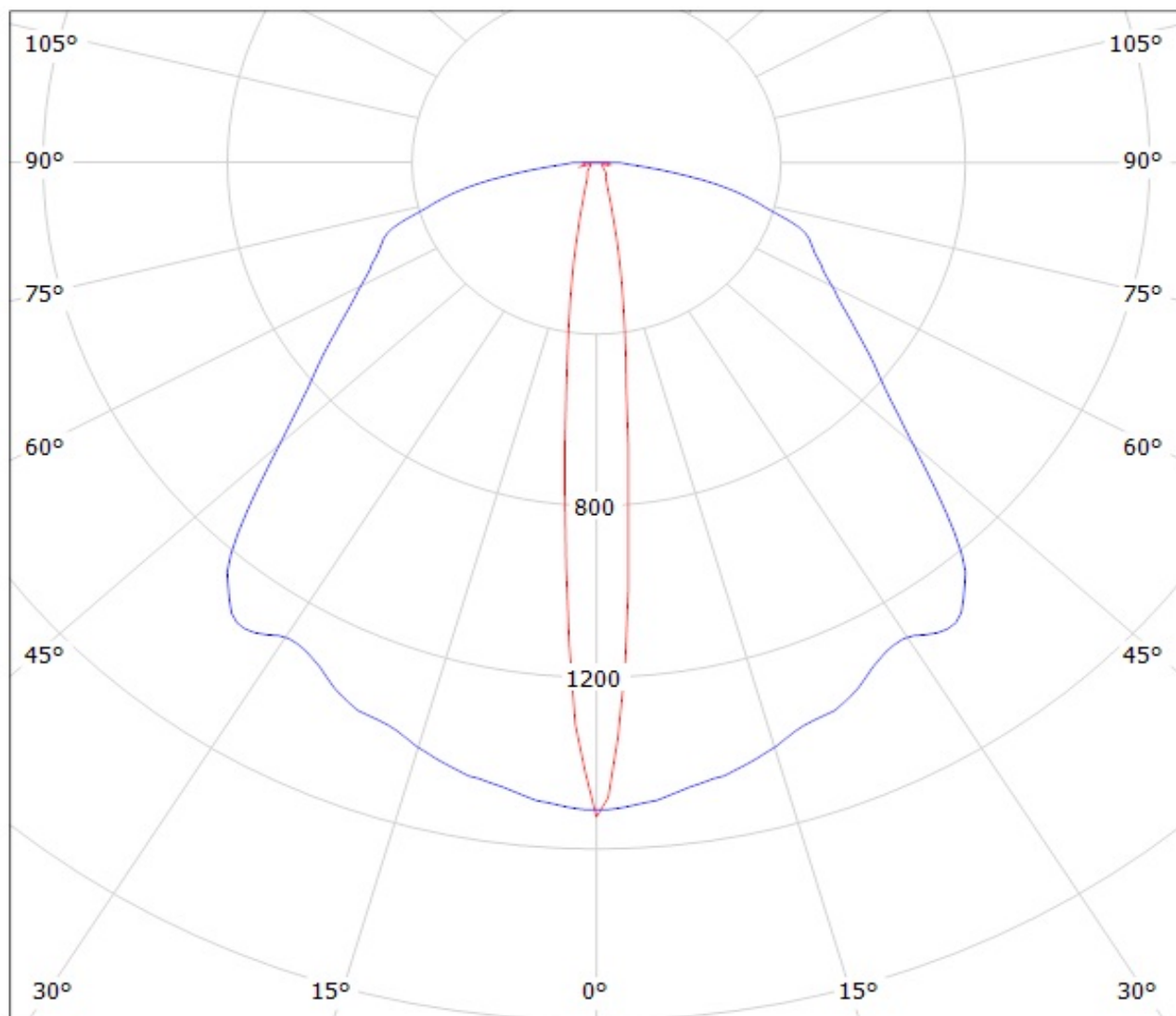


Luminaire: LEDIL OY CA10932\_FLARE-B (XB-D) Efficiency=93%  
Lamps: 1 x Cree XB-D white (97lm @ 250mA)





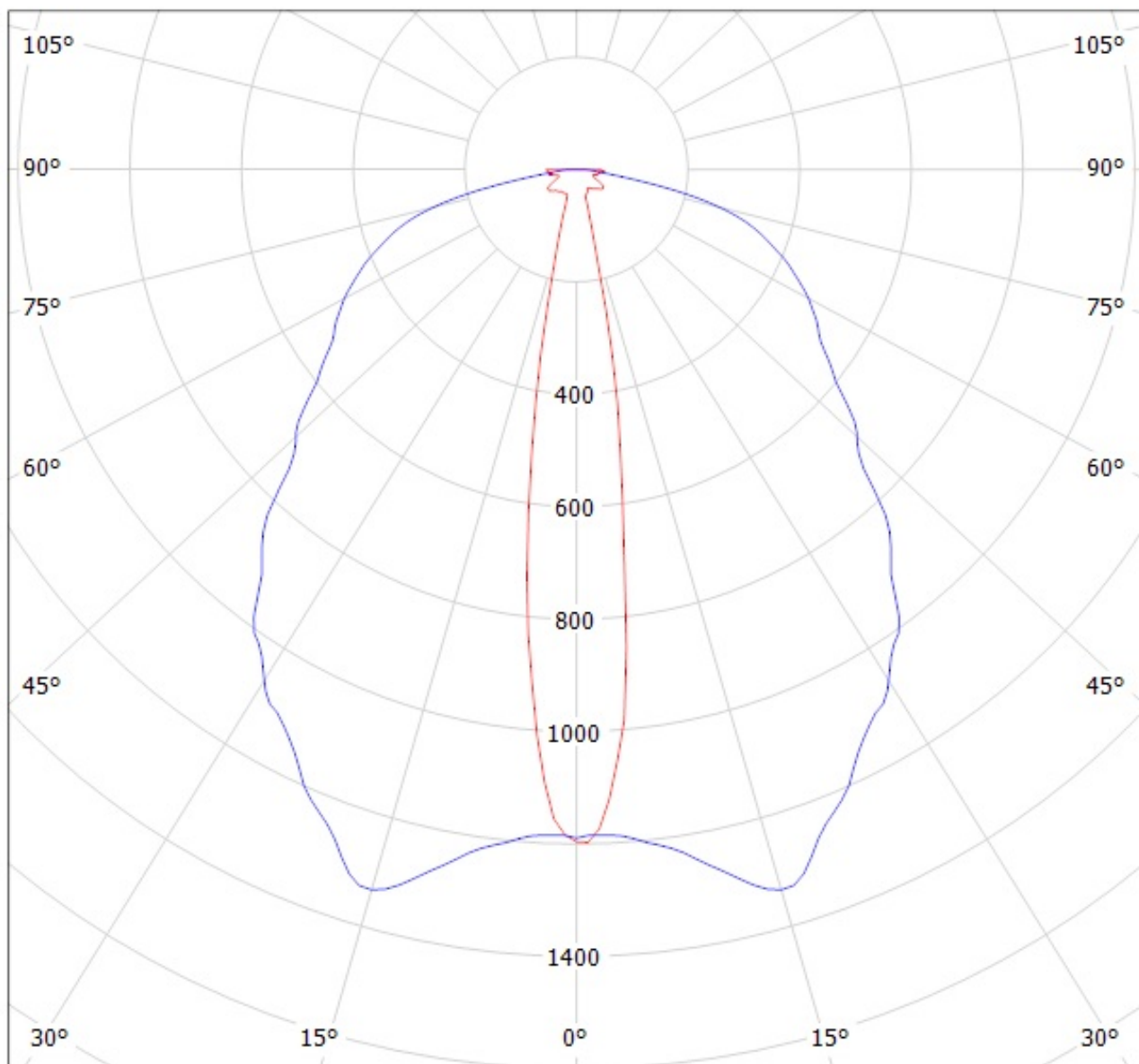
Luminaire: LEDIL OY C10946\_FLARE-B / CA10932\_FLARE-B (XB-D) Efficiency=93%  
Lamps: 1 x Cree XB-D white (97lm @ 250mA)



cd/klm

— C0 - C180    — C90 - C270

Luminaire: LEDIL OY C12763 & C12837\_FLARE-MINI-A (XB-D) Efficiency=95%  
Lamps: 1 x Cree XB-D white (97lm @ 250mA)

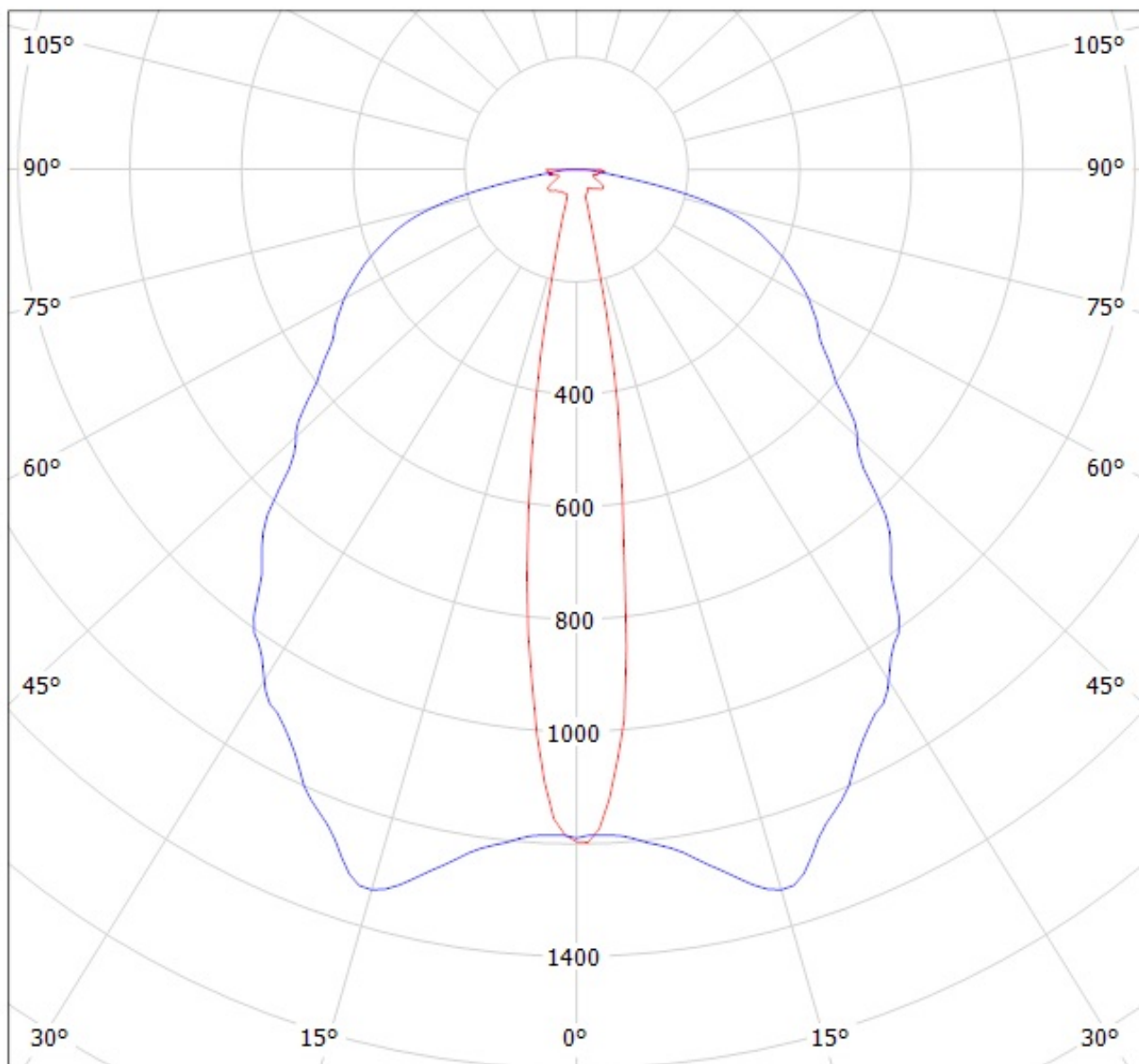


cd/klm

— C0 - C180

— C90 - C270

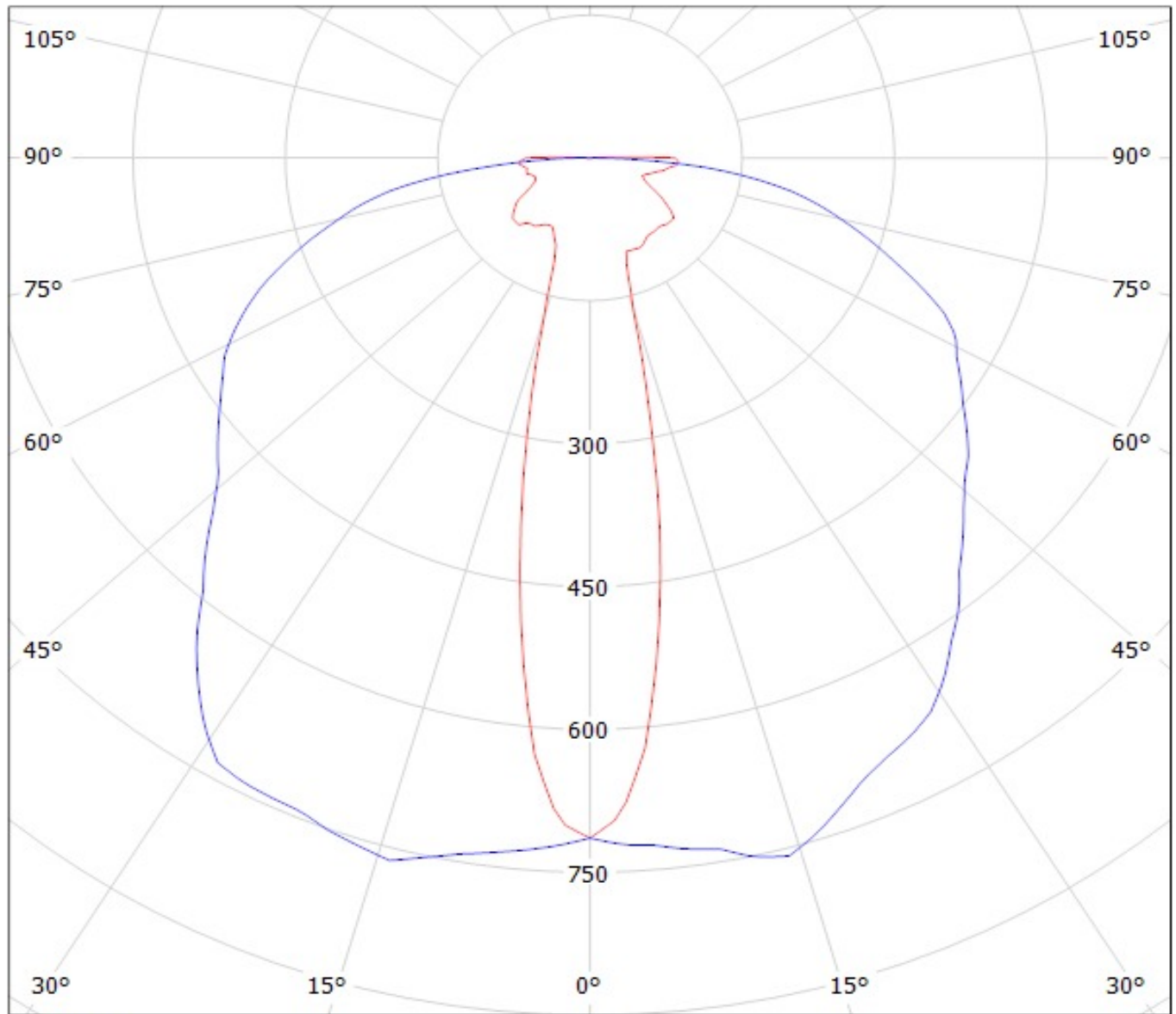
Luminaire: LEDIL OY C12763 & C12837\_FLARE-MINI-A (XB-D) Efficiency=95%  
Lamps: 1 x Cree XB-D white (97lm @ 250mA)



cd/klm

— C0 - C180    — C90 - C270

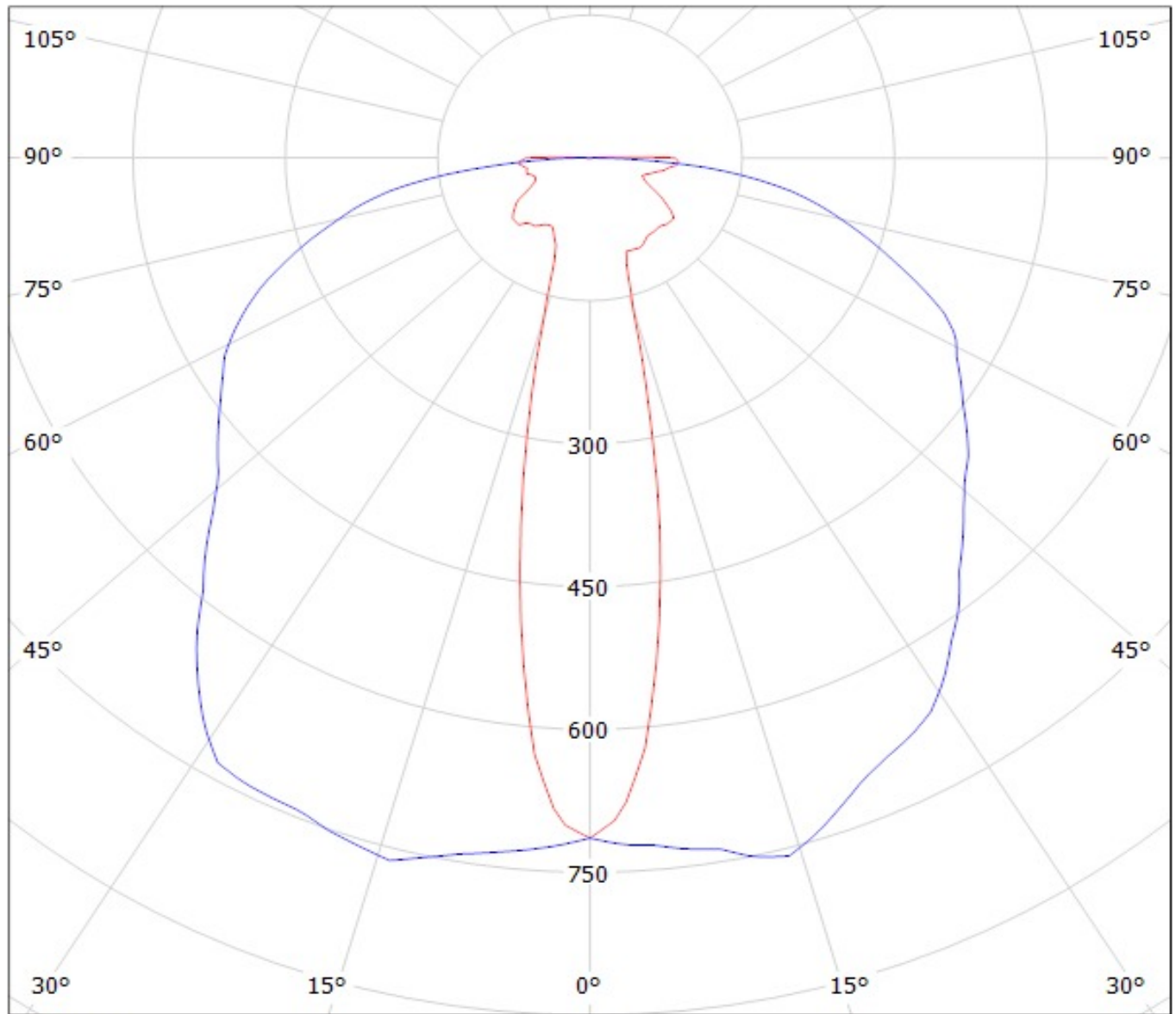
Luminaire: Ledil Oy CA12764&CA12838\_FLARE-MINI-A (Cree XB-D 94lm @ 250mA) Efficiency=94%  
Lamps: 1 x Cree XB-D 94lm @ 250mA



cd/klm

— C0 - C180    — C90 - C270

Luminaire: Ledil Oy CA12764&CA12838\_FLARE-MINI-A (Cree XB-D 94lm @ 250mA) Efficiency=94%  
Lamps: 1 x Cree XB-D 94lm @ 250mA



cd/klm

— C0 - C180 — C90 - C270