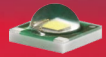


Data Sheet

LL03LU-DOxxL06



Xlamp XP-E



■ Features & Typical Applications

- High efficiency
- Available in 3 beam Patterns
- Optimized for uniform effects
- Lens without Housing
- Spot Lighting
- Architectural Lighting

■ Table of Contents

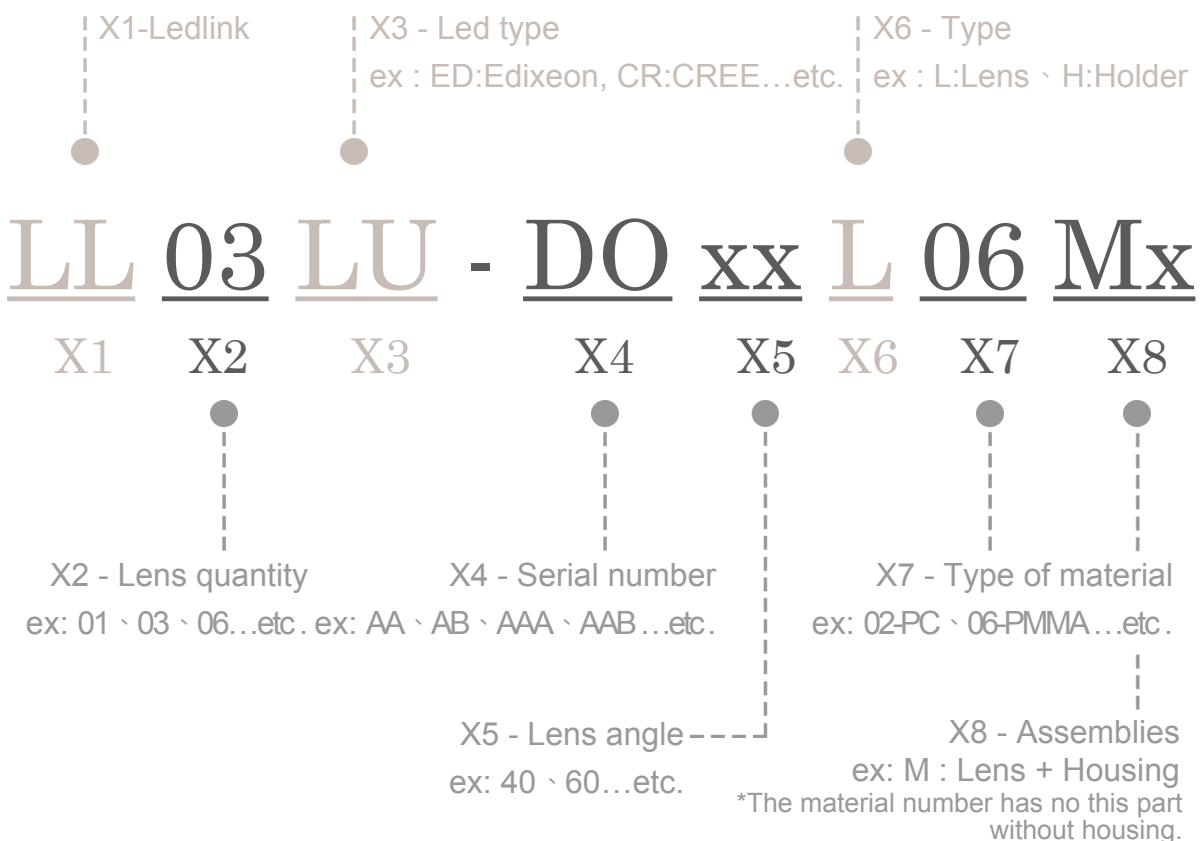
General Information & Product Nomenclature.....	P.2
Optical Specifications	P.3
Mechanical Specifications	P.4
Package Specifications	P.5

LL03LU-DOxxL06

General Information

- Lens Material Optical Grade PMMA
- Operating Temperature range -40°C~+70°C(upper limit +80°C)
- Storage Temperature range -40°C~+70°C(upper limit +80°C)
 - * Average transmittance in visible spectrum 400nm~700nm>90%
- Usage and Maintenance:
 1. If necessary, clean lenses with mild soap, water and soft cloth.
 2. Never use any commercial cleaning solvents on lenses, like alcohol.
 3. Please handle or install lenses with wearing gloves, skin oils may damage lens or its optical characteristic.

Product Nomenclature



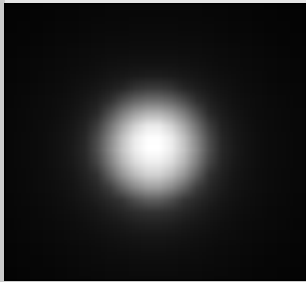
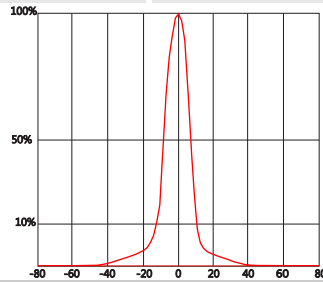
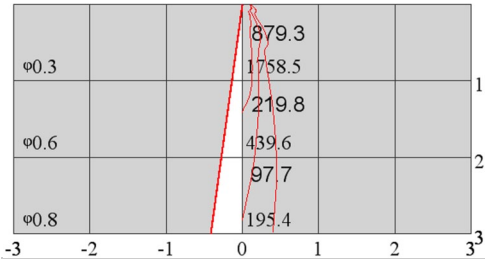

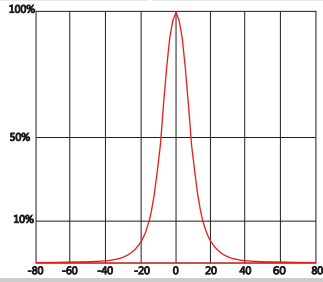
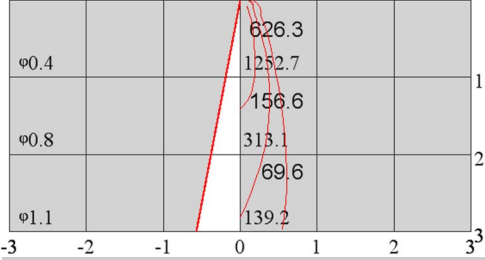
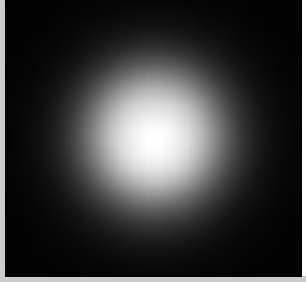
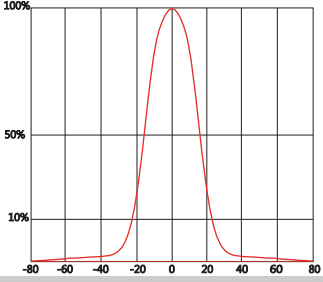
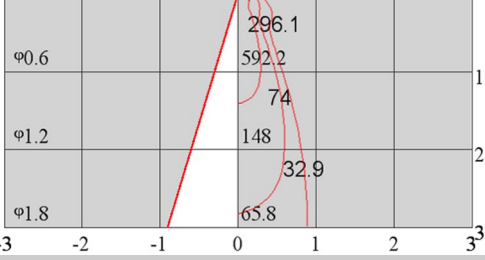
LL03LU-DOxxL06

Optical Specifications



Xlamp XP-E

Note: (1) All the results of analysis are based on 0 degrees of elevation.
 (2) Tolerance: $\pm 10\%$.
 (3) Led Luminous Flux(lm): 100($\pm 5\%$).

Part Number	FWHM	Field Angle*	cd / lm	IES File
LL03LU-DO15L06	18°	32°	5.9	Download
				
Beam Pattern	Light Distribution Curve	Illuminance Distribution		
Part Number	FWHM	Field Angle*	cd / lm	IES File
LL03LU-DO25L06	20°	42°	4.2	Download
				
Beam Pattern	Light Distribution Curve	Illuminance Distribution		
Part Number	FWHM	Field Angle*	cd / lm	IES File
LL03LU-DO40L06	36°	57°	2.0	Download
				
Beam Pattern	Light Distribution Curve	Illuminance Distribution		

*The Field Angle is the angle between the two directions opposed to each other over the beam axis for which the luminous intensity is 10% that of the maximum luminous intensity.
 *This testing result is obtained through testing the popular rank LED samples which provided by the original manufacturer. Hence, the testing results would be varied as the users choose same LED model but different rank.

LL03LU-DOxxL06

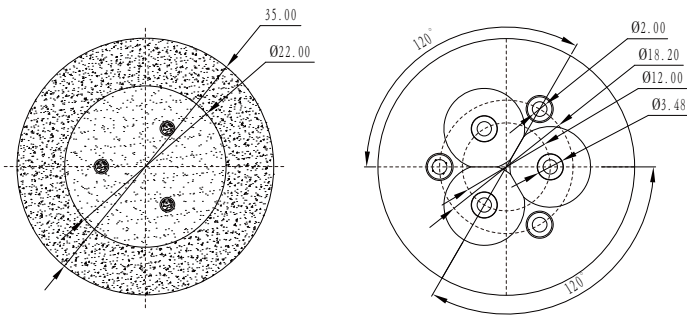
Mechanical Specification

1. Fixing method

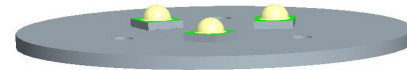
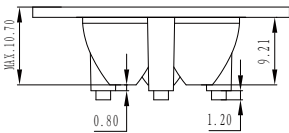
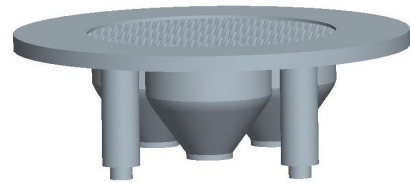
- Glue
 Screw
 Tape
 Fixing-ring
 Frame

Note: (1) All dimensions are in mm.
 (2) All measurements are ± 0.15 mm unless otherwise indicated.

2. Lens dimensions

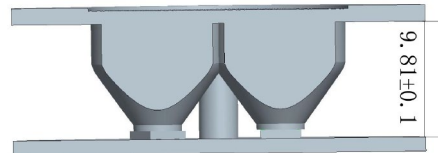


3. Lens + Leds + MCPCB assembly instruction



4. Lens assembly dimensions

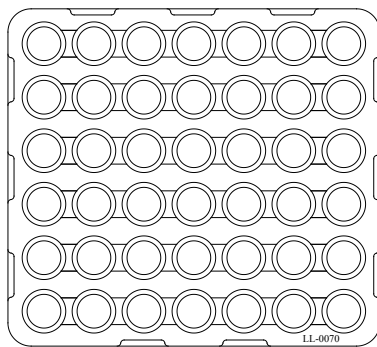
5. View assembly lens with MCPCB:



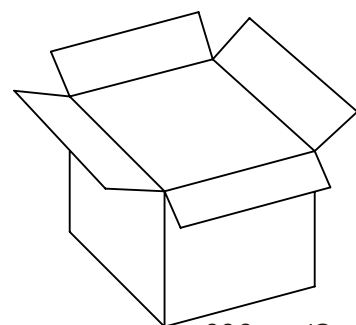
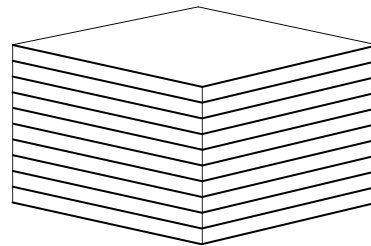
LL03LU-DOxxL06

Package Specifications

Item	Quantity	Total	Size(L*W*H)	G.W
Inner box		42 pcs	32*29*2.0 cm	3.6g
Outer box	336 pcs/Outer box	336 pcs	35*31*21 cm	
Outer box				



42 pcs/Inner box



336 pcs/Outer box



Note: