

**Product number FA10887\_TINA-RS**

Family	Tina	FWHM	10 degrees
Type	Assembly	Efficiency	93 %
LED	XP-E	cd/lm	18.300
Color	White	Gerber File	Available
Diameter	16.1 mm		
Height	9.7 mm		
Style	Round		
Optic Material	PMMA		
Holder Material	PC		
Fastening	Tape		
Status	On production		

**Product number FA10644\_TINA-D**

Family	Tina	FWHM	14 degrees
Type	Assembly	Efficiency	93 %
LED	XP-E	cd/lm	9.580
Color	White	Gerber File	Available
Diameter	16.1 mm		
Height	9.7 mm		
Style	Round		
Optic Material	PMMA		
Holder Material	PC		
Fastening	Tape		
Status	On production		

**Product number FA10645\_TINA-M**

Family	Tina	FWHM	30 degrees
Type	Assembly	Efficiency	91 %
LED	XP-E	cd/lm	2.440
Color	White	Gerber File	Available
Diameter	16.1 mm		
Height	9.7 mm		
Style	Round		
Optic Material	PMMA		
Holder Material	PC		
Fastening	Tape		
Status	On production		

**Product number FA11200\_TINA-O**

Family	Tina	FWHM	33+15 degrees
Type	Assembly	Efficiency	93 %
LED	XP-E	cd/lm	3.750
Color	White	Gerber File	Available
Diameter	16.1 mm		
Height	9.7 mm		
Style	Round		
Optic Material	PMMA		
Holder Material	PC		
Fastening	Tape		
Status	On production		

**PRODUCT DATASHEET**  
**Tina series**

last update 13/11/2012

**Product number** FA11019\_TINA-WW

Family	Tina	FWHM	58 degrees
Type	Assembly	Efficiency	93 %
LED	XP-E	cd/lm	0.800
Color	White	Gerber File	Available
Diameter	16.1 mm		
Height	9.7 mm		
Style	Round		
Optic Material	PMMA		
Holder Material	PC		
Fastening	Tape		
Status	On production		

**NOTE: The typical divergence will be changed by different color, chip size and chip position tolerance. The typical total divergence is the full angle measured where the luminous intensity is half of the peak value.**

**GENERAL INFORMATION**

- Product series especially designed & optimized for XP-E series of LEDs.
- Special care taken to make light distribution as uniform as possible.
- Lens material optical grade PMMA with high UV and temperature resistance. Allows use of high current and temperature conditions.

Please find more information about used material from below:

[http://ledil.fi/sites/default/files/Documents/Technical/Material/PMMA%20N%20UL94\\_Yellow%20Card.pdf](http://ledil.fi/sites/default/files/Documents/Technical/Material/PMMA%20N%20UL94_Yellow%20Card.pdf)

<http://ledil.fi/sites/default/files/Documents/Technical/Material/PMMA%20N%20PLEXIGLAS-Datasheet.pdf>

- Optic holder molded by high quality PC material (120 degrees of Celcius / 248 degrees of Fahrenheit).

- Fastening to heat sink with a PU foam adhesive tape of automotive grade. Please find fastening details by clicking link: [http://www.ledil.com/datasheets/DataSheet\\_TAPE.pdf](http://www.ledil.com/datasheets/DataSheet_TAPE.pdf)

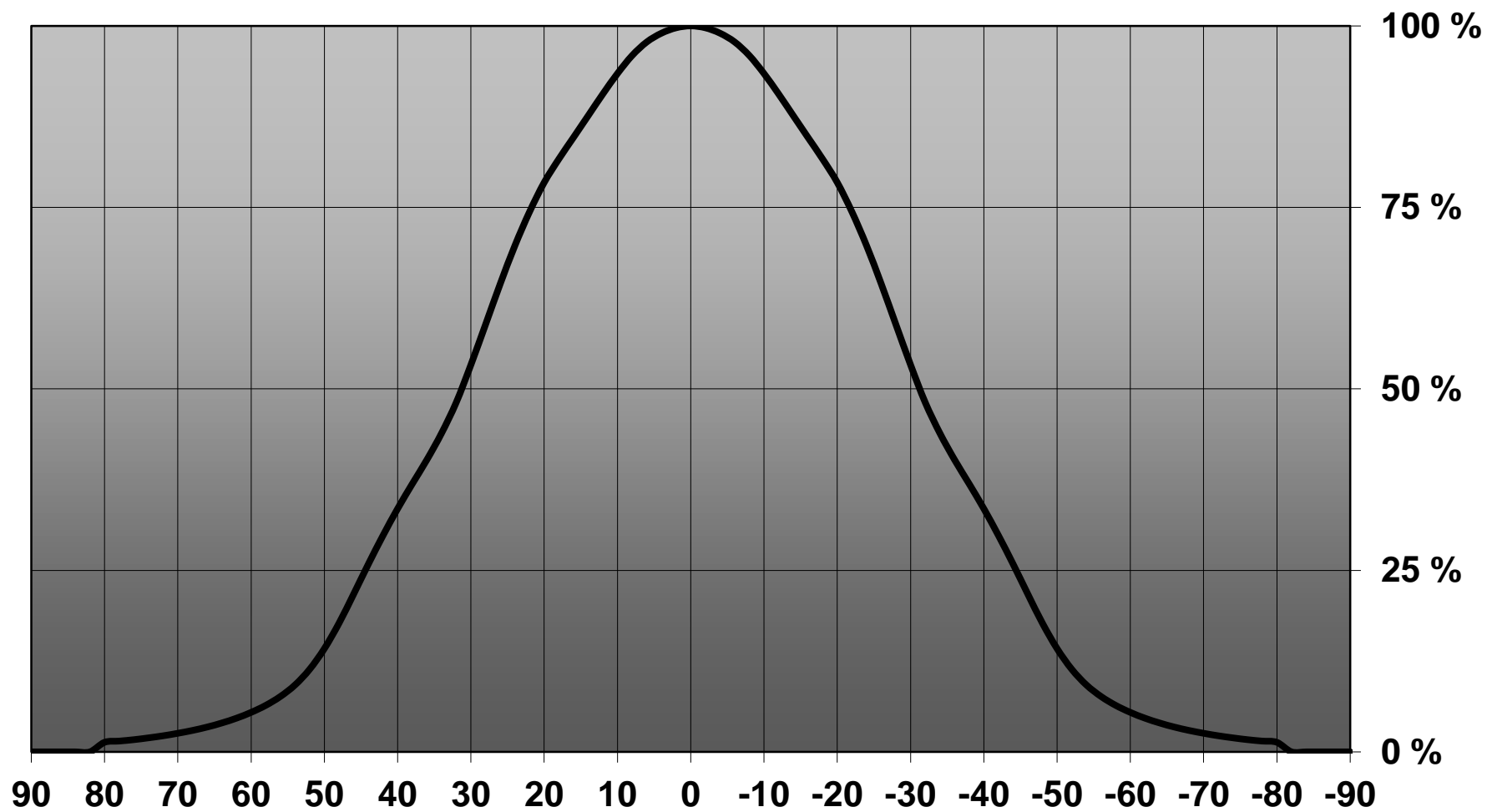
**NOTE 1: We advise customer to ensure the suitability and sufficiency of the bond in the end product. For example, mechanical stress, vibration and holes on the surface of the circuit board weaken the strength of the tape.**

**NOTE 2: Assembly to the surface must be made straight, so the tape bonds constant and balanced with fastening surface. Slanted assembly might cause unbalanced bond to the surface. All surfaces where tape is applied must be clean, dry and free from grease and dirt.**

**If cleaning of PCB surfaces is needed, please follow strictly the cleaning instructions of your LED manufacturer - this is important as cleaning shall under no circumstances damage LEDs or other electronics components on the PCB.**

**Further note that optical components shall not be cleaned with any chemicals - only micro fiber cloth may be used to remove fingerprints or other traces from handling.**

Relative intensity of FA11019\_Tina-WW-WHT (XP-G)



D

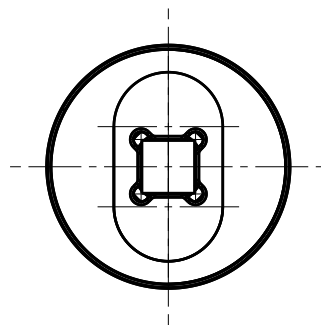
C

B

A

4

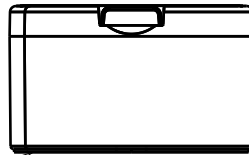
4



Bottom view

3

3



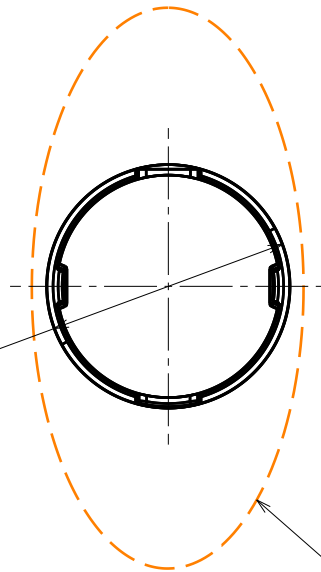
Side view

9.7

Tape

2

2



Top view

Ø16.1

Note! Oval-version beam directions

**MATERIALS**  
 Lens: PMMA  
 Holder: PC  
 Tape: PU Foam

This drawing is our property.  
 It can't be reproduced  
 or communicated without  
 our written agreement.



L  
T  
F  
F

e  
e  
i  
i  
N  
n

d  
h

DRAWING TITLE

Datasheet Assembly Tina-XP

1

1

DRAWN BY

DATE

p

9.8.2011

CHECKED BY

DATE

t

k

25.09.2008

DESIGNED BY

DATE

HH

22.07.2008

SIZE

DRAWING NUMBER

REV

A4

2

SCALE

2:1

WEIGHT (g)

-

SHEET

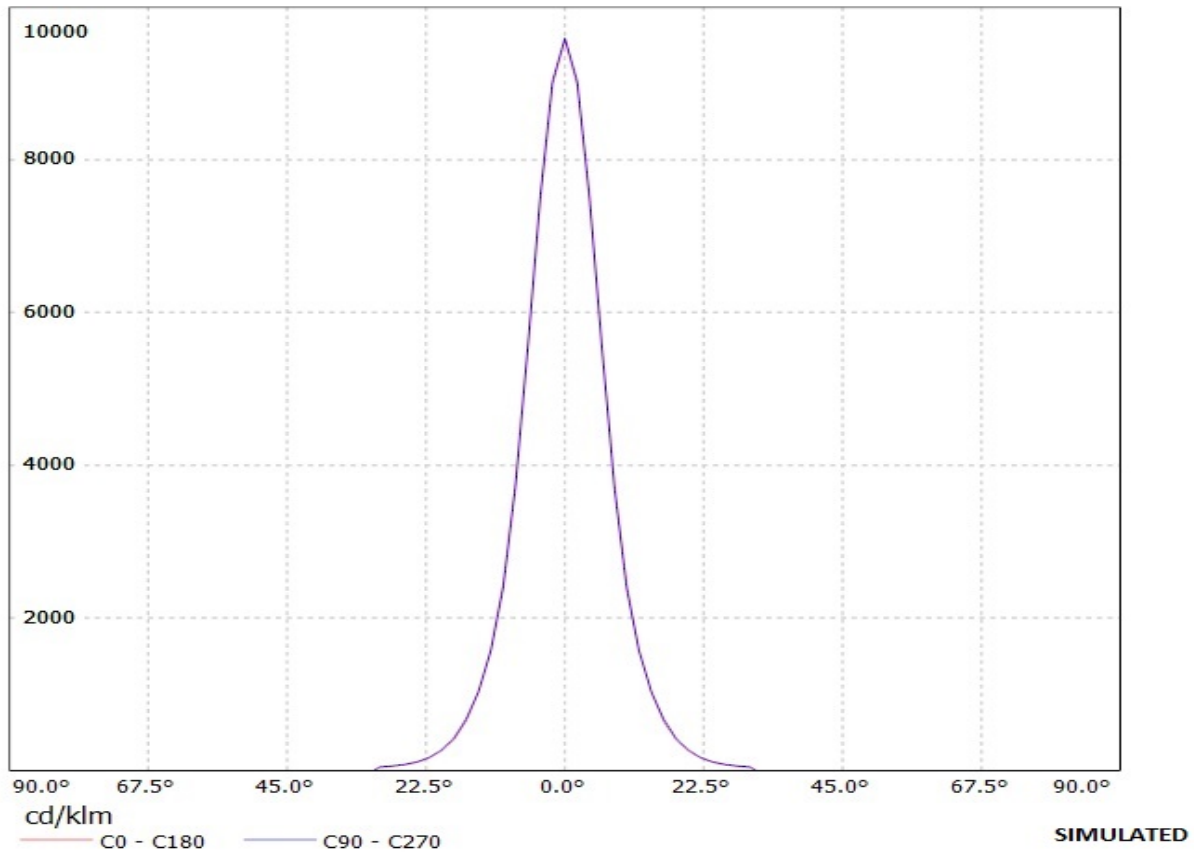
1/1

D

A

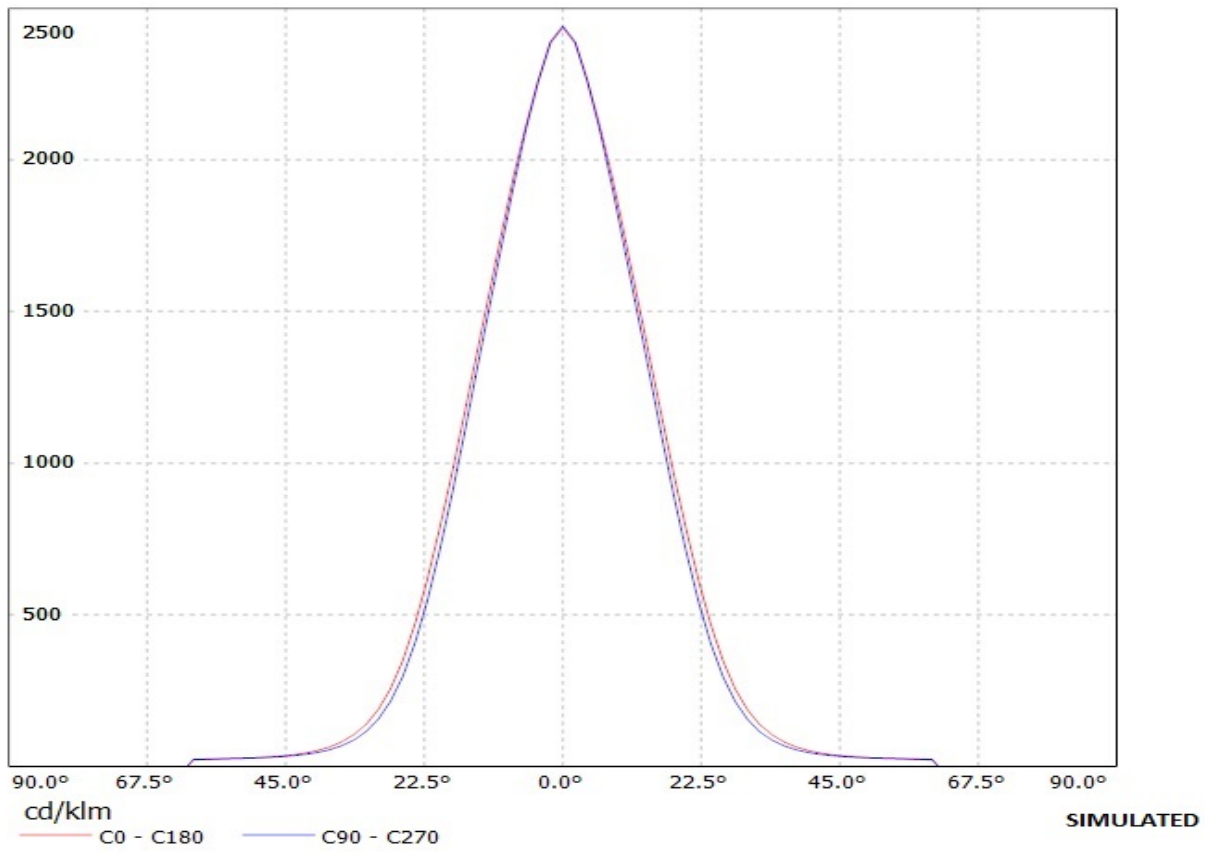
# Ledil Oy FA10644\_Tina-XP-D FA10644\_Tina-XP-D / LDC (Linear)

Luminaire: Ledil Oy FA10644\_Tina-XP-D FA10644\_Tina-XP-D  
Lamps: 1 x Cree XP-E



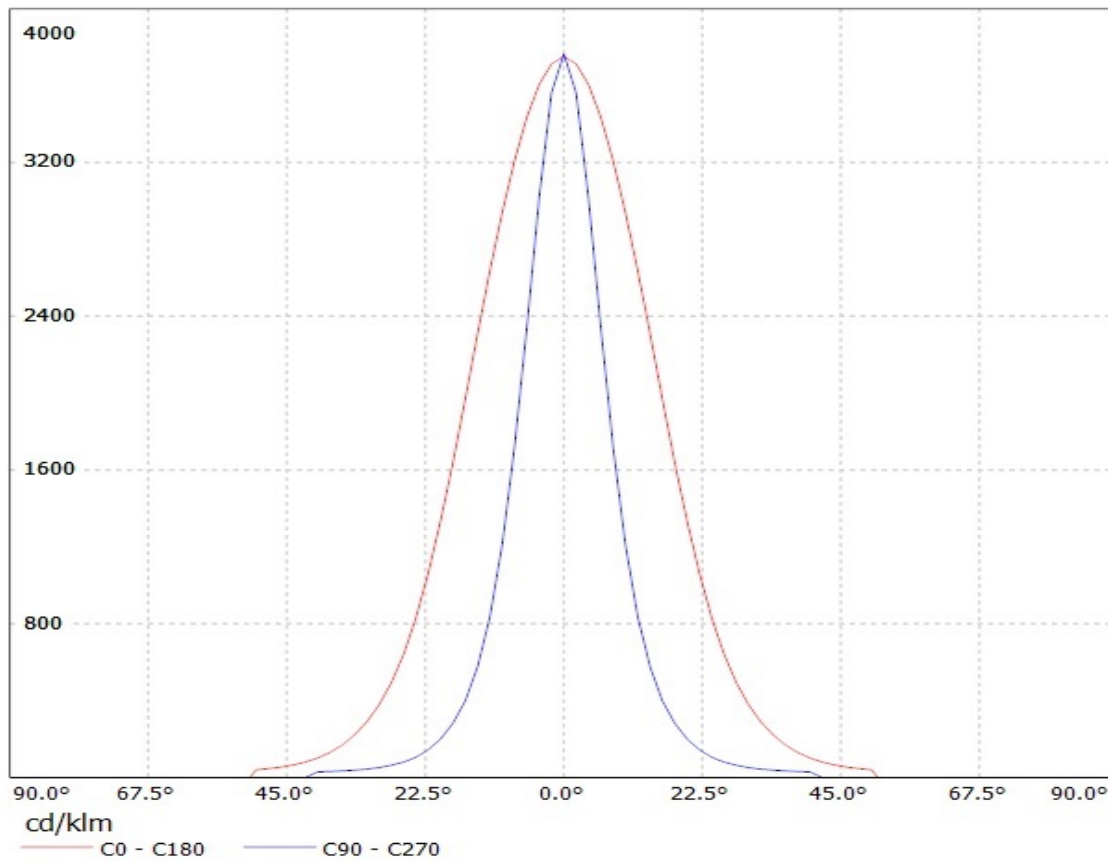
**Ledil Oy F10581\_Tina-XP-M F10581\_Tina-XP-M / LDC (Linear)**

Luminaire: Ledil Oy F10581\_Tina-XP-M F10581\_Tina-XP-M  
Lamps: 1 x Cree XP-E



# FA11200\_Tina-XP-OLedil Oy FA11200\_Tina-XP-O FA11200\_Tina-XP-O / LDC (Linear)

Luminaire: FA11200\_Tina-XP-OLedil Oy FA11200\_Tina-XP-O FA11200\_Tina-XP-O  
Lamps: 1 x Cree XP-E (White)



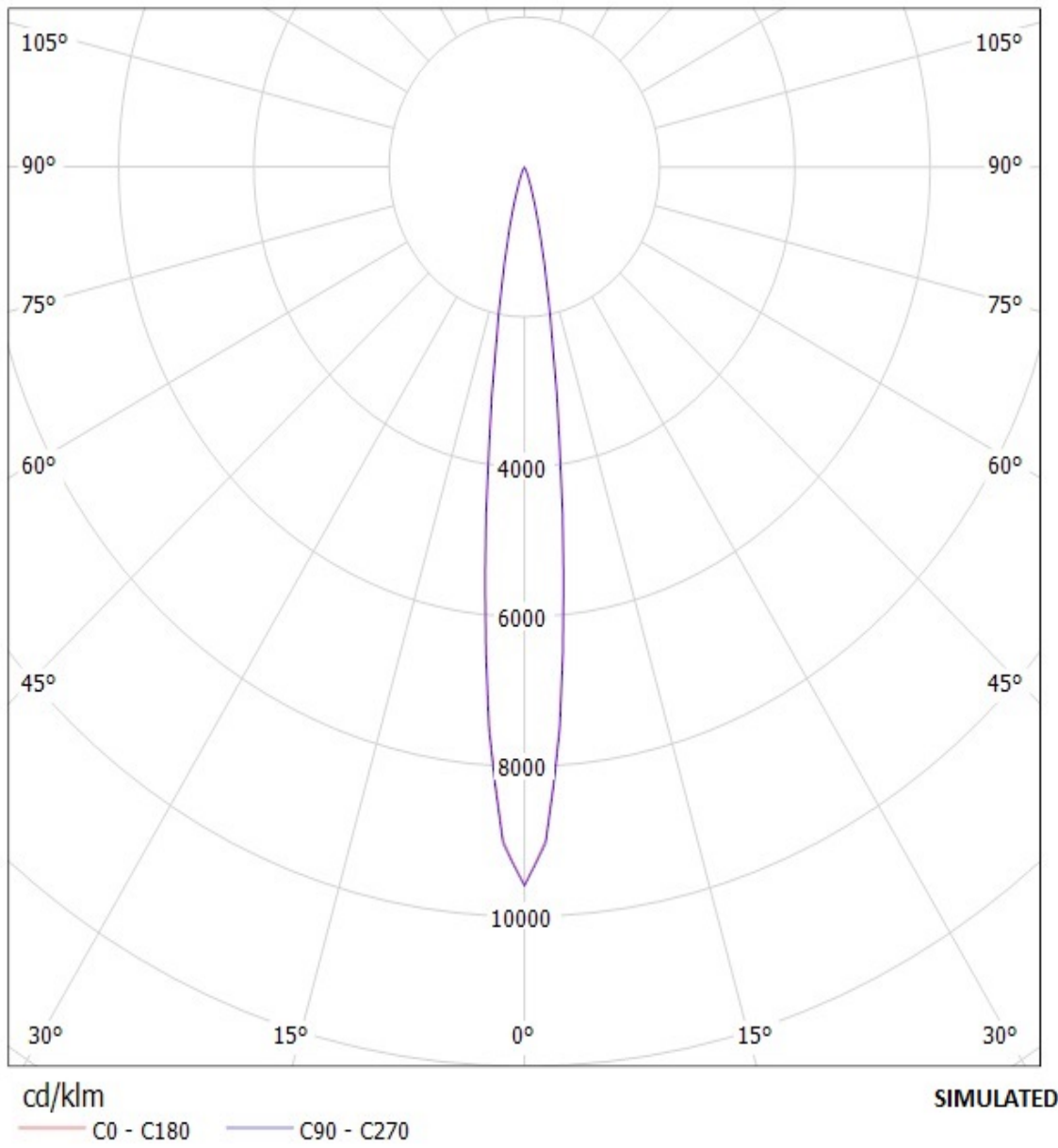
SIMULATED



# Ledil Oy FA10644\_Tina-XP-D FA10644\_Tina-XP-D / LDC (Polar)

Luminaire: Ledil Oy FA10644\_Tina-XP-D FA10644\_Tina-XP-D

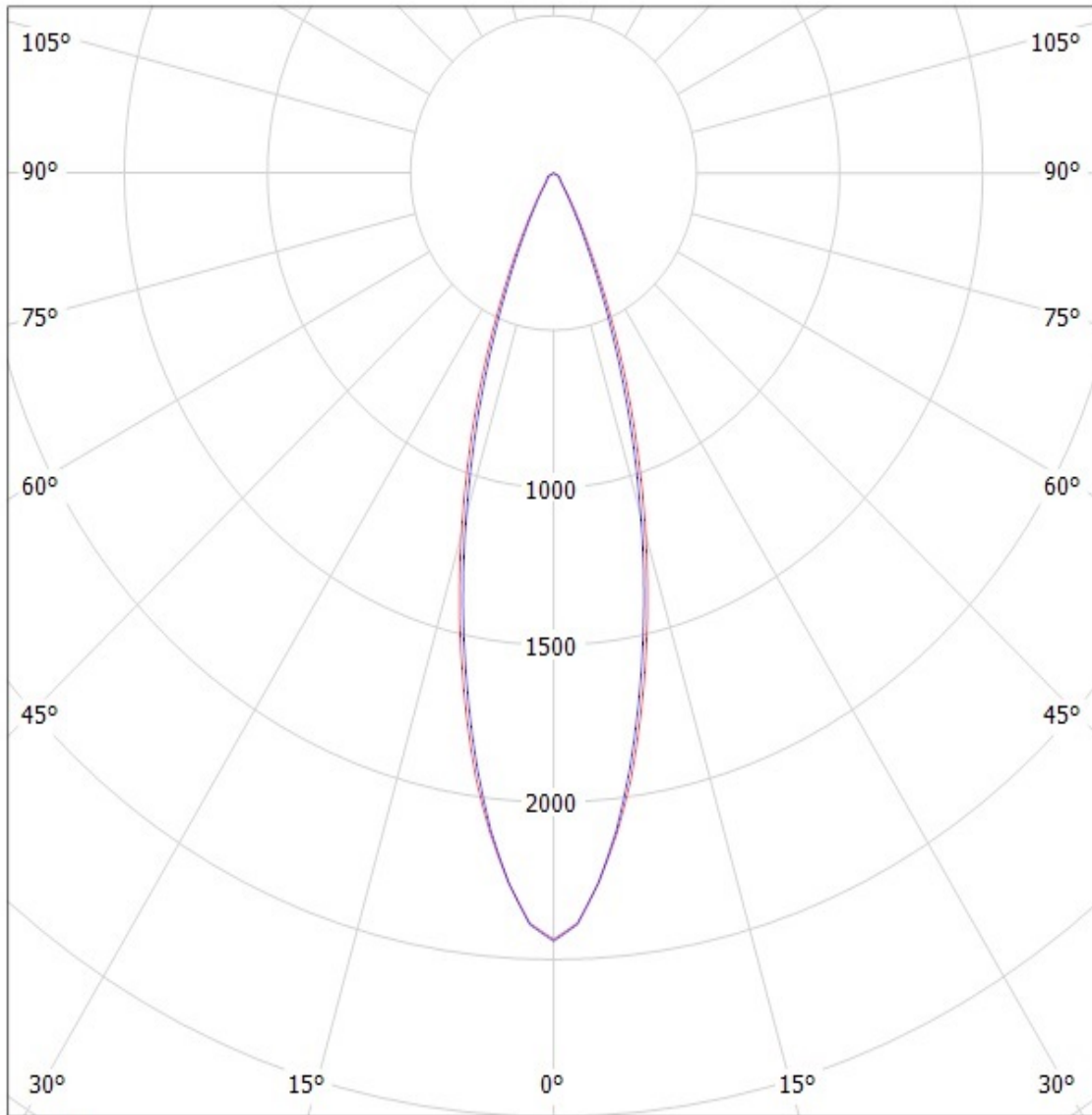
Lamps: 1 x Cree XP-E



# Ledil Oy F10581\_Tina-XP-M F10581\_Tina-XP-M / LDC (Polar)

Luminaire: Ledil Oy F10581\_Tina-XP-M F10581\_Tina-XP-M

Lamps: 1 x Cree XP-E



cd/klm

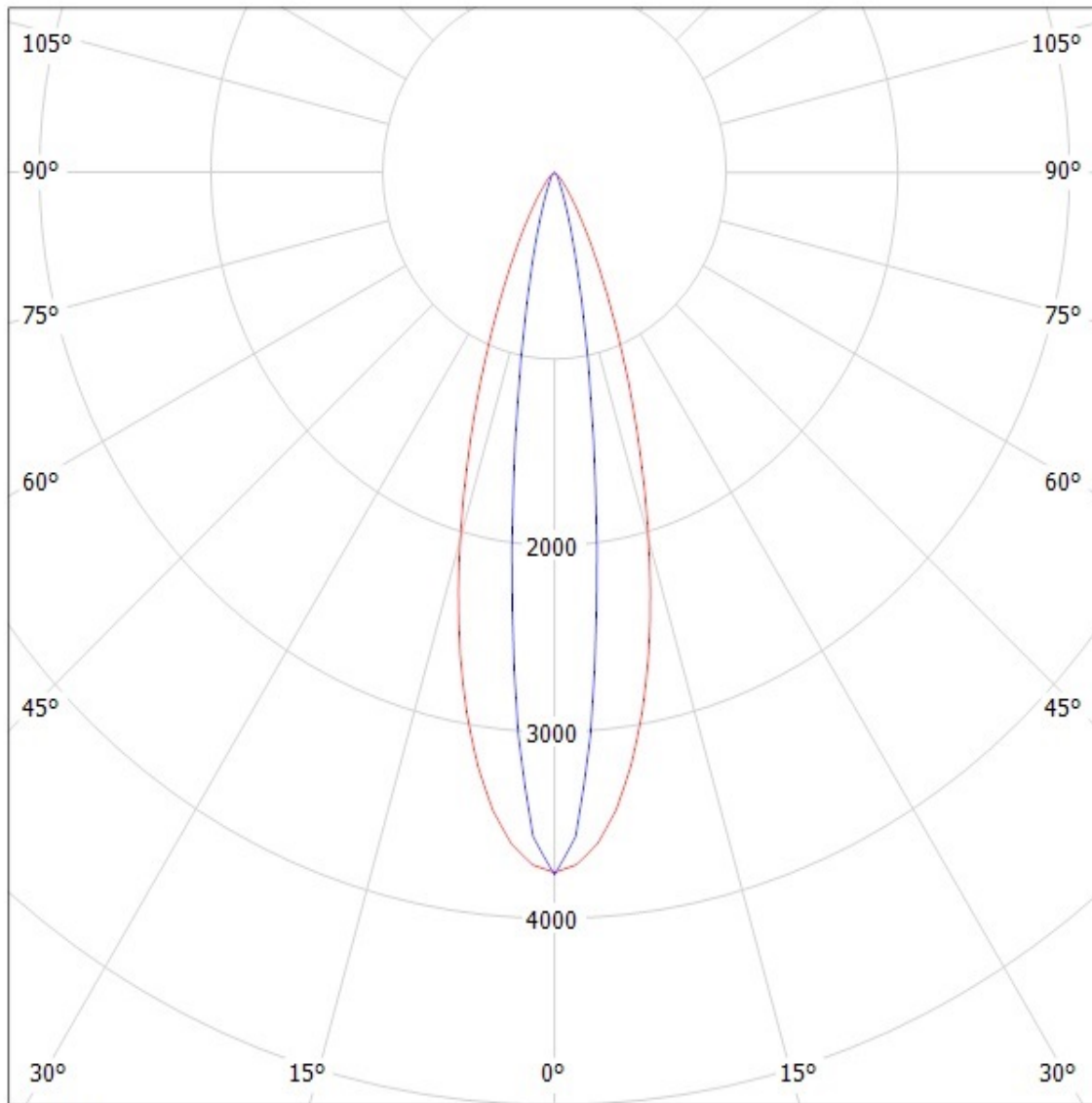
— C0 - C180 — C90 - C270

SIMULATED

# FA11200\_Tina-XP-OLedil Oy FA11200\_Tina-XP-O FA11200\_Tina-XP-O / LDC (Polar)

Luminaire: FA11200\_Tina-XP-OLedil Oy FA11200\_Tina-XP-O FA11200\_Tina-XP-O

Lamps: 1 x Cree XP-E (White)



cd/klm

— C0 - C180 — C90 - C270

SIMULATED