

**Product number C12095\_MINNIE-M**

Family	Minnie	FWHM	26 degrees
Type	Reflector	Efficiency	92 %
LED	MT-G	cd/lm	-
Color	Metal	Gerber File	Available
Diameter	32.4 mm	Version without holder, correct mounting height from the PCB 1,0 mm	
Height	14.75 mm		
Style	Round		
Optic Material	PC		
Holder Material	-		
Fastening	["glue"]		
Status	Production ready		

**Product number CA12239\_MINNIE-M**

Family	Minnie	FWHM	26 degrees
Type	RefAssy	Efficiency	-
LED	MT-G	cd/lm	-
Color	Black	Gerber File	Available
Diameter	35 mm		
Height	15.8 mm		
Style	Round		
Optic Material	-		
Holder Material	-		
Fastening	["tape"]		
Status	Production ready		

**Product number C11862\_MINNIE-W**

Family	Minnie	FWHM	36 degrees
Type	Reflector	Efficiency	92 %
LED	MT-G	cd/lm	-
Color	Metal	Gerber File	Available
Diameter	32.4 mm	Version without holder, correct mounting height from the PCB 1,0 mm	
Height	14.75 mm		
Style	Round		
Optic Material	PC		
Holder Material	-		
Fastening	["glue"]		
Status	Production ready		

**Product number CA12096\_MINNIE-W**

Family	Minnie	FWHM	36 degrees
Type	RefAssy	Efficiency	-
LED	MT-G	cd/lm	-
Color	Black	Gerber File	Available
Diameter	35 mm		
Height	15.8 mm		
Style	Round		
Optic Material	-		
Holder Material	-		
Fastening	["tape"]		
Status	Production ready		

**Product number C12097\_MINNIE-WWW**

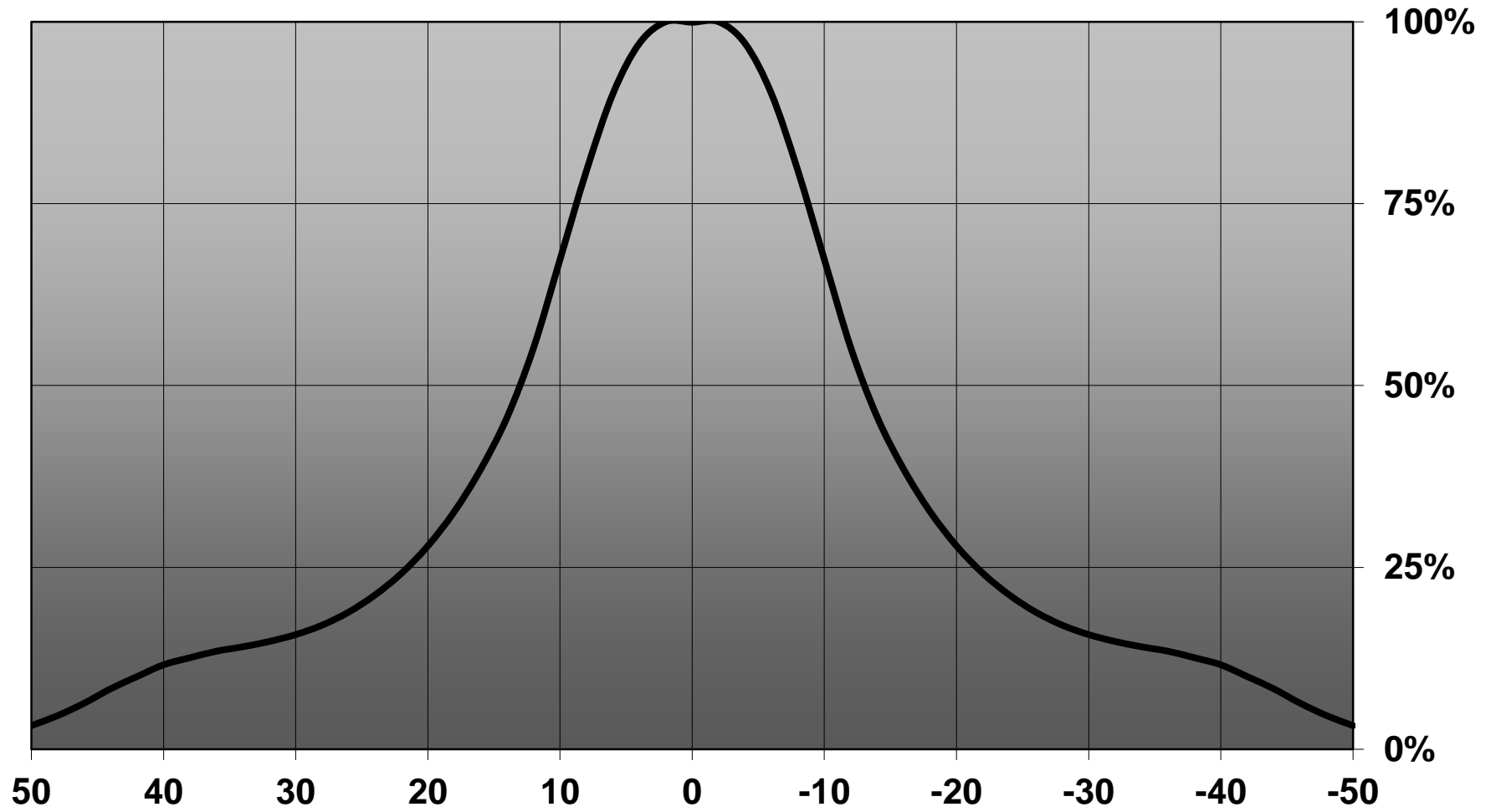
Family	Minnie	FWHM	74 degrees
Type	Reflector	Efficiency	90 %
LED	MT-G	cd/lm	-
Color	Metal	Gerber File	Available
Diameter	32.4 mm	Version without holder, correct mounting height from the PCB 1,0 mm	
Height	14.75 mm		
Style	Round		
Optic Material	PC		
Holder Material	-		
Fastening	["glue"]		
Status	Production ready		

**Product number CA12240\_MINNIE-WWW**

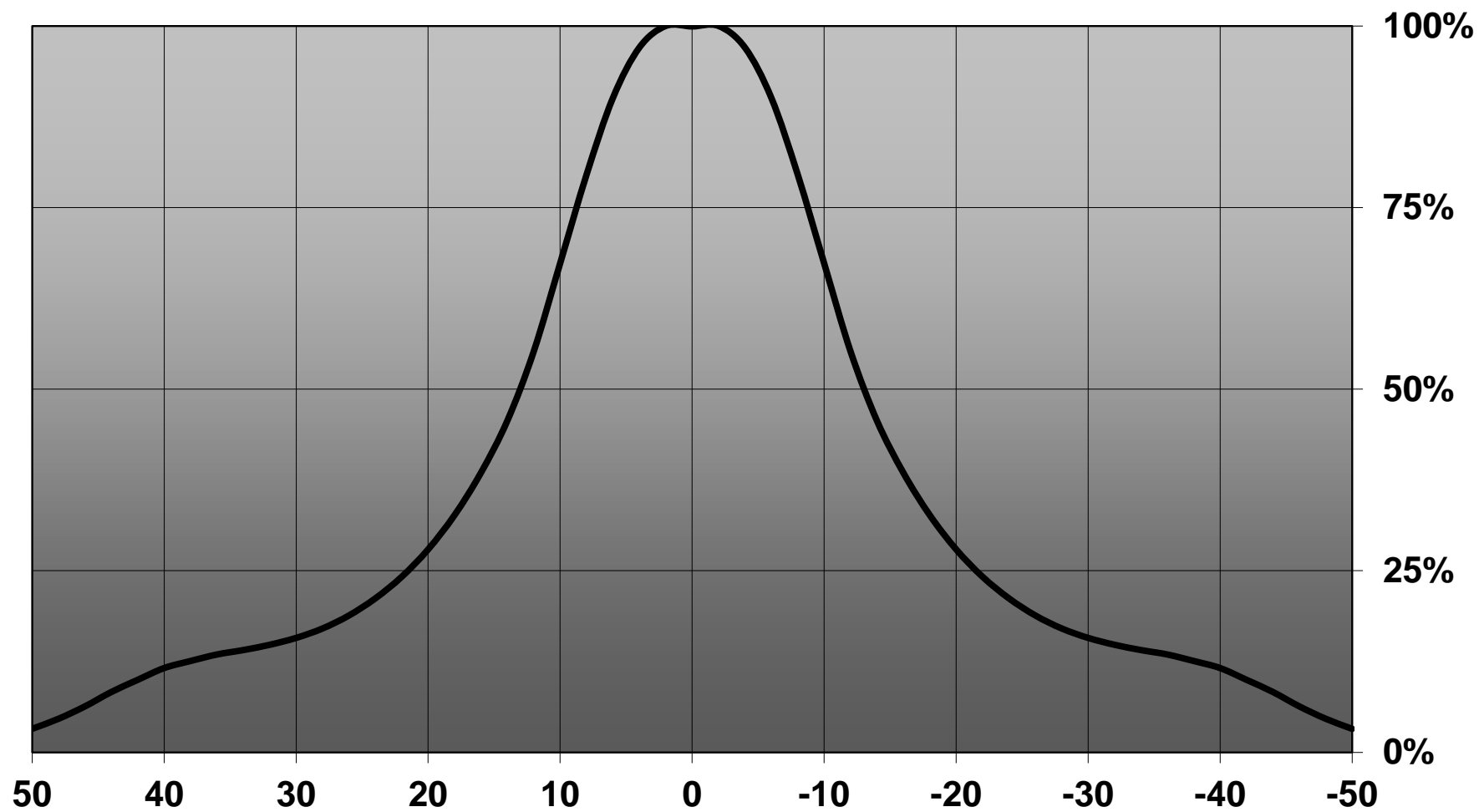
Family	Minnie	FWHM	74 degrees
Type	RefAssy	Efficiency	-
LED	MT-G	cd/lm	-
Color	Black	Gerber File	Available
Diameter	35 mm		
Height	15.8 mm		
Style	Round		
Optic Material	-		
Holder Material	-		
Fastening	["tape"]		
Status	Production ready		

**NOTE: The typical divergence will be changed by different color, chip size and chip position tolerance. The typical total divergence is the full angle measured where the luminous intensity is half of the peak value.**

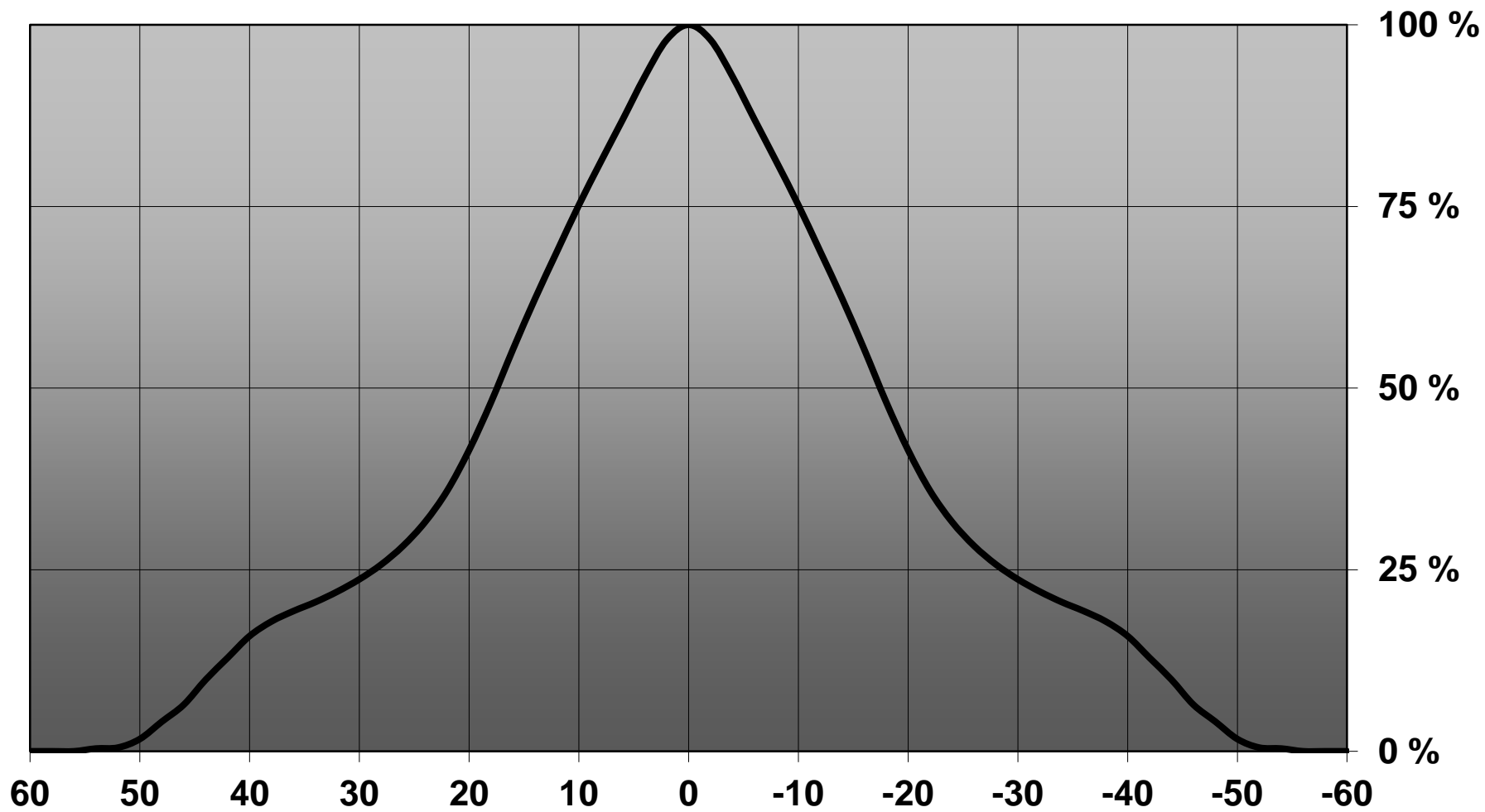
Relative intensity of C12095\_MINNIE-M / CA12239\_MINNIE-M



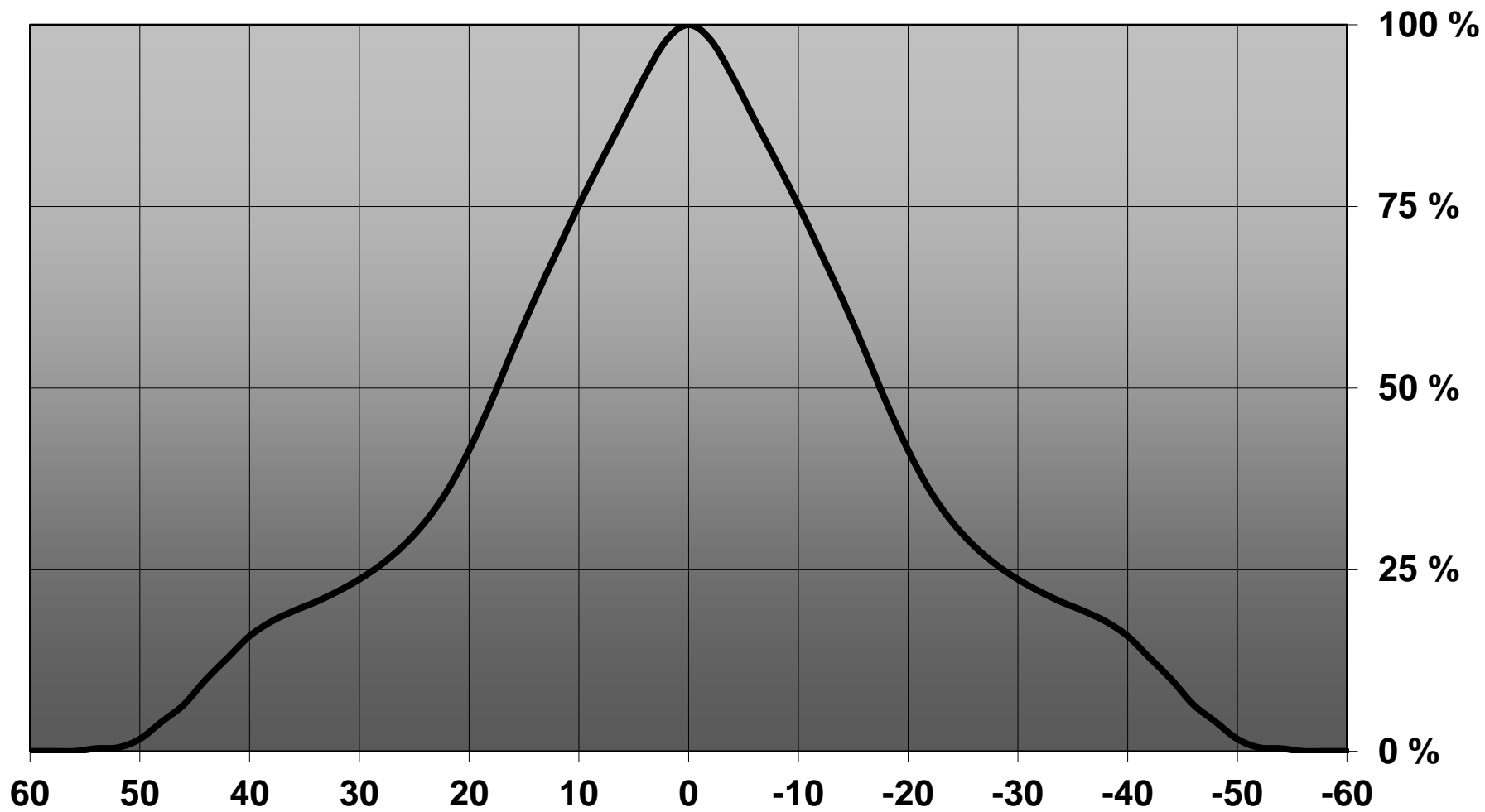
Relative intensity of CA12239\_Minnie-M-MTG-assy



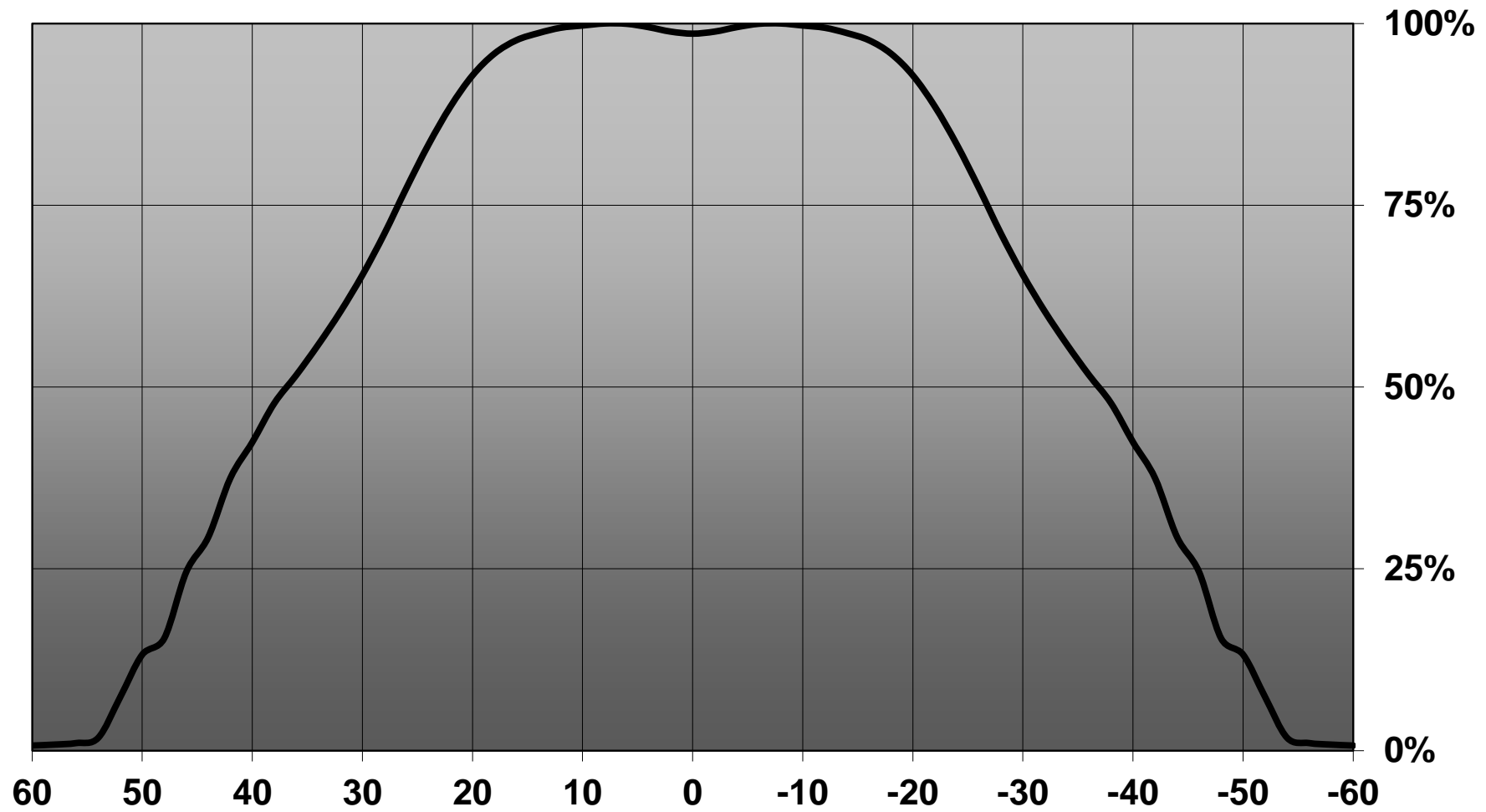
### Relative intensity of Minnie-W-MTG



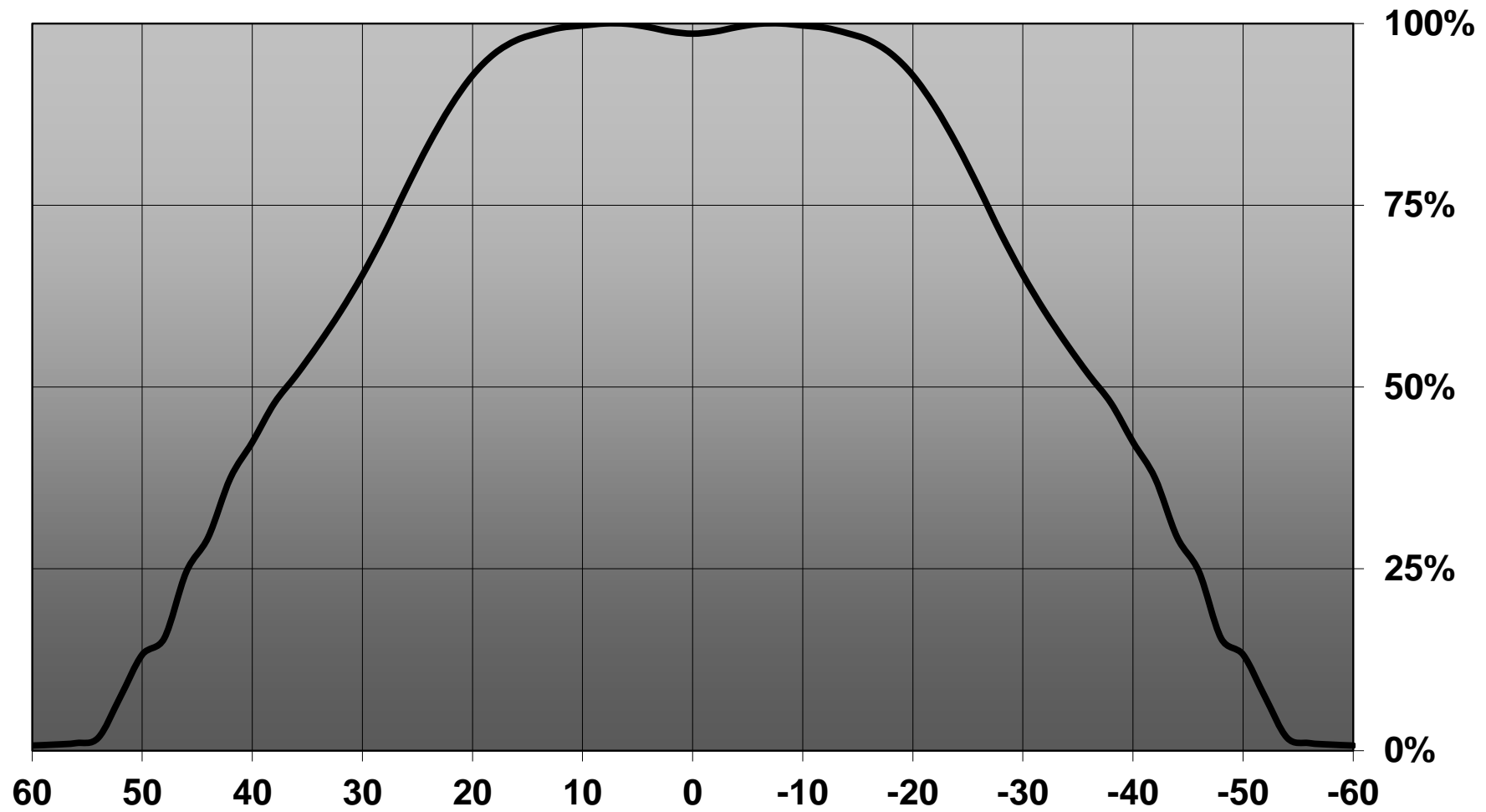
### Relative intensity of Minnie-W-MTG



Relative intensity of CA12240\_Minnie-WWW-MTG-assy



Relative intensity of CA12240\_Minnie-WWW-MTG-assy





D

C

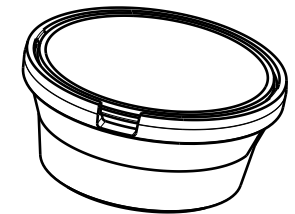
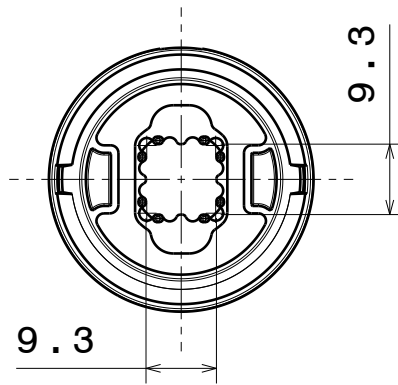
B

A

4

4

Bottom view

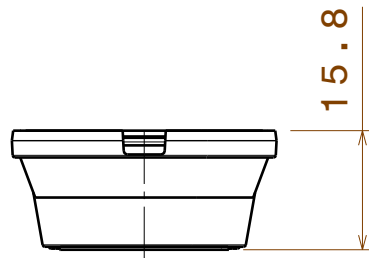


Isometric view

3

3

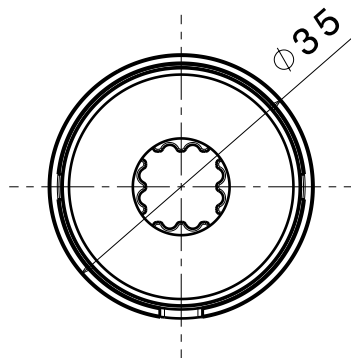
Front view



2

2

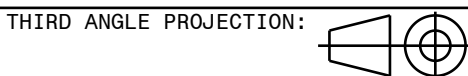
Top view



INDEX	PART NO	DESCRIPTION	MATERIAL	COLOUR
1	-	MINNIE_MTG_ASSEMBLY	Ref1 and holder PC, Tape PU foam	

Tolerances if not otherwise shown  
 According to DIN ISO 2768-1  
 Linear measures:  
 Up to 30mm class M, otherwise class C.  
 According to DIN ISO 2768-2  
 Form and position: class L

**LEDiL**  
 LediL Oy  
 Salorankatu 10  
 FIN 24240 SALO  
 Finland



DRAWING TITLE  
**MINNIE\_MTG\_ASSEMBLY**

This drawing is the property  
 of LEDiL Oy. It may not be  
 reproduced, copied or  
 communicated without a written  
 agreement with LEDiL Oy."

SIZE	PART NUMBER
A4	-

SCALE	1:1	WEIGHT	-	SHEET	1/1
-------	-----	--------	---	-------	-----

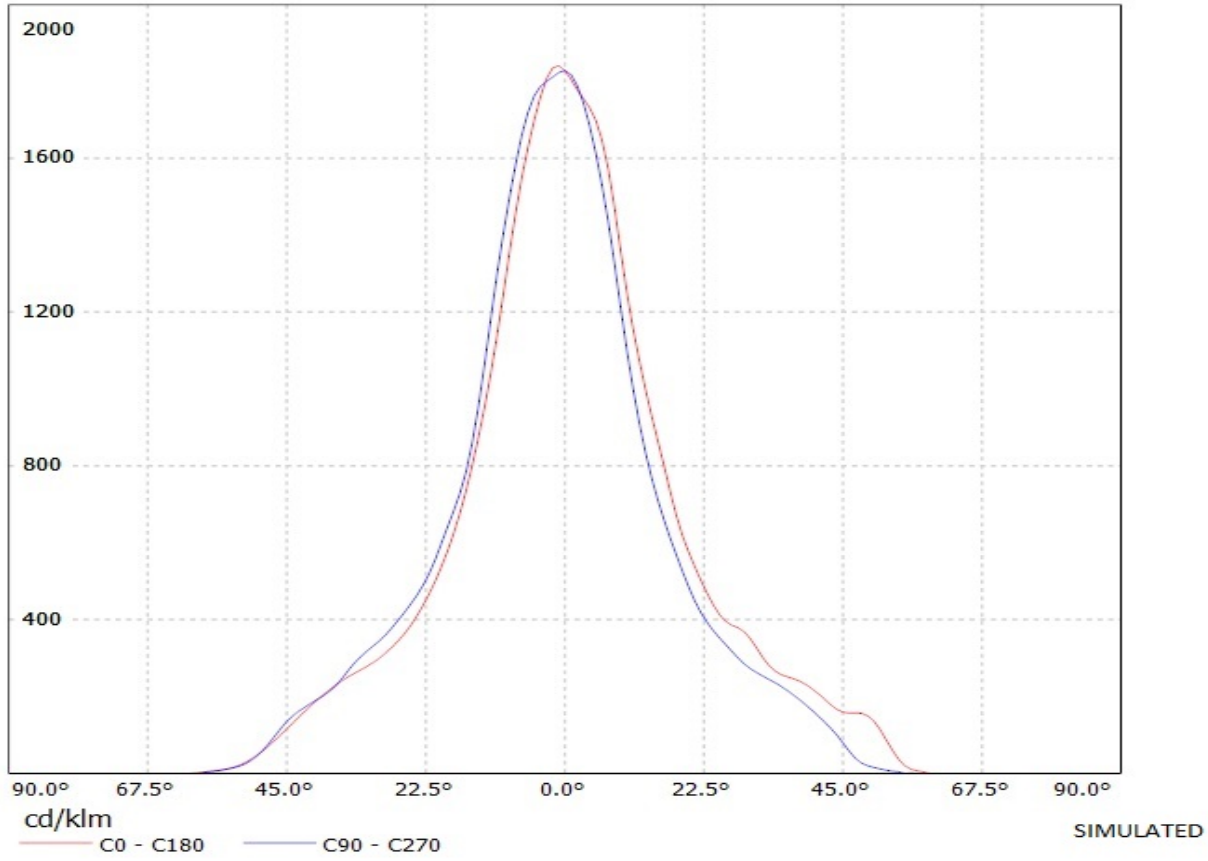
D

A

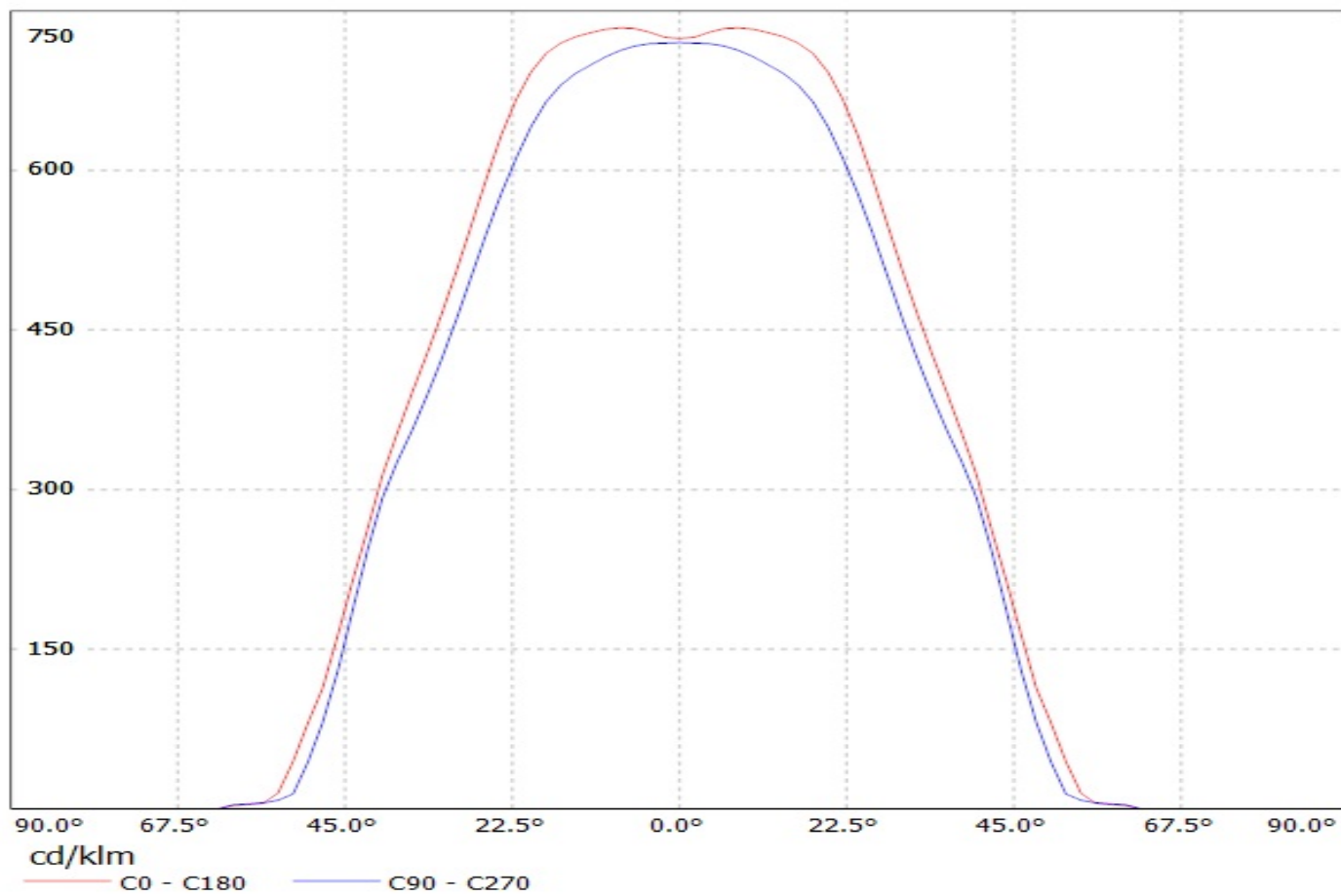
1

# Ledil Oy CA12239\_Minnie-M-MTG / LDC (Linear)

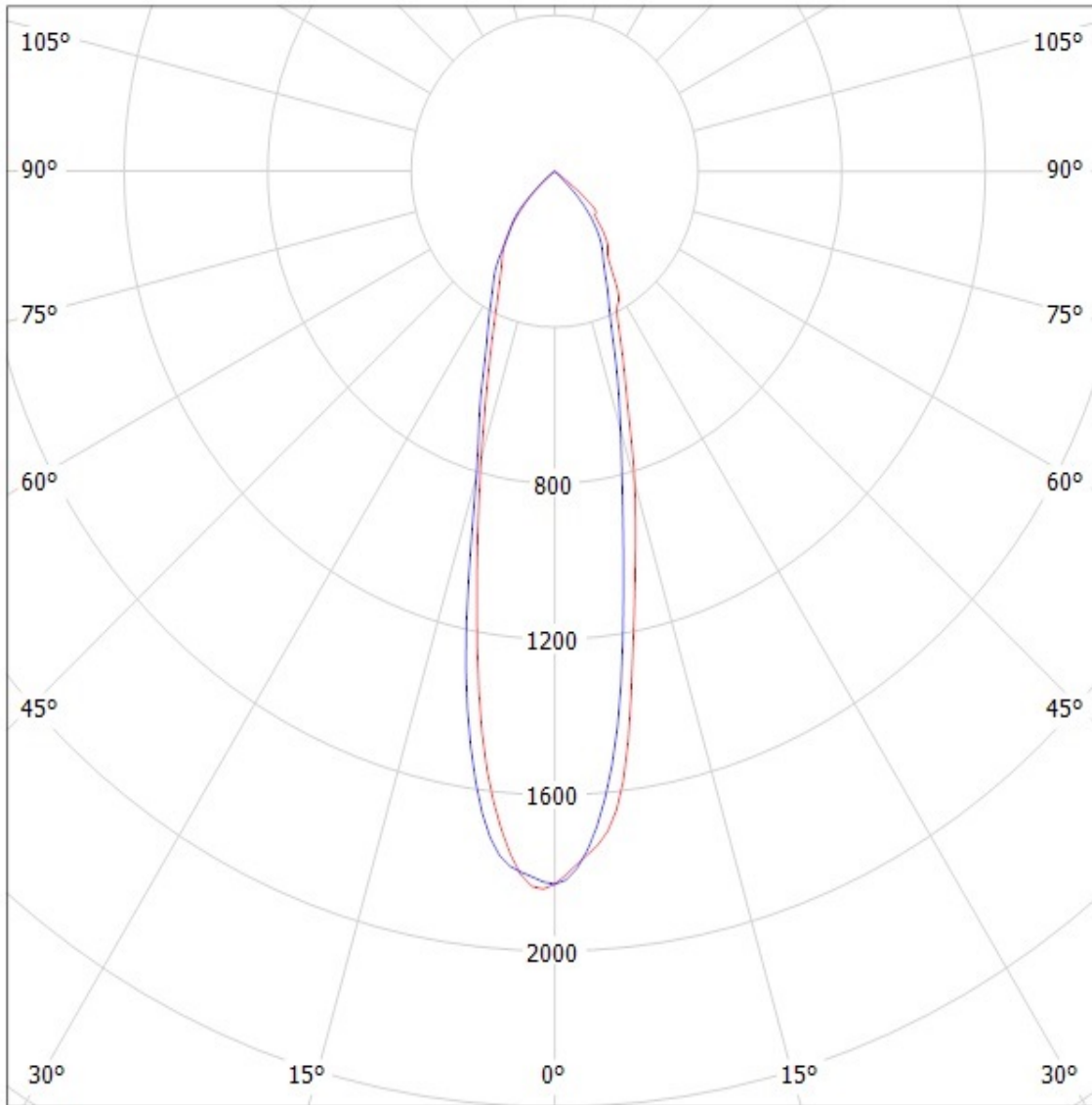
Luminaire: Ledil Oy CA12239\_Minnie-M-MTG  
Lamps: 1 x Cree MT-G 745lm 250mA



Luminaire: Ledil Oy C12097\_Minnie-WWW-MTG C12097\_Minnie-WWW-MTG  
Lamps: 1 x Cree MT-G 36V 745lm 250m



Luminaire: Ledil Oy CA12239\_Minnie-M-MTG  
Lamps: 1 x Cree MT-G 745lm 250mA

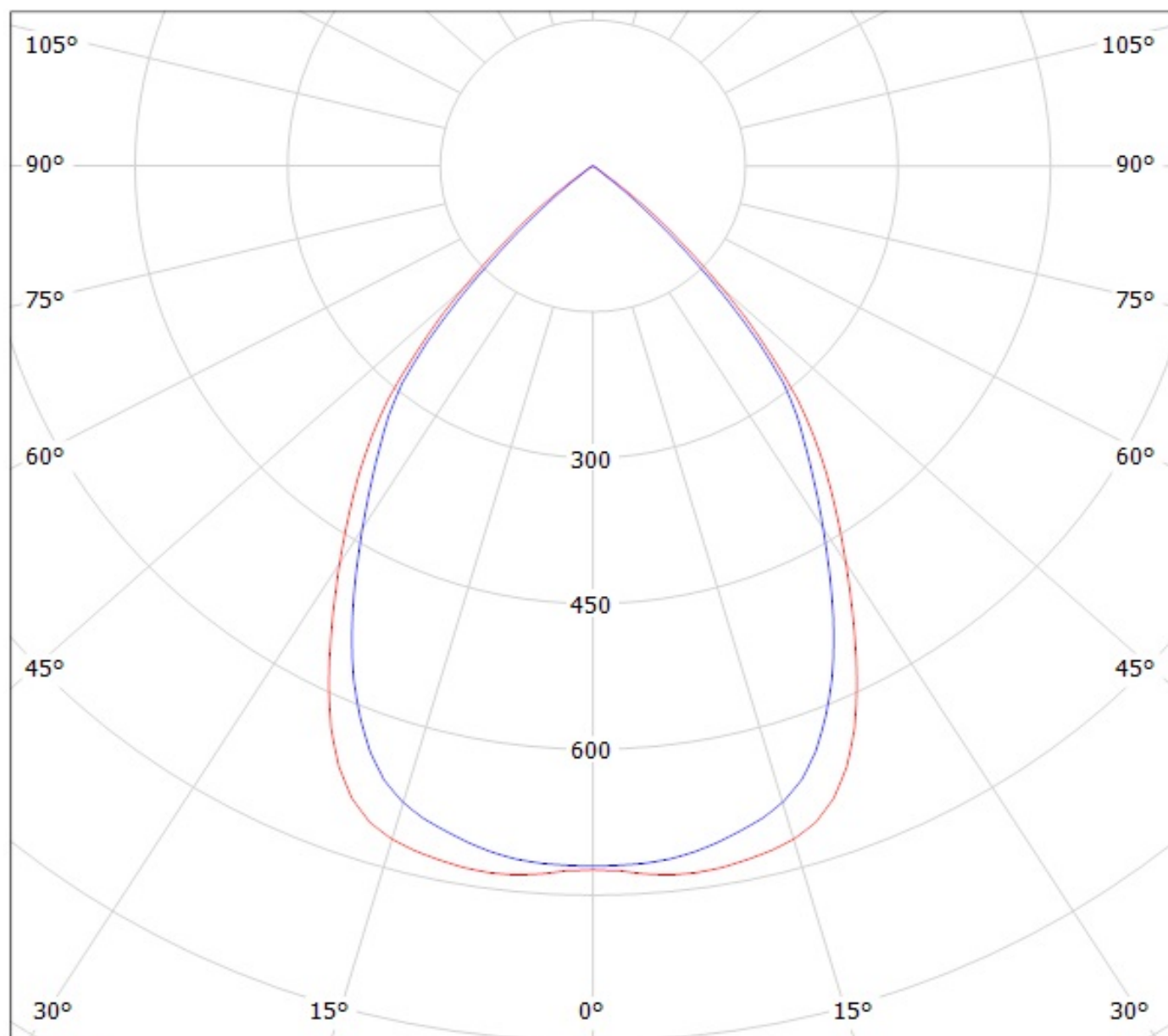


cd/klm

— C0 - C180    — C90 - C270

SIMULATED

Luminaire: Ledil Oy C12097\_Minnie-WWW-MTG C12097\_Minnie-WWW-MTG  
Lamps: 1 x Cree MT-G 36V 745lm 250m



cd/klm

— C0 - C180 — C90 - C270