

**Product number C10946_FLARE-B**

Family	Flare	FWHM	12+96 degrees
Type	Lens	Efficiency	94 %
LED	XP-E	cd/lm	-
Color	Clear	Gerber File	Available
Diameter	29 x 23 mm		
Height	12.69 mm		
Style	Rectang		
Optic Material	PMMA		
Holder Material	-		
Fastening	["glue", "screw"]		
Status	Production ready		

**Product number C12763_FLARE-MINI-A**

Family	Flare	FWHM	95+17 degrees
Type	Lens	Efficiency	95 %
LED	XP-E	cd/lm	1.600
Color	Clear	Gerber File	Available
Diameter	16 mm		
Height	8.6 mm		
Style	Round		
Optic Material	PMMA		
Holder Material	-		
Fastening	["glue"]		
Status	Production ready		

**Product number C12837_FLARE-MINI-A-PIN**

Family	Flare	FWHM	95+17 degrees
Type	Lens	Efficiency	95 %
LED	XP-E	cd/lm	1.500
Color	Clear	Gerber File	Available
Diameter	16 mm		
Height	8.6 mm		
Style	Round		
Optic Material	PMMA		
Holder Material	-		
Fastening	["glue", "pin"]		
Status	Production ready		

**Product number CA10932_FLARE-B**

Family	Flare	FWHM	102+10 degrees
Type	Assembly	Efficiency	93 %
LED	XP-E	cd/lm	1.750
Color	Clear	Gerber File	Available
Diameter	29 x 22.8 mm		
Height	12.84 mm		
Style	Rectang		
Optic Material	PMMA		
Holder Material	-		
Fastening	["screw", "tape"]		
Status	Production ready		

**Product number CA12764_FLARE-MINI-A**

Family	Flare	FWHM	113+20 degrees
Type	Assembly	Efficiency	94 %
LED	XP-E	cd/lm	0.900
Color	Clear	Gerber File	Available
Diameter	16 mm		
Height	9.1 mm		
Style	Round		
Optic Material	PMMA		
Holder Material	-		
Fastening	["tape"]		
Status	Production ready		

Product number CA12838_FLARE-MINI-A-PIN

Family	Flare	FWHM	113+20 degrees
Type	Assembly	Efficiency	94 %
LED	XP-E	cd/lm	0.900
Color	Clear	Gerber File	Available
Diameter	16 mm		
Height	9.1 mm		
Style	Round		
Optic Material	PMMA		
Holder Material	-		
Fastening	["tape", "pin"]		
Status	Production ready		

NOTE: The typical divergence will be changed by different color, chip size and chip position tolerance. The typical total divergence is the full angle measured where the luminous intensity is half of the peak value.



PRODUCT DATASHEET

Flare series

last update 2/12/2016

GENERAL INFORMATION

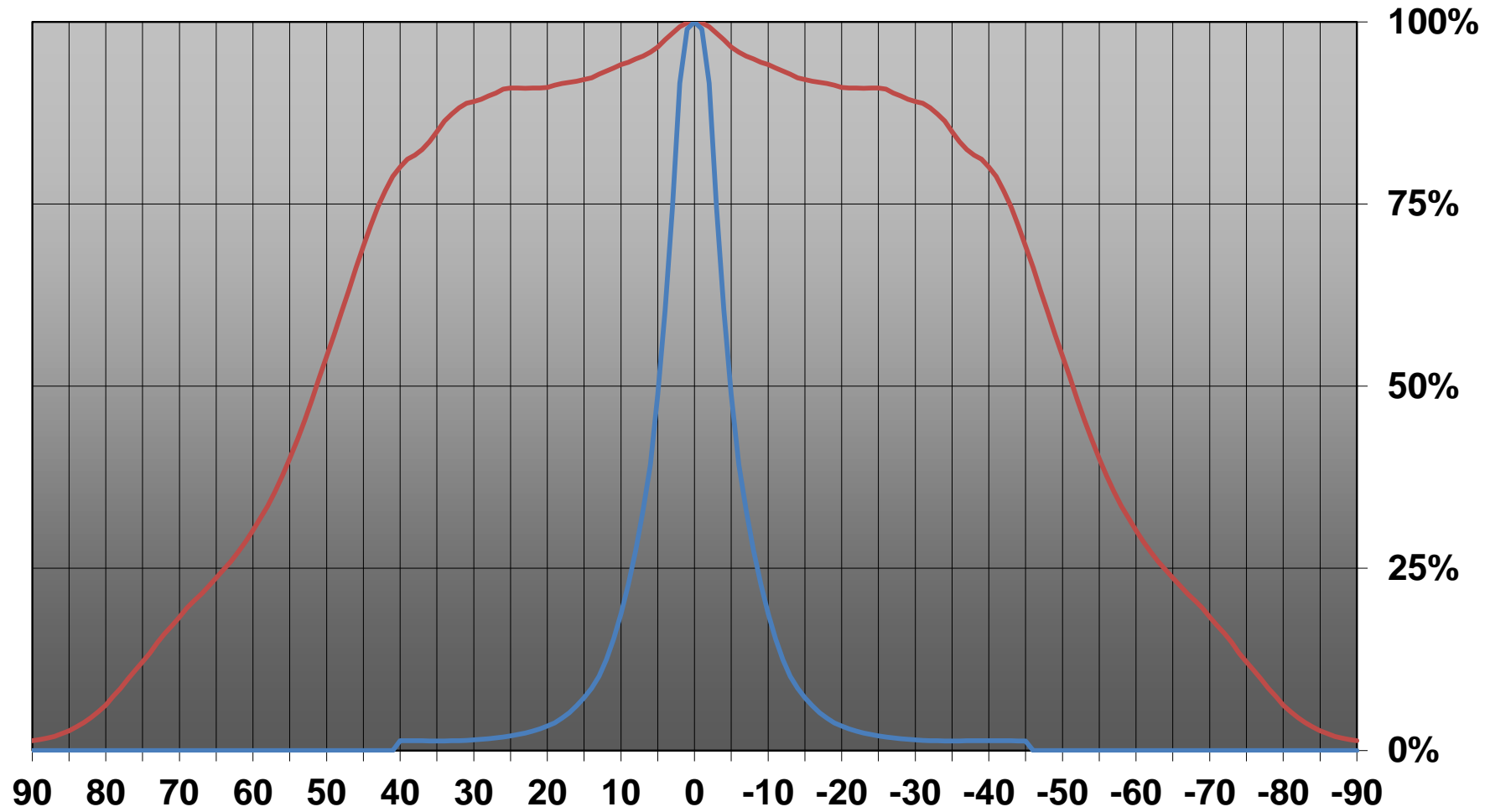
- Product series especially designed & optimized for XP-E series of LEDs.
- Special care taken to make light distribution as uniform as possible.
- Lens material optical grade PMMA with high UV and temperature resistance. Allows use of high current and temperature conditions.

Please find more information about used material from below:

http://ledil.fi/sites/default/files/Documents/Technical/Material/PMMA%20N%20UL94_Yellow%20Card.pdf

<http://ledil.fi/sites/default/files/Documents/Technical/Material/PMMA%20N%20PLEXIGLAS-Datasheet.pdf>

Relative intensity of CA10932_FLARE-B_(XP-E)



D

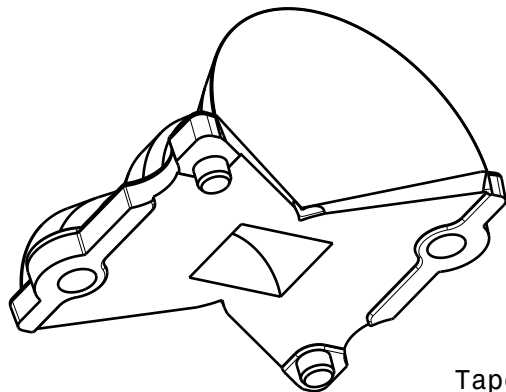
C

B

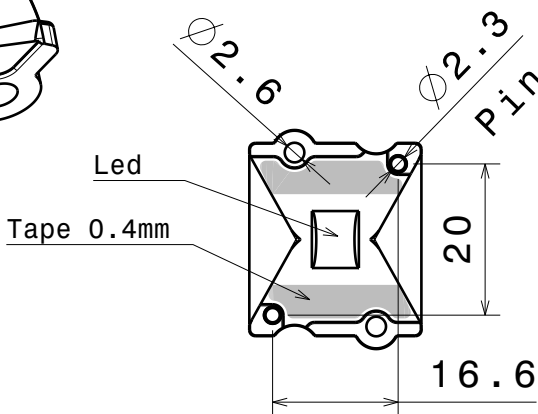
A

4

4



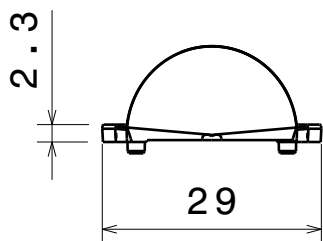
Isometric view
2:1



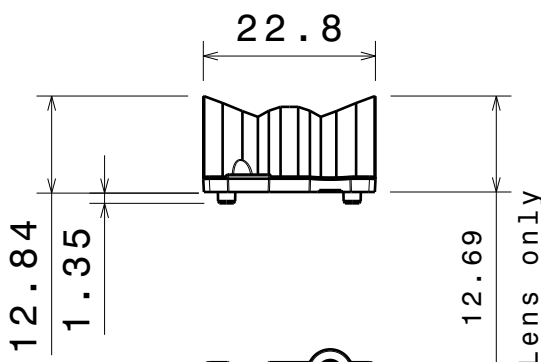
Bottom view

3

3



Right view

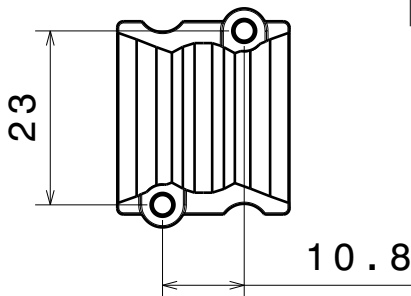


Front view

Part no.s:
CA10932_Flare-B

Part no. without tape fastening:
C10946_Flare-B

MATERIALS
Lens: PMMA
Tape: PU Foam



Top view

2

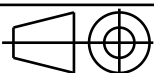
2

Tolerances if not otherwise shown
According to DIN ISO 2768-1
Linear measures:
Up to 30mm class M, otherwise class C.
According to DIN ISO 2768-2
Form and position: class L

LEDiL

Ledil Oy
Salorankatu 10
FIN 24240 SALO
Finland

THIRD ANGLE PROJECTION:



DRAWING TITLE

FLARE-B series

This drawing is the property
of LEDiL Oy. It may not be
reproduced, copied or
communicated without a written
agreement with LEDiL Oy.

SIZE PART NUMBER

A4

-

SCALE 1:1 WEIGHT

-

SHEET 1/1

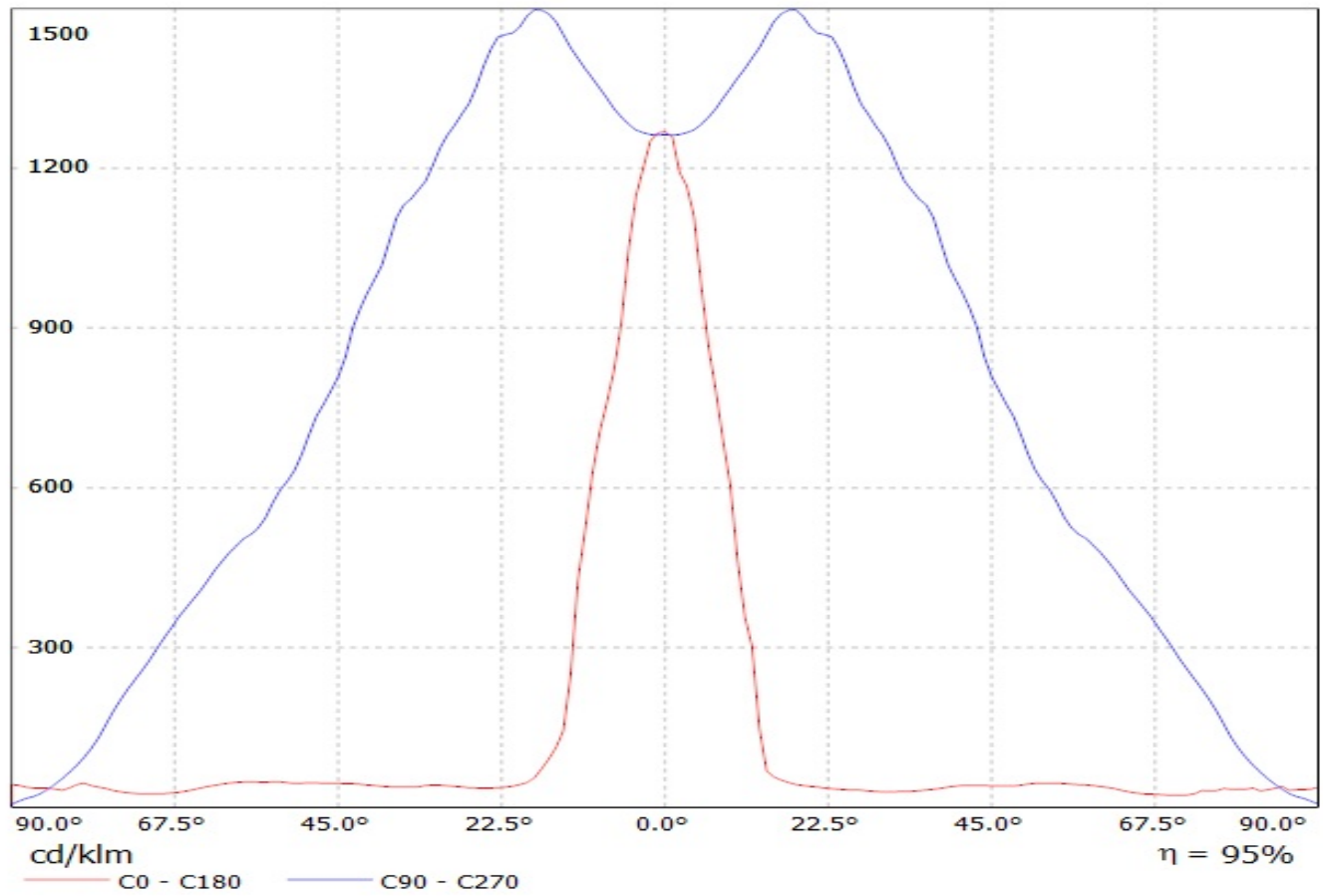
1

1

D

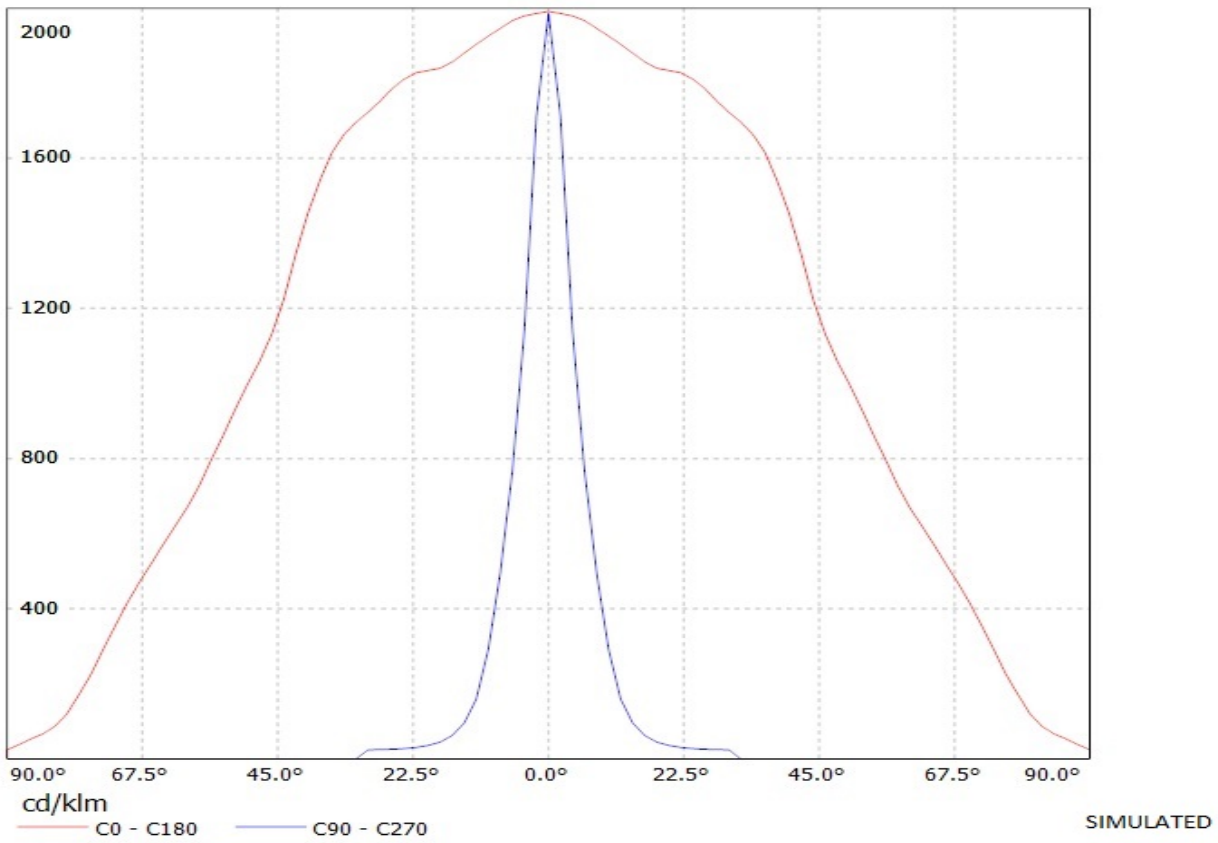
A

Luminaire: LEDIL OY C12763 & C12837_FLARE-MINI-A (XP-E) Efficiency=95%
Lamps: 1 x Cree XP-E (74lm@250mA)

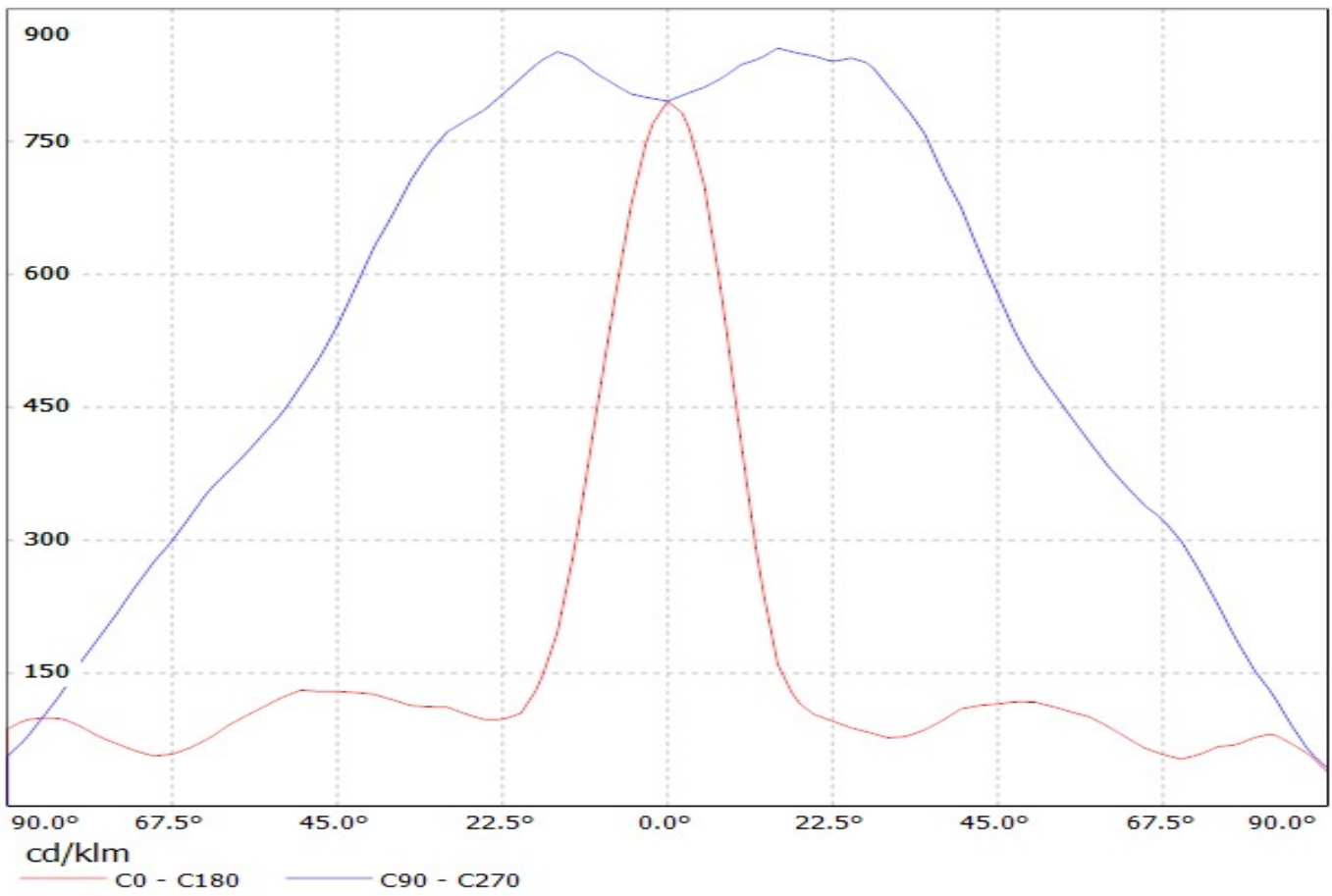


Ledil Oy CA10932_Flare-B-XP-tape CA10932_Flare-B-XP-tape / LDC (Linear)

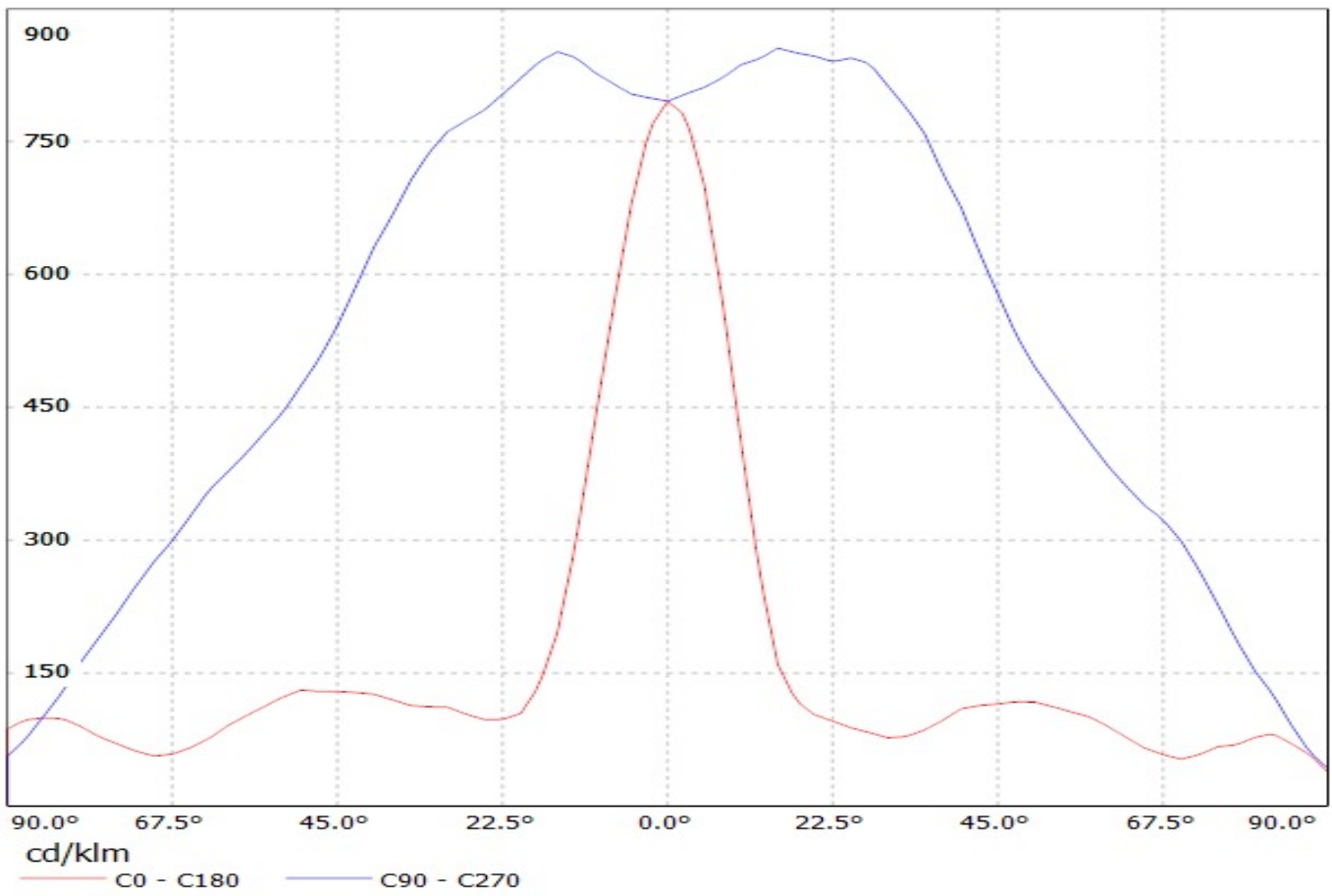
Luminaire: Ledil Oy CA10932_Flare-B-XP-tape CA10932_Flare-B-XP-tape
Lamps: 1 x Cree XP-E (White)



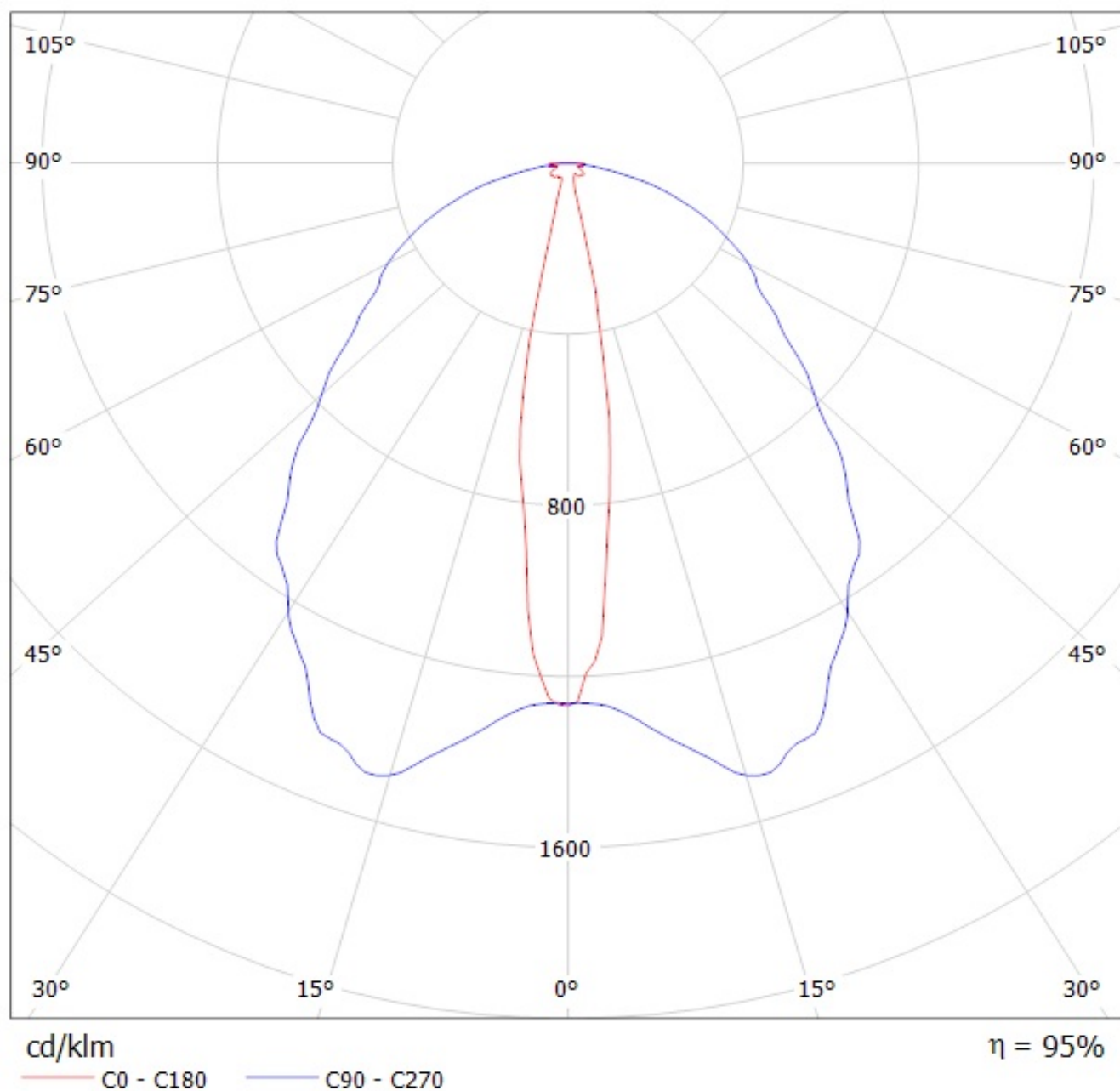
Luminaire: Ledil Oy CA12764&CA12838_FLARE-MINI-A (Cree XP-E 76lm @ 250mA) Efficiency=94%
Lamps: 1 x Cree XP-E 76lm @ 250mA



Luminaire: Ledil Oy CA12764&CA12838_FLARE-MINI-A (Cree XP-E 76lm @ 250mA) Efficiency=94%
Lamps: 1 x Cree XP-E 76lm @ 250mA



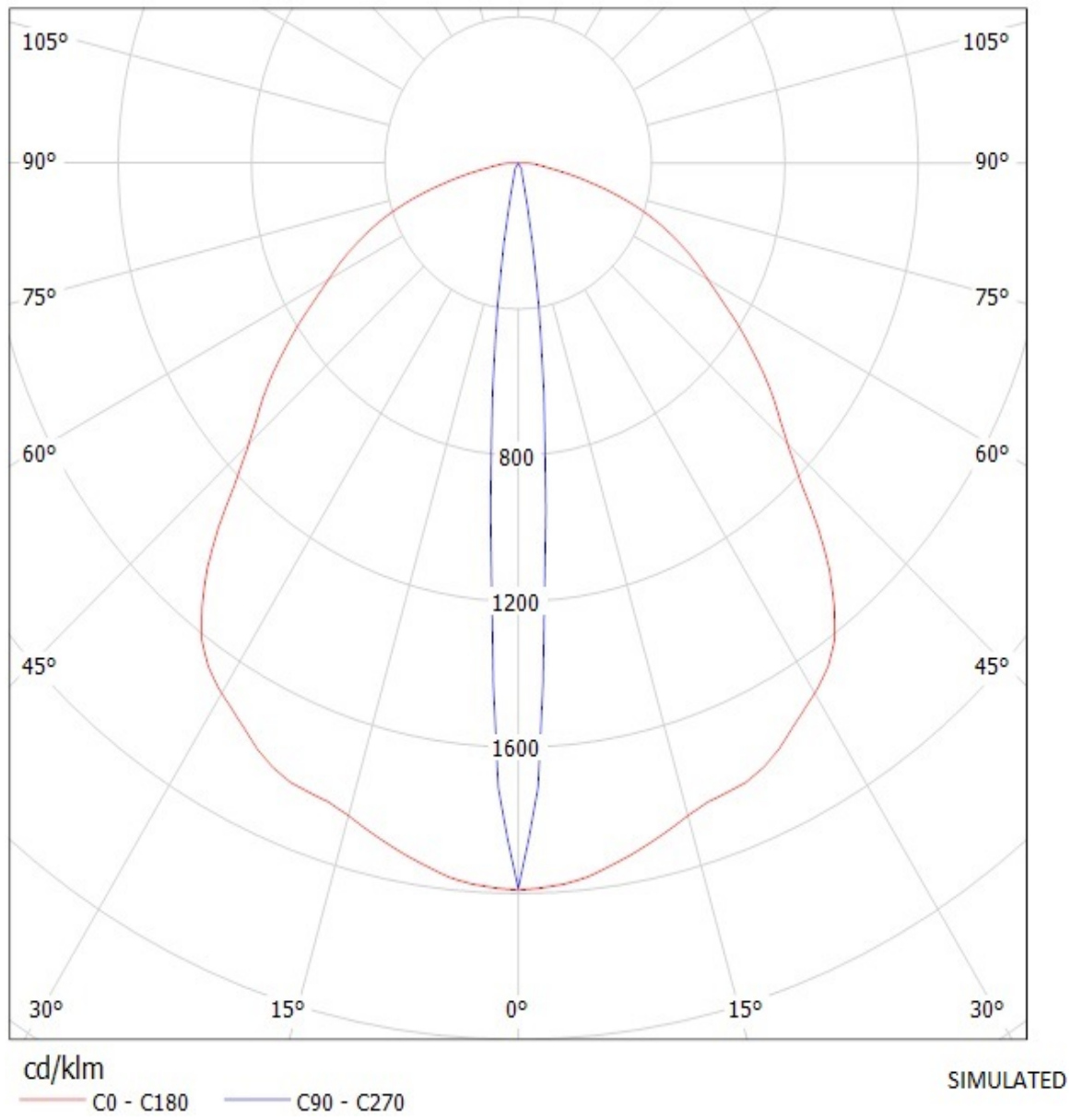
Luminaire: LEDIL OY C12763 & C12837_FLARE-MINI-A (XP-E) Efficiency=95%
Lamps: 1 x Cree XP-E (74lm@250mA)



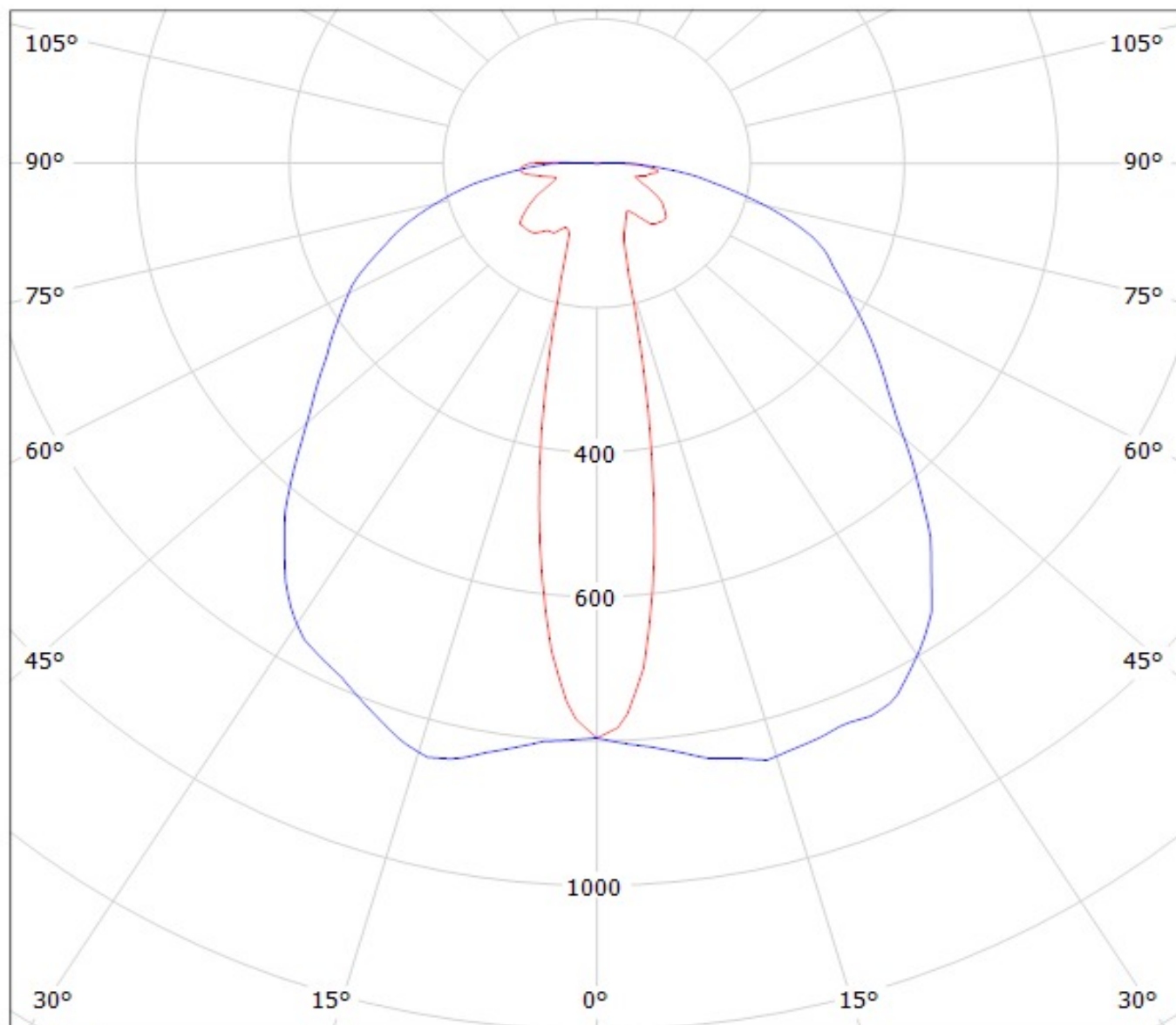
Ledil Oy CA10932_Flare-B-XP-tape CA10932_Flare-B-XP-tape / LDC (Polar)

Luminaire: Ledil Oy CA10932_Flare-B-XP-tape CA10932_Flare-B-XP-tape

Lamps: 1 x Cree XP-E (White)



Luminaire: Ledil Oy CA12764&CA12838_FLARE-MINI-A (Cree XP-E 76lm @ 250mA) Efficiency=94%
Lamps: 1 x Cree XP-E 76lm @ 250mA

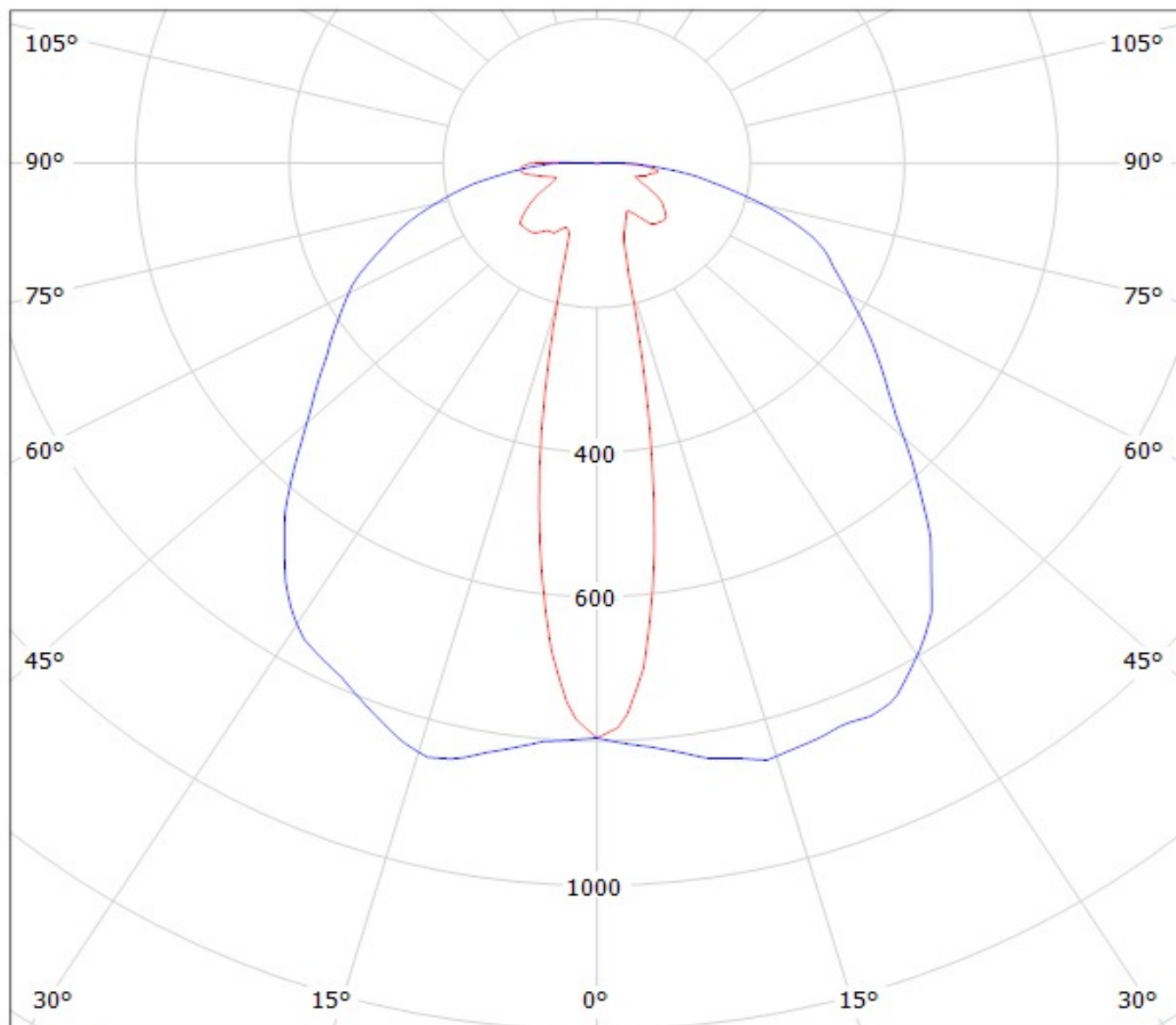


cd/klm

— C0 - C180

— C90 - C270

Luminaire: Ledil Oy CA12764&CA12838_FLARE-MINI-A (Cree XP-E 76lm @ 250mA) Efficiency=94%
Lamps: 1 x Cree XP-E 76lm @ 250mA



cd/klm

— C0 - C180

— C90 - C270