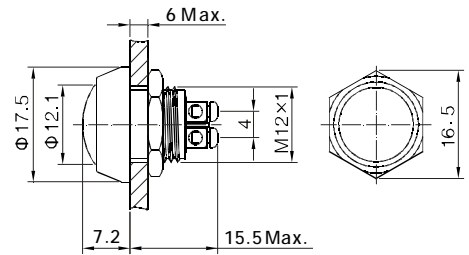


ANTI-VANDAL PUSH BUTTON



SW-GQ12B

- ⊙ Φ 12mm diameter
- ⊙ Switch rating: 2A/36VDC
- ⊙ Contact Configuration: 1NO
- ⊙ Operation Type: Momentary
- ⊙ The crust material: Stainless Steel/
Nickel Plated Brass
- ⊙ IP Degree: IP65



Specification	SW-GQ12B		
Terminal Type	Screw Terminals		
Switching	No.1		
Max. Switch Rating	2A/36VDC		
Contact Resistance	$\leq 50m\Omega$		
Insulation Resistance	$\geq 1000M\Omega$		
Dielectric Strength	2000VAC		
Operating Temp	$-20^{\circ}C \sim +55^{\circ}C$		
Mechanical life	1,000,000 cycles		
Electrical life	200,000 cycles		
Panel Thickness	1 ~ 6mm		
Torque	5 ~ 14Nm		
Operation Pressure	About 5N		
Operation Distance	About 2.5mm		
IP Degree	IP65		
Material	Contact	Silver Alloy	
	Button	Stainless Steel/Nickel Plated Brass	
	Body	Stainless Steel/Nickel Plated Brass	
	Base	PBT	
	RoHS	Made to order	
Head Color	---		