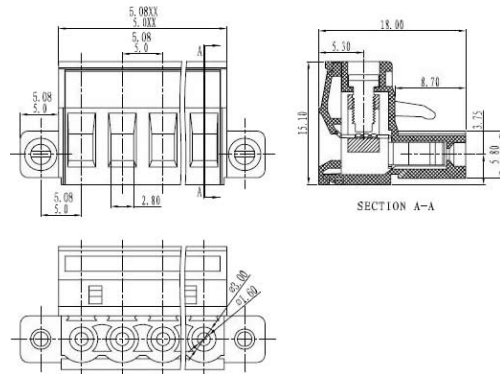


PLUGGABLE TERMINAL BLOCKS

ULO-TB21-2KM/5.0 Pitch: 5.0mm

ULO-TB27-2KM/5.08 Pitch: 5.08mm



Standard	UL	TUV
Rated voltage	300V	320V
Rated current	20A	20A
Wire range	28-12AWG	2.5mm ²
Withstanding voltage	AC2500V/1Min	
Torque	0.4Nm(3.5Lb-In.)	
Ambient temperature	-40°C~+115°C	
Strip length	7mm	
Pitch	5.0mm(.197") 5.08mm(.200")	
Poles	2P-22P	
Housing	PA66,UL94V-0	
Screws	M2.5,steel,Cr ³⁺ Zn plated	
Contact	Phosphor bronze	
Cage	Brass,Ni plated	

HOW TO ORDER:

ULO - TB_{XX} - XX...X - XX P - X X X 0A
 1 2 3 4 5 6 7 8

- 1 Company name. ULO 2 Model.
- 3 Material code. Any letters and (or) digits for factory material code.
- 4 Number of poles. Two digits from 02 to 24.
- 5 Colour of housing. One digit from 1 to 9.
 1. Grey; 2. Blue; 3. Black; 4. Green; 5. Orange; 6. Red; 7. Transparent; 8. Yellow; 9. White.
- 6 Screw head type. One digit 0 or 1. 0. Slot screw; 1. Cross screw.
- 7 Screw clamping type. One digit 0 or 1. 0. Screw down; 1. Screw up.
- 8 Brass cage. '0A' Normal brass cage product.