

## DETAILS

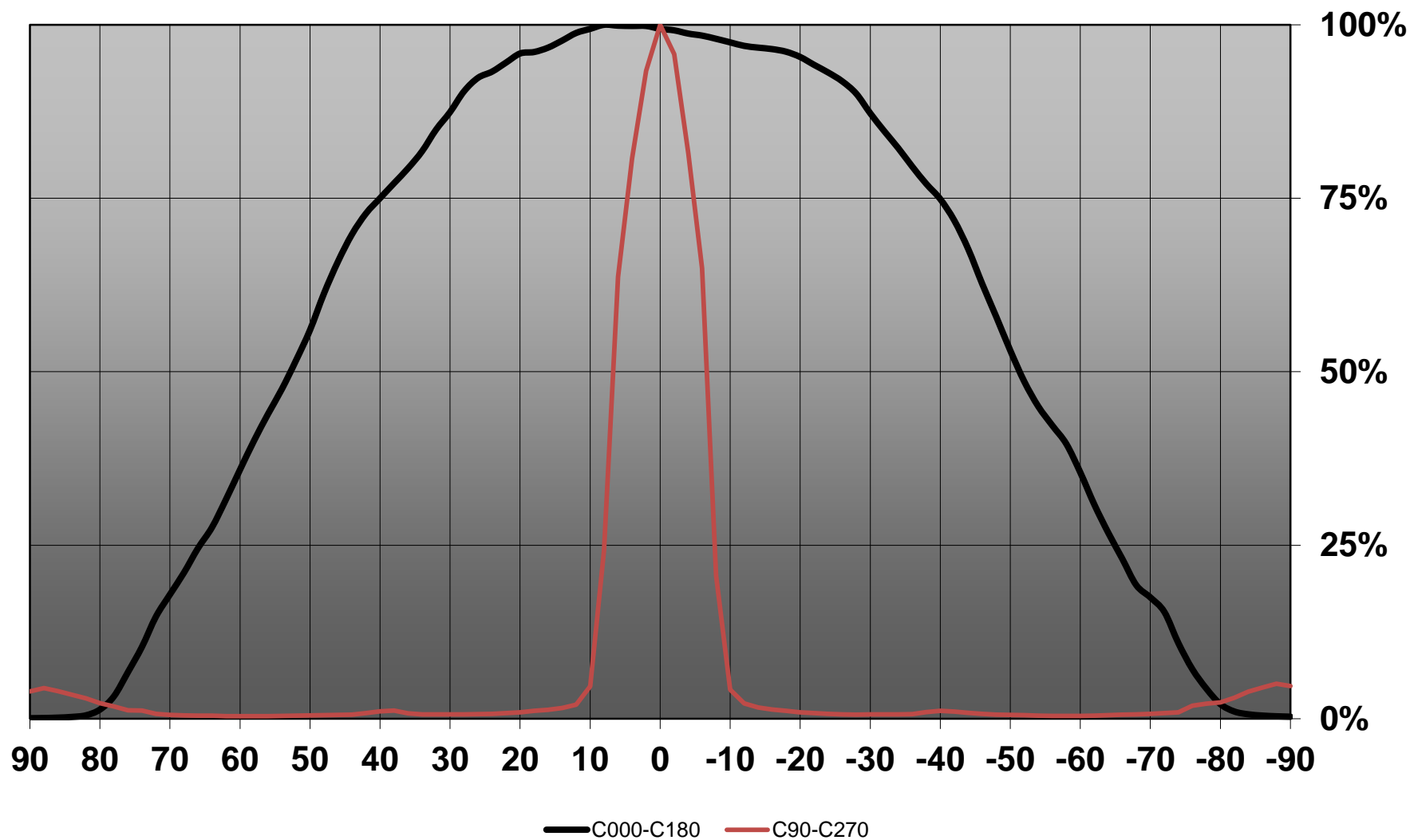
<b>Product Number</b>	C12868_FLARE-MAXI
<b>Family</b>	Flare
<b>Type</b>	Lens
<b>Color</b>	clear
<b>Diameter</b>	33,9 + 33,3 mm
<b>Height</b>	16,7 mm
<b>Style</b>	rectang
<b>Optic Material</b>	PMMA
<b>Holder Material</b>	
<b>Fastening</b>	glue, pin
<b>Status</b>	production ready
<b>ROHS Compliant</b>	Yes
<b>Date Updated</b>	25/09/2015



## OPTICAL PROPERTIES

LED	Viewing Angle	Light Beam	Efficiency	cd/lm	Connector
XM-L	96+15 deg	REC-class	94 %	2.100	-
XP-G	105+11 deg	REC-class	94 %	2.500	-
XT-E	96+10 deg	REC-class	94 %	2.500	-
XM-L2	95+14 deg	REC-class	94 %	2.300	-
XP-G2	96+10 deg	REC-class	94 %	3.100	-
XP-L	115+13 deg	REC-class	94 %	2.110	-
XP-L2	100+14 deg	REC-class	94 %	1.900	-
H35C1 (LEMWA33)	99+10 deg	REC-class	94 %	3.000	-
LUXEON M	100+23 deg	REC-class	94 %	1.400	-
LUXEON Rebel ES	91+10 deg	REC-class	94 %	2.800	-
LUXEON T	96+10 deg	REC-class	92 %	2.900	-
LUXEON H50-2	sim: 9.5+64	REC-class	sim: 92 %	sim: 3.600	-
LUXEON TX	96+9 deg	REC-class	94 %	3.180	-
NVSxx19B/NVSxx19C	98+11 deg	REC-class	94 %	2.400	-
NCSxx19B	98+9 deg	REC-class	94 %	3.500	-
NWSx229A	122+13 deg	REC-class	94 %	2.000	-
NV4x144A	108+19 deg	REC-class	94 %	1.400	-
Oslon Square PC	98+13 deg	REC-class	94 %	2.500	-
Duris P10	sim: 84+18	REC-class	sim: 93 %	sim: 1.800	-
LH351Z	95+9.0 deg	REC-class	94 %	3.500	-

Relative intensity of C12868\_FLARE-MAXI\_(XM-L2)



D

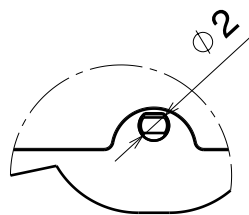
C

B

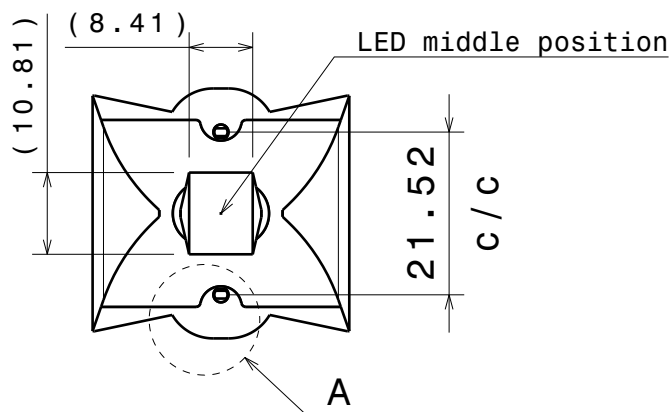
A

4

4

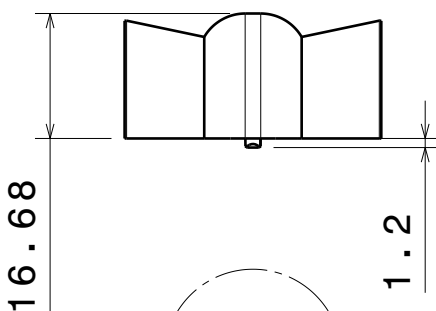
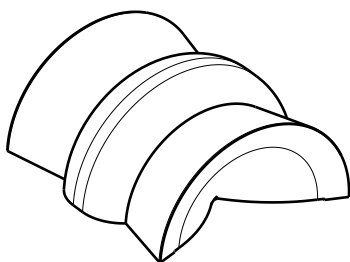


Detail A  
Scale: 2:1



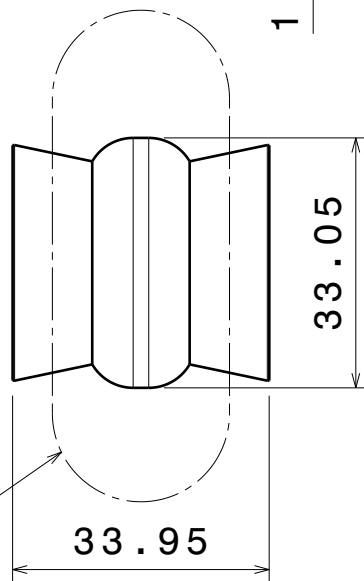
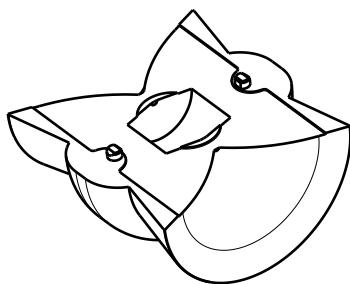
3

3



2

2



Light pattern direction

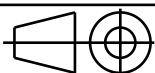
INDEX	PART NO	DESCRIPTION	MATERIAL	COLOUR
1	C12868	FLARE-MAXI	PMMA	

Tolerances if not otherwise shown  
According to DIN ISO 2768-1  
Linear measures:  
up to 30mm class M, otherwise class C  
According to DIN ISO 2768-2  
Form and position: class L

**LEDiL**

Ledil Oy  
Salorankatu 10  
FIN 24240 SALO  
Finland

THIRD ANGLE PROJECTION:



DRAWING TITLE

**C12868\_FLARE-MAXI**

This drawing is the property of LEDiL Oy. It may not be reproduced, copied or communicated without a written agreement with LEDiL Oy. LEDiL Oy reserves the right to without prior notification make changes and improvements to its products.

SIZE PART NUMBER

**A4**

**C12868**

SCALE 1:1 WEIGHT 9,84 g SHEET 1/1

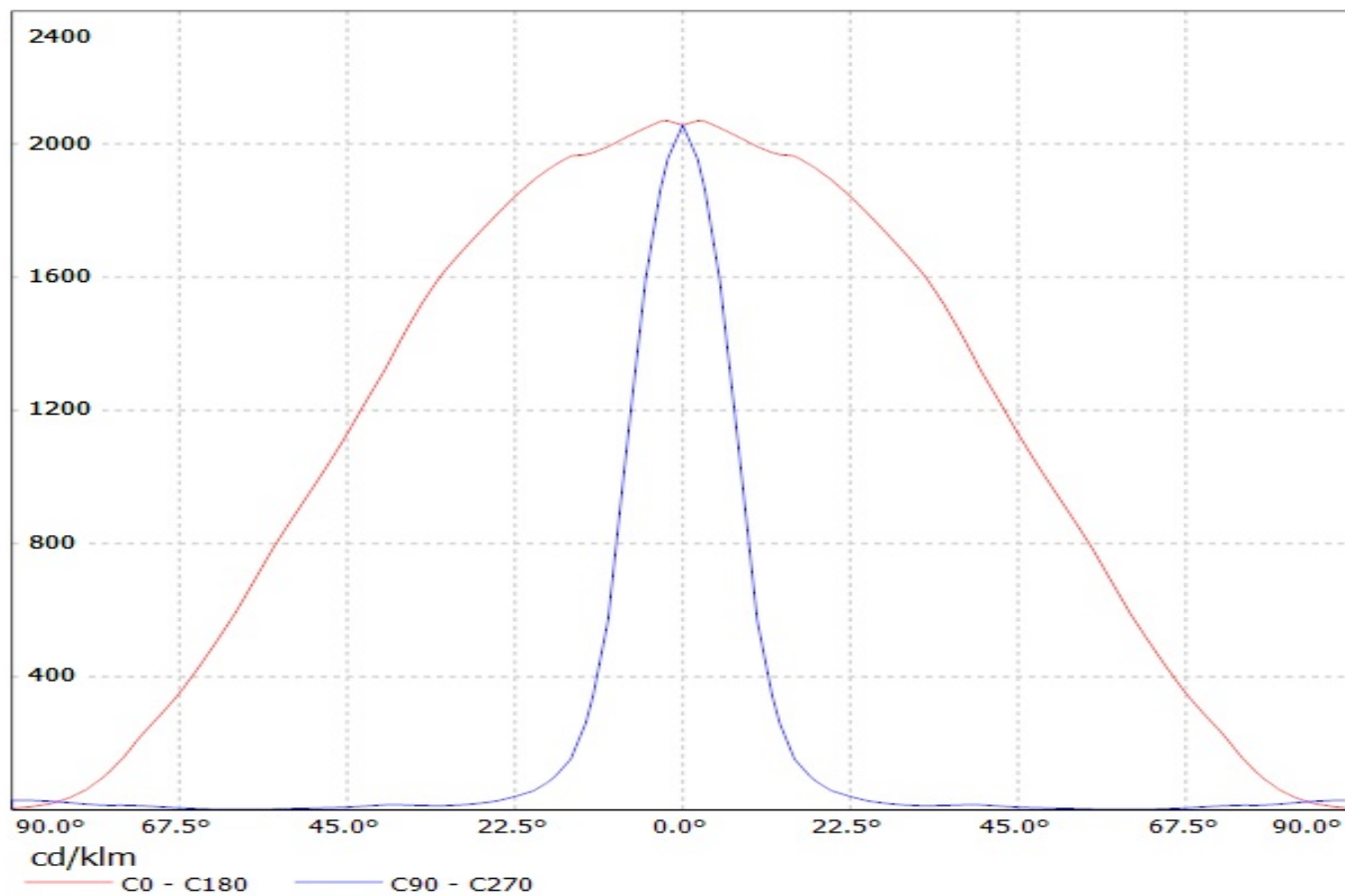
D

A

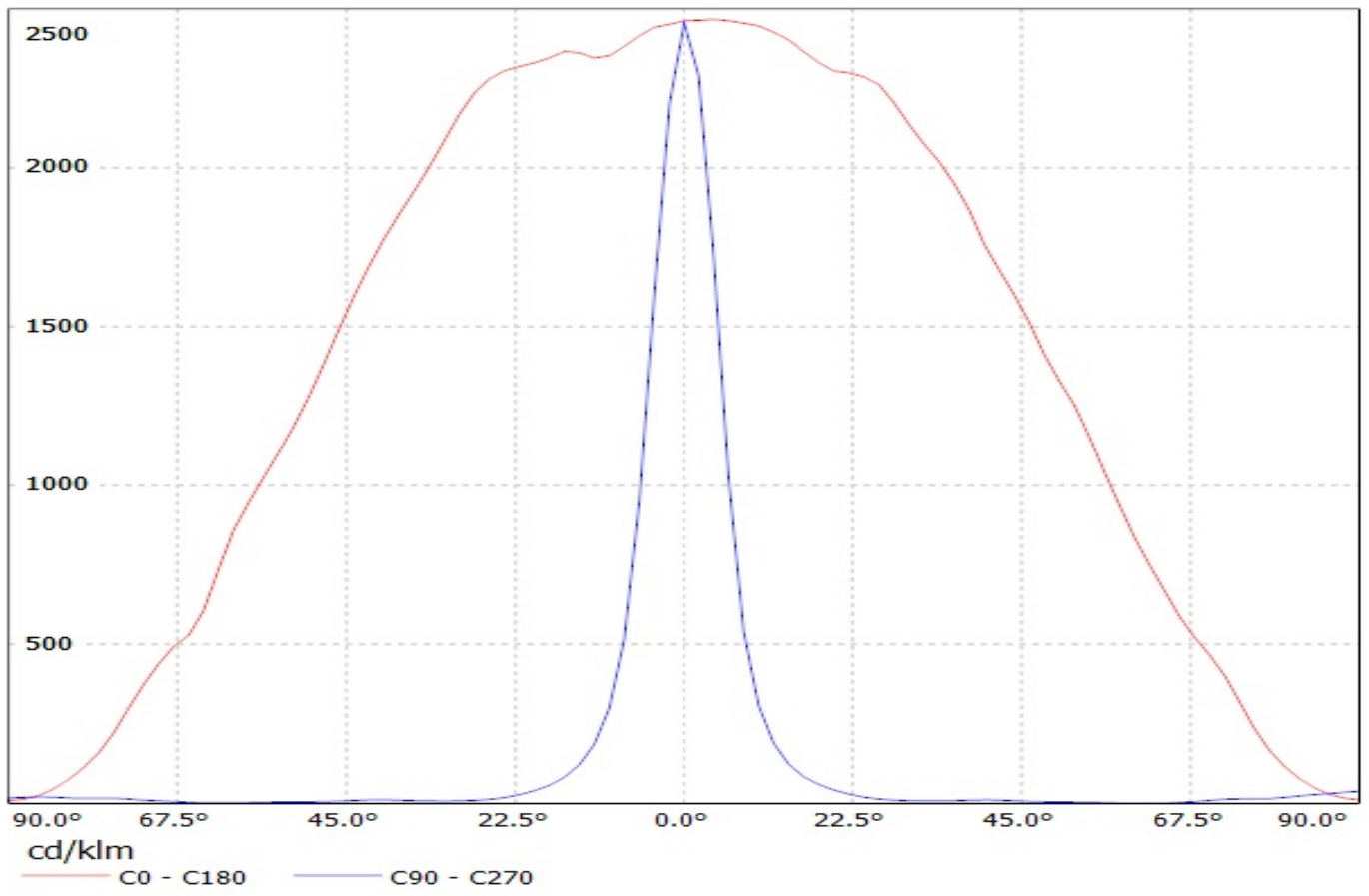
1

1

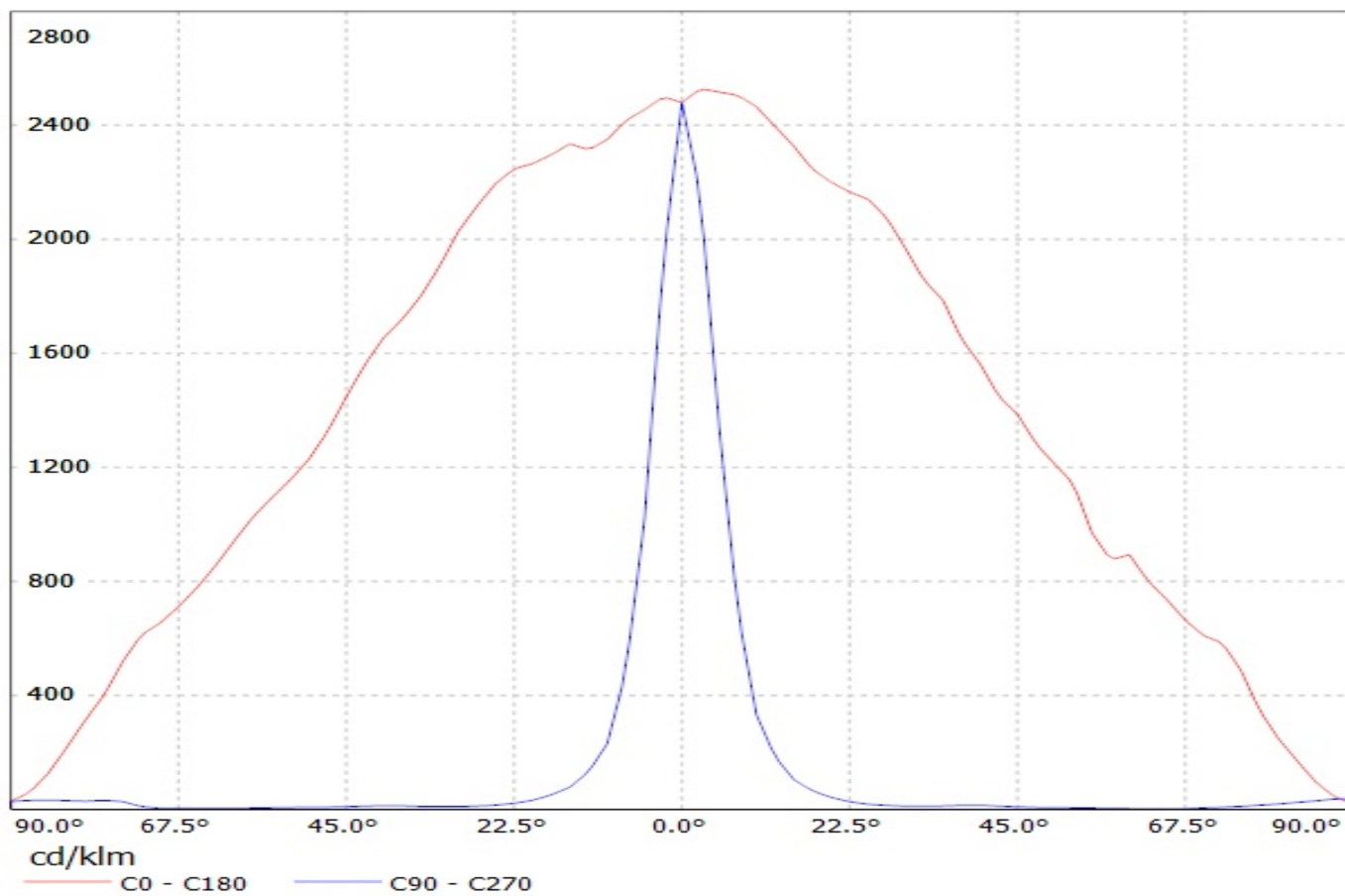
Luminaire: Ledil Oy C12868\_FLARE-MAXI (Cree XM-L 89lm @ 250mA) Efficiency=94%  
Lamps: 1 x Cree XM-L 89lm @ 250mA



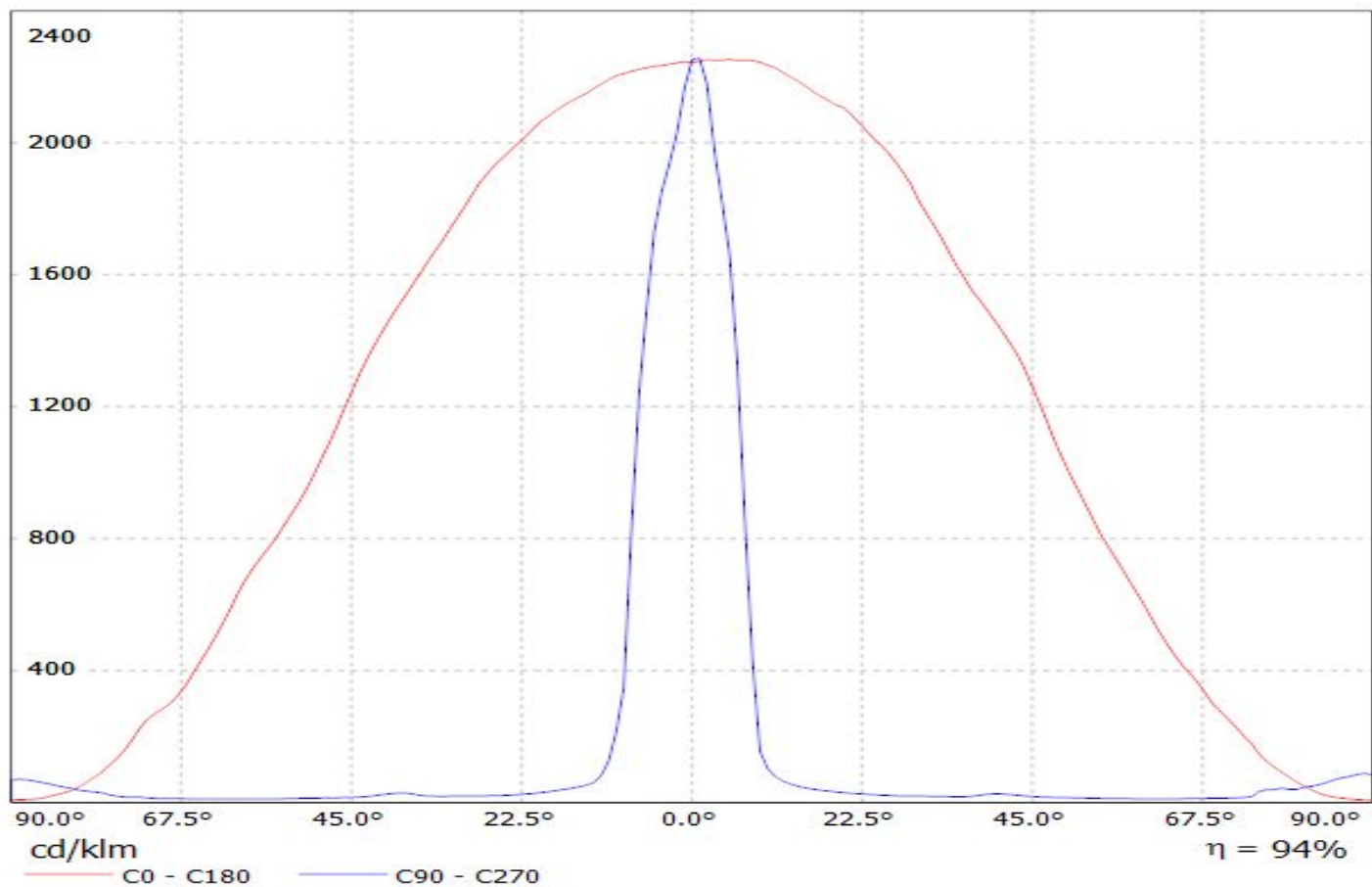
Luminaire: Ledil Oy C12868\_FLARE-MAXI (Cree XP-G 71lm @ 250mA) Efficiency=94%  
Lamps: 1 x Cree XP-G 71lm @ 250mA



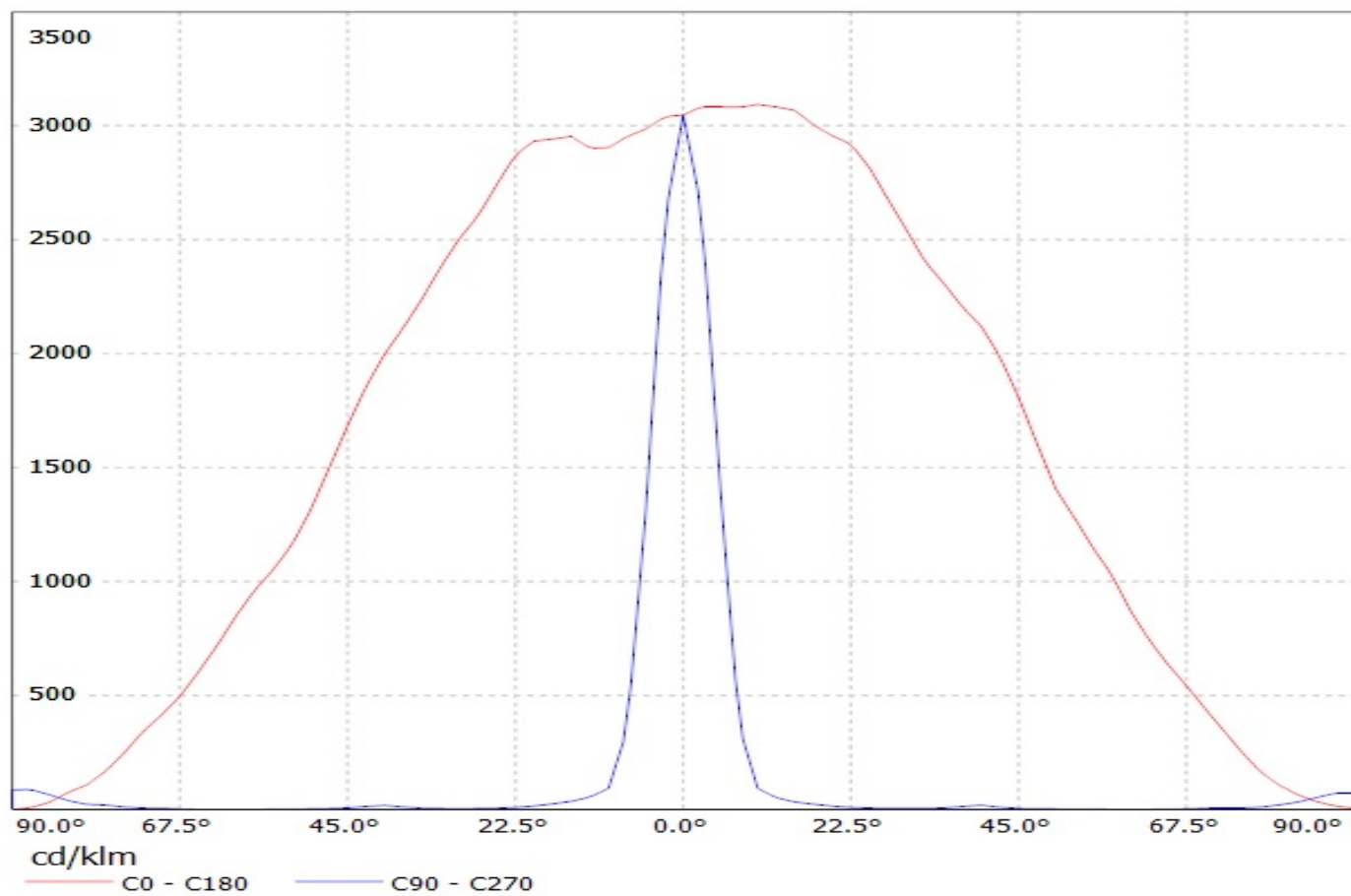
Luminaire: Ledil Oy C12868\_FLARE-MAXI (Cree XT-E 94lm @ 250mA) Efficiency=94%  
Lamps: 1 x Cree XT-E 94lm @ 250mA



Luminaire: LEDiL Oy C12868\_FLARE-MAXI\_(XM-L2) Eff.94.0%  
Lamps: 1 x CREE\_XM-L2\_(XMLBWT-0-7B4-T30-0L-001)  
\_96.421lm@250mA\_CCT3233K\_P=0.735556W\_I=249.9mA

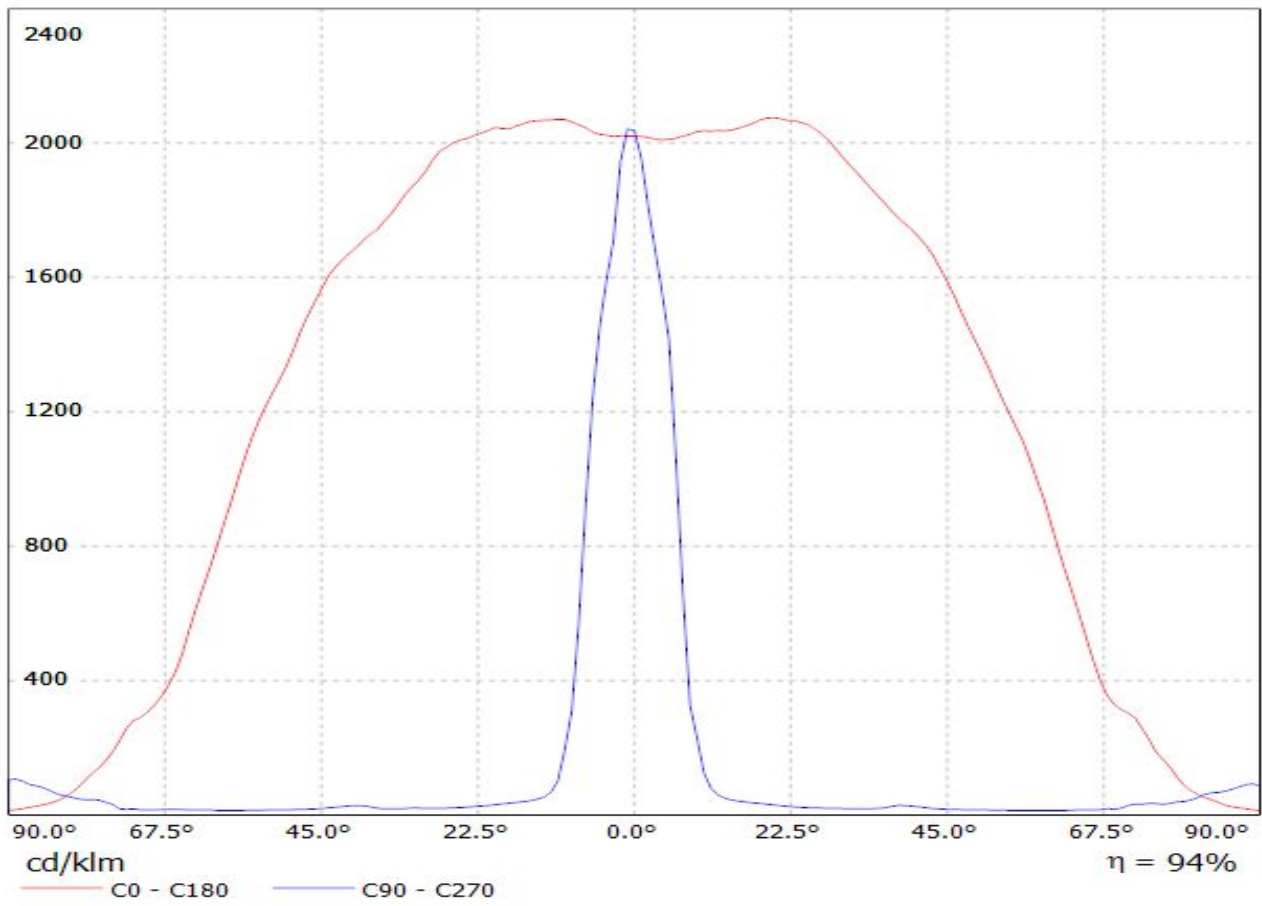


Luminaire: Ledil Oy C12868\_FLARE-MAXI (Cree XP-G2 98lm @ 250mA) Efficiency=94%  
Lamps: 1 x Cree XP-G2 98lm @ 250mA CCT=6596K P=0,75W I=250mA



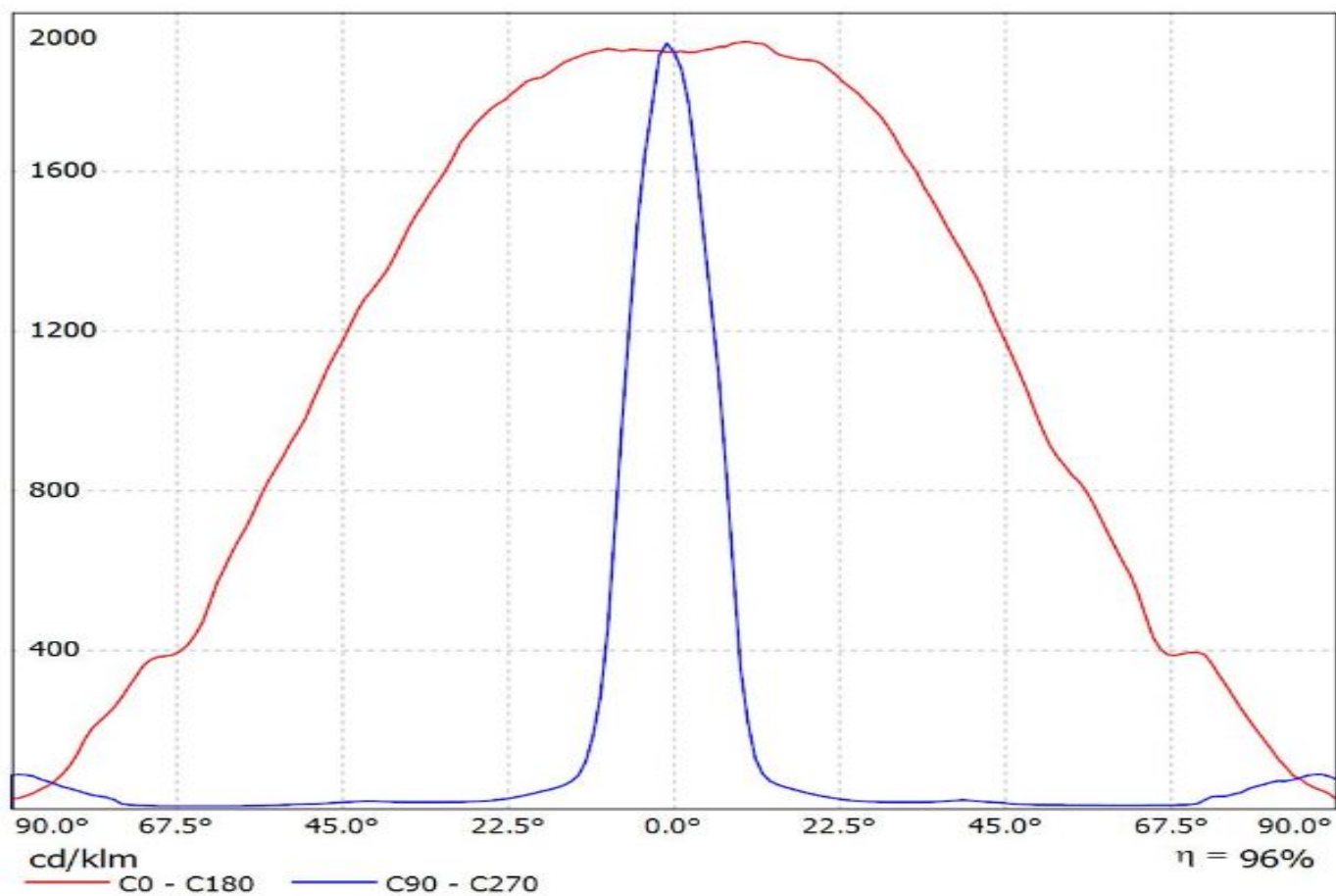


Luminaire: LEDiL Oy C12868\_FLARE-MAXI (XP-L)  
Lamps: 1 x Cree\_XP-L\_130lm@250mA\_P=0.73723W\_I=249.9mA

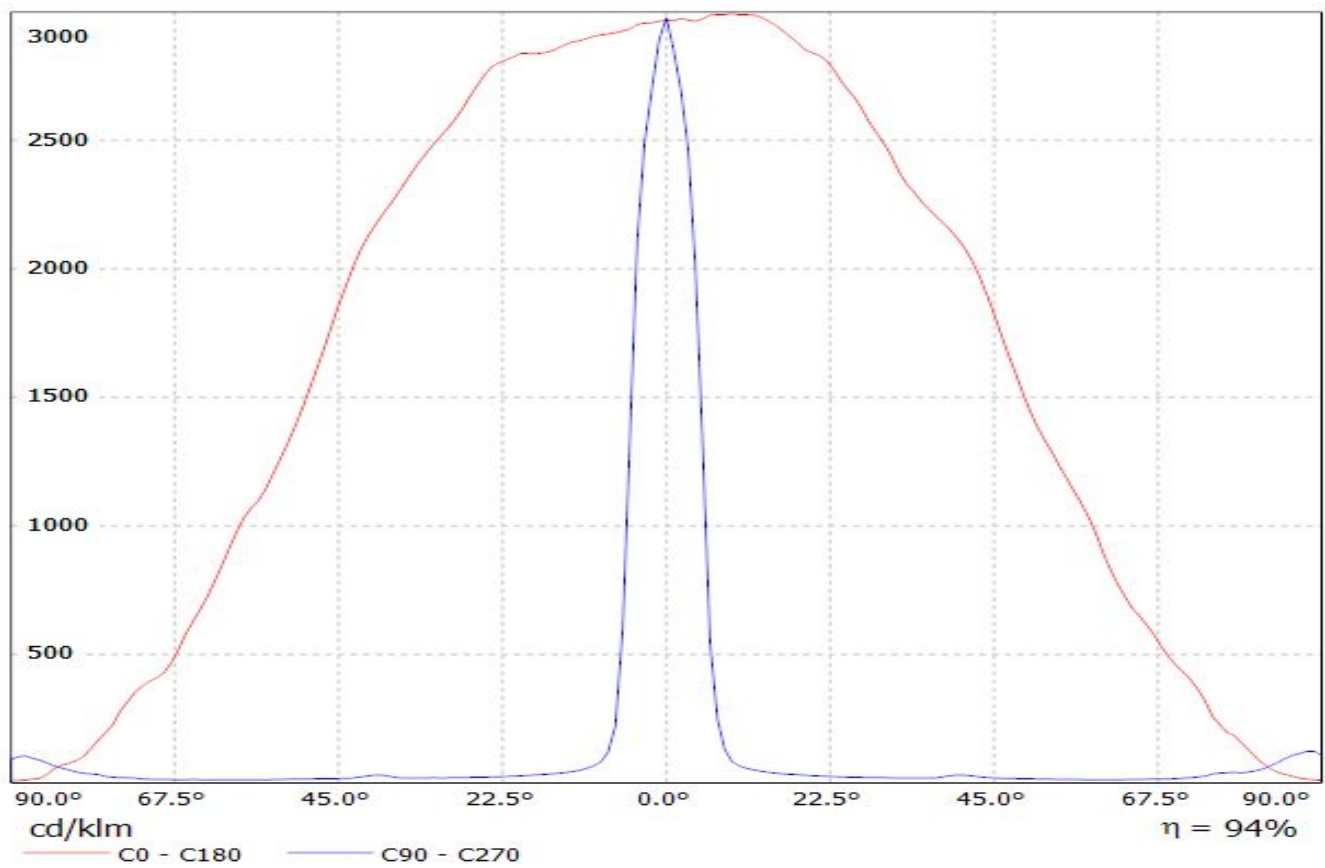


Luminaire: Ledil C12868\_FLARE-MAXI\_(XP-L2)

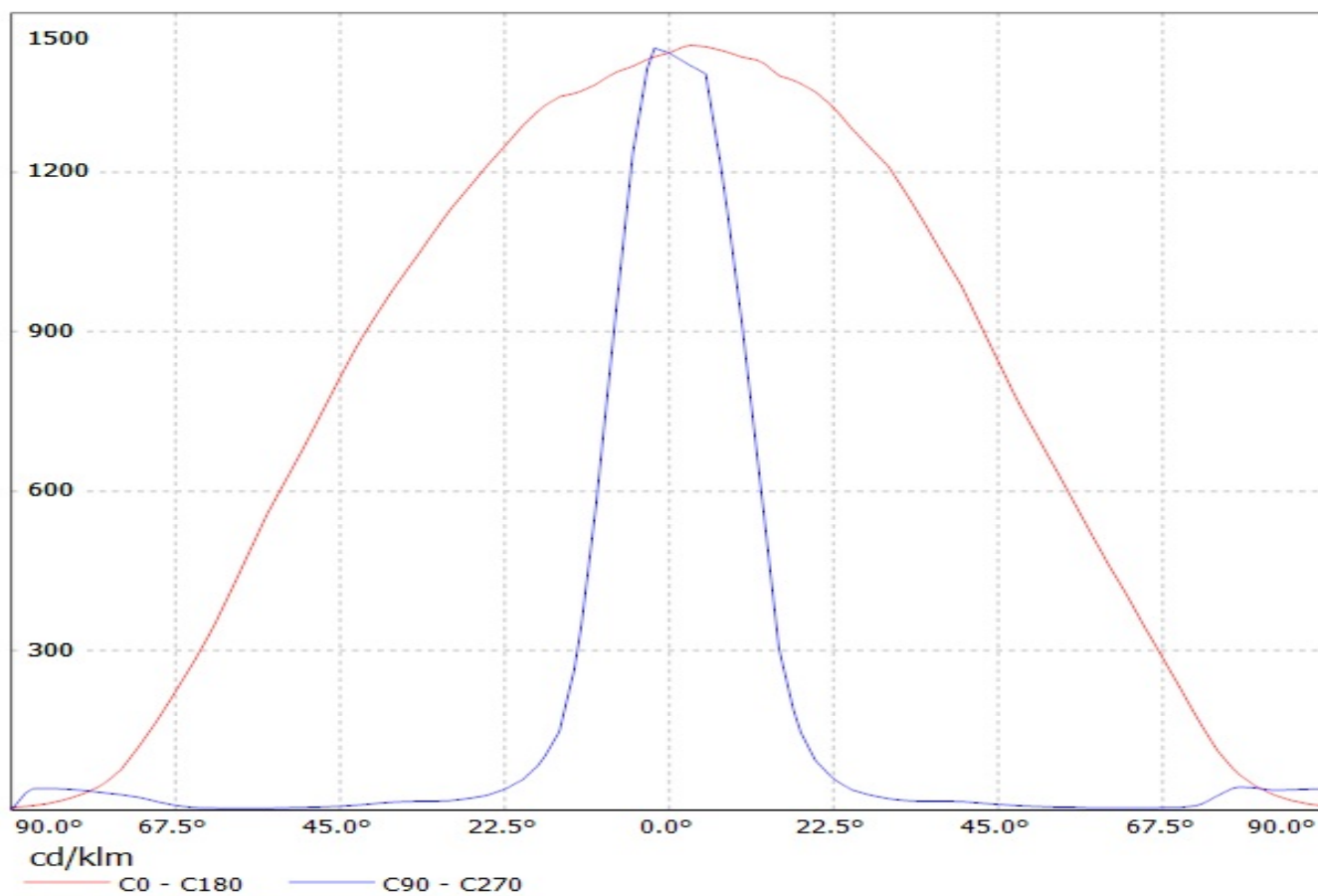
Lamps: 1 x Cree\_XP-L2\_(XPLWT-00-0000-000HU630G)\_115.505lm@250mA\_P=0.72165W\_I=0.25A



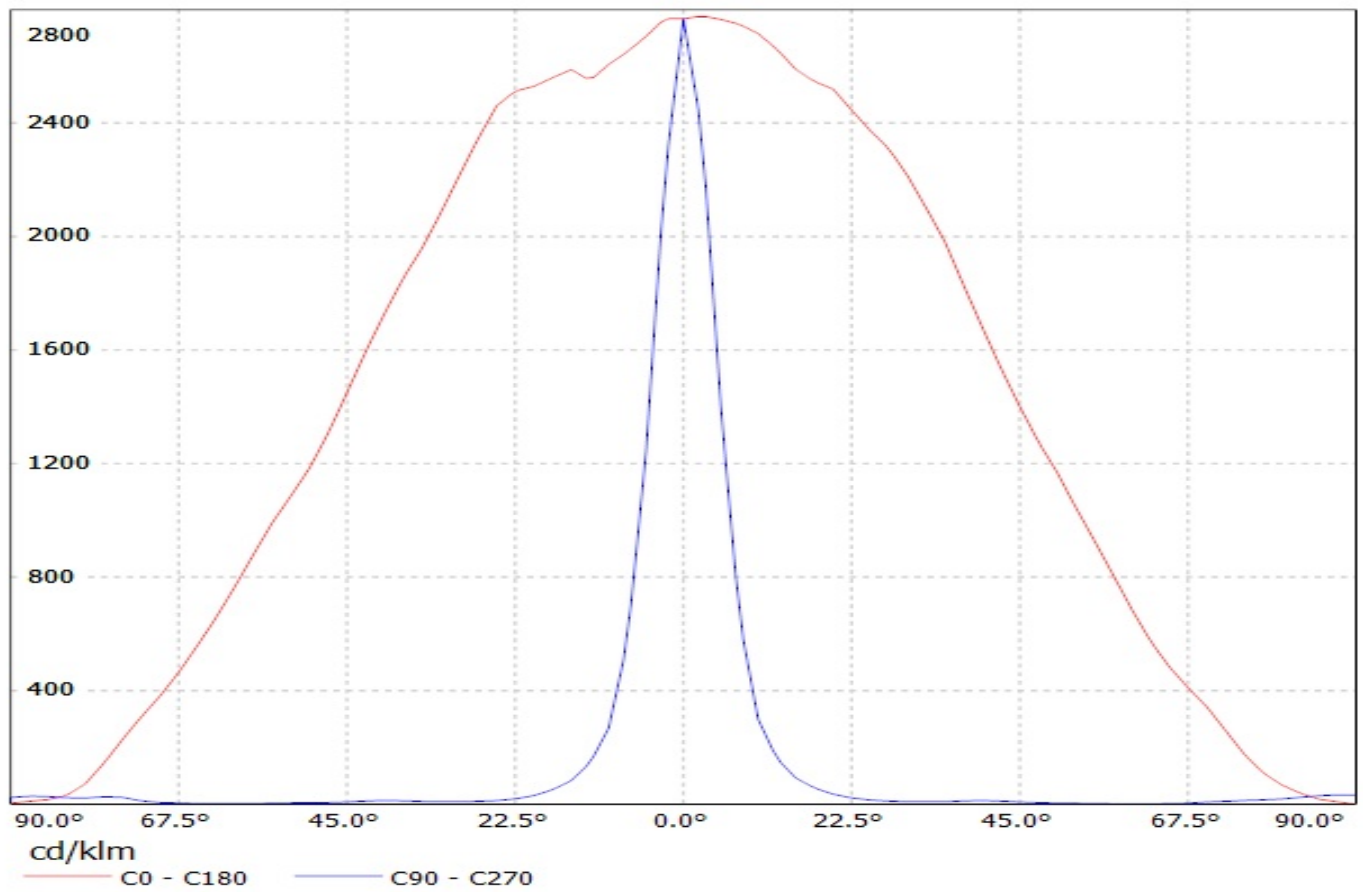
Luminaire: LEDiL Oy C12868\_FLARE-MAXI\_(LG-3535-CERAMIC-GEN2) Eff. 94%  
Lamps: 1 x LG-3535-CERAMIC-GEN2\_118lm@250mA\_P=0.754973W\_CCT=6235K\_I=249.9mA



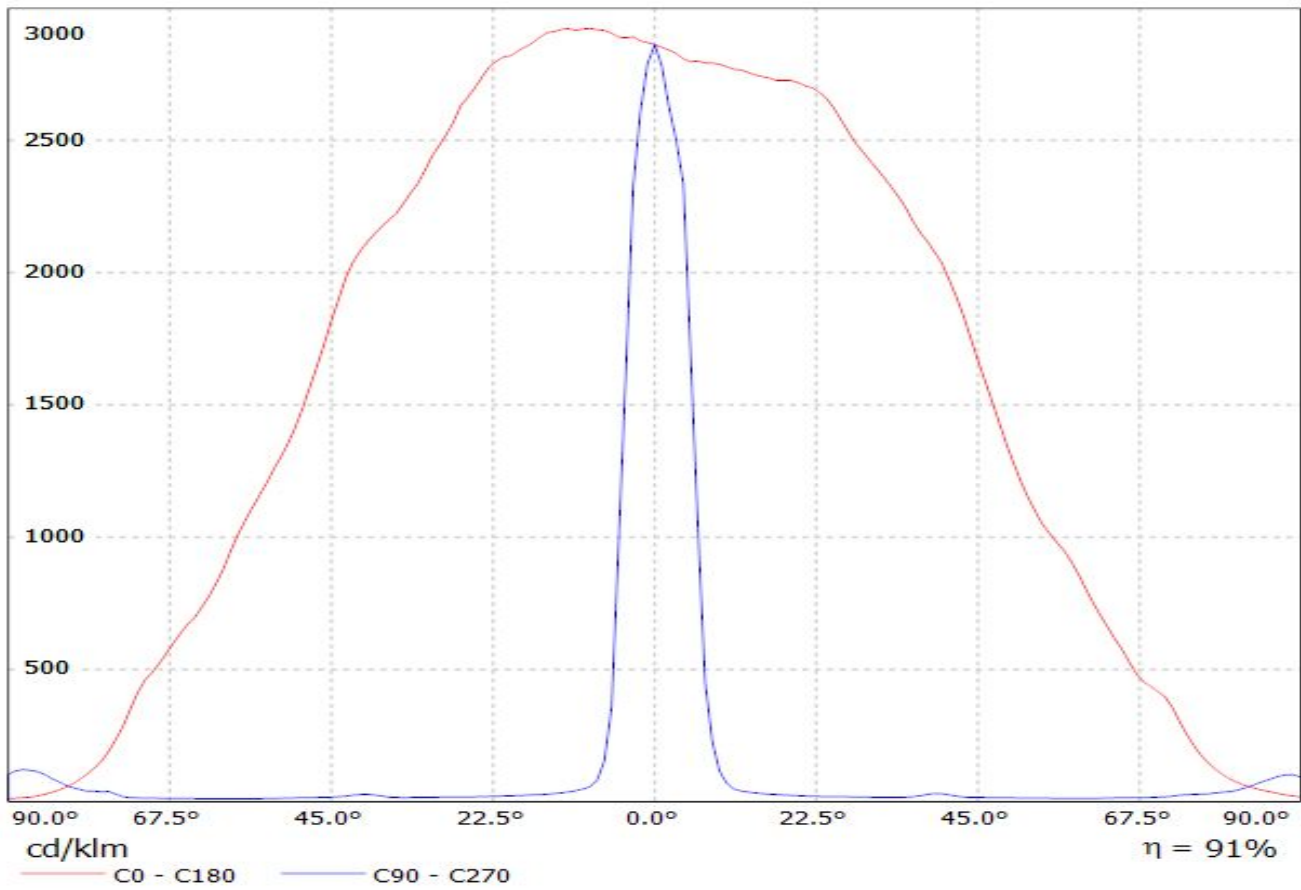
Luminaire: Ledil Oy C12868\_FLARE-MAXI (Luxeon M 361lm @ 250mA) Efficiency=94%  
Lamps: 1 x Luxeon M 361lm @ 250mA



Luminaire: Ledil Oy C12868\_FLARE-MAXI (Luxeon Rebel ES 89lm @ 250mA) Efficiency=94%  
Lamps: 1 x Luxeon Rebel ES 89lm @ 250mA

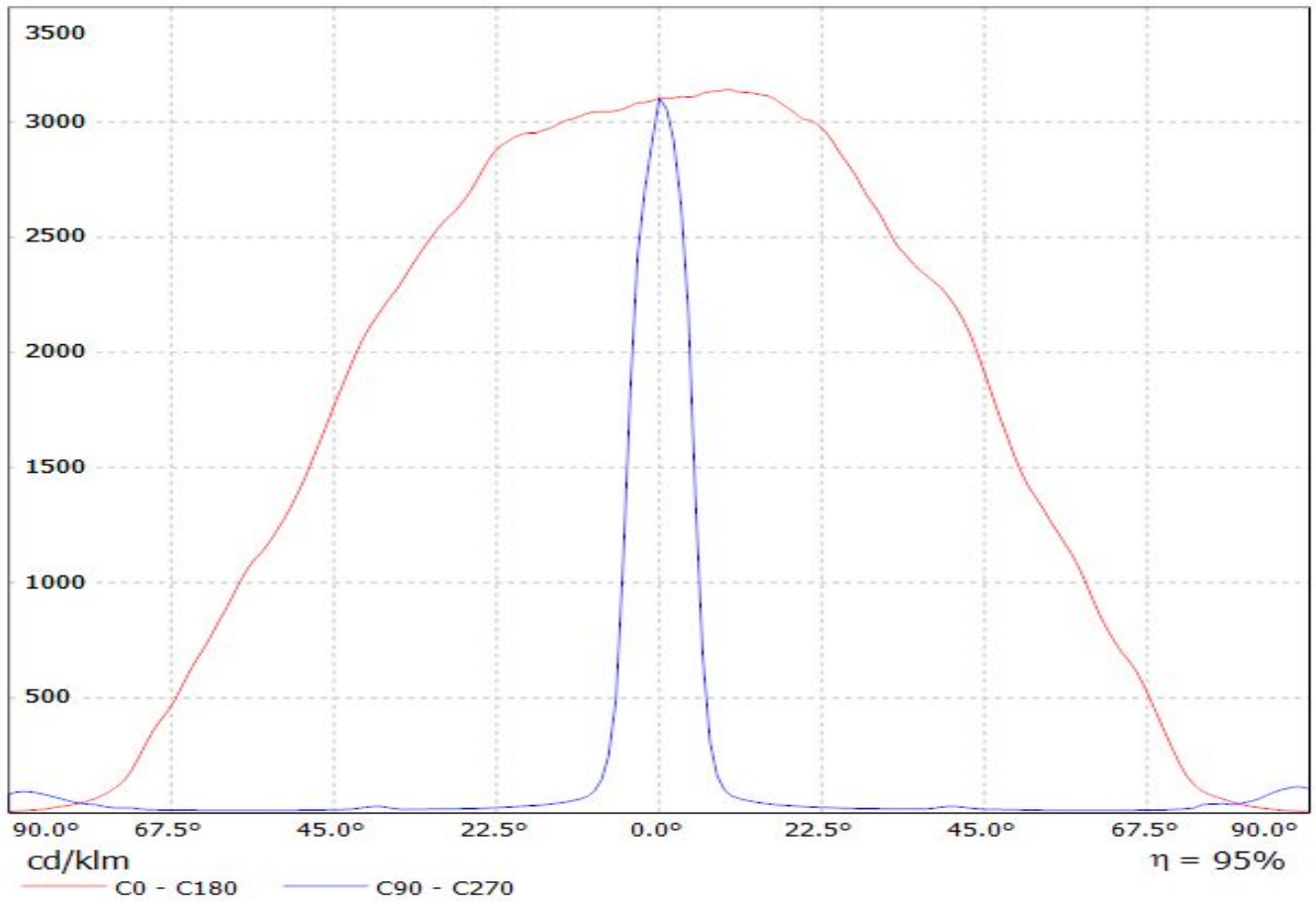


Luminaire: LEDiL Oy C12868\_FLARE-MAXI\_(LUXEON\_T)\_3 Eff.91.5%  
Lamps: 1 x LUXEON T (74lm@250mA)

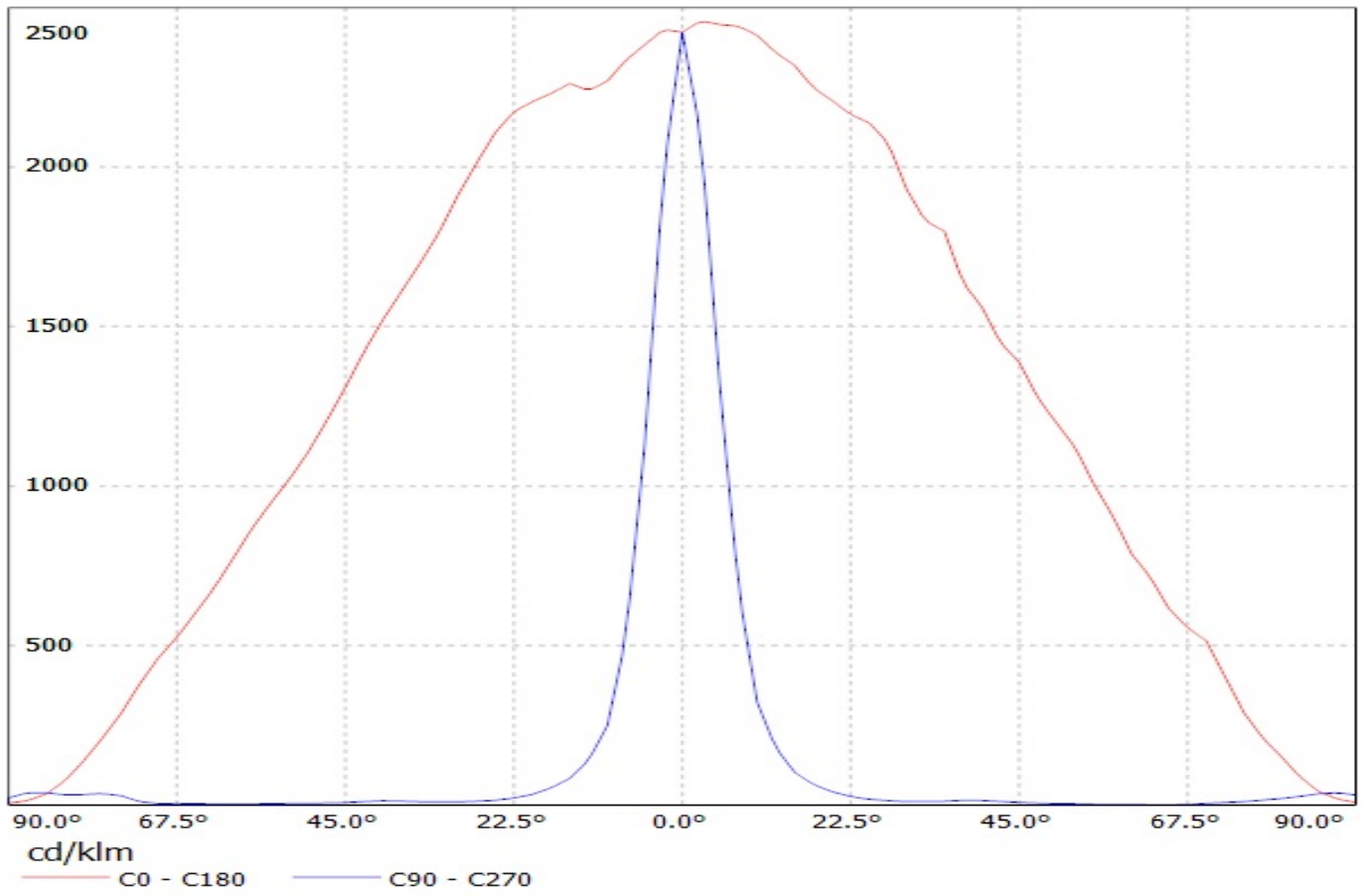


Luminaire: LEDiL Oy C12868\_FLARE-MAXI (Luxeon\_TX)

Lamps: 1 x Luxeon\_TX\_(L1T2-3585)\_80.1801lm@250mA\_CCT=3500K\_P=0.731482W\_I=249.9mA

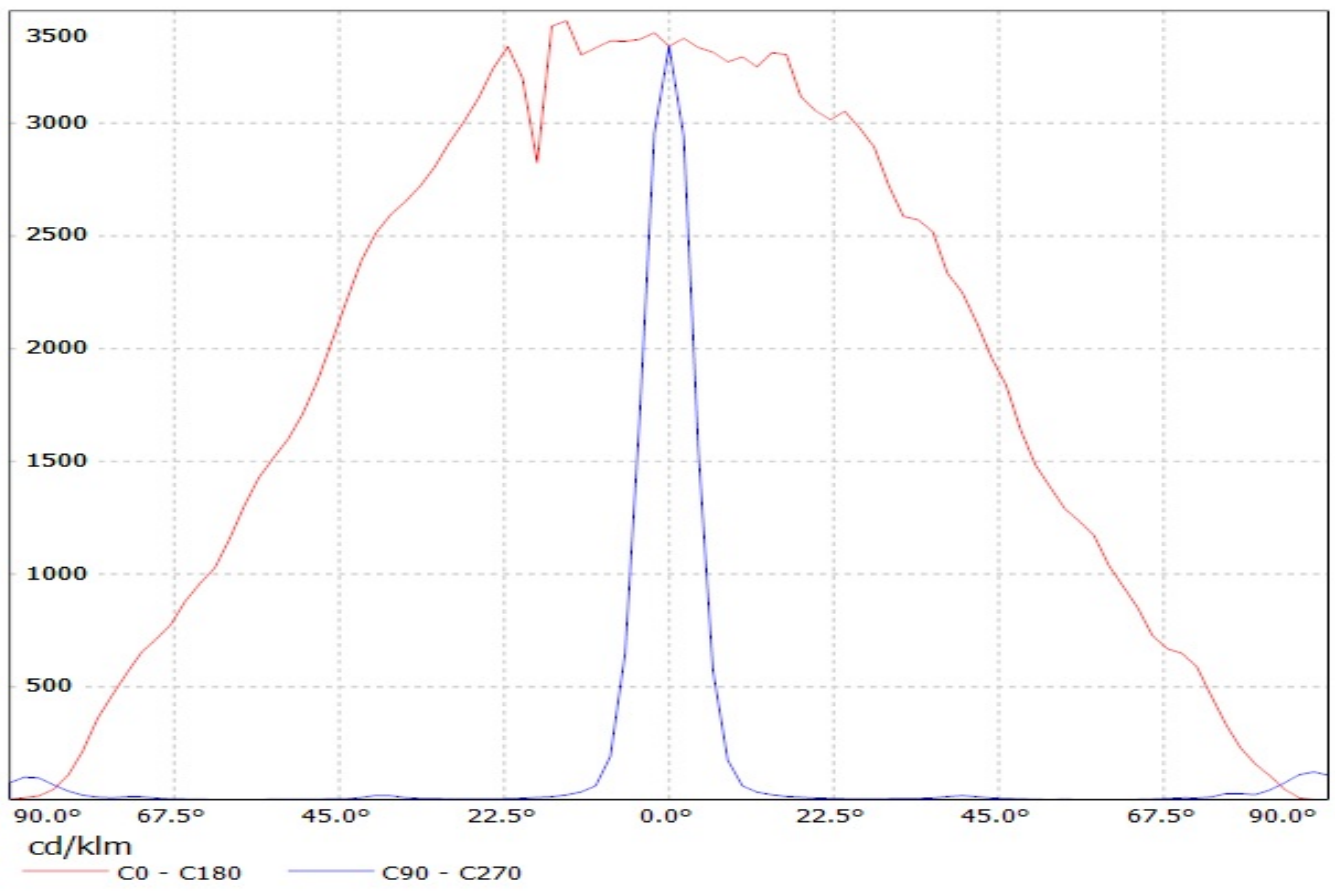


Luminaire: Ledil Oy C12868\_FLARE-MAXI (Nichia 219B 109lm @ 250mA) Efficiency=94%  
Lamps: 1 x Nichia 219B 109lm @ 250mA

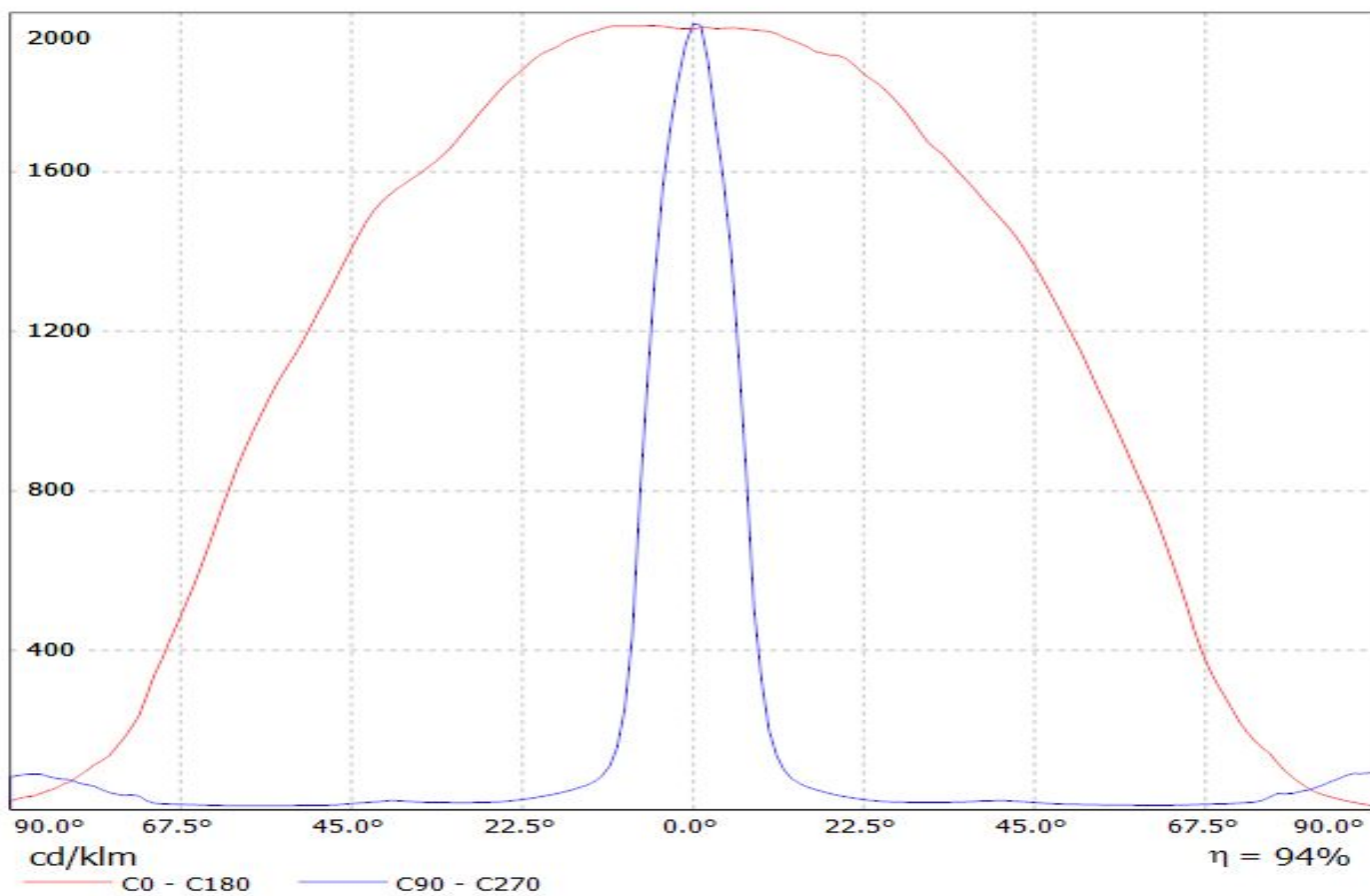




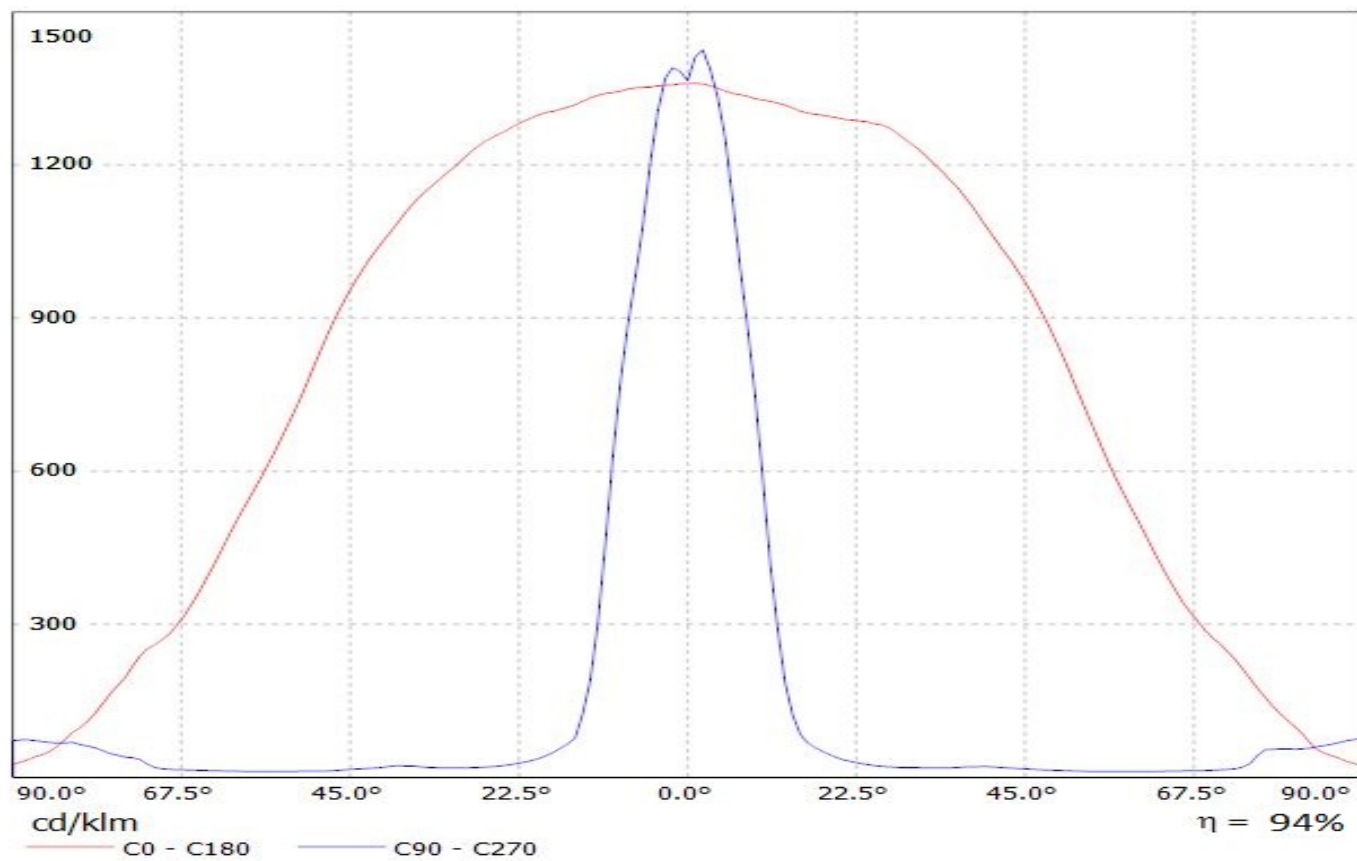
Luminaire: Ledil Oy C12868\_FLARE-MAXI\_(NCSxx19B) Efficiency=94%  
Lamps: 1 x Nichia NCSxx19B (NCSL119BE) 88lm @ 250mA CCT=3000K P=0.8W I=250mA



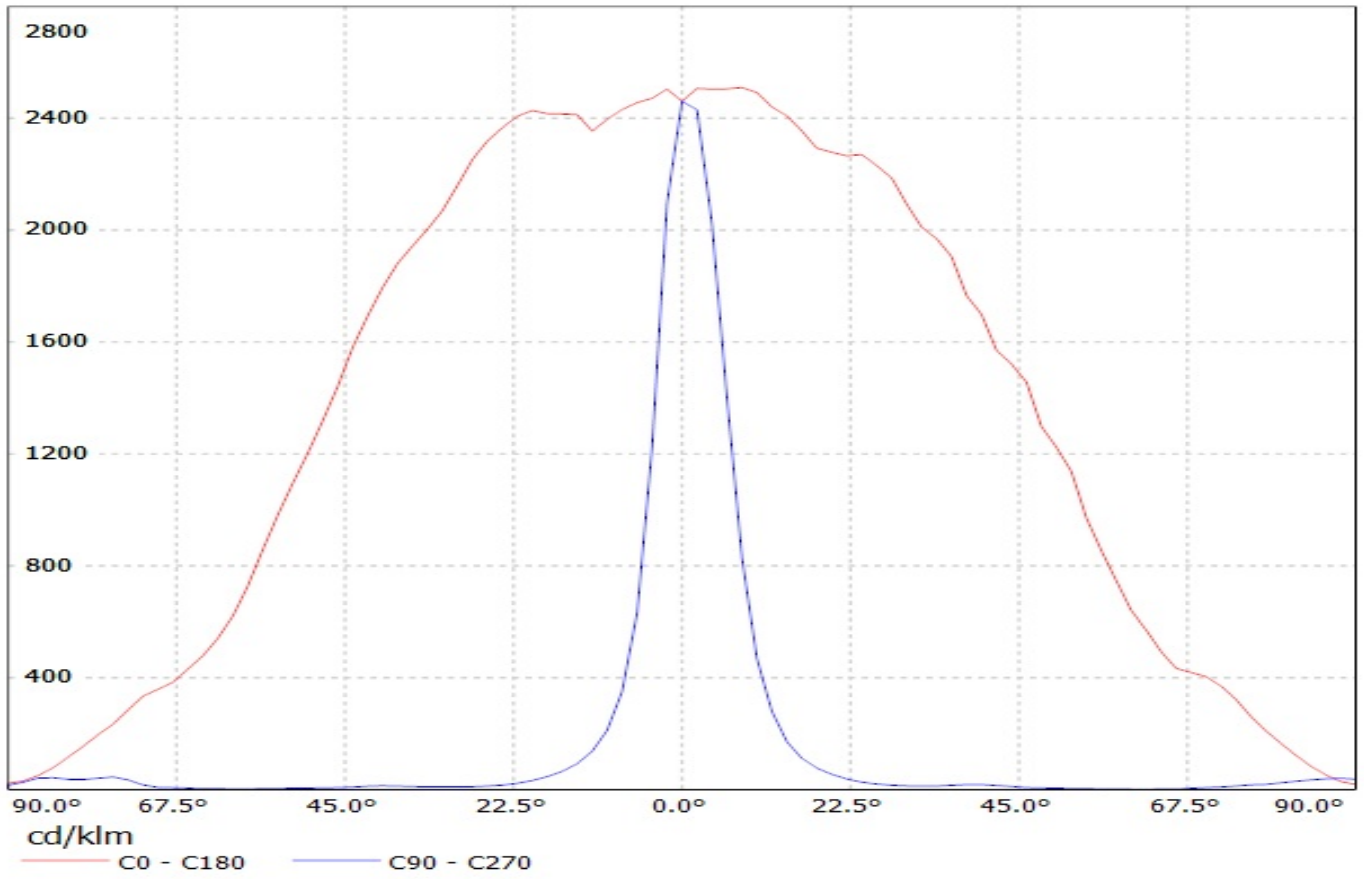
Luminaire: LEDiL Oy C12868\_FLARE-MAXI\_(NWSL229AE)  
Lamps: 1 x Nichia\_NWSL229AE\_120.54lm@250mA\_P=0.7128W\_I=0.250A



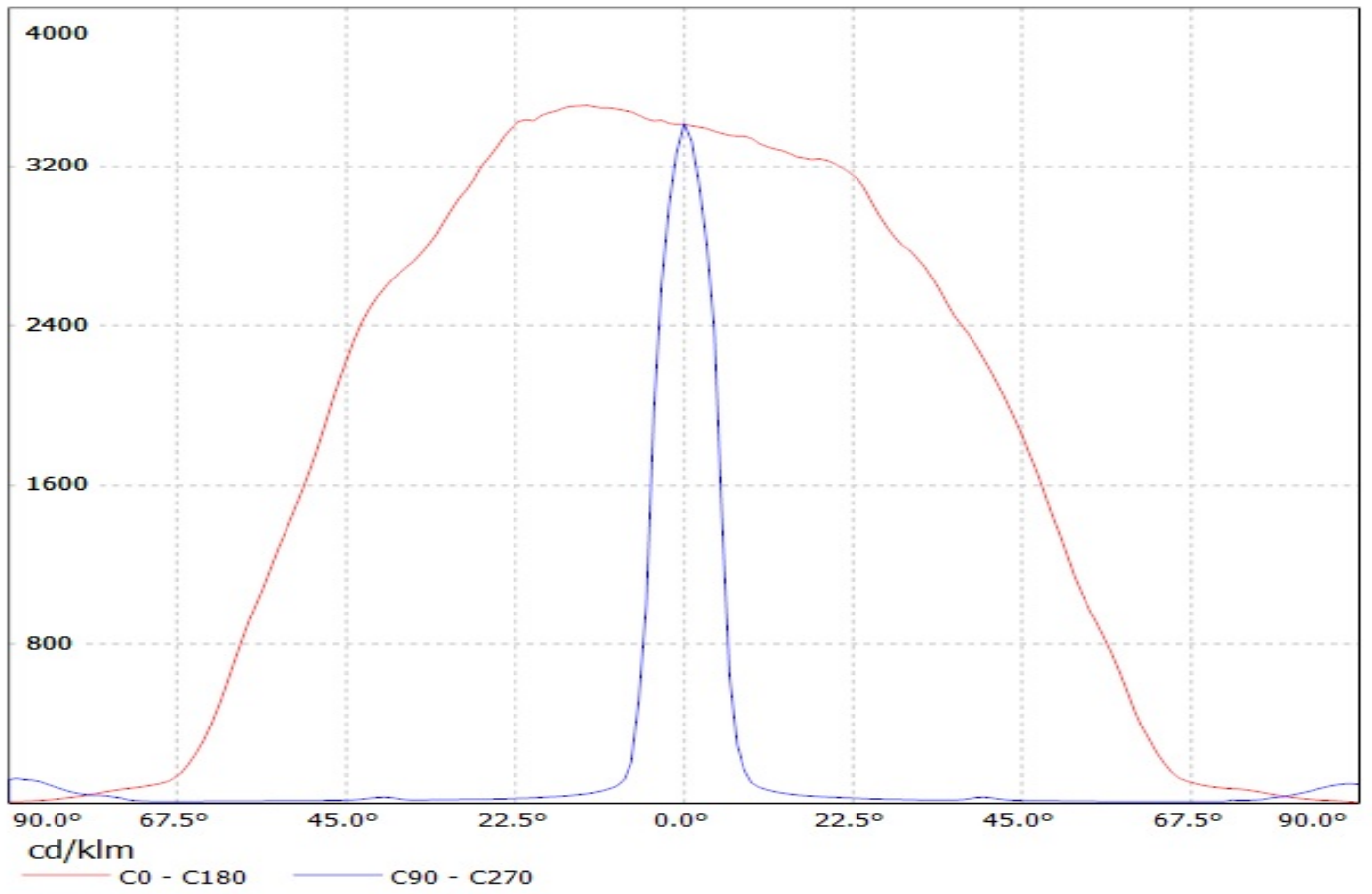
Luminaire: LEDiL Oy C12868\_FLARE-MAXI\_(Nichia\_NV4x144A)  
Lamps: 1 x Nichia\_NV4x144A\_478.709lm@250mA\_P=2.8097W\_I=0.250A



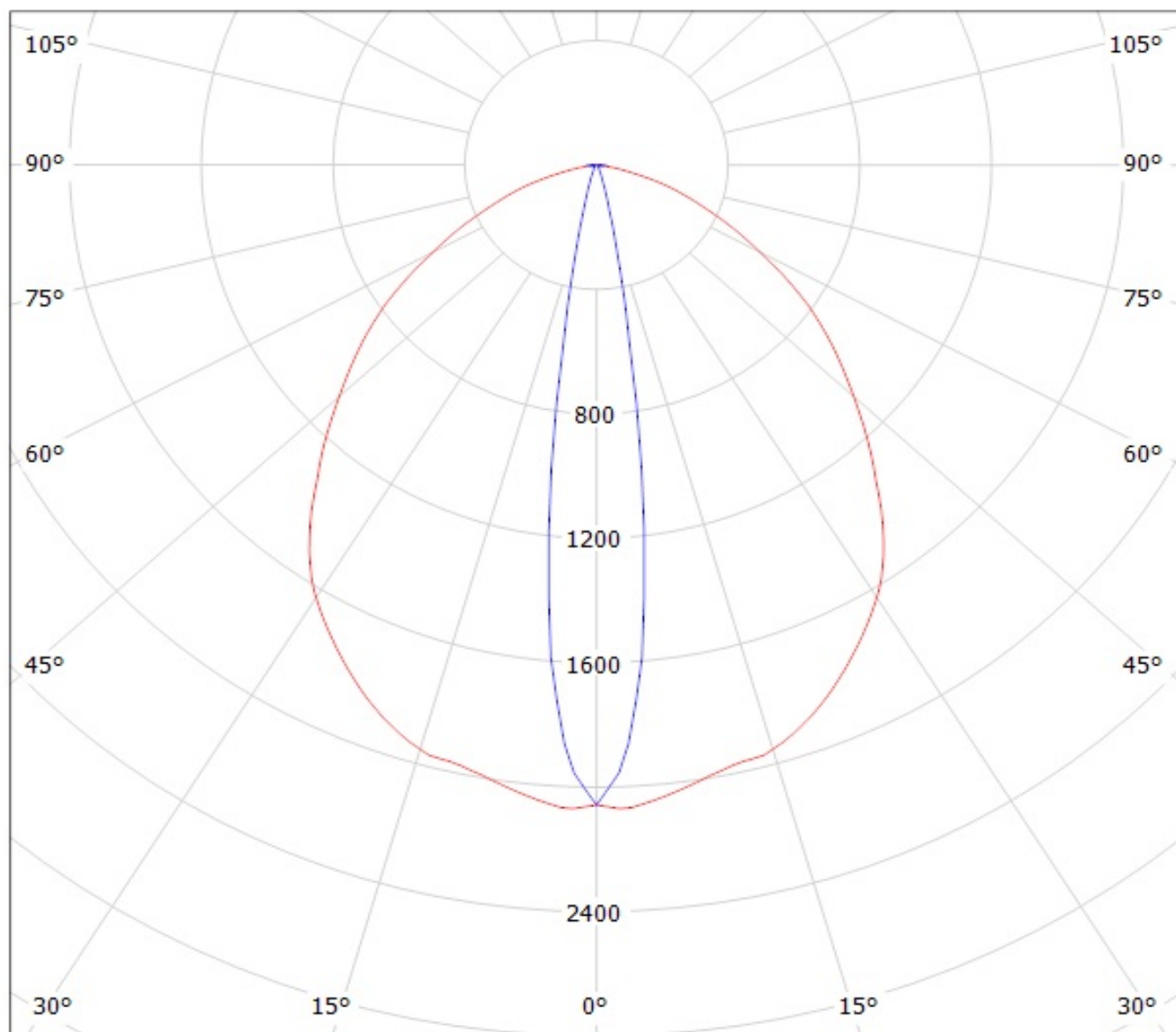
Luminaire: Ledil Oy C12868\_FLARE-MAXI (Osram Square PC 88lm @ 250mA) Efficiency=94%  
Lamps: 1 x Osram Square PC 88lm @ 250mA



Luminaire: LEDiL Oy C12868\_FLARE-MAXI\_(LH351Z) Eff.93.6%  
Lamps: 1 x SAMSUNG\_LH351Z\_90.8111lm@250mA\_P=0.748076W\_I=249.9mA



Luminaire: Ledil Oy C12868\_FLARE-MAXI (Cree XM-L 89lm @ 250mA) Efficiency=94%  
Lamps: 1 x Cree XM-L 89lm @ 250mA

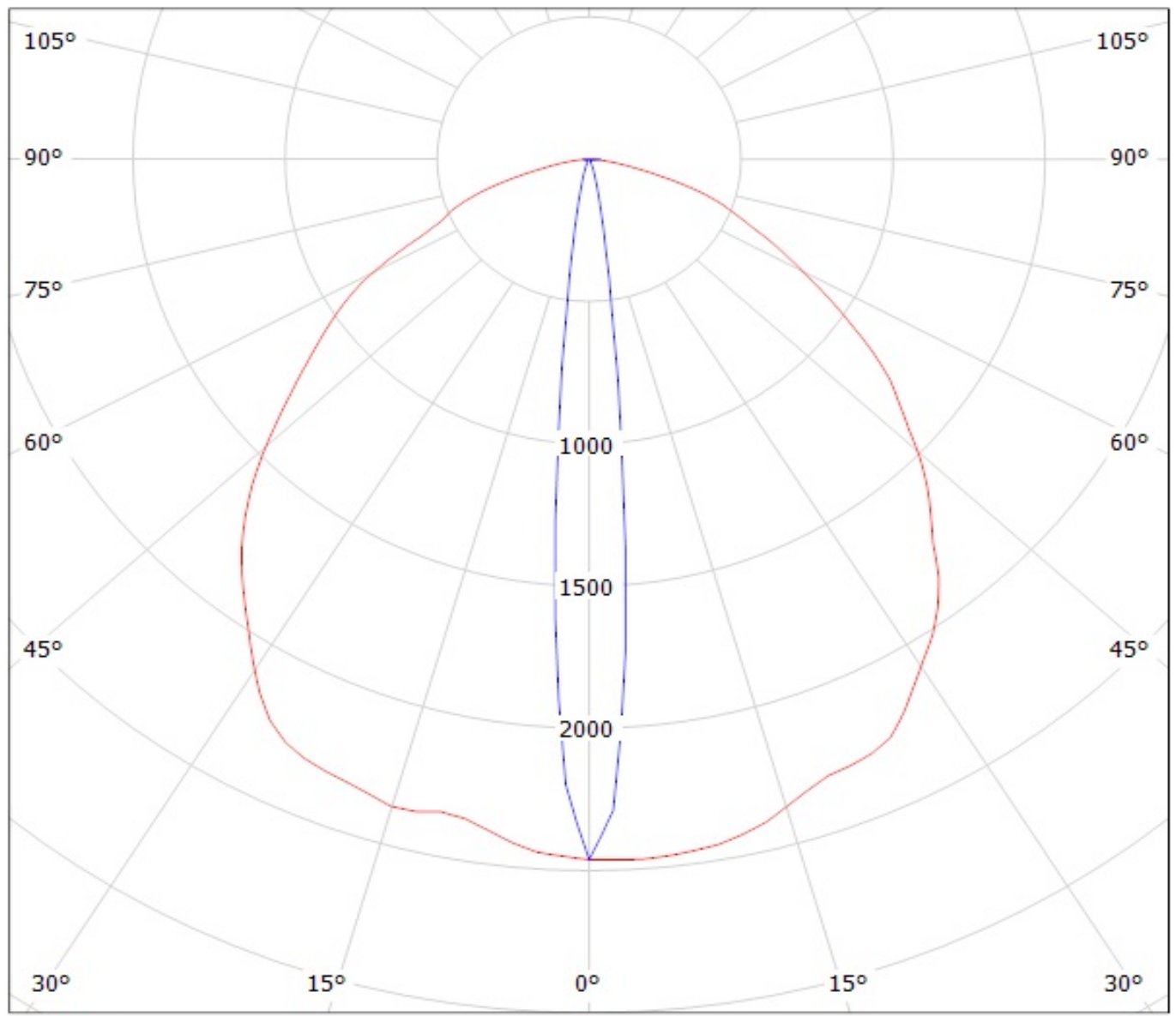


cd/klm

— C0 - C180

— C90 - C270

Luminaire: Ledil Oy C12868\_FLARE-MAXI (Cree XP-G 71lm @ 250mA) Efficiency=94%  
Lamps: 1 x Cree XP-G 71lm @ 250mA

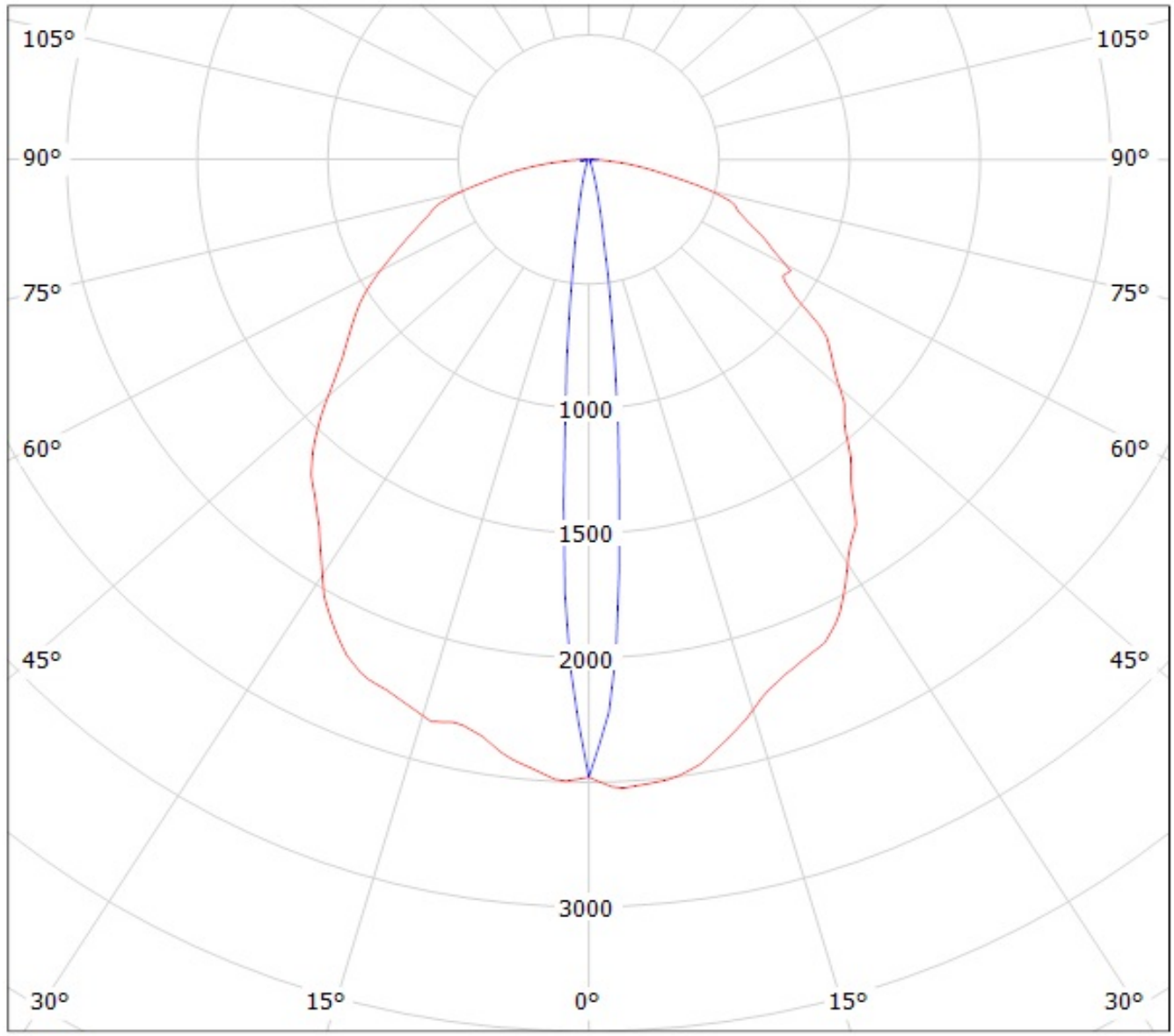


cd/klm

— C0 - C180

— C90 - C270

Luminaire: Ledil Oy C12868\_FLARE-MAXI (Cree XT-E 94lm @ 250mA) Efficiency=94%  
Lamps: 1 x Cree XT-E 94lm @ 250mA



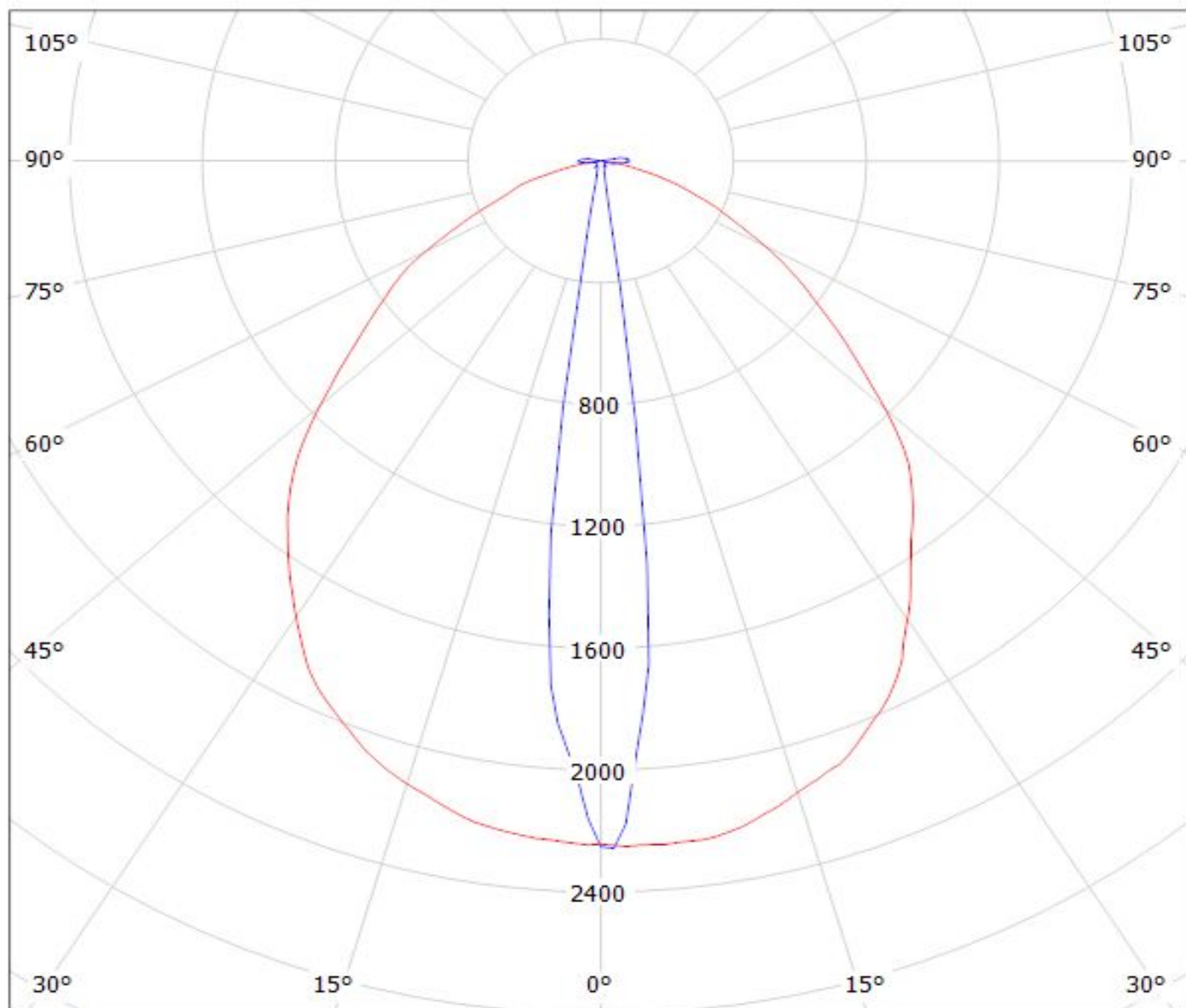
cd/klm

— C0 - C180

— C90 - C270



Luminaire: LEDiL Oy C12868\_FLARE-MAXI (XM-L2) Eff.94.0%  
Lamps: 1 x CREE\_XM-L2 (XMLBWT-0-7B4-T30-0L-001)  
\_96.42lm@250mA\_CCT3233K\_P=0.735556W\_I=249.9mA

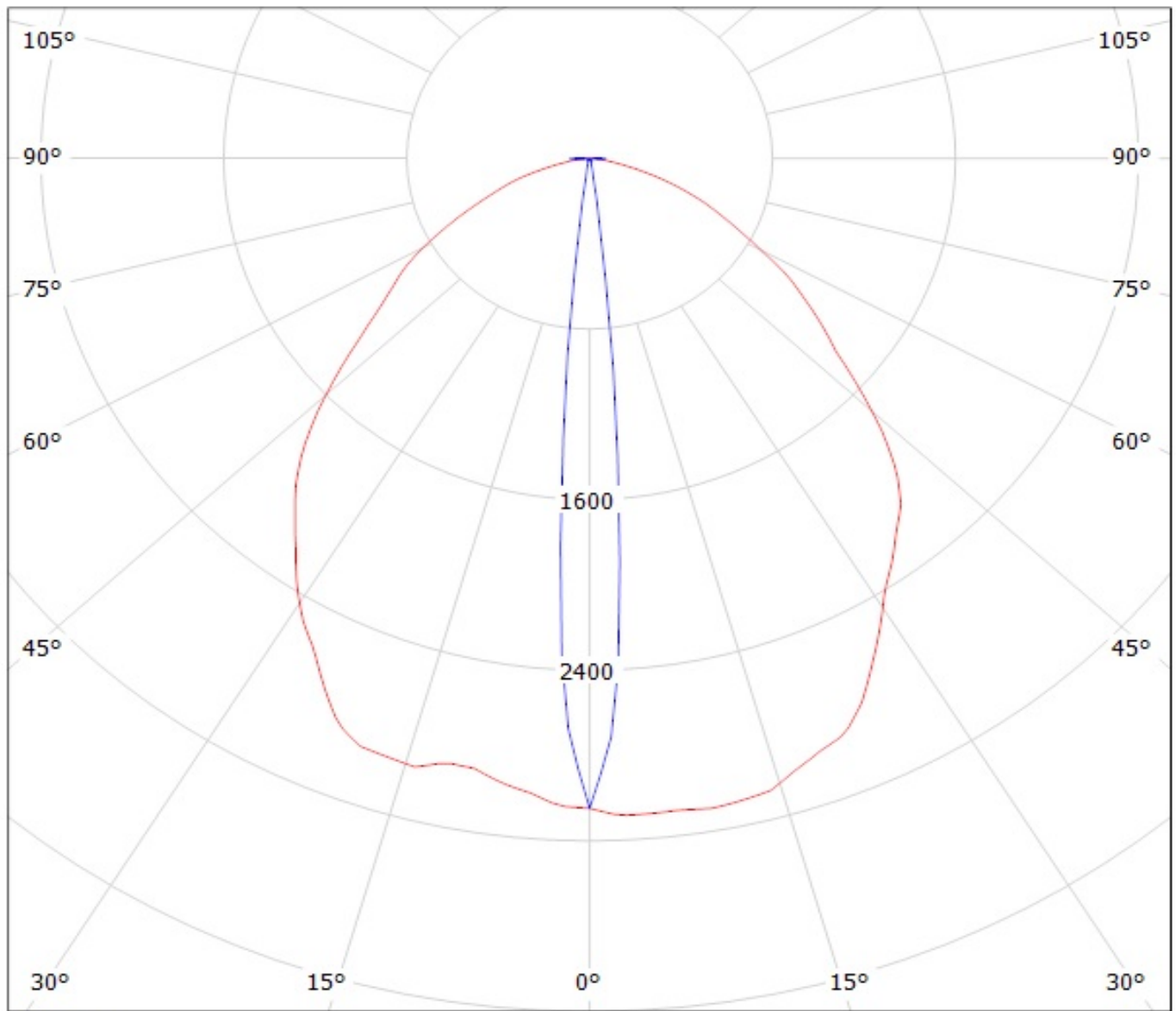


cd/klm

— C0 - C180    — C90 - C270

$\eta = 94\%$

Luminaire: Ledil Oy C12868\_FLARE-MAXI (Cree XP-G2 98lm @ 250mA) Efficiency=94%  
Lamps: 1 x Cree XP-G2 98lm @ 250mA CCT=6596K P=0,75W I=250mA

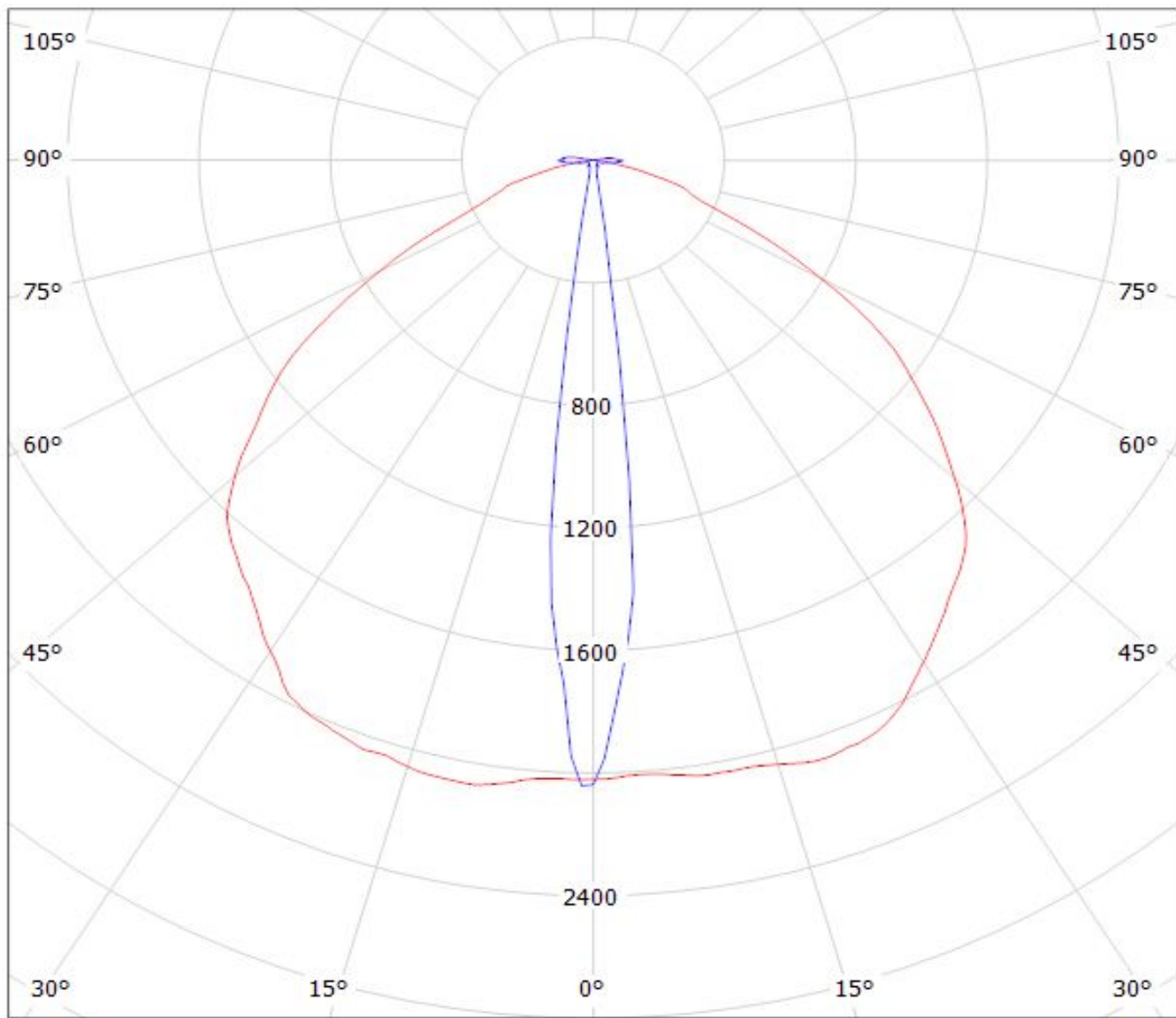


cd/klm

— C0 - C180

— C90 - C270

Luminaire: LEDiL Oy C12868\_FLARE-MAXI\_(XP-L)  
Lamps: 1 x Cree\_XP-L\_130lm@250mA\_P=0.73723W\_I=249.9mA



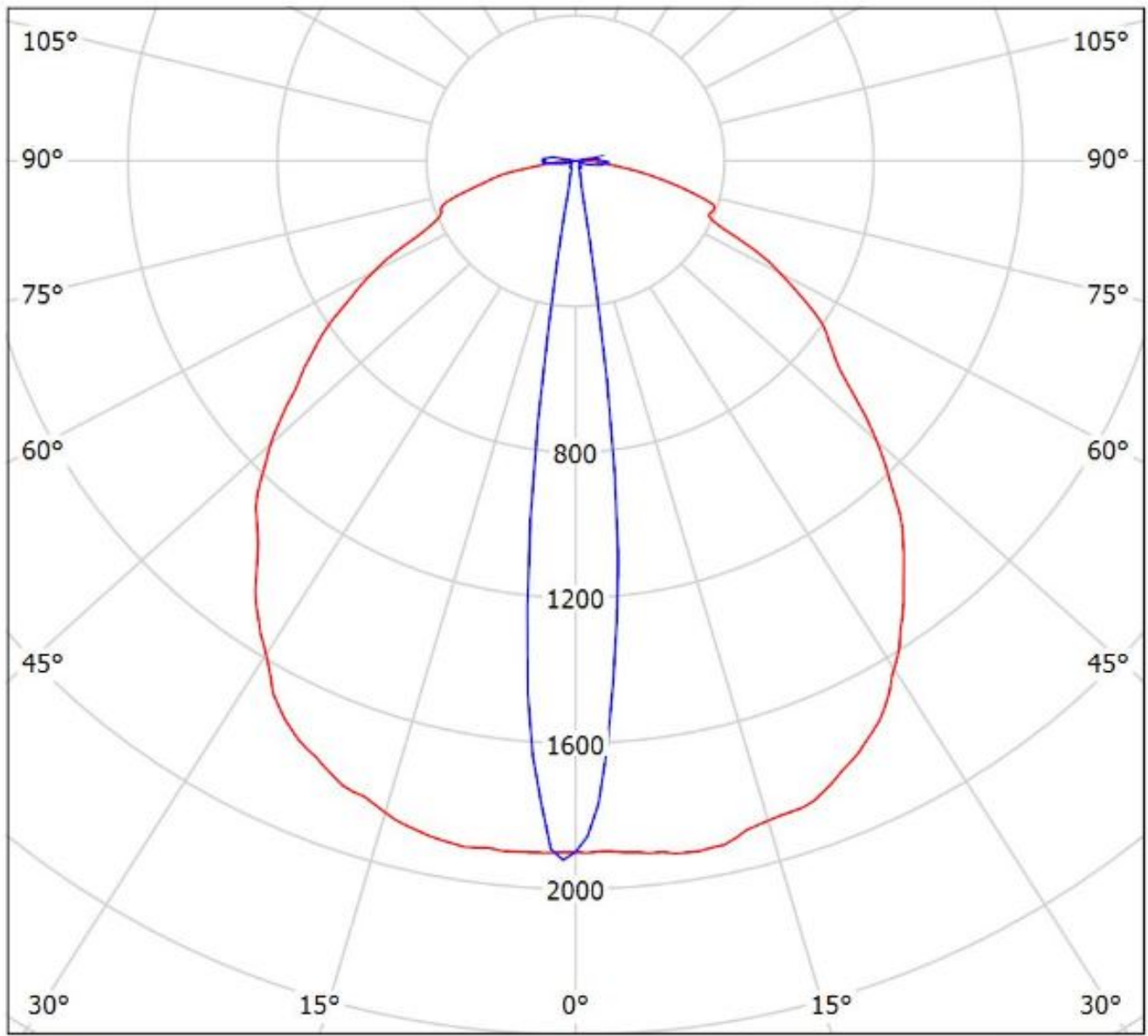
cd/klm

— C0 - C180    — C90 - C270

$\eta = 94\%$

Luminaire: Ledil C12868\_FLARE-MAXI\_(XP-L2)

Lamps: 1 x Cree\_XP-L2\_(XPLWT-00-0000-000HU630G)\_115.505lm@250mA\_P=0.72165W\_I=0.25A



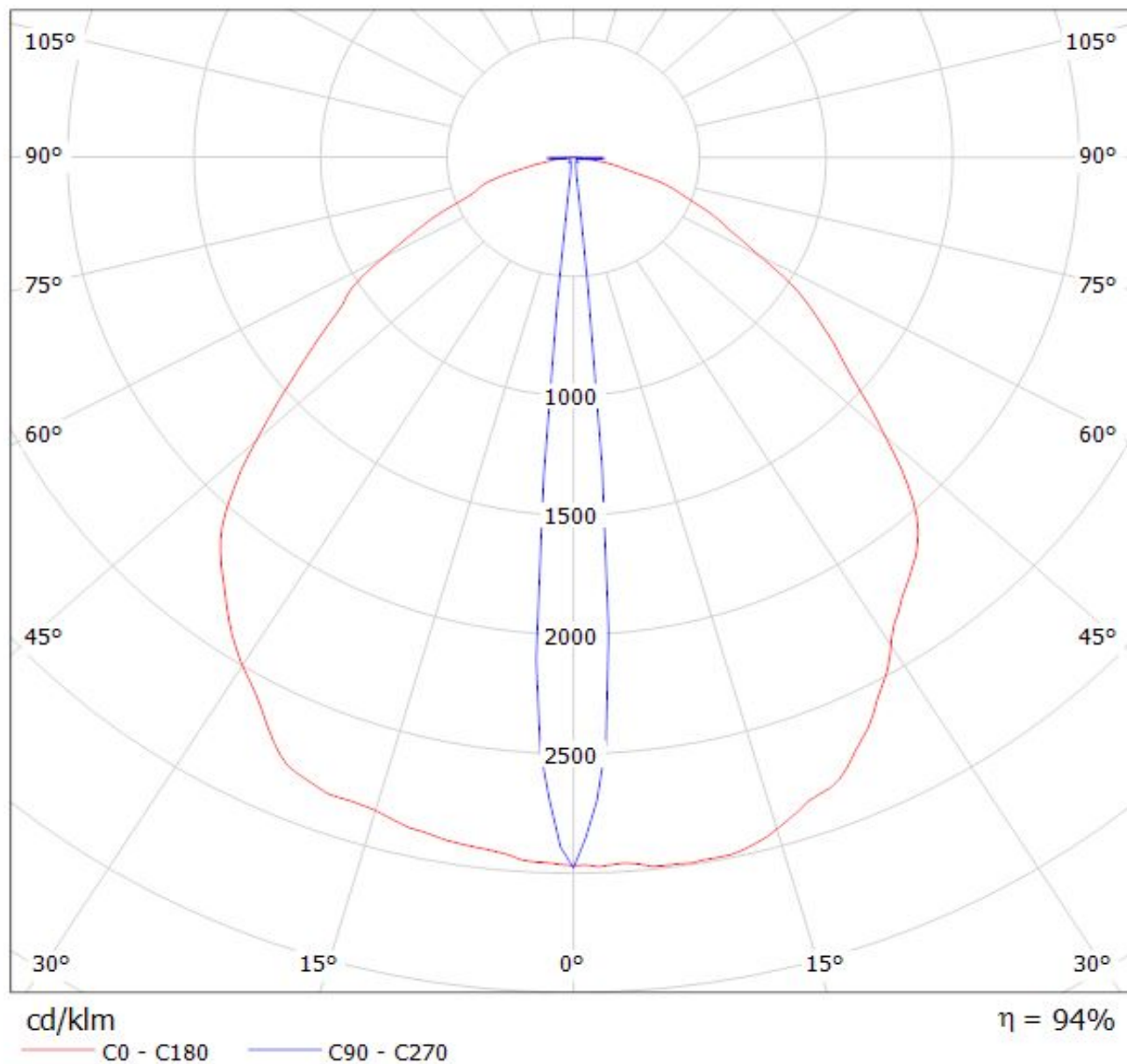
cd/klm

— C0 - C180

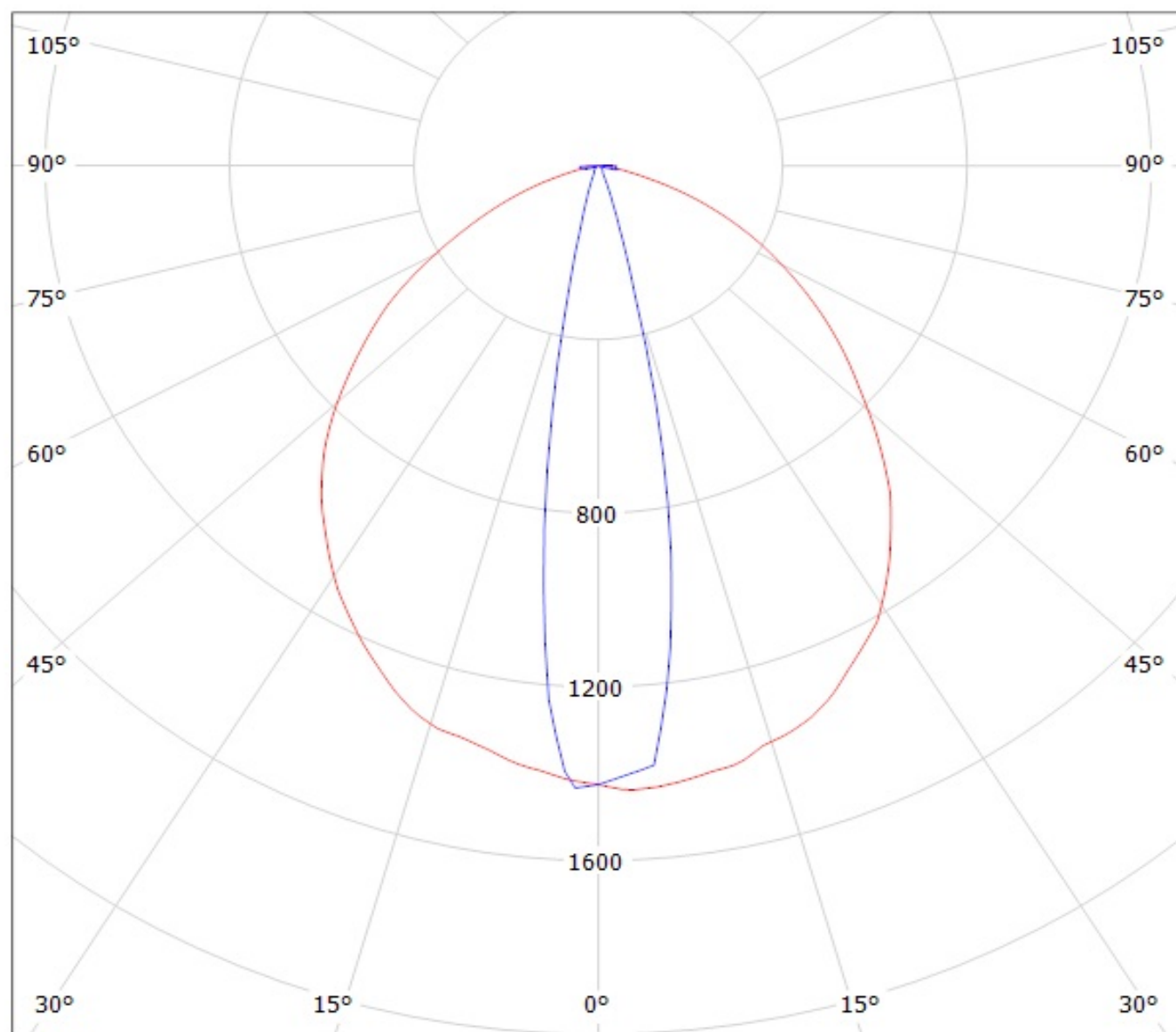
— C90 - C270

$\eta = 96\%$

Luminaire: LEDiL Oy C12868\_FLARE-MAXI\_(LG-3535-CERAMIC-GEN2) Eff. 94%  
Lamps: 1 x LG-3535-CERAMIC-GEN2\_118lm@250mA\_P=0.754973W\_CCT=6235K\_I=249.9mA



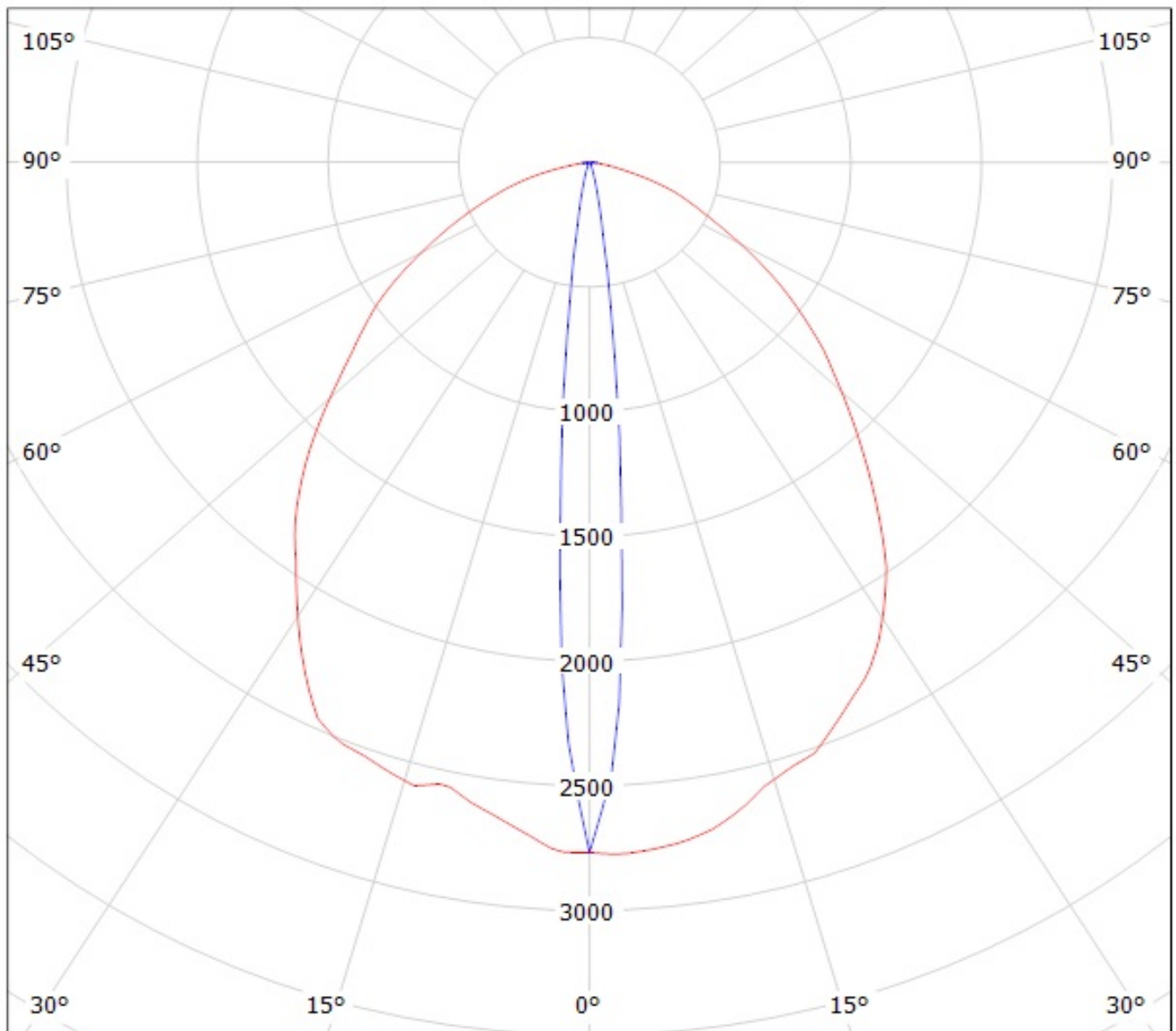
Luminaire: Ledil Oy C12868\_FLARE-MAXI (Luxeon M 361lm @ 250mA) Efficiency=94%  
Lamps: 1 x Luxeon M 361lm @ 250mA



cd/klm

— C0 - C180    — C90 - C270

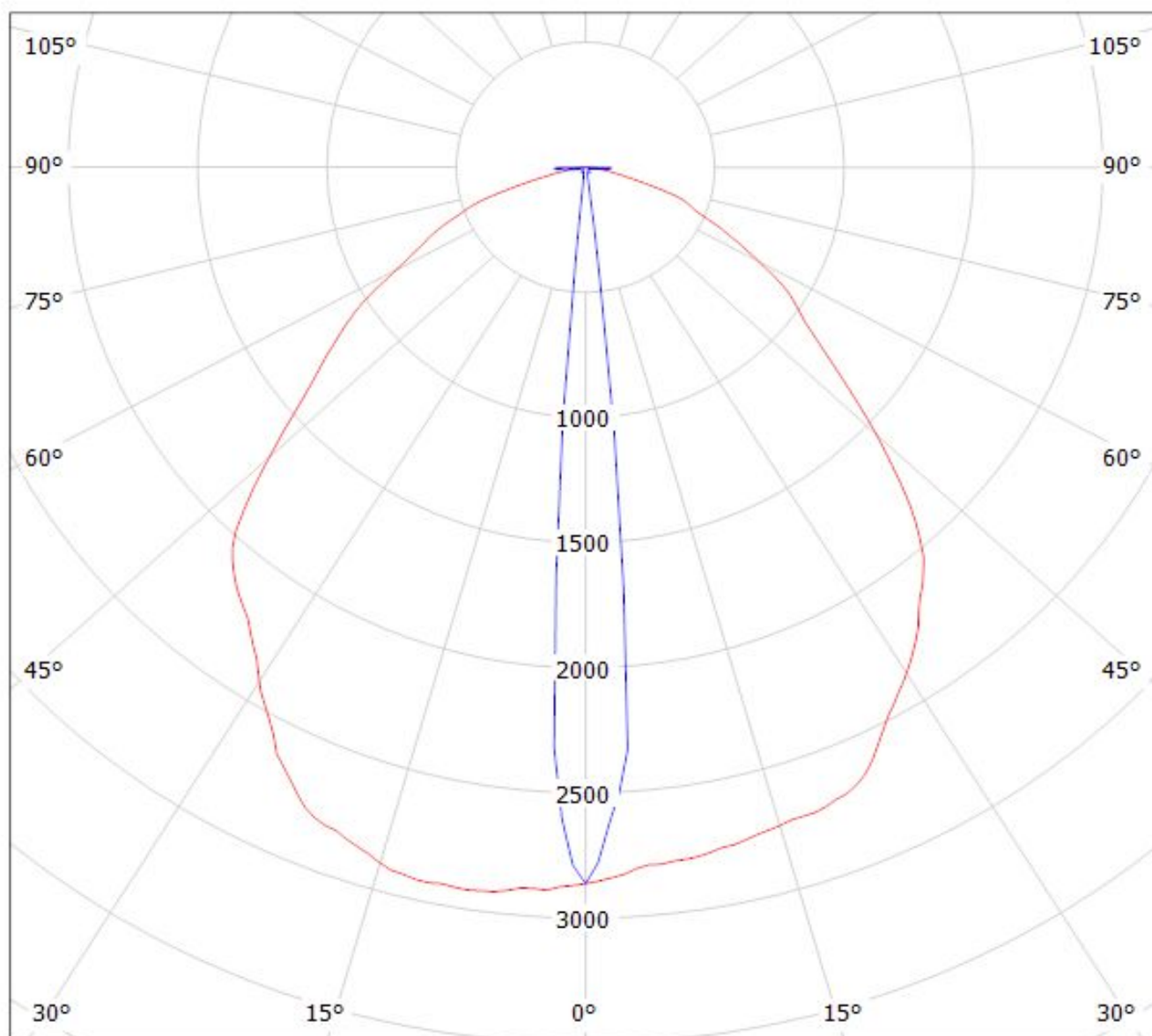
Luminaire: Ledil Oy C12868\_FLARE-MAXI (Luxeon Rebel ES 89lm @ 250mA) Efficiency=94%  
Lamps: 1 x Luxeon Rebel ES 89lm @ 250mA



cd/klm

— C0 - C180    — C90 - C270

Luminaire: LEDiL Oy C12868\_FLARE-MAXI\_(LUXEON\_T)\_3 Eff.91.5%  
Lamps: 1 x LUXEON T (74lm@250mA)



cd/klm

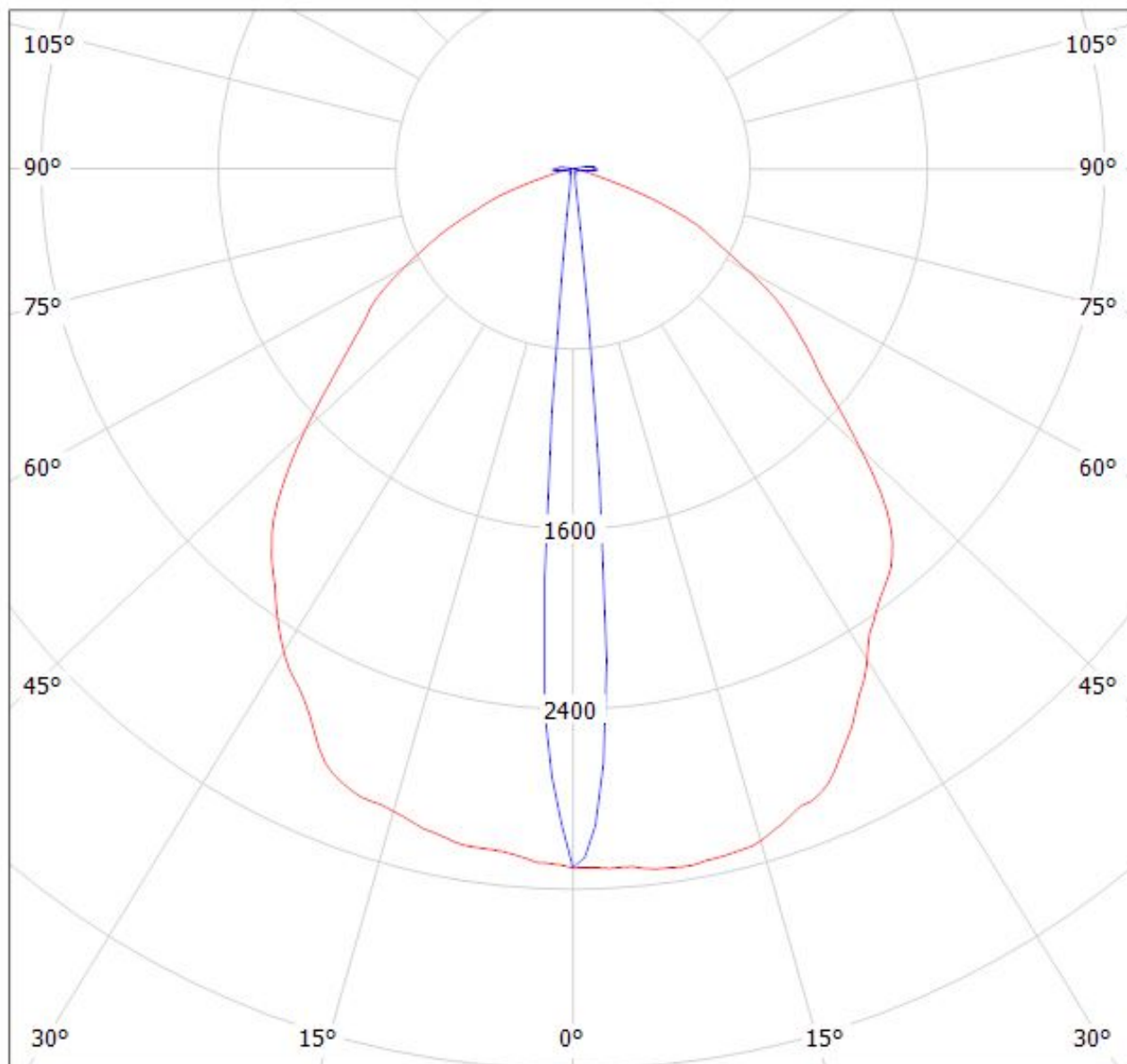
η = 91%

— C0 - C180    — C90 - C270



Luminaire: LEDiL Oy C12868\_FLARE-MAXI\_(Luxeon\_TX)

Lamps: 1 x Luxeon\_TX\_(L1T2-3585)\_80.1801lm@250mA\_CCT=3500K\_P=0.731482W\_I=249.9mA



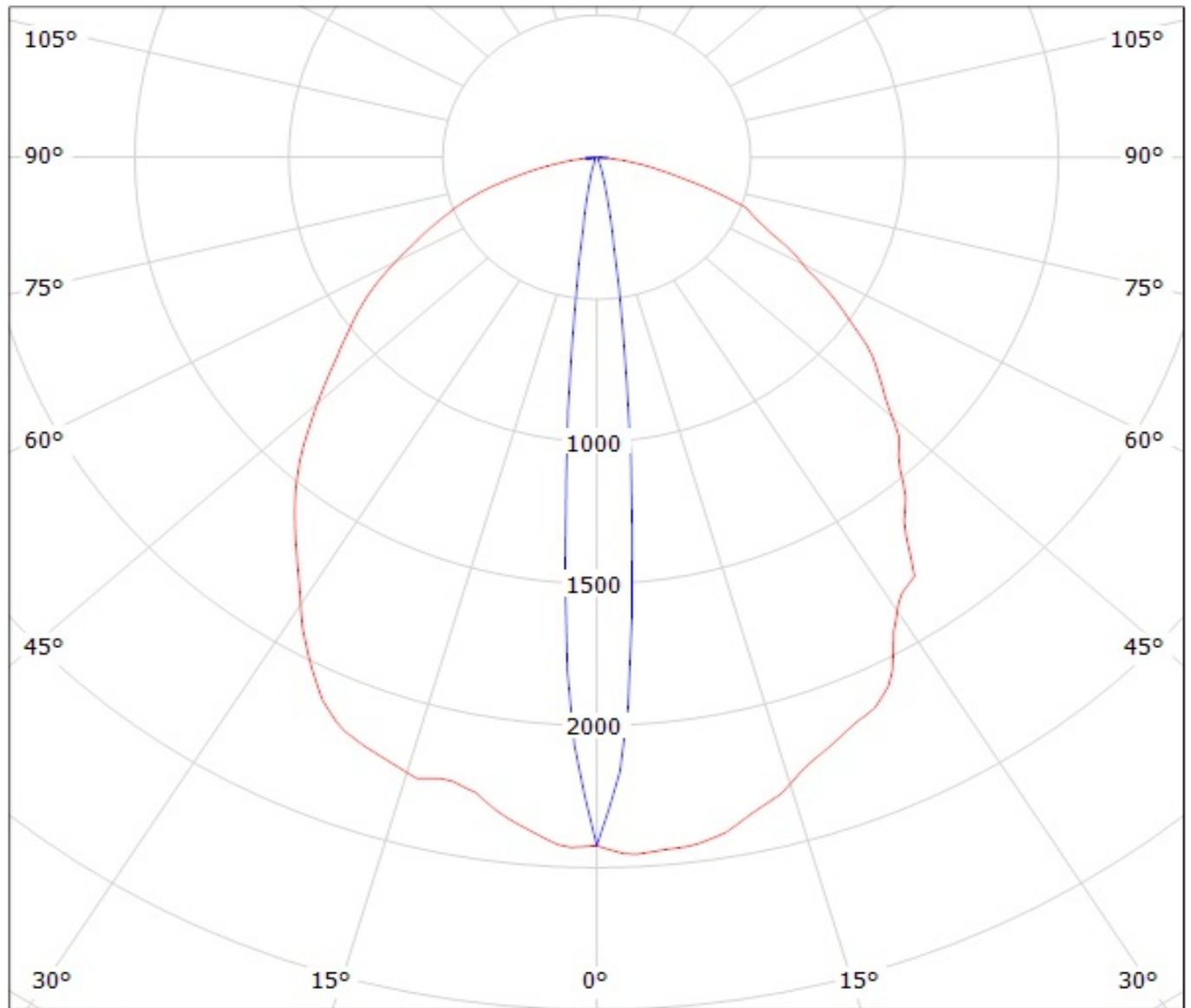
cd/klm

$\eta = 95\%$

— C0 - C180

— C90 - C270

Luminaire: Ledil Oy C12868\_FLARE-MAXI (Nichia 219B 109lm @ 250mA) Efficiency=94%  
Lamps: 1 x Nichia 219B 109lm @ 250mA

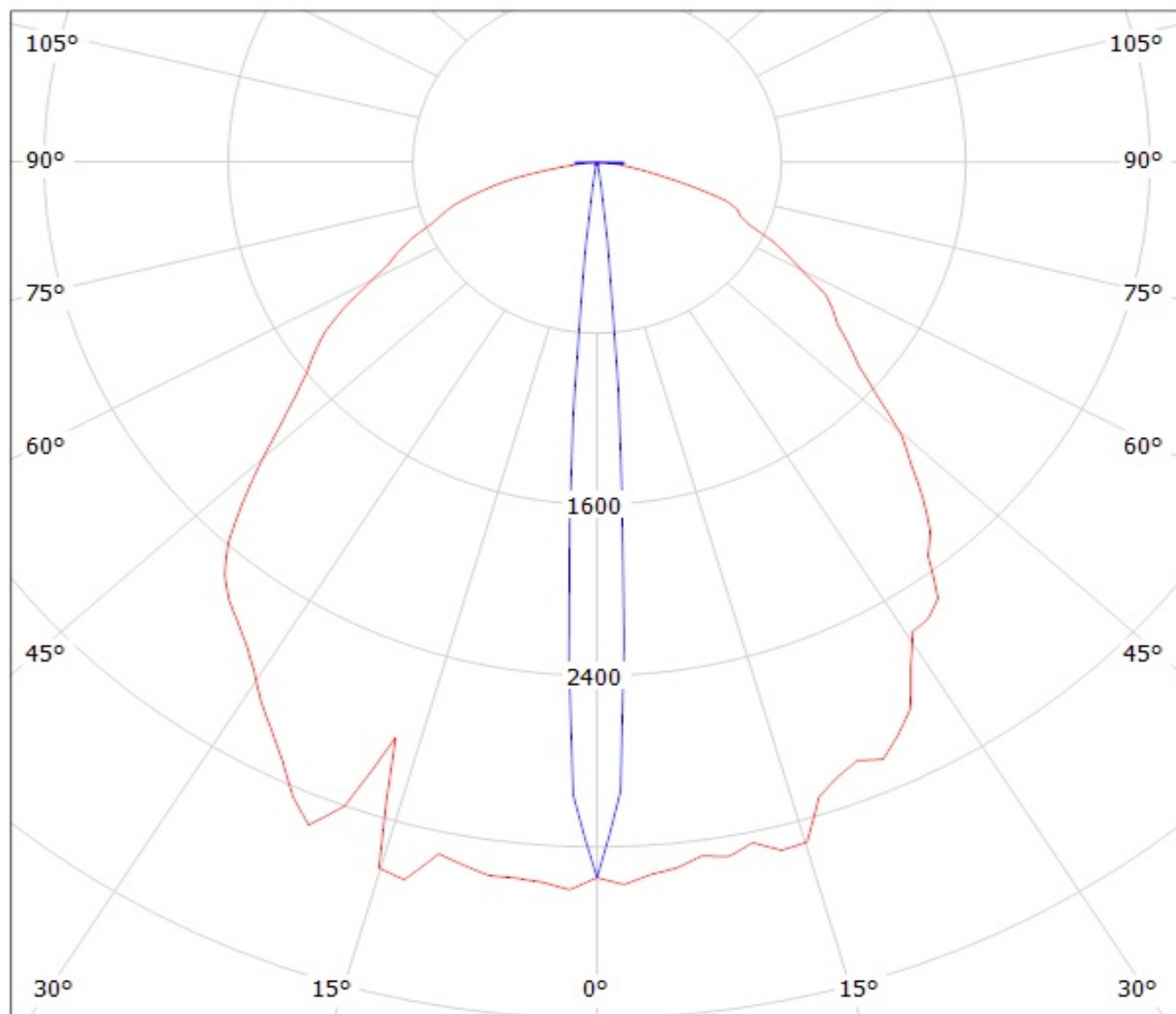


cd/klm

— C0 - C180

— C90 - C270

Luminaire: Ledil Oy C12868\_FLARE-MAXI\_(NCSxx19B) Efficiency=94%  
Lamps: 1 x Nichia NCSxx19B (NCSL119BE) 88lm @ 250mA CCT=3000K P=0.8W I=250mA



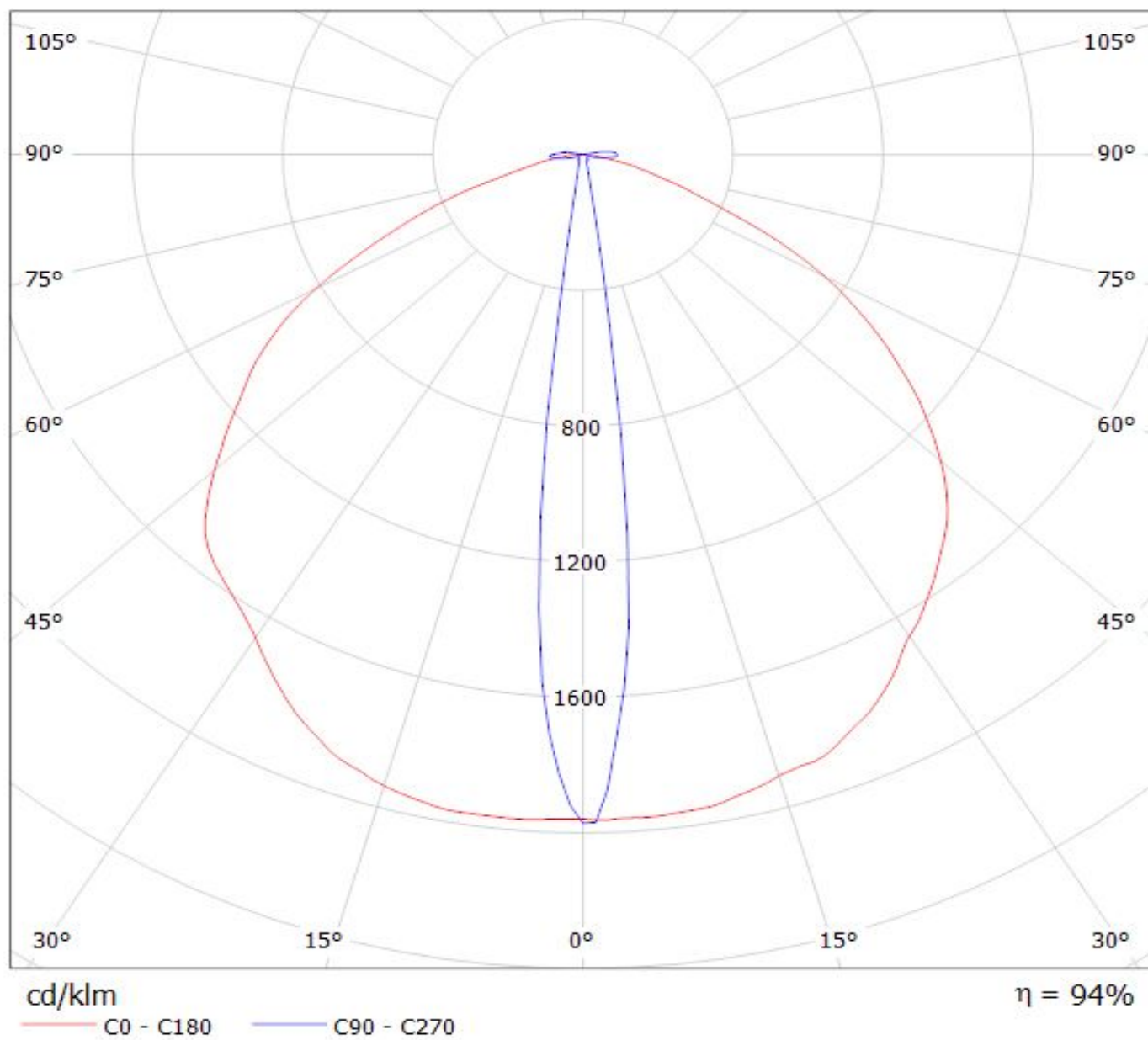
cd/klm

— C0 - C180

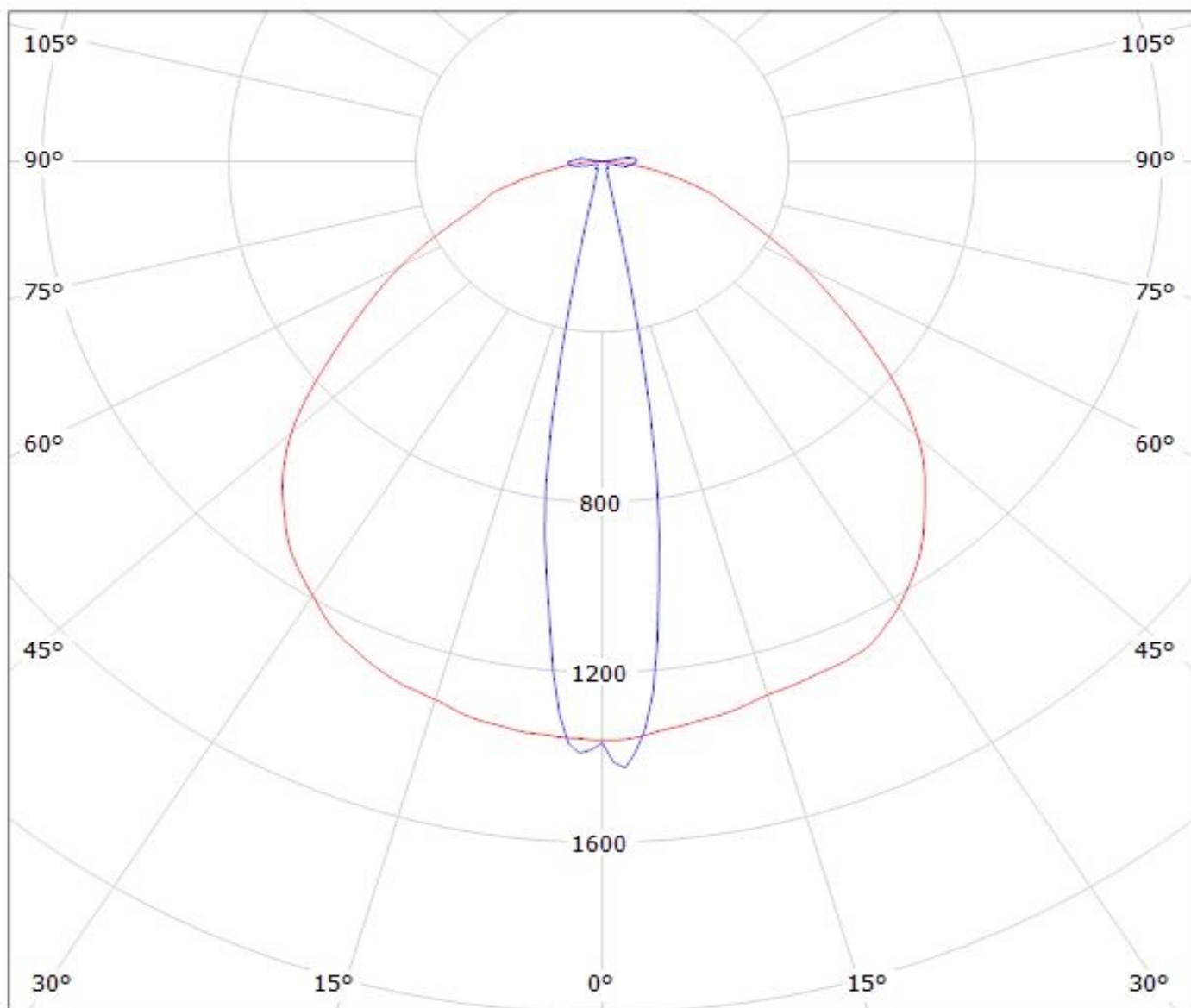
— C90 - C270

Luminaire: LEDiL Oy C12868\_FLARE-MAXI\_(NWSL229AE)

Lamps: 1 x Nichia\_NWSL229AE\_120.54lm@250mA\_P=0.7128W\_I=0.250A



Luminaire: LEDiL Oy C12868\_FLARE-MAXI\_(Nichia\_NV4x144A)  
Lamps: 1 x Nichia\_NV4x144A\_478.709lm@250mA\_P=2.8097W\_I=0.250A



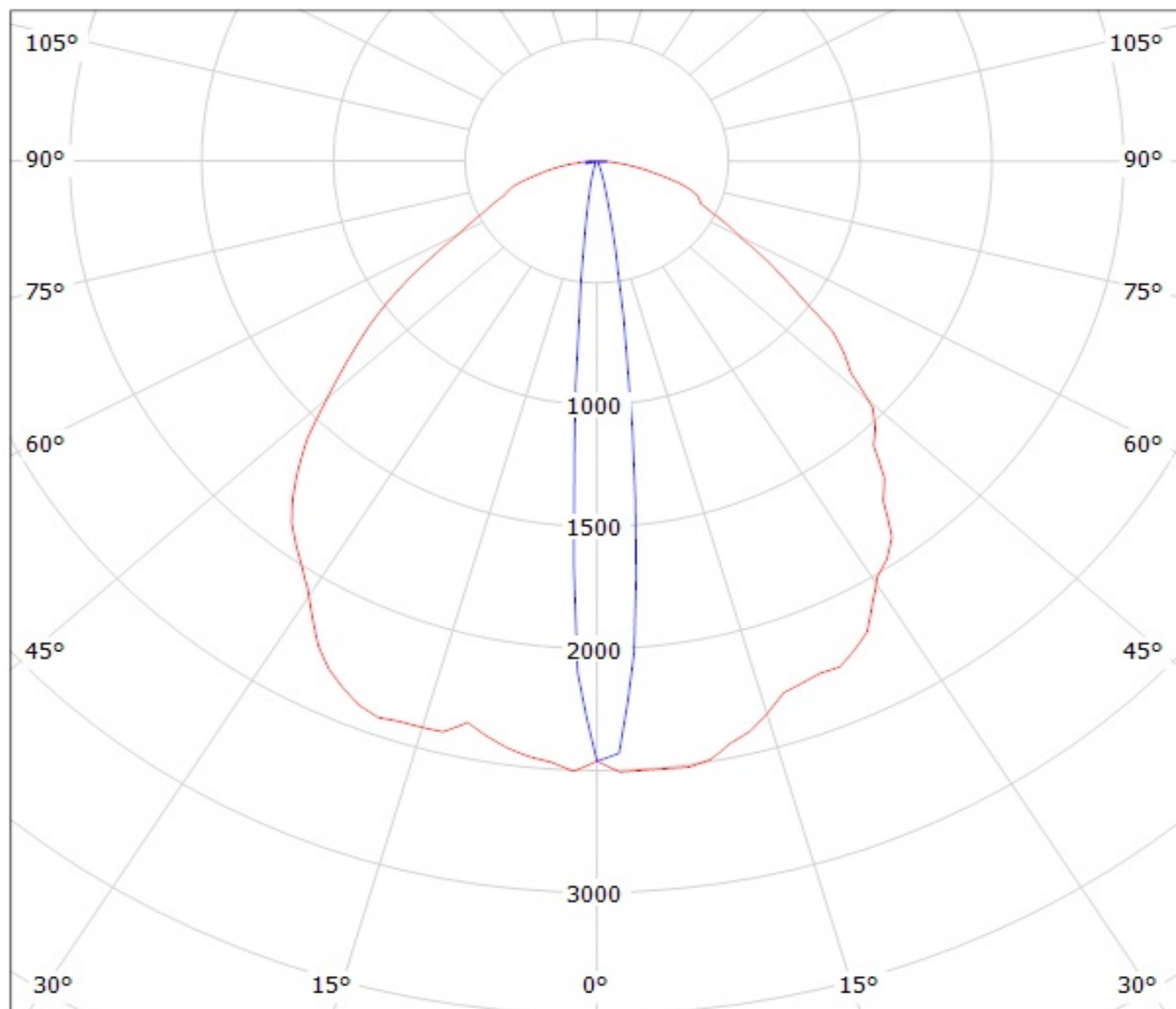
cd/klm

— C0 - C180

— C90 - C270

$\eta = 94\%$

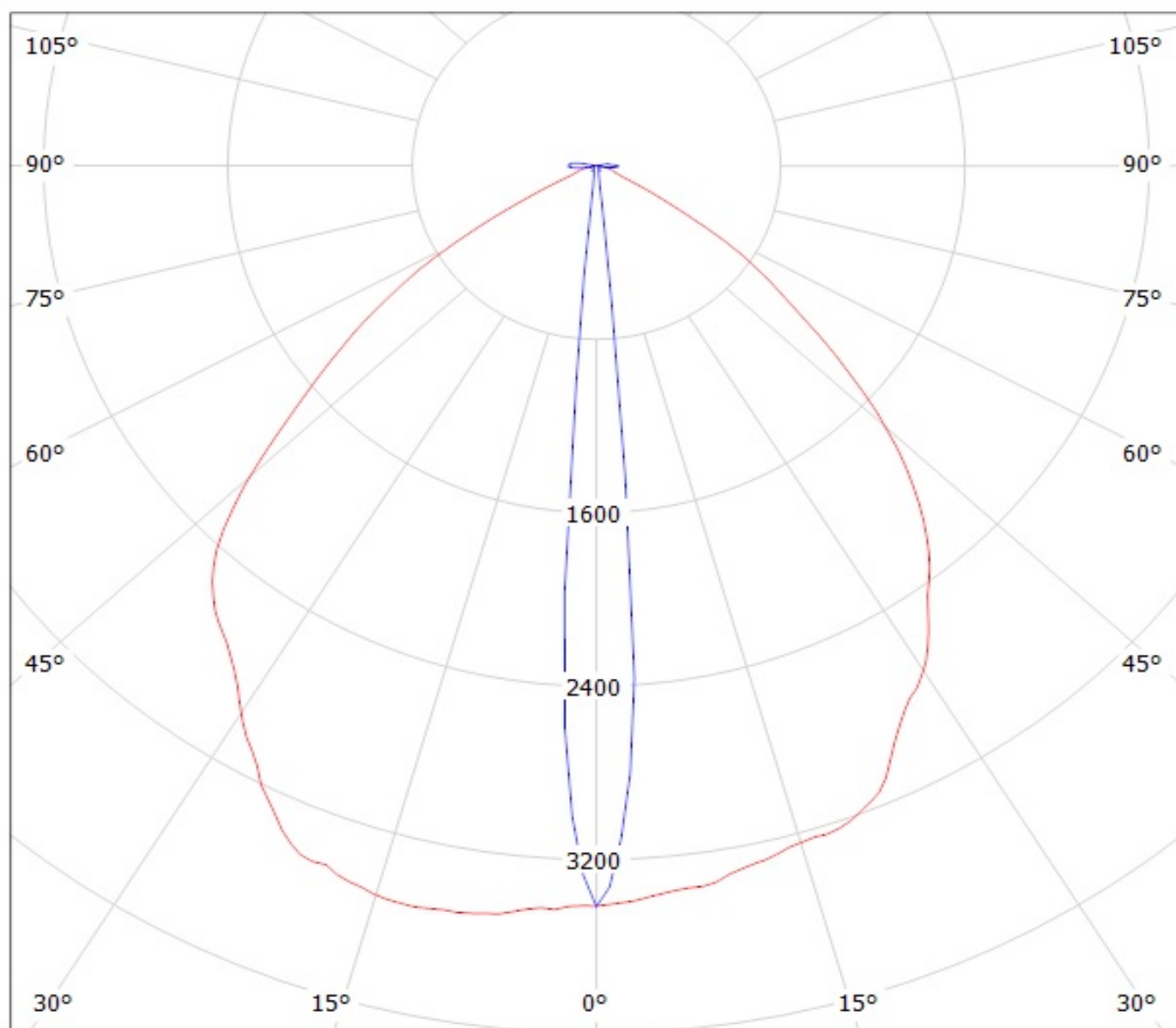
Luminaire: Ledil Oy C12868\_FLARE-MAXI (Osram Square PC 88lm @ 250mA) Efficiency=94%  
Lamps: 1 x Osram Square PC 88lm @ 250mA



cd/klm

— C0 - C180    — C90 - C270

Luminaire: LEDiL Oy C12868\_FLARE-MAXI\_(LH351Z) Eff.93.6%  
Lamps: 1 x SAMSUNG\_LH351Z\_90.8111lm@250mA\_P=0.748076W\_I=249.9mA



cd/klm

— C0 - C180    — C90 - C270

**NOTE: The typical divergence will be changed by different color, chip size and chip position tolerance. The typical total divergence is the full angle measured where the luminous intensity is half of the peak value.**