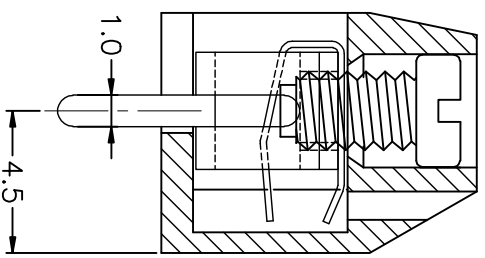
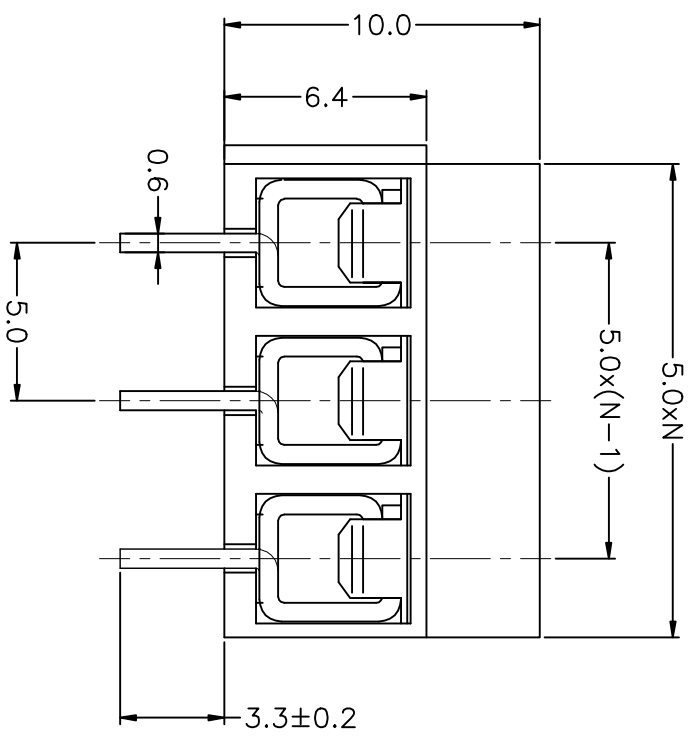
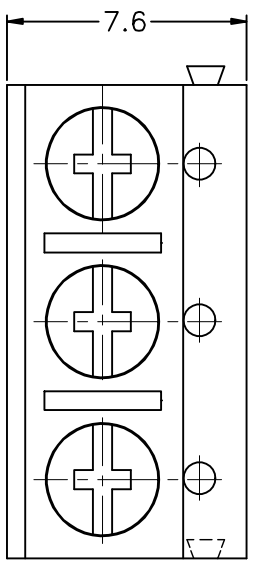


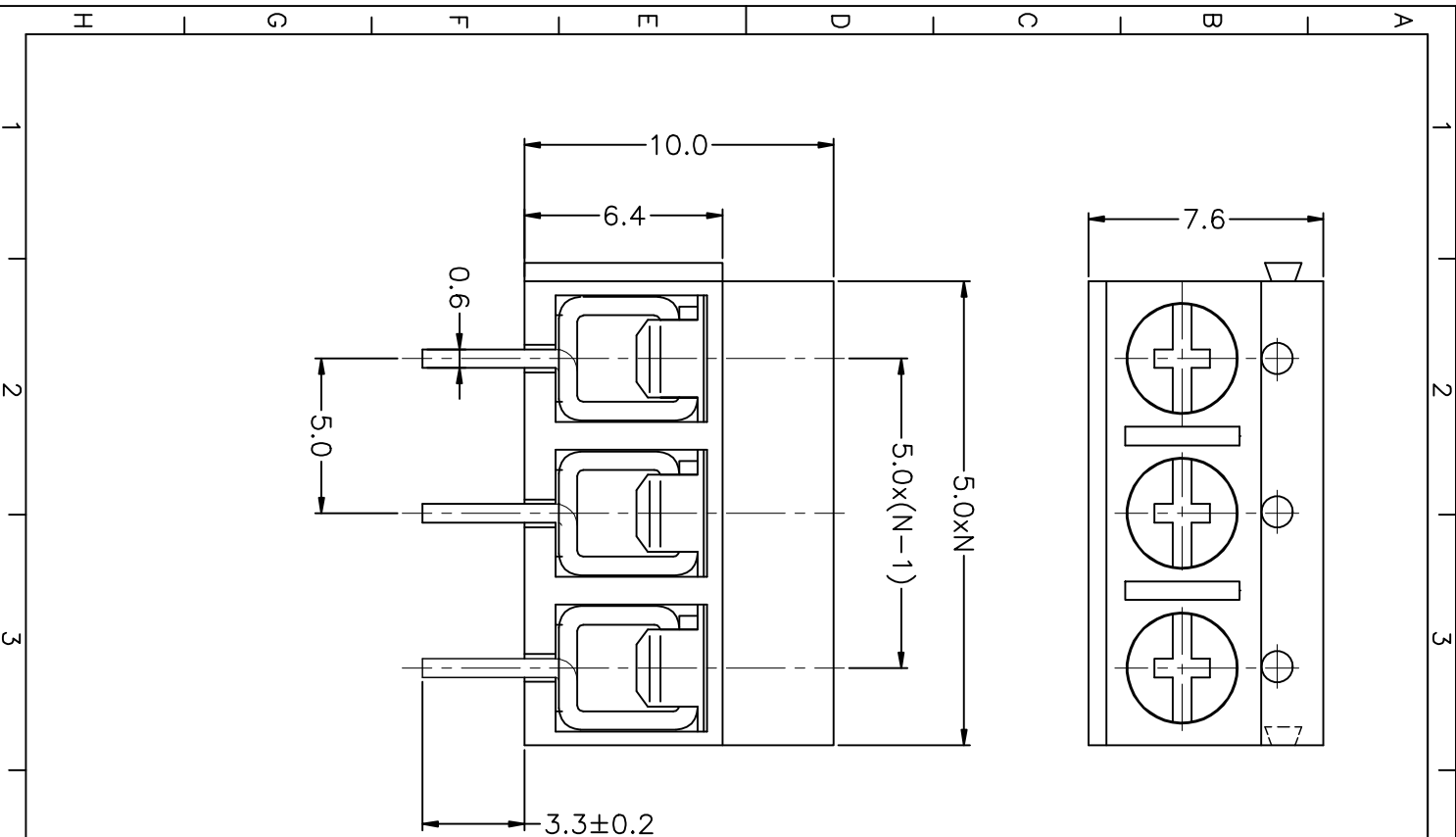
REV	DESCRIPTION	DRAWN	CHECKED	APPROVED



Material
 Screws: M2.5 Steel Zinc Plated
 Wire guard: phosphor bronze Ni plated
 or stainless steel
 Pin Header: Brass, Tin Plated
 Housing: PBT, UL94V-0

Electrical
 Rated Voltage: 300V
 Rated Current: 12A
 Contact Resistance: 20mOhm
 Insulation Resistance: 5000MOhm/1000V
 Withstanding Voltage: AC 1500V/1Min
 Wire Range: 24 - 14AWG

Mechanical
 Temp. Range: -30C - +120C
 Max. Soldering: +250C for 5sec
 Torque: 0.4Nm
 Strip Length: 4.5 - 5mm



GENERAL TOLERANCE		ANGLE TOLERANCE		PROJECTION	TITLE	EURO TERMINAL BLOCKS	
X.	±0.25	X.	±5°	UNITS	mm	PITCH 5.00MM	
.X	±0.15	.X	±3°	SHEET SIZE	A4	SERIES	KF302 SERIES
.XX	±0.10	.XX	±2°	DRAWING TYPE	1:1	SHEET 1 OF 1	
SCALE		DRAWING NO.		 慈溪市凯峰电子有限公司 KAIFENG ELECTRONIC CO.,LTD			