

IDC TRANSITION PLUG (SMT TYPE)

PITCH: 2.5mm

SPECIFICATIONS

Material

Insulator : LCP, glass reinforced, rated UL 94V-0

Contact : Phosphor Bronze

Electrical

Current Rating : 1 Amp

Contact Resistance : 30 mΩ max.

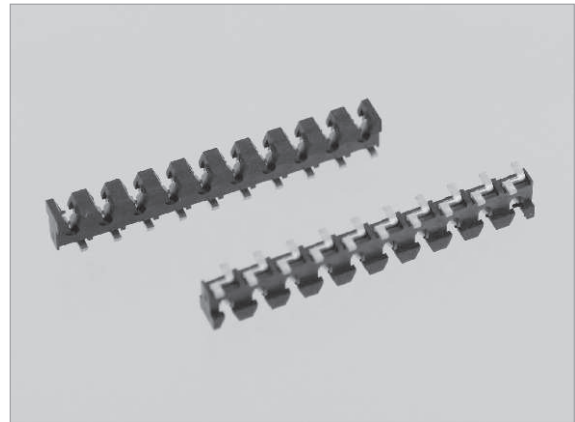
Insulation Resistance : 3000 MΩ min.

Dielectric Withstanding Voltage : 500V AC for 1minute

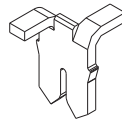
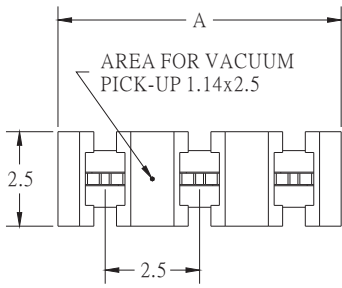
Operating Temperature : -40°C to +105°C

Terminated with discrete wire :

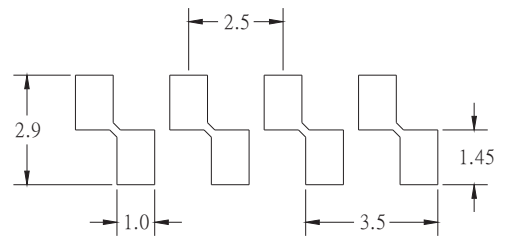
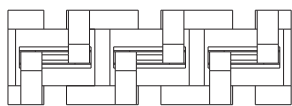
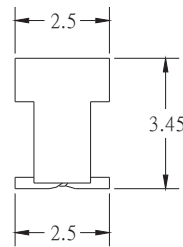
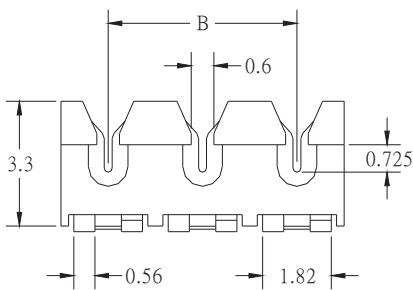
#26AWG, #28AWG (Insulation O.D. 0.7 to 1.0mm)



A



POSITION	A	B
01	2.5	—
02	5.0	2.5
03	7.5	5.0
04	10.0	7.5
05	12.5	10.0
06	15.0	12.5
07	17.5	15.0
08	20.0	17.5
09	22.5	20.0
10	25.0	22.5



RECOMMENDED P.C.B LAYOUT