

Descriptions

This series of fixed-negative-voltage monolithic integrated-circuit voltage regulators is designed to complement series S7800 in a wide range of applications. These applications include on-card regulator for elimination of noise and distribution problems associated with single point regulations. Each of these regulators can deliver up to 1.0 amperes of output current. The internal current Limiting and thermal shutdown features of these regulators make them essentially immune to overload. In addition to use as fixed-voltage regulators, these devices can be used with external components to obtain adjustable output voltages and also as the power pass element in precision regulators.

Features

- Output Current of 1A
- Thermal Shutdown Protection
- Short-Circuit Current Limit Protection
- No External Components
- Output Transistor Safe Operating Area Protection

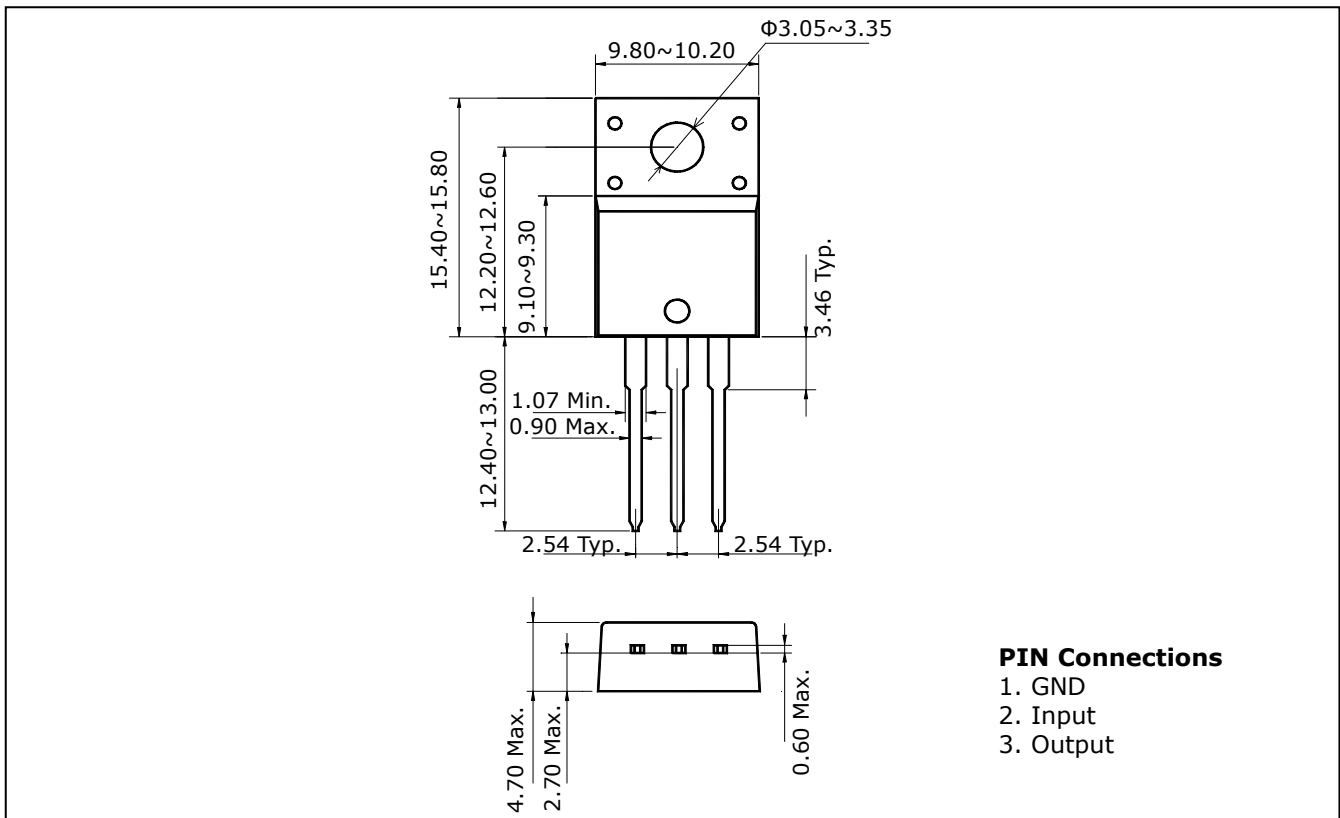
Ordering Information

Type NO.	Marking	Package Code
S79xxPI	S79□□PI	TO-220F-3L

□□: Voltage Code (05: -5V, 08: -8V, 09: -9V, 12: -12V, 15: -15V)

Outline Dimensions

unit: mm



Absolute Maximum Ratings

Ta=25°C

Characteristic	Symbol	Ratings	Unit
Operating Input Voltage	V _{IN}	-35	V
Power Dissipation (Tc=25°C)	P _D	20.8	W
Power Dissipation (without Heatsink)	P _D	2.0	W
Operating Temperature Range	T _{opr}	-40 ~ 85	°C
Junction Temperature	T _j	150	°C
Storage Temperature Range	T _{STG}	-55 ~ 150	°C

Electrical Characteristics

(T_j = 0 to 125°C, Vin = -10V, Iout=500mA, unless otherwise specified.)

Characteristic	Symbol	Test Condition *	S7905PI			Unit	
			Min.	Typ.	Max.		
Output Voltage **	V _{OUT}	T _j = 25°C	-5.20	-5.0	-4.80	V	
		I _{OUT} =5mA ~ 1A, V _{IN} =-20V ~ -7.0V	-5.25	-5.0	-4.75		
Line Regulation	ΔV _{OUT}	V _{IN} =-25V ~ -7.0V	-	12.5	50	mV	
		V _{IN} =-12V ~ -8.0V	-	4	15		
Load Regulation	ΔV _{OUT}	I _{OUT} =5mA ~ 1.0A	-	15	100	mV	
		I _{OUT} =250mA ~ 750mA	-	5	50		
Quiescent Current	I _B	T _j = 25°C	-	1.5	2.0	mA	
Quiescent Current Change	ΔI _B	V _{IN} = -25V ~ -7.0V	-	0.15	0.5	mA	
		I _{OUT} = 5mA ~ 1A	-	0.08	0.5		
Output Noise Voltage	V _N	f=10Hz ~ 100KHz	T _j = 25°C	-	125	-	uV _{rms}
Ripple Rejection Ratio	RR	f=120Hz, V _{IN} =-18V ~ -8.0V		54	60	-	dB
Dropout Voltage	V _D	I _{OUT} =1A	T _j = 25°C	-	2.0	-	V
Temperature Coefficient of Output Voltage Drift	T _{CV0}	I _{OUT} =5mA		-	-0.4	-	mV/°C
Peak Output Current	I _{PK}		T _j = 25°C	-	2.1	-	A

* Pulse testing techniques are used to maintain the junction temperature as close to the ambient temperature as possible. Thermal effects must be taken into separately.

** This specification applies only for dc power dissipation permitted by absolute maximum ratings.

Electrical Characteristics

($T_j = 0$ to 125°C , $V_{in} = -14\text{V}$, $I_{out} = 500\text{mA}$, unless otherwise specified.)

Characteristic	Symbol	Test Condition*		S7908PI			Unit
				Min.	Typ.	Max.	
Output Voltage**	V_{OUT}		$T_j = 25^\circ\text{C}$	-8.30	-8.0	-7.70	V
		$I_{OUT} = 5\text{mA} \sim 1\text{A}$, $V_{IN} = -23\text{V} \sim -10.5\text{V}$		-8.40	-8.0	-7.60	
Line Regulation	ΔV_{OUT}	$V_{IN} = -25\text{V} \sim -10.5\text{V}$	$T_j = 25^\circ\text{C}$	-	12.5	160	mV
		$V_{IN} = -17\text{V} \sim -11\text{V}$		-	4	80	
Load Regulation	ΔV_{OUT}	$I_{OUT} = 5\text{mA} \sim 1.0\text{A}$	$T_j = 25^\circ\text{C}$	-	15	160	mV
		$I_{OUT} = 250\text{mA} \sim 750\text{mA}$		-	5	80	
Quiescent Current	I_B		$T_j = 25^\circ\text{C}$	-	1.5	2.0	mA
Quiescent Current Change	ΔI_B	$V_{IN} = -25\text{V} \sim -10.5\text{V}$		-	0.15	1.0	mA
		$I_{OUT} = 5\text{mA} \sim 1\text{A}$		-	0.08	0.5	
Output Noise Voltage	V_N	$f = 10\text{Hz} \sim 100\text{KHz}$	$T_j = 25^\circ\text{C}$	-	200	-	μV_{rms}
Ripple Rejection Ratio	RR	$f = 120\text{Hz}$, $V_{IN} = -21.5\text{V} \sim -11.5\text{V}$		54	60	-	dB
Dropout Voltage	V_D	$I_{OUT} = 1\text{A}$	$T_j = 25^\circ\text{C}$	-	2.0	-	V
Temperature Coefficient of Output Voltage Drift	T_{CVO}	$I_{OUT} = 5\text{mA}$	$T_j = 25^\circ\text{C}$	-	-0.6	-	$\text{mV}/^\circ\text{C}$
Peak Output Current	I_{PK}		$T_j = 25^\circ\text{C}$	-	2.1	-	A

* Pulse testing techniques are used to maintain the junction temperature as close to the ambient temperature as possible. Thermal effects must be taken into separately.

** This specification applies only for dc power dissipation permitted by absolute maximum ratings.

Electrical Characteristics

($T_j = 0$ to 125°C , $V_{in} = -15\text{V}$, $I_{out} = 500\text{mA}$, unless otherwise specified.)

Characteristic	Symbol	Test Condition*		S7909PI			Unit
				Min.	Typ.	Max.	
Output Voltage**	V_{OUT}		$T_j = 25^\circ\text{C}$	-9.30	-9.0	-8.70	V
		$I_{OUT} = 5\text{mA} \sim 1\text{A}$, $V_{IN} = -23\text{V} \sim -11.5\text{V}$		-9.40	-9.0	-8.60	
Line Regulation	ΔV_{OUT}	$V_{IN} = -25\text{V} \sim -10.5\text{V}$	$T_j = 25^\circ\text{C}$	-	10	180	mV
		$V_{IN} = -17\text{V} \sim -11\text{V}$		-	5	90	
Load Regulation	ΔV_{OUT}	$I_{OUT} = 5\text{mA} \sim 1.0\text{A}$	$T_j = 25^\circ\text{C}$	-	12	180	mV
		$I_{OUT} = 250\text{mA} \sim 750\text{mA}$		-	4	90	
Quiescent Current	I_B		$T_j = 25^\circ\text{C}$	-	3	6	mA
Quiescent Current Change	ΔI_B	$V_{IN} = -25\text{V} \sim -11.5\text{V}$		-	0.1	1.0	mA
		$I_{OUT} = 5\text{mA} \sim 1\text{A}$		-	0.08	0.5	
Output Noise Voltage	V_N	$f = 10\text{Hz} \sim 100\text{KHz}$	$T_j = 25^\circ\text{C}$	-	175	-	μV_{rms}
Ripple Rejection Ratio	RR	$f = 120\text{Hz}$, $V_{IN} = -21.5\text{V} \sim -11.5\text{V}$		54	60	-	dB
Dropout Voltage	V_D	$I_{OUT} = 1\text{A}$	$T_j = 25^\circ\text{C}$	-	2.0	-	V
Temperature Coefficient of Output Voltage Drift	T_{CVO}	$I_{OUT} = 5\text{mA}$	$T_j = 25^\circ\text{C}$	-	-0.4	-	$\text{mV}/^\circ\text{C}$
Peak Output Current	I_{PK}		$T_j = 25^\circ\text{C}$	-	2.1	-	A

* Pulse testing techniques are used to maintain the junction temperature as close to the ambient temperature as possible. Thermal effects must be taken into separately.

** This specification applies only for dc power dissipation permitted by absolute maximum ratings.

Electrical Characteristics

($T_j = 0$ to 125°C , $V_{in} = -19\text{V}$, $I_{out} = 500\text{mA}$, unless otherwise specified.)

Characteristic	Symbol	Test Condition*		S7912PI			Unit
				Min.	Typ.	Max.	
Output Voltage**	V_{OUT}		$T_j = 25^\circ\text{C}$	-12.5	-12.0	-11.5	V
		$I_{OUT} = 5\text{mA} \sim 1\text{A}$, $V_{IN} = -27\text{V} \sim -14.5\text{V}$		-12.6	-12.0	-11.4	
Line Regulation	ΔV_{OUT}	$V_{IN} = -30\text{V} \sim -14.5\text{V}$	$T_j = 25^\circ\text{C}$	-	5	80	mV
		$V_{IN} = -22\text{V} \sim -16\text{V}$		-	3	30	
Load Regulation	ΔV_{OUT}	$I_{OUT} = 5\text{mA} \sim 1.0\text{A}$	$T_j = 25^\circ\text{C}$	-	15	200	mV
		$I_{OUT} = 250\text{mA} \sim 750\text{mA}$		-	5	75	
Quiescent Current	I_B		$T_j = 25^\circ\text{C}$	-	2.0	3.0	mA
Quiescent Current Change	ΔI_B	$V_{IN} = -30\text{V} \sim -14.5\text{V}$		-	0.04	0.5	mA
		$I_{OUT} = 5\text{mA} \sim 1\text{A}$		-	0.08	0.5	
Output Noise Voltage	V_N	$f = 10\text{Hz} \sim 100\text{KHz}$,	$T_j = 25^\circ\text{C}$	-	300	-	μV_{rms}
Ripple Rejection Ratio	RR	$f = 120\text{Hz}$, $V_{IN} = -25\text{V} \sim -15\text{V}$		54	60	-	dB
Dropout Voltage	V_D	$I_{OUT} = 1\text{A}$	$T_j = 25^\circ\text{C}$	-	2.0	-	V
Temperature Coefficient of Output Voltage Drift	T_{CVO}	$I_{OUT} = 5\text{mA}$	$T_j = 25^\circ\text{C}$	-	-0.8	-	$\text{mV}/^\circ\text{C}$
Peak Output Current	I_{PK}		$T_j = 25^\circ\text{C}$	-	2.1	-	A

* Pulse testing techniques are used to maintain the junction temperature as close to the ambient temperature as possible. Thermal effects must be taken into separately.

** This specification applies only for dc power dissipation permitted by absolute maximum ratings.

Electrical Characteristics

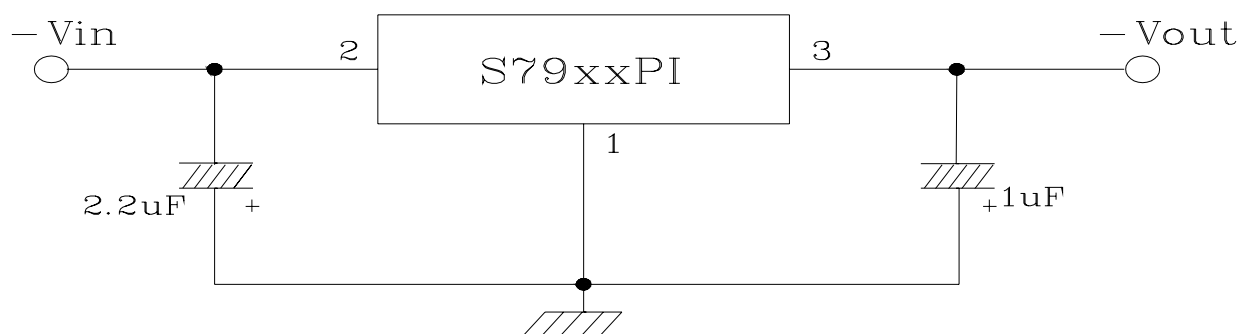
($T_j = 0$ to 125°C , $V_{in} = -23\text{V}$, $I_{out} = 500\text{mA}$, unless otherwise specified.)

Characteristic	Symbol	Test Condition*		S7915PI			Unit
				Min.	Typ.	Max.	
Output Voltage**	V_{OUT}		$T_j = 25^\circ\text{C}$	-15.6	-15.0	-14.4	V
		$I_{OUT} = 5\text{mA} \sim 1\text{A}$, $V_{IN} = -30\text{V} \sim -17.5\text{V}$		-15.75	-15.0	-14.25	
Line Regulation	ΔV_{OUT}	$V_{IN} = -30\text{V} \sim -17.5\text{V}$	$T_j = 25^\circ\text{C}$	-	5	100	mV
		$V_{IN} = -26\text{V} \sim -20\text{V}$		-	3	50	
Load Regulation	ΔV_{OUT}	$I_{OUT} = 5\text{mA} \sim 1.0\text{A}$	$T_j = 25^\circ\text{C}$	-	15	200	mV
		$I_{OUT} = 250\text{mA} \sim 750\text{mA}$		-	5	75	
Quiescent Current	I_B		$T_j = 25^\circ\text{C}$	-	2.0	3.0	mA
Quiescent Current Change	ΔI_B	$V_{IN} = -30\text{V} \sim -17.5\text{V}$		-	0.04	0.5	mA
		$I_{OUT} = 5\text{mA} \sim 1\text{A}$		-	0.08	0.5	
Output Noise Voltage	V_N	$f = 10\text{Hz} \sim 100\text{KHz}$,	$T_j = 25^\circ\text{C}$	-	375	-	μV_{rms}
Ripple Rejection Ratio	RR	$f = 120\text{Hz}$, $V_{IN} = -28.5\text{V} \sim -18.5\text{V}$		54	60	-	dB
Dropout Voltage	V_D	$I_{OUT} = 1\text{A}$	$T_j = 25^\circ\text{C}$	-	2.0	-	V
Temperature Coefficient of Output Voltage Drift	T_{CVO}	$I_{OUT} = 5\text{mA}$	$T_j = 25^\circ\text{C}$	-	-1.0	-	$\text{mV}/^\circ\text{C}$
Peak Output Current	I_{PK}		$T_j = 25^\circ\text{C}$	-	2.1	-	A

* Pulse testing techniques are used to maintain the junction temperature as close to the ambient temperature as possible. Thermal effects must be taken into separately.

** This specification applies only for dc power dissipation permitted by absolute maximum ratings.

■ Test circuit



Electrical Characteristic Curves

Fig. 1 $V_{OUT} - V_{IN}$

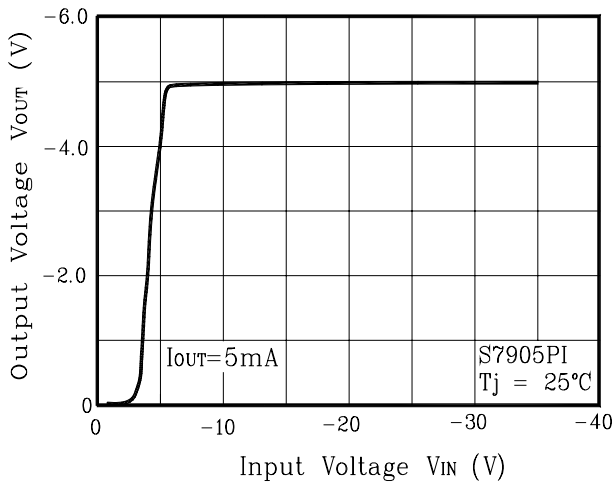


Fig. 2 $V_{DROP} - T_a$

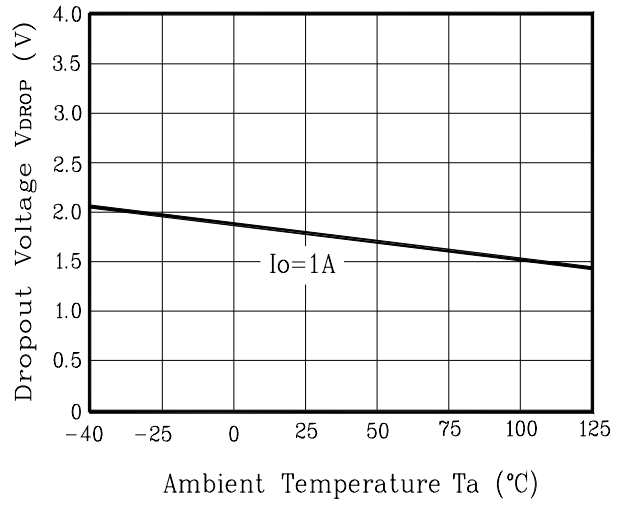


Fig. 3 $I_B - T_j$

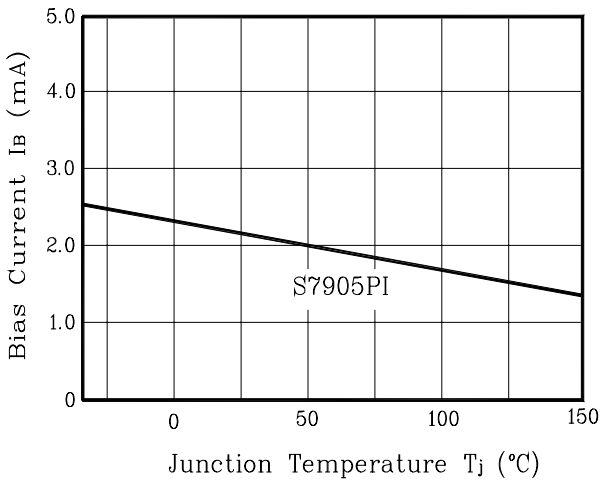


Fig. 4 $V_{OUT} - T_j$

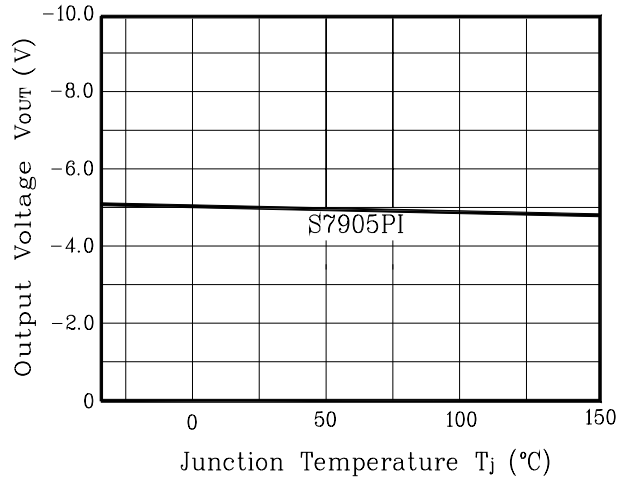
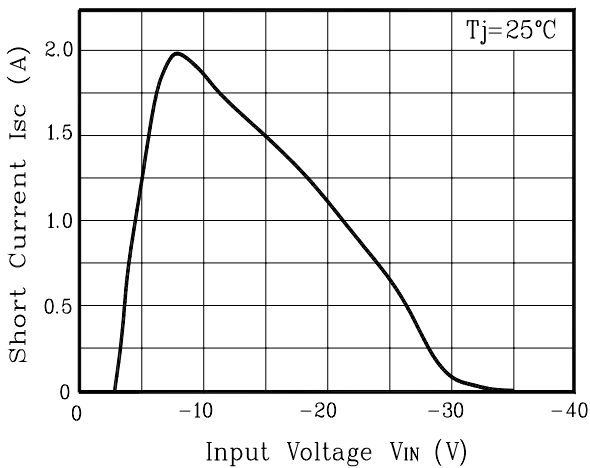


Fig. 5 $I_{SC} - V_{IN}$



The AUK Corp. products are intended for the use as components in general electronic equipment (Office and communication equipment, measuring equipment, home appliance, etc.).

Please make sure that you consult with us before you use these AUK Corp. products in equipments which require high quality and / or reliability, and in equipments which could have major impact to the welfare of human life(atomic energy control, airplane, spaceship, transportation, combustion control, all types of safety device, etc.). AUK Corp. cannot accept liability to any damage which may occur in case these AUK Corp. products were used in the mentioned equipments without prior consultation with AUK Corp..

Specifications mentioned in this publication are subject to change without notice.