



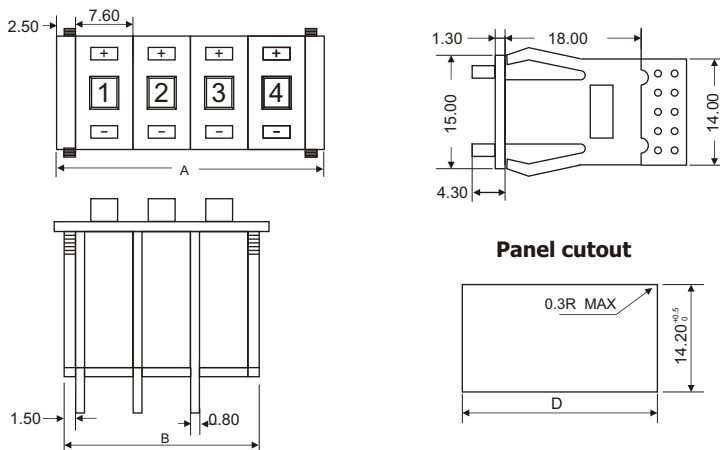
## SPECIFICATIONS

### RATINGS/CHARACTERISTICS

Switching capacity	1mA to 0.1A 50 VAC/28 VDC (resistive load)
Carry current	1A max.
Contact resistance	200mΩ max.
Insulation resistance	10MΩ min. (At 250 VDC) between nonconnected terminals 100MΩ min (At 250 VDC) between each terminal and noncurrent-carrying part
Dielectric strength	250 VAC, 50/60Hz for 1 minute between nonconnected terminals 1,000 VAC, 50/60Hz for 1 minute between each terminal and noncurrent-carrying part
Operating force	450g max.
Vibration	10 to 55Hz, 1.5mm double amplitude
Shock	490m/s <sup>2</sup> (approx. 50g's)
Ambient temperature	Operating: -10 to +65° C; Storage: -20 to +80° C
Humidity	45 to 85% RH max.
Service life	Mechanically: 30,000 operations (steps) min. Electrically: 20,000 operations (steps) min.
Weight (per unit)	Approx. 2g

## DIMENSIONS (Unless otherwise specified, a tolerance of ±0.4mm applies to all dimensions.)

### SWITCH UNITS (Each model number applies to a single switch unit and does not apply to the switch assembly as shown in the drawings.)

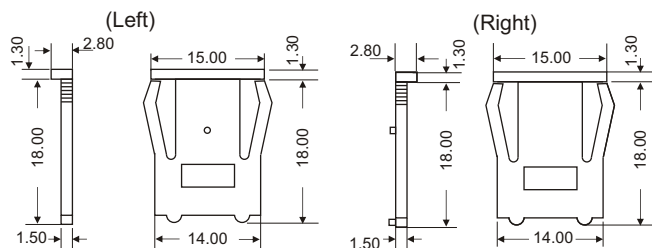


No. of units (N)	A (Nx7.6+5)	B (Nx7.6+3)	D
1	12.6	10.6	11
2	20.2	18.2	18.6
3	27.8	25.8	26.2
4	35.4	33.4	33.8
5	43±0.8	41±0.8	41.8
6	50.6±0.8	48.6±0.8	49.4
7	58.2±0.8	56.2±0.8	57
8	65.8±0.8	63.8±0.8	64.6
9	73.4±0.8	71.4±0.8	72.2
10	81±0.8	79±0.8	79.8

### END CAPS

End caps are attached to each end of the switch assembly and used to secure the switch assembly to a mounting panel.

### KSA-5/01





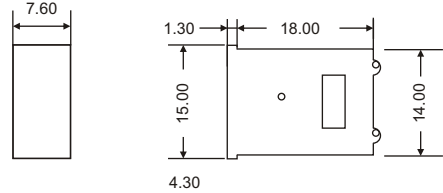
# Model KSA-5

# CODED SWITCHES

## SPACERS

One of alphabetic codes must be suffixed to the model number to specify a legend to be hot stamped on the required spacer

Code	Legend	Code	Legend	Code	Legend
A	Hot stamp not required	F	Kg	L	PCS
B	SEC	G	mm	P	day
C	MIN	H	cm	Q	X10SEC
D	H	J	m	T	0
E	g	K	C	U	.



## OUTPUT CODES

**01** BCD 0-9; 1-2-4-8.10 POSITION

**02** BCD 0-5; 1-2-4. 10 POSITION

**03** SPDT REPEATING; 10 POSITION ZERO (0) AND FIVE (1) ALTERNATING

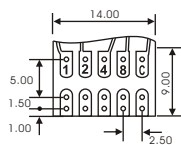
Dial Position	Common C Connected to Terminals = ●			
	C	1	2	4 8
0	●			
1	●	●		
2	●		●	
3	●	●	●	
4	●			●
5	●	●		●
6	●		●	●
7	●	●	●	
8	●			●
9	●	●		●

Dial Position	Common C Connected to Terminals →		
	C	4	2 1
0	●		
1	●		●
2	●		●
3	●		●
4	●	●	
5	●	●	
4	●	●	
3	●		●
2	●		●
1	●		●

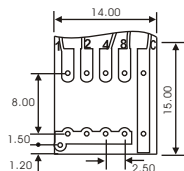
Dial Position	Common C Connected to Terminals = ●	
	C	0 1
0	●	●
1	●	●
0	●	●
1	●	●
0	●	●
1	●	●
0	●	●
1	●	●
0	●	●
1	●	●

## TERMINALS

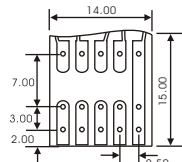
### KSA-5/A



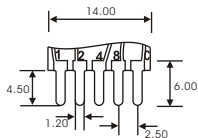
### KSA-5/B



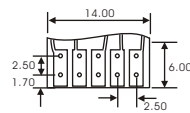
### KSA-5/C



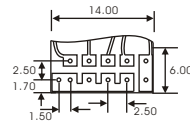
### KSA-5/D



### KSA-5/E

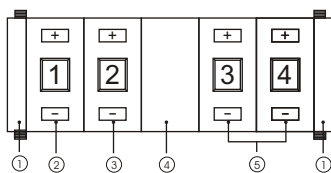


### KSA-5/F



## ORDERING INFORMATION

When placing your order, specify the desired type and the required quantity using the example below as reference.



- ① KSA-5(mounting plate).....One pair
- ② KSA-5(Switch unit stopper pins)..... 1
- ③ KSA-5(switch unit)..... 1
- ④ KSA-5(spacer)..... 1
- ⑤ KSA-5(switch unit)..... 2

NOTE: The switch unit, mounting plate, etc., of standard products are not factory-assembled for shipment. Consult WANDA on how to order assembled products.

NOTE: ALL DIMENSIONS SHOWN IN THIS CATALOG ARE IN UNITS OF MILLIMETERS.

