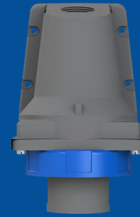


216EBS6W

# Wall mounted inlet

## 2CMA101166R1000



Wall mounted inlet, 2P+E, 16A, 200 ... 250 V Clock Position  
Of Grounding Contact 6 hour Color code Blue, Housing in  
plastic (PA). Cable gland included. Cable area 1...2.5 mm<sup>2</sup>

## GENERAL

<b>Product Name</b>	Wall mounted inlet
<b>Product ID</b>	2CMA101166R1000
<b>Function</b>	Wall mounted inlet
<b>EAN</b>	73926911662
<b>Catalog Description</b>	Wall mounted inlets, 2P+E, 16A, 200 ... 250 V
<b>Country of Origin</b>	Czech Republic (CZ)
<b>E-Number Finland</b>	2420140
<b>E-Number Norway</b>	1540732
<b>E-Number Sweden</b>	E2417327
<b>Standards</b>	IEC 60309-1, -2
<b>RoHS Status</b>	Following EU Directive 2011/65/EU

## DIMENSIONS

<b>Product Net Width</b>	89 millimetre
<b>Product Net Height</b>	111 millimetre
<b>Product Net Length</b>	135 millimetre
<b>Product Net Depth</b>	135 millimetre
<b>Product Net Weight</b>	0.20 kilogram

## TECHNICAL

<b>Product Main Type</b>	EBS
<b>Color</b>	Blue
<b>Number of Poles</b>	3
<b>Clock Position</b>	6Hour
<b>Rated Current</b>	16 ampere
<b>Rated Voltage</b>	200 ... 250 volt
<b>Frequency</b>	50 hertz 60 hertz
<b>Degree of Protection</b>	IP67
<b>Cable Cross-Section</b>	1...2.5 mm <sup>2</sup>
<b>Housing Material</b>	Plastic (PA)
<b>Plug Angle</b>	Angled
<b>Product Group</b>	Easy&Safe

## PACKAGING

<b>Package Width</b>	134 millimetre
<b>Package Height</b>	467 millimetre
<b>Package Gross Weight</b>	1 kilogram
<b>Package Length</b>	177 millimetre
<b>Package Units</b>	box 5 piece