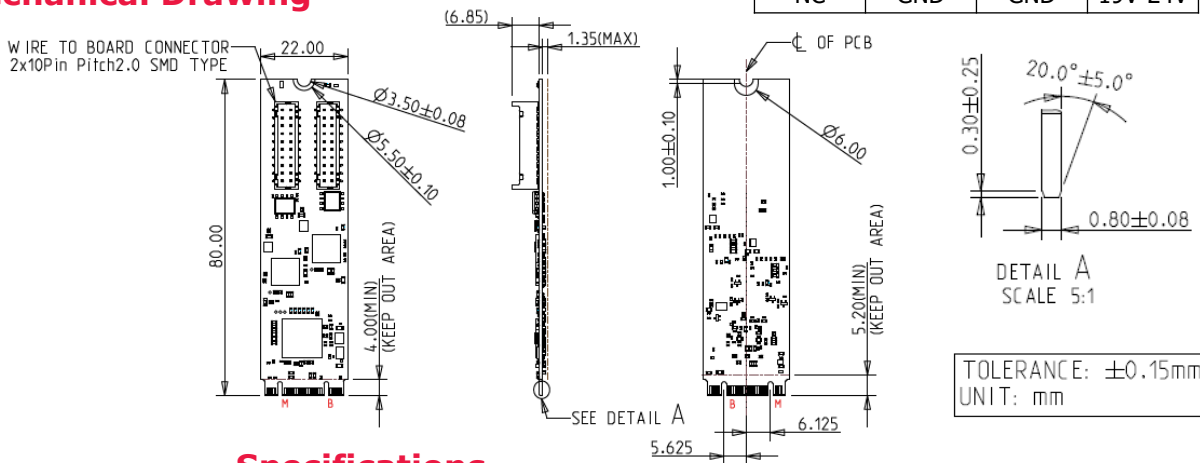


### Features

- Supports dual GbE LAN ports
- Two independent PSE channels
- Supports 19V~24V ( $\pm 5\%$ ) power input via 4pin header
- Complies with IEEE 802.3at, up to 25.5W at 52V per PoE port.
- Complies with EN61000-4-2 (ESD) Air-15kV, Contact-8kV
- Optional terminal mounting hole or bracket for daughter board
- Optional Industrial Temperature ( $-40^{\circ}\text{C}$  to  $+85^{\circ}\text{C}$ ) support
- $30\mu$  " golden finger, 3-year warranty
- Industrial design, manufactured in innodisk Taiwan

### Mechanical Drawing



### Specifications

#### Headquarters (Taiwan)

5F., No.237, Sec. 1, Datong Rd.,  
Xizhi Dist., New Taipei City 221,  
Taiwan

Tel: +886-2-7703-3000  
Email: sales@innodisk.com

#### Branch Offices:

##### USA

usasales@innodisk.com  
+1-510-770-9421

##### Europe

eusales@innodisk.com  
+31-040-3045-400

##### Japan

jpsales@innodisk.com  
+81-3-6667-0161

##### China

sales\_cn@innodisk.com  
+86-755-2167-3689

#### www.innodisk.com

© 2022 Innodisk Corporation.  
All right reserved. Specifications  
are subject to change without  
prior notice.

December 27, 2022

Form-Factor	M.2 2280 B-M
Input I/F	PCI Express 2.1 x 1
Output I/F	PoE x 2
Output Connector	RJ45 x 2
Power Consumption	LAN: MAX: 2.9W (3.3V, 892mA) PoE: MAX: 60W
Dimension (WxLxH)	Main Board: 22 x 80 x 9 mm Daughter Board: 72.7 x 58.2 x 23.8 mm
Temperature	Operation: STD: $0^{\circ}\text{C}$ ~ $+70^{\circ}\text{C}$ . W/T: $-40^{\circ}\text{C}$ ~ $+85^{\circ}\text{C}$ Storage: $-55^{\circ}\text{C}$ ~ $+95^{\circ}\text{C}$
Environment	Vibration: 5G @7~2000Hz, Shock: 50G @ 0.5ms
Notes	Please download driver from Intel official website. Windows: 10 (64bit), Linux (igc): kernel 5.x version
Limitations	*Linux kernel rebuild is needed (modify igc driver) if version < 5.15 *Not recommend used in VMware ESXi due to High Latency *Not support Intel vPro

### Order information

**EGPL-G2P4-C1 (Mounting hole, 4pin header, Standard Temp.)**

**EGPL-G2P4-W1 (Mounting hole, 4pin header, Wide Temp.)**

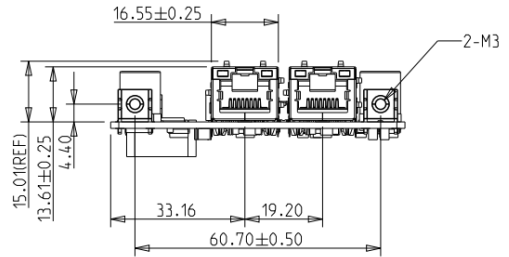
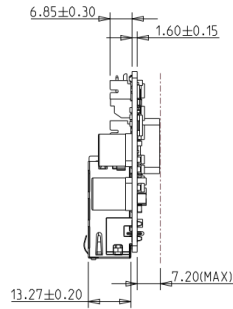
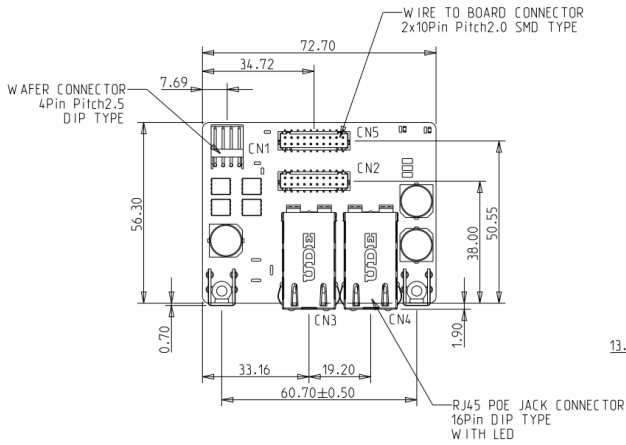
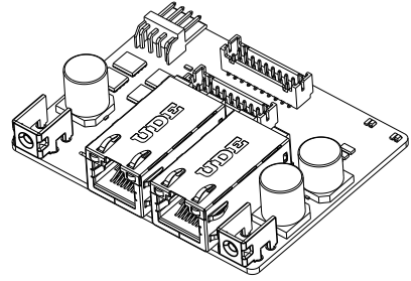
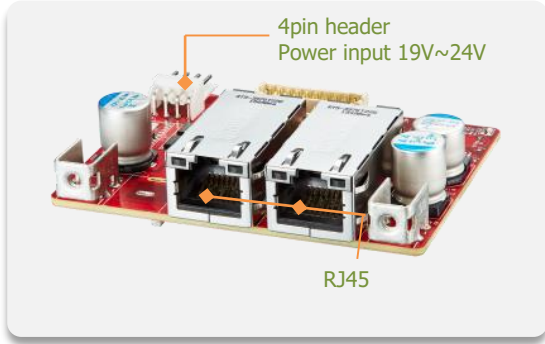
**EGPL-G2P4-C2 (Bracket, 4pin header, Standard Temp.)**

**EGPL-G2P4-W2 (Bracket, 4pin header, Wide Temp.)**

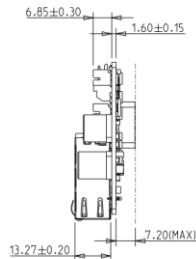
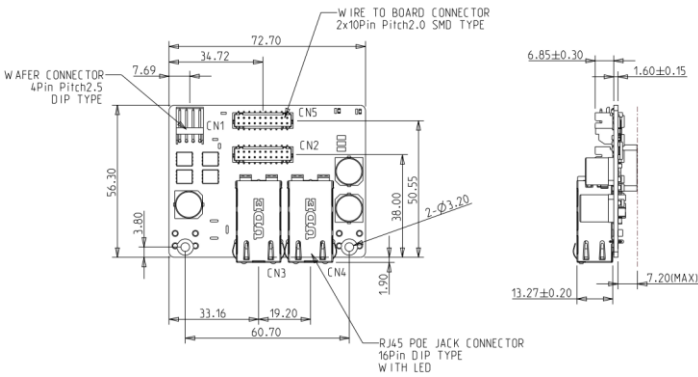
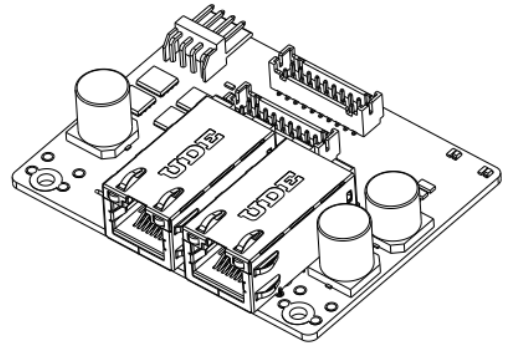
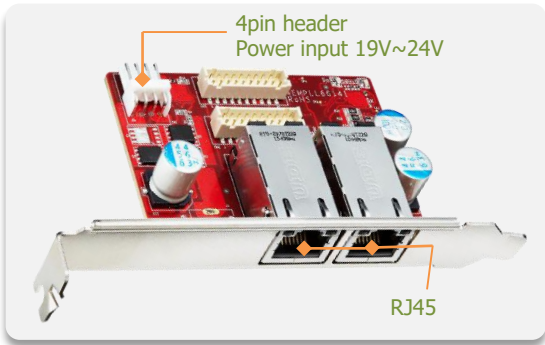
M.2 2280 to dual PoE+ module

www.innodisk.com

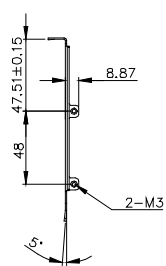
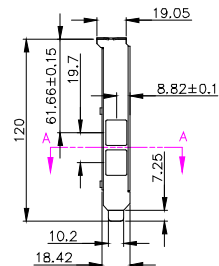
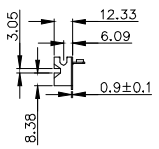
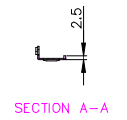
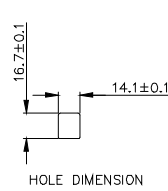
# EGPL-G2P4-C1/W1 Daughter Board and Mechanical Drawing



# EGPL-G2P4-C2/W2 Daughter Board and Mechanical Drawing



## Bracket



TOLERANCE: ±0.20mm