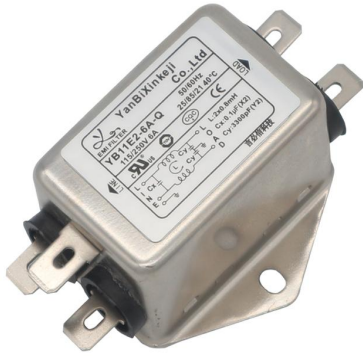


Single phase filters YB11E 系列



- Rated currents from 1 to 10A
额定电流1~10A
- General purpose filtering performance
通用滤波性能
- Optional medical versions((R5) type)
医疗设备专用 (R5) 系列

Approvals(认证):



Technical Data 技术参数

Rated Voltage Max.(最大电压):	250VAC,50/60Hz
Operating frequency(工作频率):	DC to 400Hz
Rated currents(额定电流):	1~10A@40°C
Hipot Rating (耐电压):	L-N 1450VDC L/N-G 2000VAC/2250VDC
Climatic category(气候类别)	-25°C~+85°C(25/85/21)
Design corresponding to(设计标准):	UL1283, CSA C22.2 No.8, IEC/EN 60939, CQC GB 15288/GB 15287-2008
Flammability corresponding to(防火等级):	UL 94V-0

Electrical schematic 电路图

Standard type

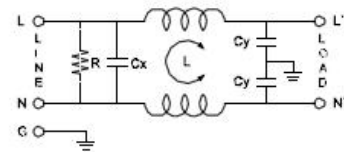


Fig.1

R5 type

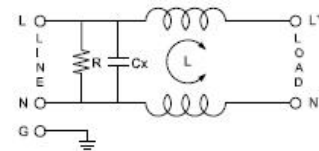


Fig.2

Features 产品特点

The compact size can be applied to various situations.

--紧凑的体积，能够应用在各种场合中。

YB11 filters are also available as two-stage filters(YB35) in noisy environment

--YB11系列滤波器也可以串2个当做YB35系列产品使用在嘈杂环境中。

There are a variety of parts and combinations to meet different customer's EMC tests

--有多种零件组合搭配，来满足不同客户整机EMC测试

Customized products according to customer's requirements

--可按客户要求定制不同规格产品

Typical Applications 应用范围

Electrical and electronic equipment

--电子电气设备

Medical equipment

--医疗设备




Datacom equipment

--通讯设备




Rule of Nomination 命名原则


YB 11 E1 - 1A - Q (R 5 G)
 : 电路 : 外壳 : : 电流 : : 输出方式 : : :
 Electrical Dimensions Current Output Optional 可选的
 Schematic


Product Tabulates 产品列表

Model No. 型号	Rated Current @40°C 额定电流	Terminal Options* 输出方式			Bleeder resistor(optional) 泄放电阻R(可选)	Leakage current 250V/50Hz漏 电流	Electrical Schematic 电路图	Rated Voltage(V) 额定电压	Operating Frequency(Hz) 工作频率
									
YB11E1-1A	1A	Q	-	W	-	<0.8mA	115/250V	50/60Hz	
YB11E1-3A	3A	Q	-	W	-				
YB11E1-6A	6A	Q	-	W	-				
YB11E1-8A	8A	Q	-	W	-				
YB11E1-10A	10A	Q	-	W	-				
YB11E2-1A	1A	-	-	W	-				
YB11E2-3A	3A	-	-	W	-				
YB11E2-6A	6A	-	-	W	-				
YB11E2-8A	8A	-	-	W	-				
YB11E2-10A	10A	-	-	W	-				
YB11E3-1A	1A	Q	-	W	-				
YB11E3-3A	3A	Q	-	W	-				
YB11E3-6A	6A	Q	-	W	-				
YB11E3-8A	8A	Q	-	W	-				
YB11E3-10A	10A	Q	-	W	-				

医疗专用产品 Medical Version

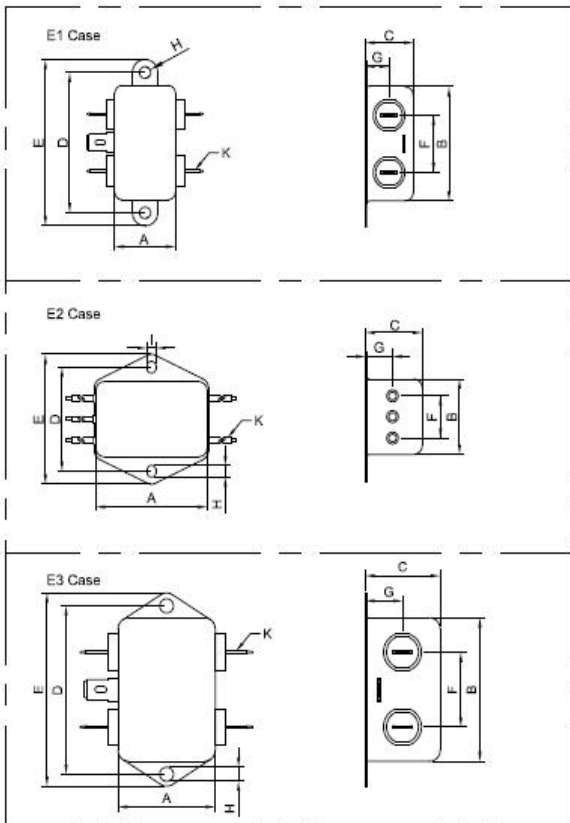
Model No. 型号	Rated Current @40°C 额定电流	Terminal Options 输出方式			Bleeder resistor(optional) 泄放电阻R(MΩ)	Medical equipment 医疗专用 5	Leakage current 250V/50Hz 漏电流	Electrical Schematic 电路图	Rated Voltage(V) 额定电压	Operating Frequency(Hz) 工作频率
										
YB11E1-1A-x(5)	1A	Q	-	W	1	5	<5μA	115/250V	50/60Hz	
YB11E1-3A-x(5)	3A	Q	-	W	1	5				
YB11E1-6A-x(5)	6A	Q	-	W	1	5				
YB11E1-8A-x(5)	8A	Q	-	W	1	5				
YB11E1-10A-x(5)	10A	Q	-	W	1	5				
YB11E2-1A-x(5)	1A	-	-	W	1	5				
YB11E2-3A-x(5)	3A	-	-	W	1	5				
YB11E2-6A-x(5)	6A	-	-	W	1	5				
YB11E2-8A-x(5)	8A	-	-	W	1	5				
YB11E2-10A-x(5)	10A	-	-	W	1	5				
YB11E3-1A-x(5)	1A	Q	-	W	1	5				
YB11E3-3A-x(5)	3A	Q	-	W	1	5				
YB11E3-6A-x(5)	6A	Q	-	W	1	5				
YB11E3-8A-x(5)	8A	Q	-	W	1	5				
YB11E3-10A-x(5)	10A	Q	-	W	1	5				

 *Q: Fast-on 6.35x0.8mm

 S: Screw lug

 W: UL1015 18awg

Mechanical Dimension外形图(Unit: mm)



Case	A	B	C	D	E	F	G	H	I	J	K
E1	24	45	19	54.5	64.5	23	9.5	4.5			6.3*0.8
E2	44	29	22	40	50	15	8	4.5	3.5		UL1015
E3	32	46	22.5	54	62	24	12.5	4.5			6.3*0.8
Tolerances 公差	±1	±1	±1	±0.15	±1	±0.5	±0.5	±0.15	±0.15		±0.15

Insertion loss table(In 50ohm system according IEC/CISPR No.17)插入损耗(50欧姆测试系统, IEC/CISPR No.17)

