

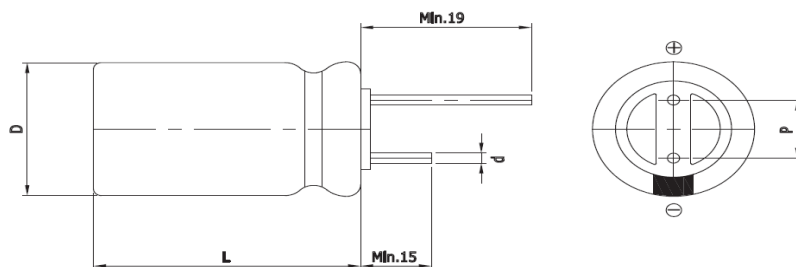
Features

EDLC (Electric Double Layer Capacitor)

- High Power Density
- Over 500,000 cycle life (semi-permanent)
- Higher energy density compared with 2.7V caps
- RoHS compliant
- Long-term reliability improved at high temperature and humidity



Drawing



D (Φ)	16.0 +1.0 Max
L (mm)	25.0 ±1.5
d (Φ)	0.8 ±0.1
P (mm)	7.5 ±0.5

Specification

Item		Characteristics						
Product series		EDLC						
Rated Voltage (V _R)		3.0V						
Operating Temperature		-40 ~ +65°C						
Capacitance Tolerance		-10 ~ +30%						
High Temperature Load Life		After 1,000 hours at V _R loaded under +65°C, capacitors meet the following criteria.						
		Capacitance Change		≤ 30% of initial value				
		ESR		≤ 2 times of specified value				
		85°C Temperature		Max. 2.4V				
Cycle Life Characteristics	Cycle	Over 500,000						
	ΔC	≤ 30% of initial value						
	ESR	≤ 2 times of specified value						
	Method	Cycle of Charge/discharge from V _R to 1/2V _R						
Shelf Life		3 Years No Electrical Charge, Temperature below 25°C (ΔC : ≤ 10% of initial value / ΔESR : ≤ 50% of specified value)						
Part Number	Rated Voltage (V)	Capacitance (F)	ESR (mΩ)		Max. Current (A)	Leakage Current (mA, 72hr)		Size (mm) D x L
			AC(1kHz)	DC		@2.7V	@3.0V	
WEC 3R0 256 QG	3.0	25	20	30	21.0	0.050	0.075	16 x 25

* Max. Current : 1 sec. discharge to 1/2V_R

Version 1.3 2021.02.01.