

SNAP-ON CONTACTS



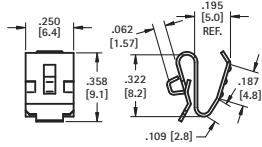
- Economical and reliable contacts are ideal for molded cases with self contained battery compartments
- Solder "ear" to facilitate soldering of wire lead
- Unique spring tension contact adjusts to variations in battery length
- Reliable spring tension contacts assure low contact resistance
- Clips easily onto .060 (1.52) to .070 (1.78) wall
- Sharp barbs securely anchor contact in place

Refer to page 42 for Battery Contact Layout & Mounting Details

"AAA" - "N" - "A23" - "A27"



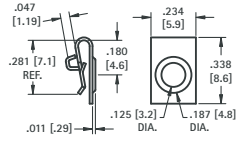
CAT. NO. 204



MATERIAL: .010 (.25) Spring Steel, Nickel Plate



CAT. NO. 238

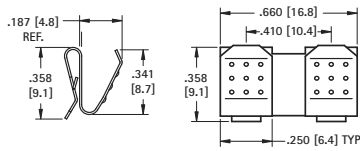


MATERIAL: .010 (.25) Stainless Steel, Nickel Plate

"AAA"



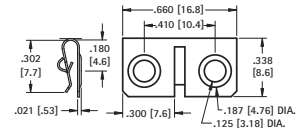
CAT. NO. 202



MATERIAL: .010 (.25) Spring Steel, Nickel Plate



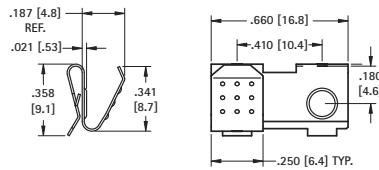
CAT. NO. 294



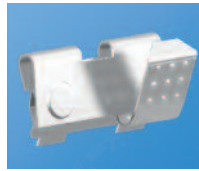
MATERIAL: .010 (.25) Stainless Steel, Nickel Plate



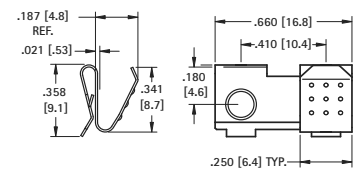
CAT. NO. 295



MATERIAL: .010 (.25) Spring Steel, Nickel Plate



CAT. NO. 296

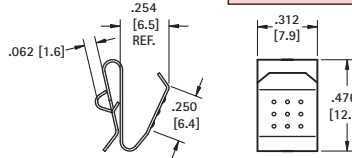


MATERIAL: .010 (.25) Spring Steel, Nickel Plate

"AA" - "CR2" - "A" - "17500" - "18350" - "18650"



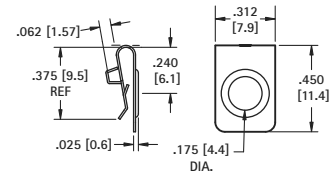
CAT. NO. 209



MATERIAL: .012 (.30) Spring Steel, Nickel Plate



CAT. NO. 228



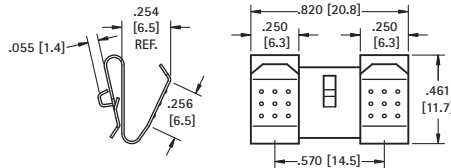
MATERIAL: .010 (.25) Stainless Steel, Nickel Plate

"AA"

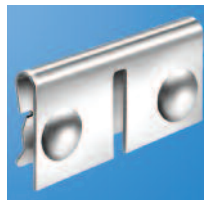


CAT. NO. 288

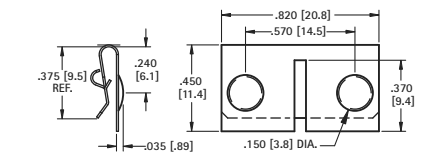
The (2) two leaf contacts are separate, allowing a divider between the batteries.



MATERIAL: .012 (.30) Spring Steel, Nickel Plate



CAT. NO. 292

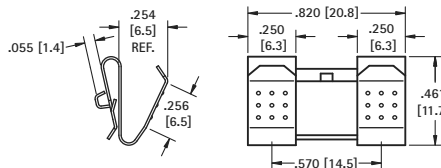


MATERIAL: .010 (.25) Stainless Steel, Nickel Plate



CAT. NO. 210

The (2) two leaf contacts are held together by a web. This design offers greater stability.

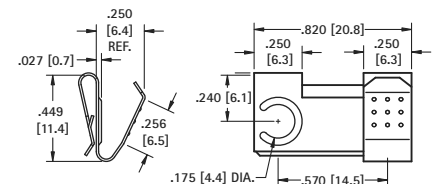


MATERIAL: .012 (.30) Spring Steel, Nickel Plate



CAT. NO. 291 Right

CAT. NO. 290 Left (shown)



MATERIAL: .012 (.30) Spring Steel, Nickel Plate