

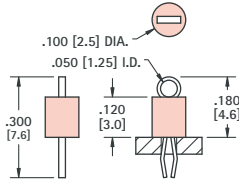
# (THM) THRU HOLE MOUNT TEST POINTS - COLOR KEYED

- Color keyed for visibility and quick identification
- Economical choice for PC test point terminations
- Snap-fit mounting provides positive retention for wave soldering
- Wire form loop for safe, non-slip testing
- Space saving, ultra low and low profile designs
- High profile design for difficult to reach applications
- Suitable for high density packaging on .062 (1.57) and .093 (2.36) PC boards
- Practical replacement for wire-wrap posts and turrets
- Secure grip for J hooks, EZ hooks, grabbers, alligator clips, tips or probes
- High temperature nylon base ideal for reflow soldering
- Ideal for reliable production testing and field service troubleshooting



## COLOR KEYED

### MINIATURE



#### SPECIFICATIONS

##### Terminal:

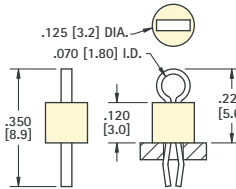
.010 (.25) x .020 (.51) Phosphor Bronze, Silver Plate

Base: Nylon 46, UL Rated 94V-0

Mtg. Hole: .040 (1.0) Diameter

CAT. NO.	BASE COLOR	CAT. NO.	BASE COLOR
5000	RED	5115	BROWN
5001	BLACK	5116	GREEN
5002	WHITE	5117	BLUE
5003	ORANGE	5118	GREY
5004	YELLOW	5119	PURPLE

### COMPACT



#### SPECIFICATIONS

##### Terminal:

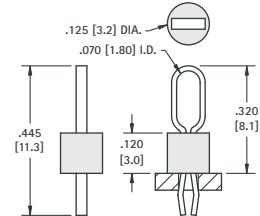
.015 (.38) x .032 (.81) Phosphor Bronze, Silver Plate

Base: Nylon 46, UL Rated 94V-0

Mtg. Hole: .063 (1.6) Diameter

CAT. NO.	BASE COLOR	CAT. NO.	BASE COLOR
5005	RED	5120	BROWN
5006	BLACK	5121	GREEN
5007	WHITE	5122	BLUE
5008	ORANGE	5123	GREY
5009	YELLOW	5124	PURPLE

### MULTIPURPOSE



#### SPECIFICATIONS

##### Terminal:

.015 (.38) x .032 (.81) Phosphor Bronze, Silver Plate

Base: Nylon 46, UL Rated 94V-0

Mtg. Hole: .063 (1.6) Diameter

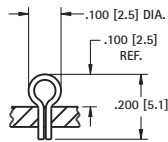
CAT. NO.	BASE COLOR	CAT. NO.	BASE COLOR
5010	RED	5125	BROWN
5011	BLACK	5126	GREEN
5012	WHITE	5127	BLUE
5013	ORANGE	5128	GREY
5014	YELLOW	5129	PURPLE

### ULTRA LOW PROFILE

**MATERIAL:** .017 (.43) Dia. Phosphor Bronze Silver Plate  
**Mtg Hole:** .040 (1.0)

**CAT. NO. 5021**

SHOWN AS INSTALLED INTO .040 [1.02] DIA. MOUNTING HOLE

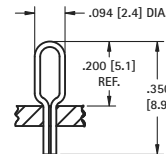


### LOW PROFILE

**MATERIAL:** .016 (.40) x .028 (.71) Phosphor Bronze Silver Plate  
**Mtg Hole:** .040 (1.0)

**CAT. NO. 5020**

SHOWN AS INSTALLED INTO .040 [1.02] DIA. MOUNTING HOLE

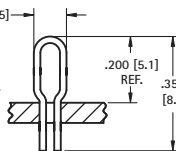


### STANDARD

**MATERIAL:** .020 (.50) Dia. Phosphor Bronze Silver Plate  
**Mtg Hole:** .073 (1.9)

**CAT. NO. 5023**

SHOWN AS INSTALLED INTO .067 [1.70] TO .078 [1.98] DIA. MOUNTING HOLE

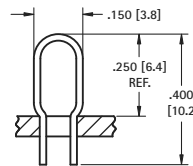


### LARGE

**MATERIAL:** .020 (.50) Dia. Phosphor Bronze Silver Plate  
**Mtg Hole:** .114 (2.9)

**CAT. NO. 5024**

SHOWN AS INSTALLED INTO .112 [2.84] TO .116 [2.95] DIA. MOUNTING HOLE



## ALLIGATOR CLIPS

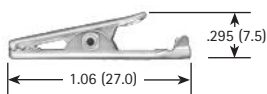


- Solder connection with strain relief
- Insulated or non-insulated
- Large clip also accepts standard banana plug

**MATERIAL:** Clip: Steel, Nickel Plate; Insulator: Vinyl



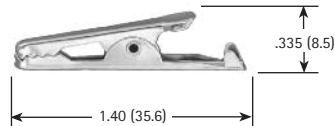
### SMALL CLIP



CAT. NO.	INSULATOR COLOR
5033	NONE
5034	RED
5035	BLACK
5036	GREEN
5037	YELLOW

**JAW SPREAD**  
.236 (6.0) max.

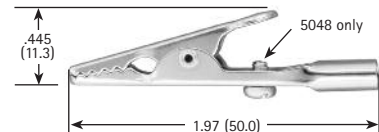
### MEDIUM CLIP



CAT. NO.	INSULATOR COLOR
5038	NONE
5039	RED
5040	BLACK

**JAW SPREAD**  
.236 (6.0) max.

### LARGE CLIP



CAT. NO.	INSULATOR COLOR
5044	NONE
5045	RED
5046	BLACK
5048*	NONE

**JAW SPREAD**  
.315 (8.0) max.

\*with screw