



Shipshape

Metal Panel

Key Characteristics

- No moving parts – completely sealed against the environment
- Enhanced touch activated - operation by hand, gloves or tools
- Switching functions - momentary, toggle, prolonged, continuous, timer and programmable
- Optional Smart Switch technology - self-diagnostic, Wi Fi, Bluetooth and IoT capabilities



Electrical Data

Operating Voltage	12 VDC only
Actuation Force	2-5 N
Leds	Internal Control SW Off - Blue Led On SW On - Red Led On
SW Function	Key 1-6 On/Off Toggle (On/Off), Momentary, Continuous, Programmable

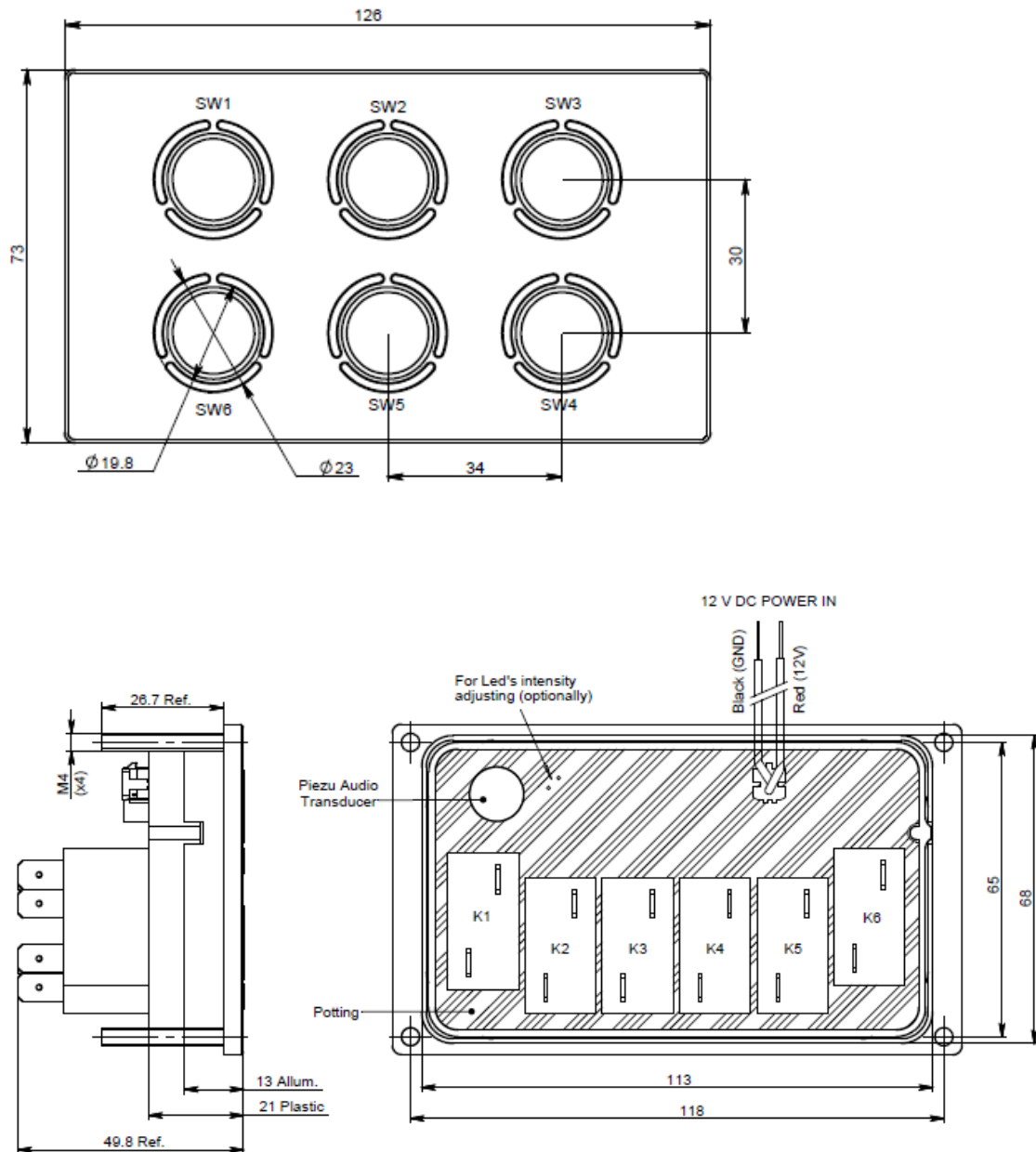
Mechanical Data

Housing Materials	Aluminum 6061 T651
Connection	2 Wires 22 AWG, Length 300mm
Relay Dry Contact	SPST, N.O.250Vac @ 20A
Finish: Anodize Color	Black Anodize & Laser Engraving

Environmental Data

Operating Temperature	-20°C to +75°C
Storage Temperature	-40°C to +85°C
IP Protection	IP68K

Mechanical Drawing



*The specifications, descriptions and illustrations indicated in this document are based on current information. All content is subject to modifications and amendments. Users should evaluate the suitability and test each product selected for their own applications.