

General Description

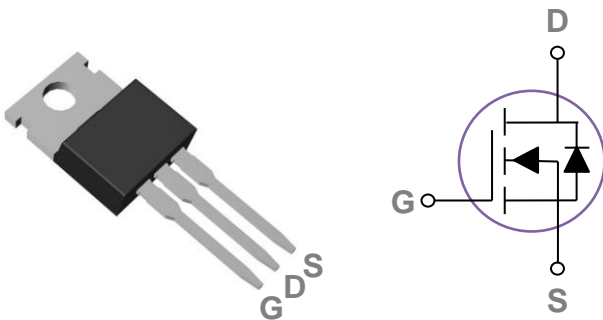
These N-Channel enhancement mode power field effect transistors are using trench DMOS technology. This advanced technology has been especially tailored to minimize on-state resistance, provide superior switching performance, and withstand high energy pulse in the avalanche and commutation mode. These devices are well suited for high efficiency fast switching applications.

BVDSS	RDSON	ID
30V	3.1mΩ	150A

Features

- 30V, 150A, $R_{DS(ON)} = 3.1m\Omega @ V_{GS} = 10V$
- Improved dv/dt capability
- Fast switching
- 100% EAS Guaranteed
- Green Device Available

TO220 Pin Configuration



Applications

- Networking
- Load Switch
- LED applications
- Quick Charger

Absolute Maximum Ratings $T_c=25^\circ\text{C}$ unless otherwise noted

Symbol	Parameter	Rating	Units
V_{DS}	Drain-Source Voltage	30	V
V_{GS}	Gate-Source Voltage	± 20	V
I_D	Drain Current – Continuous ($T_c=25^\circ\text{C}$)	150	A
	Drain Current – Continuous ($T_c=100^\circ\text{C}$)	95	A
I_{DM}	Drain Current – Pulsed ¹	600	A
EAS	Single Pulse Avalanche Energy ²	231	mJ
IAS	Single Pulse Avalanche Current ²	68	A
P_D	Power Dissipation ($T_c=25^\circ\text{C}$)	152	W
	Power Dissipation – Derate above 25°C	1.2	W/ $^\circ\text{C}$
T_{STG}	Storage Temperature Range	-55 to 150	$^\circ\text{C}$
T_J	Operating Junction Temperature Range	-55 to 150	$^\circ\text{C}$

Thermal Characteristics

Symbol	Parameter	Typ.	Max.	Unit
$R_{\theta JA}$	Thermal Resistance Junction to ambient	---	62	$^\circ\text{C}/\text{W}$
$R_{\theta JC}$	Thermal Resistance Junction to Case	---	0.8	$^\circ\text{C}/\text{W}$

Electrical Characteristics (T_J=25 °C, unless otherwise noted)
Off Characteristics

Symbol	Parameter	Conditions	Min.	Typ.	Max.	Unit
BV _{DSS}	Drain-Source Breakdown Voltage	V _{GS} =0V, I _D =250μA	30	---	---	V
I _{DSS}	Drain-Source Leakage Current	V _{DS} =30V, V _{GS} =0V, T _J =25°C	---	---	1	μA
		V _{DS} =24V, V _{GS} =0V, T _J =125°C	---	---	10	μA
I _{GSS(+)}	Gate-Source Leakage Current	V _{GS} =±20V, V _{DS} =0V	---	---	±100	nA

On Characteristics

R _{DS(ON)}	Static Drain-Source On-Resistance	V _{GS} =10V, I _D =30A	---	2.6	3.1	mΩ
R _{DS(ON)}	Static Drain-Source On-Resistance	V _{GS} =4.5V, I _D =30A	---	3.2	4.2	mΩ
V _{GS(th)}	Gate Threshold Voltage	V _{GS} =V _{DS} , I _D =250μA	1.2	1.5	2.5	V
g _{fs}	Forward Transconductance	V _{DS} =10V, I _D =10A	---	23	---	S

Dynamic and switching Characteristics

Q _g	Total Gate Charge ^{3, 4}	V _{DS} =15V, V _{GS} =10V, I _D =75A	---	60	90	nC
Q _{gs}	Gate-Source Charge ^{3, 4}		---	9	14	
Q _{gd}	Gate-Drain Charge ^{3, 4}		---	12	18	
T _{d(on)}	Turn-On Delay Time ^{3, 4}	V _{DD} =15V, V _{GS} =10V, R _G =6Ω I _D =75A	---	18	27	ns
T _r	Rise Time ^{3, 4}		---	25	38	
T _{d(off)}	Turn-Off Delay Time ^{3, 4}		---	64	96	
T _f	Fall Time ^{3, 4}		---	22	33	
C _{iss}	Input Capacitance	V _{DS} =15V, V _{GS} =0V, F=1MHz	---	3770	5660	pF
C _{oss}	Output Capacitance		---	565	850	
C _{rss}	Reverse Transfer Capacitance		---	390	590	
R _g	Gate resistance	V _{GS} =0V, V _{DS} =0V, F=1MHz	---	2	---	Ω

Drain-Source Diode Characteristics and Maximum Ratings

Symbol	Parameter	Conditions	Min.	Typ.	Max.	Unit
I _S	Continuous Source Current	V _G =V _D =0V, Force Current	---	---	150	A
I _{SM}	Pulsed Source Current		---	---	300	A
V _{SD}	Diode Forward Voltage	V _{GS} =0V, I _S =1A, T _J =25°C	---	---	1	V
T _{rr}	Reverse Recovery Time	V _{GS} =10V, I _S =10A,	---	140	---	ns
Q _{rr}	Reverse Recovery Charge	di/dt=100A/μs T _J =25°C	---	265	---	nC

Note :

1. Repetitive Rating : Pulsed width limited by maximum junction temperature.
2. V_{DD}=25V, V_{GS}=10V, L=0.1mH, I_{AS}=68A., R_G=25Ω, Starting T_J=25°C.
3. The data tested by pulsed, pulse width ≤ 300us, duty cycle ≤ 2%.
4. Essentially independent of operating temperature.

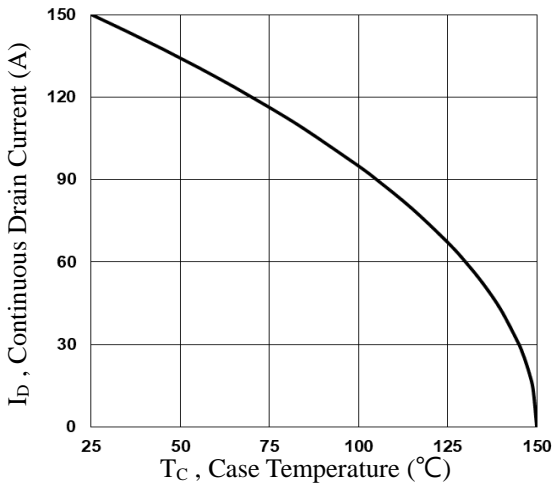


Fig.1 Continuous Drain Current vs. TC

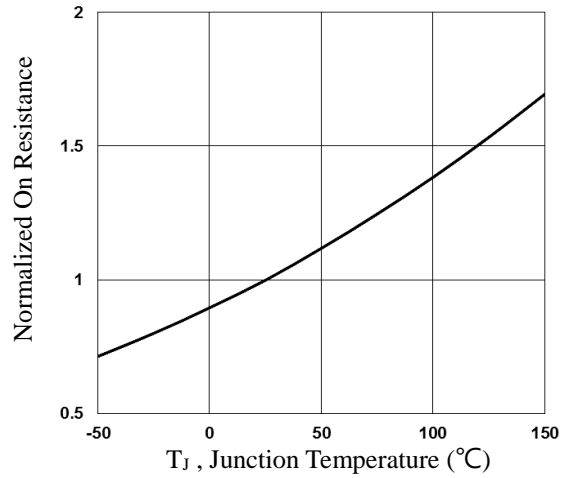


Fig.2 Normalized R_{DS(on)} vs. T_J

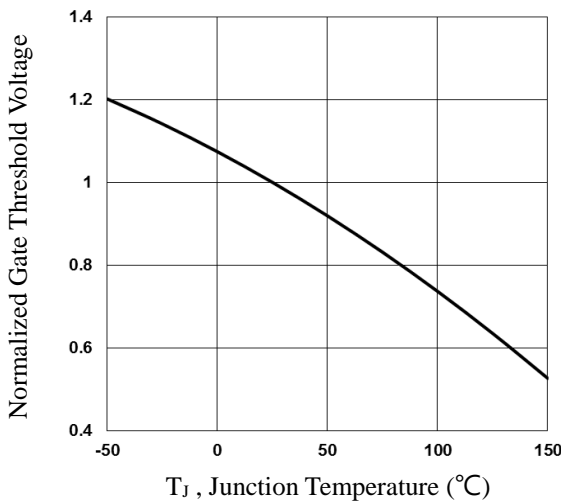


Fig.3 Normalized V_{th} vs. T_J

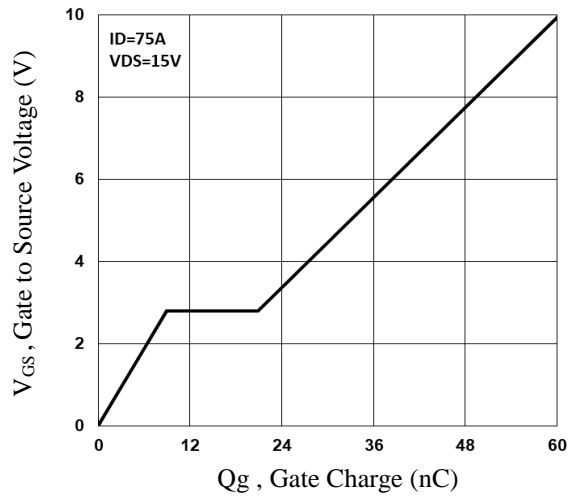


Fig.4 Gate Charge Characteristics

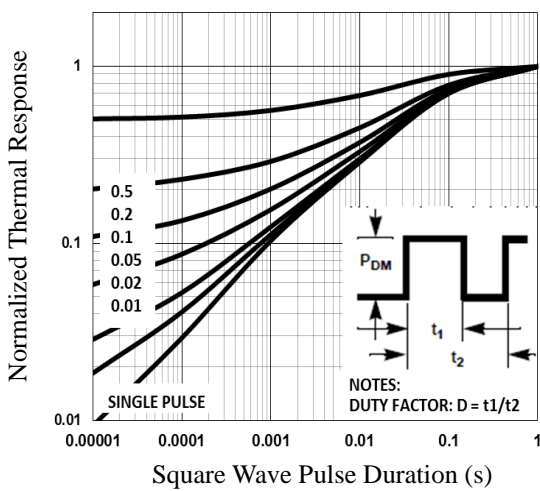


Fig.5 Normalized Transient Impedance

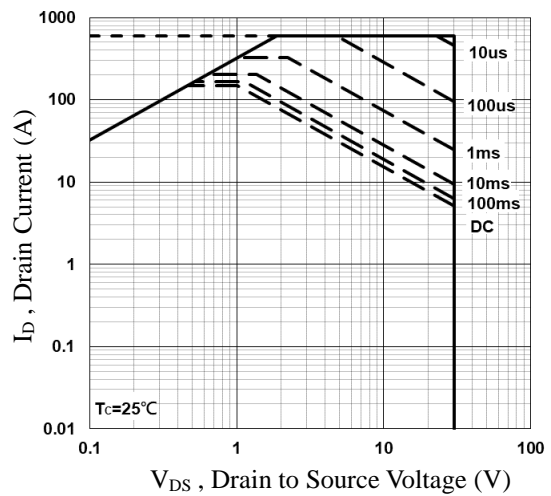


Fig.6 Maximum Safe Operation Area

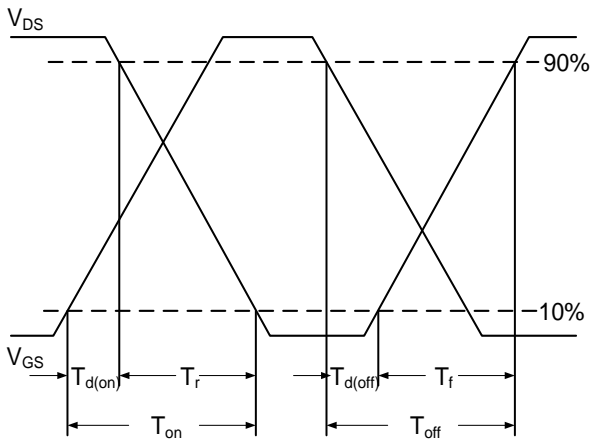


Fig.7 Switching Time Waveform

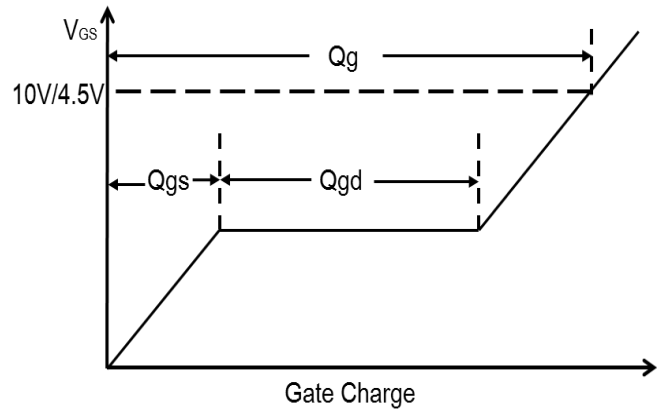
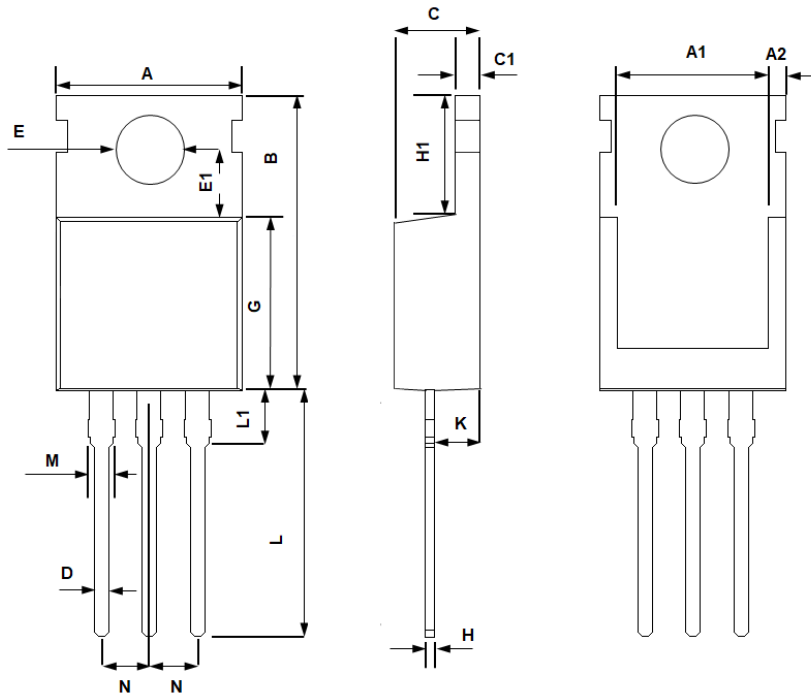


Fig.8 Gate Charge Waveform

TO220 PACKAGE INFORMATION



Symbol	Dimensions In Millimeters		Dimensions In Inches	
	MAX	MIN	MAX	MIN
A	10.400	9.700	0.409	0.382
A1	8.900	7.400	0.350	0.291
A2	1.400	0.800	0.055	0.031
B	16.500	14.500	0.650	0.571
C	4.750	4.200	0.187	0.165
C1	1.500	1.100	0.059	0.043
D	1.000	0.600	0.039	0.024
E	4.000	3.300	0.157	0.130
E1	3.800	3.400	0.150	0.134
G	9.400	8.400	0.370	0.331
H	0.600	0.200	0.024	0.008
H1	6.850	6.200	0.270	0.244
K	2.850	2.100	0.112	0.083
L	14.000	12.500	0.551	0.492
L1	4.000	2.700	0.157	0.106
M	1.750	1.100	0.069	0.043
N	2.640	2.440	0.104	0.096