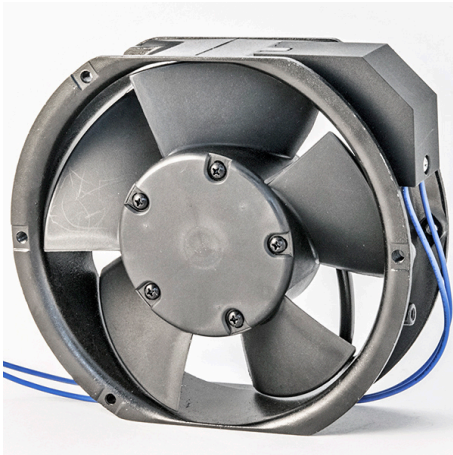


A

17251-DA

172x151x51mm(6.8"x5.9"x2")



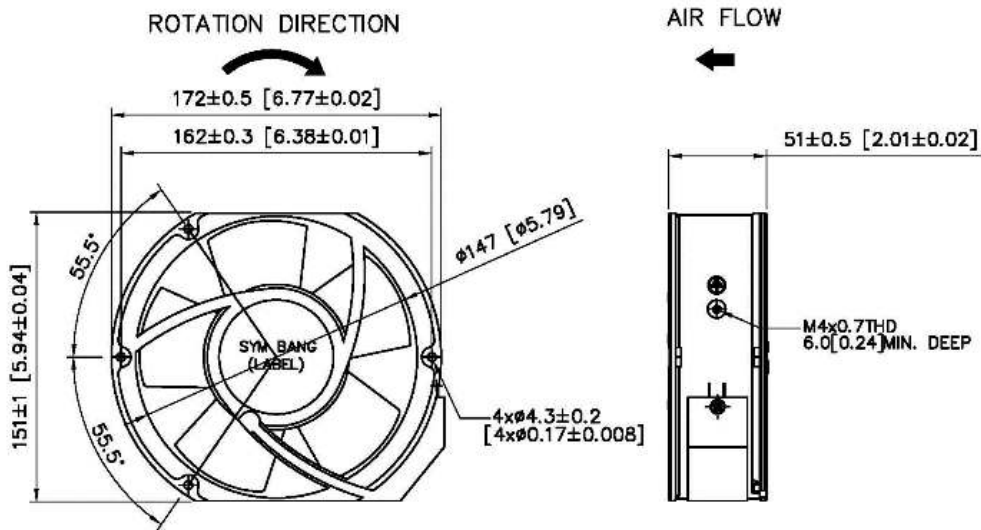
HOUSING	Aluminum Die Casting, Painted Black
IMPELLER	Thermoplastic PBT, UL94V-0
BEARING	Ball
OPERATING TEMPERATURE	-20°C to + 70°C
INSULATION	Class B
OPERATING VOLTAGE RANGE	104 VAC to 126 VAC for 115V Type 207 VAC to 253 VAC for 230V Type
DIELECTRIC STRENGTH	5mA Max. at 1800 VAC for 1 second
INSULATION RESISTANCE	10M Ω min. @500 VDC
MOTOR TYPE	Outer Rotor, AC Induction Capacitor Motor
SAFETY	Thermally Protected
TERMINATION	Terminals or Lead Wire
WEIGHT	1050 g
ROHS COMPLIANCE	Yes
IP LEVEL	IP54(Special IP Rating On Request)

172 mm

SPECIFICATION

MODEL NO.	RATED VOLTAGE(V)	RATED CURRENT(A)	INPUT POWER(W)	SPEED (RPM)	MAX. AIR PRESSURE		MAX. AIR FLOW		NOISE dB(A) @1M
					inchH2O	mmH2O	CFM	m3/min	
A17251V1SB-DA	115	0.28/0.24	27/27	2800/3300	0.64/0.78	16.5/20.0	230/270	6.5/7.64	55/61
A17251V1HB-DA	115	0.25/0.23	27/27	2650/3050	0.55/0.61	14/15.5	210/250	5.94/7.07	53/59
A17251V2SB-DA	230	0.11/0.12	24/27	2800/3300	0.64/0.78	16.5/20.0	230/270	6.5/7.64	55/61
A17251V2HB-DA	230	0.11/0.11	26/26	2650/3050	0.55/0.61	14/15.5	210/250	5.94/7.07	53/59

DIMENSION



UNIT: mm[inch]

SYMBANG

AIR PERFORMANCE

