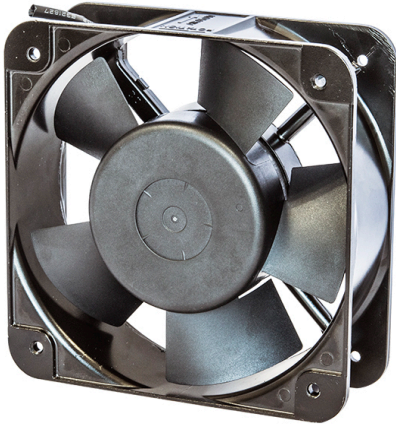


# A

# 15050-TJ

150x150x50 mm(5.91"x5.91"x1.97")



HOUSING	Aluminum Die Casting, Painted Black
IMPELLER	Thermoplastic PBT, UL94V-0
BEARING	Ball or Sleeve
OPERATING TEMPERATURE	-10°C to + 70°C
INSULATION	Class A
OPERATING VOLTAGE RANGE	85 VAC to 120 VAC for 110V Type 185 VAC to 240 VAC for 220V Type 285 VAC to 400 VAC for 380V Type
DIELECTRIC STRENGTH	5mA Max. at 1500 VAC for 1 second
INSULATION RESISTANCE	10M Ω min. @500 VDC
MOTOR TYPE	AC Induction Capacitor Motor
SAFETY	Impedance Protected
TERMINATION	Lead wire
WEIGHT	920 g
ROHS COMPLIANCE	Yes
IP LEVEL	IP21 (Special IP Rating On Request)

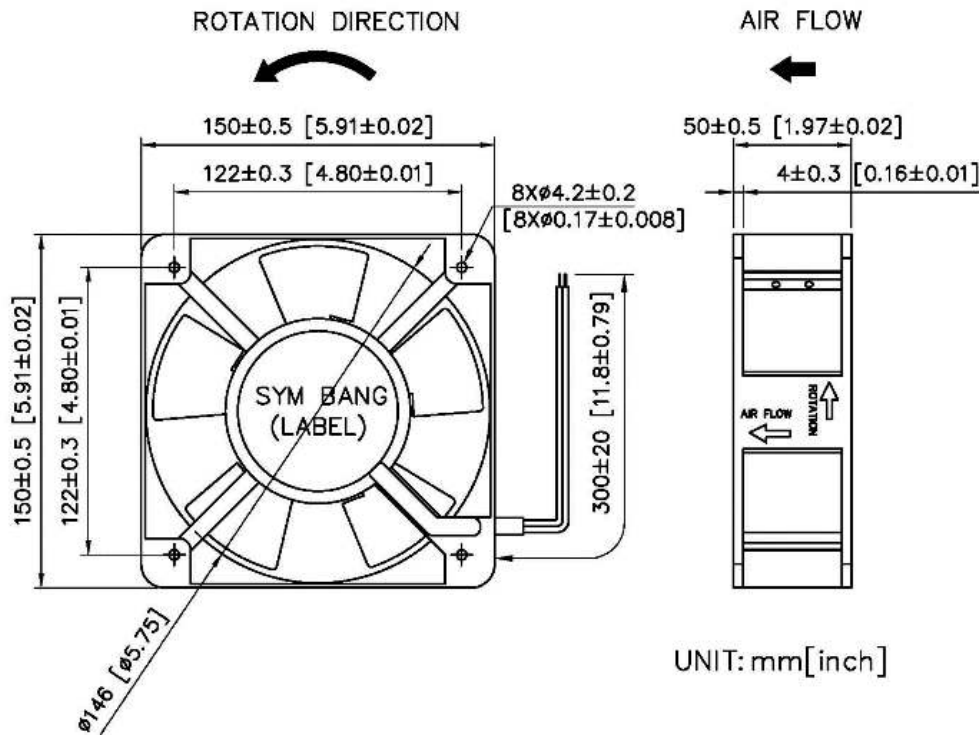
# 150

 mm

## SPECIFICATION

MODEL NO.	RATED VOLTAGE(V)	RATED CURRENT(A)	INPUT POWER(W)	SPEED (RPM)	MAX. AIR PRESSURE		MAX. AIR FLOW		NOISE dB(A) @1M
					inchH2O	mmH2O	CFM	m3/min	
A15050V3H-TJ	380	0.14/0.13	34/33	2600/2550	0.45/0.20	11.5/5.1	185/170	5.24/4.81	52/51
A15050V2H-TJ	220	0.25/0.22	36/34	2600/2600	0.45/0.20	11.5/5.1	185/170	5.24/4.81	52/52
A15050V1H-TJ	110	0.63/0.53	42/37	2600/2950	0.45/0.33	11.5/8.3	185/190	5.24/5.38	52/56

## DIMENSION



## AIR PERFORMANCE

