

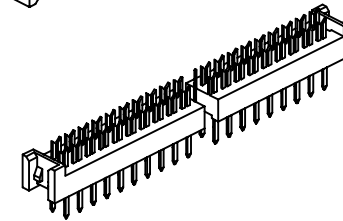
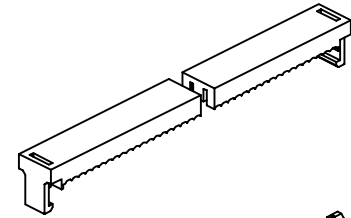
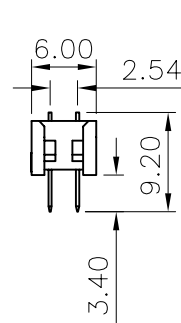
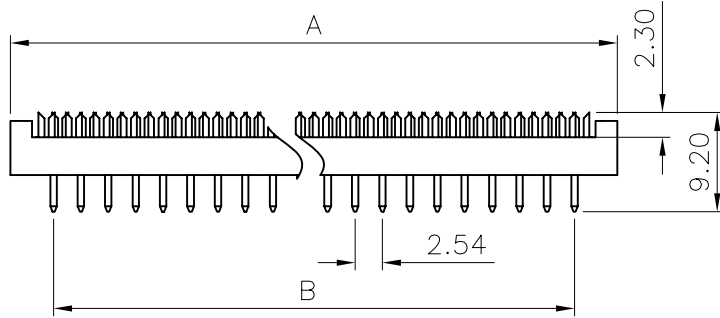
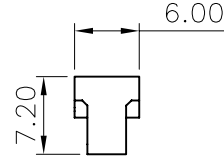
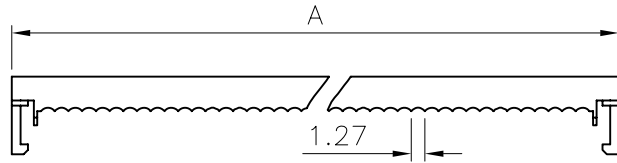
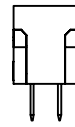
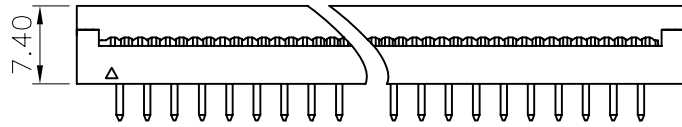
REV.	LOCAS.	DESCRIPTION	DATE	DRAWN
01	NEW	INITIAL RELEASE.	2012.09.03	張佳黛

Specifications

Current Rating: 1.0AMP
 Insulation Resistance: 1000MΩ Min
 Dielectric Withstanding: 500VAC
 Operating Temperature: -55°C to +105°C

Materials

Contact Material: Brass
 Insulation Material: High Temperature, Thermoplastic
 UL 94V-0 PBT or the equivalent material
 All materials must meet Greenconn requirement for environment protection



No. of PIN/ROW	Dimension Information	
	A	B
2*03	12.94	5.08
2*04	15.48	7.62
2*05	18.10	10.16
2*06	20.51	12.70
2*07	23.05	15.24
2*08	25.64	17.78
2*09	28.15	20.32
2*10	30.78	22.86
2*12	35.86	27.94
2*13	38.40	30.48
2*14	40.60	33.02
2*15	43.50	35.56
2*17	48.58	40.64
2*20	56.20	48.26
2*25	69.00	60.96
2*30	81.75	73.66
2*32	86.83	78.74
/	/	/
/	/	/

Ordering Information

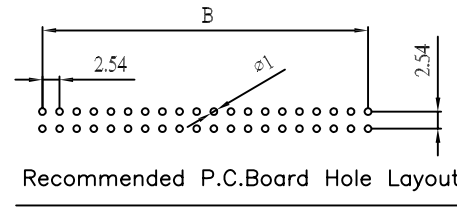
GQHA216 - XX XX A005 A 1 B X-1B

No. of Pins per Row
 3, 4, 5, 6, 7, 8, 9,
 10, 12, 13, 14, 15,
 17, 20, 25, 30, 32

Standard Plating
 70=Gold Flash/Ni
 Selective Plating
 01=Tin
 02=Gold Flash

Color
 1=Black

Standard Packing
 B=Tray
 Selective Packing
 A=Box



Recommended P.C.Board Hole Layout

格稜股份有限公司
Greenconn Corporation

GENERAL TOLERANCE

X.* ± 3.0*	X. ± 0.30
.X* ± 2.0*	.X ± 0.25
.XX* ± 1.0*	.XX ± 0.20
.XXX* ± 0.5*	.XXX ± /

DESIGN: 張佳黛

DATE: 2012.09.03

DWG. NO.
GQHA216-CA5AB

TITLE.

2.54 IDC
DIP Connector

REV.	UNIT.	SCALE.	PAGE.	
01	mm	1:1	1/1	

CHECKED: 朱振霆

DATE: 2012.09.03

PART NO.
GQHA216-XXXXA005A1BX-1B