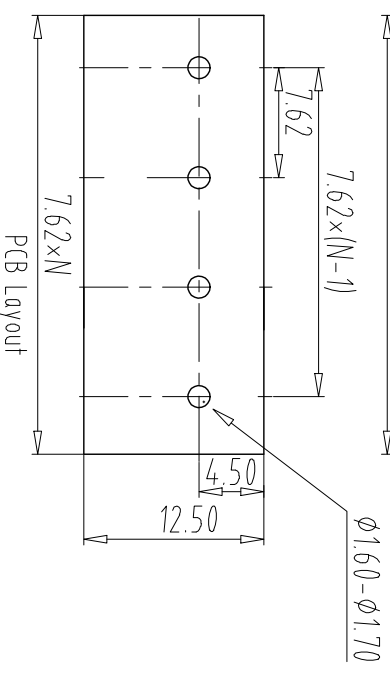
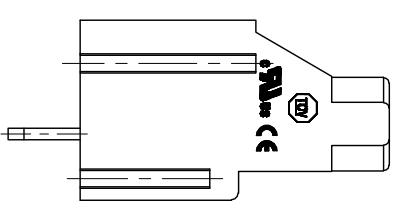
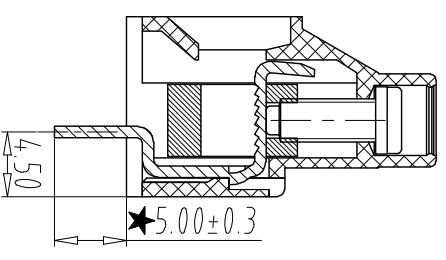
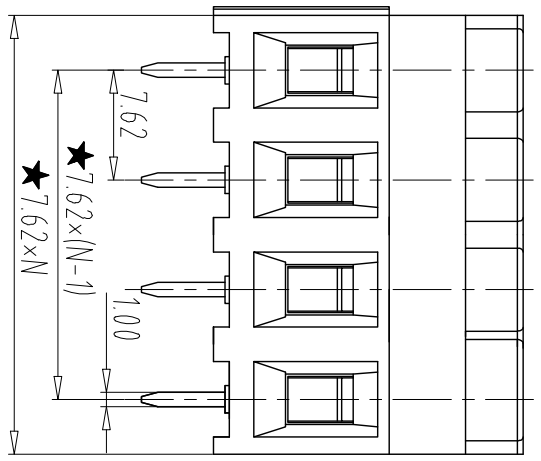
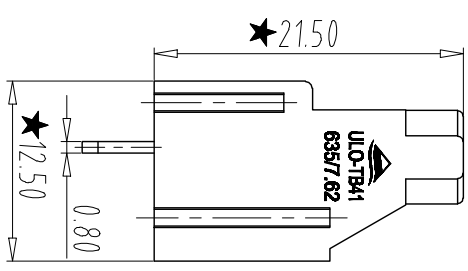
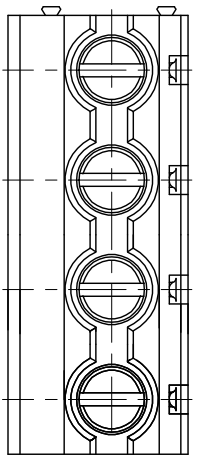


REV	ECN NO.	CONTENT	CHK	DATE
V0.0		初版成	ZCP	



PCB Layout

Total Pitch Tolerances		Nominal dimension range	
in mm		in mm	
0	30	0	30
30	53	53	70
53	70	70	90
70	90	90	115
90	115	115	150
115	150	150	200
150	200	200	250
200	250	250	300
250	300	300	0
300	0	0	30
0	30	30	53
30	53	53	70
53	70	70	90
70	90	90	115
90	115	115	150
115	150	150	200
150	200	200	250
200	250	250	300
250	300	300	0
300	0	0	10
0	10	10	all
10	all	all	0
all	0	0	100
0	100	100	150
100	150	150	0
150	0	0	0.2
0	0.2	0.2	0.3
0.2	0.3	0.3	0.3
0.3	0.3	0.3	0.2
0.3	0.2	0.2	0.3
0.2	0.3	0.3	//

- NOTES:
- Rating: 300V/30A <IEC> 630V/32A
 - Poles: 02-24P
 - Insulation Withstands Voltage: AC2000V/1 Min
 - Screw Torque Value: 0.5Nm
 - Insulation Resistance: 500MΩ at DC500V
 - Using Temperature Range: -40°C/+115°C
 - Suitable Electric Wire: 10-26AWG(UL), 0.5-4.0mm²(IEC);
 - Max soldering : +250° for 5S
 - RoHS Compliance.
 - With "*" "is important dimension
- How to order
UL0-TB41 - 635/7.62 - XYP -Y 0 0 0A

Certificate Series NO. Factory Code poles color: Customer requirements

- 1: Grey
- 2: Blue
- 3: Black
- 4: Green
- 5: Orange
- 6: Red
- 7: transparent
- 8: Yellow
- 9: white

4	SCREW	3160000009	N	STEEL	M3.0/Zn Plated
3	SOLDERPIN	3110000009	N	Brass	Tin Plated
2	BLOCK	3090000008	N	Brass	Ni Plated
1	HOUSING	4050000741	XX	PA66(V0)	/

ITEM	NAME OF PART	NO. OF PART	Q'TY	MATERIAL	NOTE
DWG.	DATE	18.10.16	MM	SHEET/OF	1/1
CHK.	DATE		SCALE	A4	
APP.	DATE		NAME	UL0-TB41-635/7.62-XP-Y000A	
NINGBO UL0 ELECTRONICS CO.,LTD.			DWGNO.	UL0TB41Y010A	

REV	ECN NO.	CONTENT	CHK	DATE
V0.0		初版成	ZCP	

ITEM	NAME OF PART	NO. OF PART	Q'TY	MATERIAL	NOTE
DWG.	DATE	18.10.16	MM	SHEET/OF	1/1
CHK.	DATE		SCALE	A4	
APP.	DATE		NAME	UL0-TB41-635/7.62-XP-Y000A	
NINGBO UL0 ELECTRONICS CO.,LTD.			DWGNO.	UL0TB41Y010A	