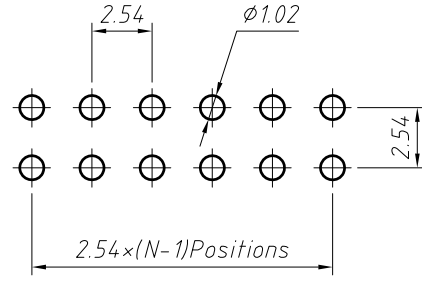
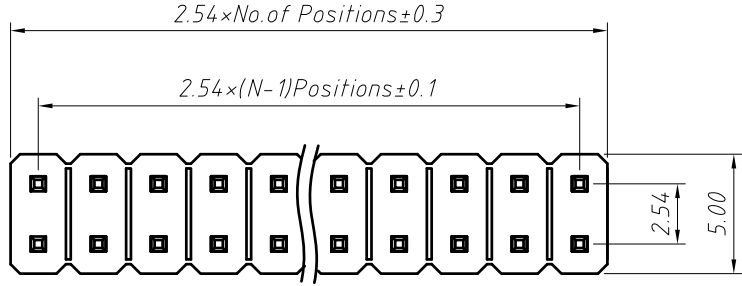


1
RoHS Compliance

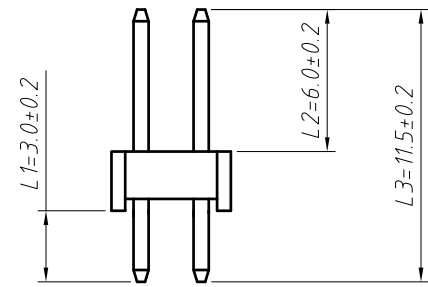
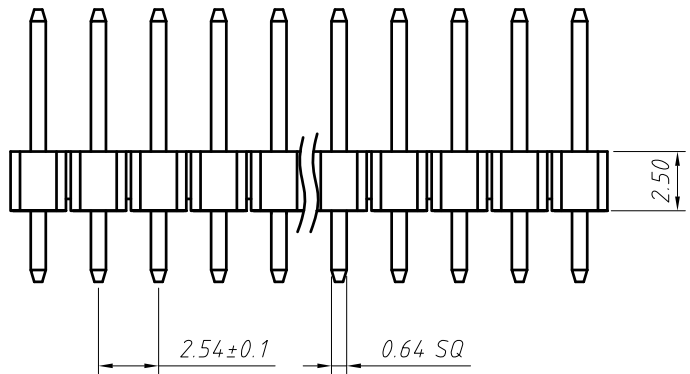


Recommended P.C.B Hole Layout

Material:
Standard: PA6T
Contact: Brass
Insulator: Polyester, UL 94 V-0

Electrical Characteristics:
Rated Current: 3AMP
Contact Resistance: 20mΩ Max
Withstand Voltage: 1000V AC/DC
Insulator Resistance: 1000MΩ Min

Mechanical
Operating Temperature: -40°C ~ +105°C



Dimension antitheses list (mm)

ITEM	L1	L2	L3	Plastic Height
Standard	3.00	6.00	11.5	2.50
Nonstandard	---	---	---	---

ANGLE TOLERANCE	PROJECTION	Description:	2.54mm Pin Header Dual Row, Straight Pin, 2xN Pin
±3°			
GENERAL TOLERANCE	UNITS	mm	CONN THERM
x.x ±0.30	SHEET SIZE	A4	
x.xx ±0.20	Draw:	2018-07-10	
x.xxx ±0.10	Check:	2018-07-10	