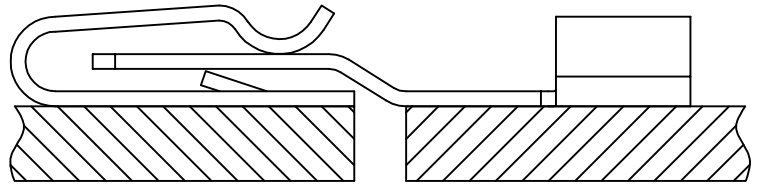
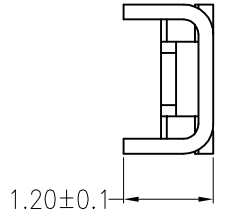
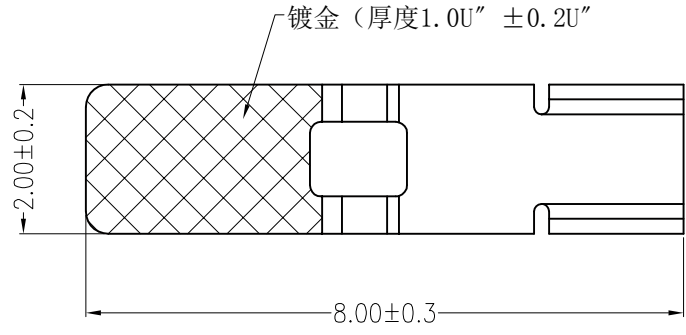


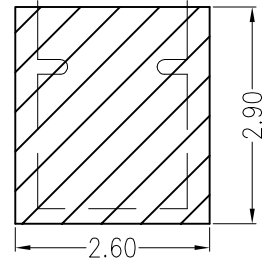
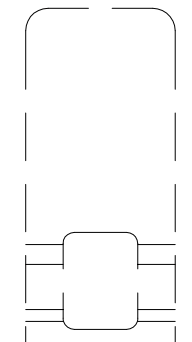
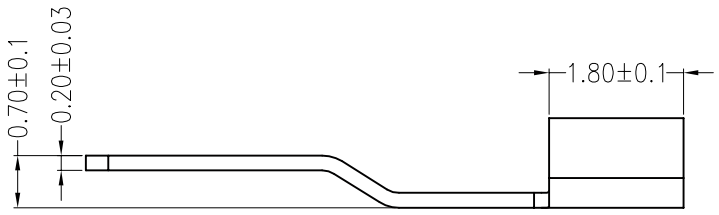
REV	DESCRIPTION	DESIGN	DATE
A0	Release		2016.04.30



Assembly Layout

Main Specifications

- Poles : 01
- Contact resistance : $\leq 20\text{m}\Omega$
- Insulation resistance : $\geq 800\text{M}\Omega$
- Rated voltage : 250V AC DC
- Rated current : 3A AC DC
- Withstand voltage : 1500V AC/minute
- Temperature Range : $-45^{\circ}\text{C} \text{ --- } +125^{\circ}\text{C}$



Board Layout

General Tolerance: ± 0.05



C					
B					
A	CONTACT	1 PCS	PhosphorBronze	Gold+Sn-plated	
ITEM	COMPONENT	Q'TY	MATERIAL	FINISH	
LEDsconn					TITLE: --
X.±0.5	X.±5'	USE: CUSTOMER		PART NO.:	
.X±0.3	.X±2'	APPD:		DWG NO.:	
.XX±0.25	.XX±1'	CHKD:		SCALE	
--	--	DR:		1 : 1	SHEET
UNITS: mm				1 / 1	