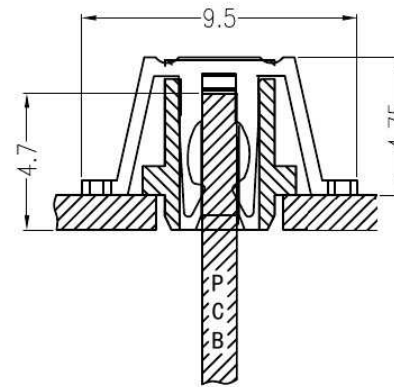
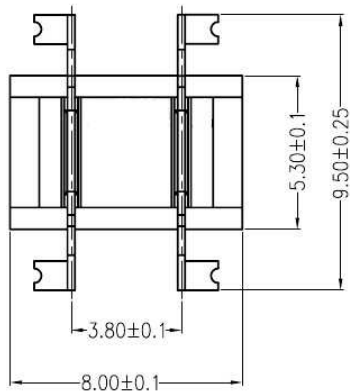
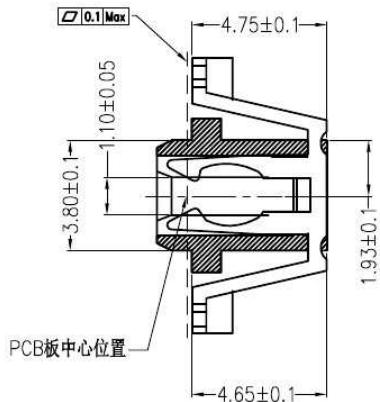
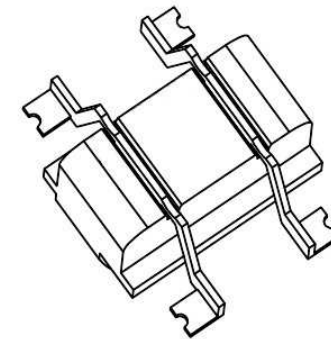


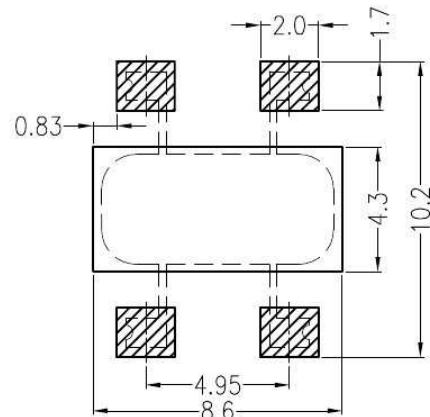
REV	DESCRIPTION	DESIGN	DATE
A0	Release		2015.09.19



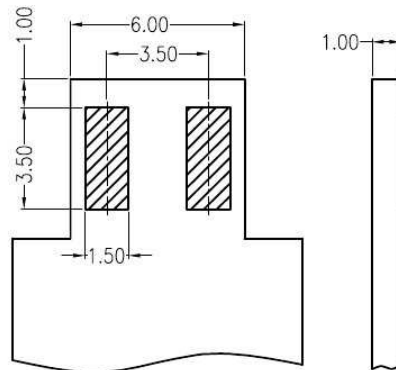
Assembly Layout



- Main Specifications**
 Thickness: 1.0mm
 Contact resistance: $\leq 20\text{m}\Omega$
 Insulation resistance: $\geq 1000\text{M}\Omega$
 Rated voltage: 250V AC DC
 Rated current: 1.0A AC DC
 Withstand Voltage: 1000V AC/minute
 Temperature Range: $-40^\circ\text{C} \text{ --- } +120^\circ\text{C}$



Board Layout



Mating PCB detail

ITEM	COMPONENT	Q'TY	MATERIAL	FINISH
C				
B	CONTACT	2 PCS	PhosphorBronze	MATTE Sn-plated
A	PEDESTAL	1 PCS	LCP	UL 94V-0, COLOR:BEIGE

LEDscconn			TITLE: -- 3.8mmPITCH 180°WAFER SMT TYPE	
X.±0.5	X.±5°	USE: CUSTOMER	PART NO.:	
.X±0.3	.X±2°	APPD:	DWG NO.:	
.XX±0.25	.XX±1°	CHKD:	SCALE	
---	---	DR:	1 : 1	SHEET 1 / 1
UNITS: mm				