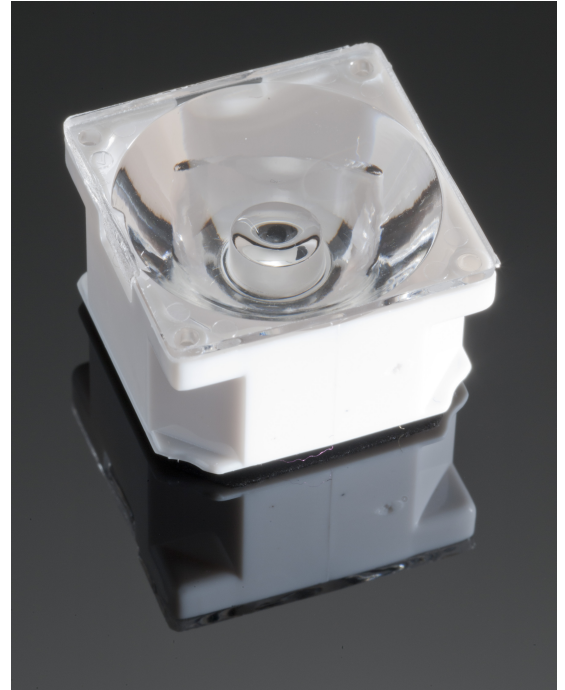


LAURA-RS-PIN

~8° spot beam optimized for CREE XP-E.
Assembly with white holder, installation tape
and location pins.

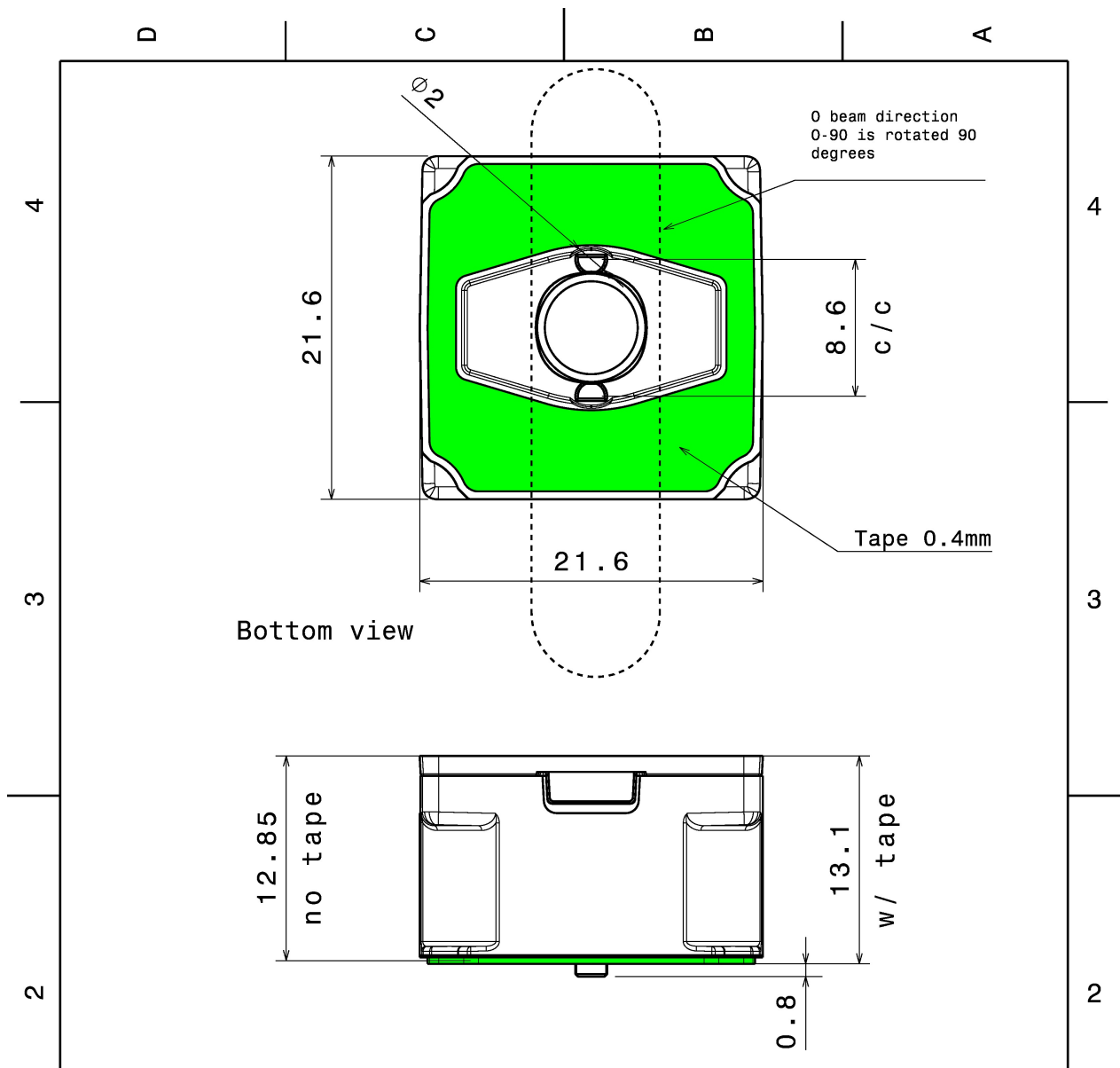
TECHNICAL SPECIFICATIONS:

Dimensions	21.6 mm
Height	13.1 mm
Fastening	tape, pin
Colour	white
Box size	
Box weight	7.6 kg
Quantity in Box	1440 pcs
ROHS compliant	yes ⓘ



MATERIAL SPECIFICATIONS:

Component	Type	Material	Colour
LAURA-RS	Single lens	PMMA	
LAURA-PIN-XP-HLD-WHT	Holder	PC	
ROSE-TAPE	Tape	PU tape	



Note: Pinless versions also available

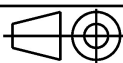
INDEX	DESCRIPTION	MATERIAL	COLOUR
1	LAURA-lens	PMMA	
2	LAURA-XP holder	PC	white/black

Tolerances if not otherwise shown
According to DIN ISO 2768-1
Linear measures:
up to 30mm class M, otherwise class C
According to DIN ISO 2768-2
Form and position: class L

LEDiL

Ledil Oy
Salorankatu 10
FIN 24240 SALO
Finland

THIRD ANGLE PROJECTION:



DRAWING TITLE

Laura-XP family datasheet

This drawing is the property of LEDiL Oy. It may not be reproduced, copied or communicated without a written agreement with LEDiL Oy.

SIZE PART NUMBER

A4

-

SCALE 1:1 WEIGHT

-

SHEET 1/1

PHOTOMETRIC DATA (MEASURED):

CREE

LED XP-E
FWHM 8.0°
Efficiency 93 %
Peak intensity 33.200 cd/lm
LEDs/each optic 1
Light colour White
Required components:

CREE

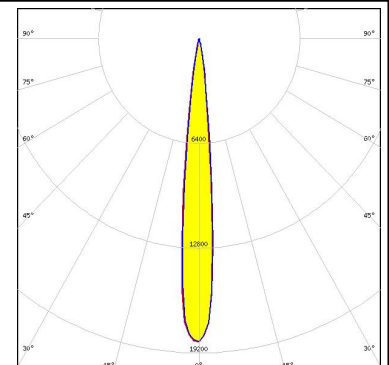
LED XP-G
FWHM 11.0°
Efficiency 93 %
Peak intensity cd/lm
LEDs/each optic 1
Light colour White
Required components:

LUMILEDS

LED LUXEON Rebel
FWHM 7.0°
Efficiency 93 %
Peak intensity 34.000 cd/lm
LEDs/each optic 1
Light colour White
Required components:

LUMILEDS

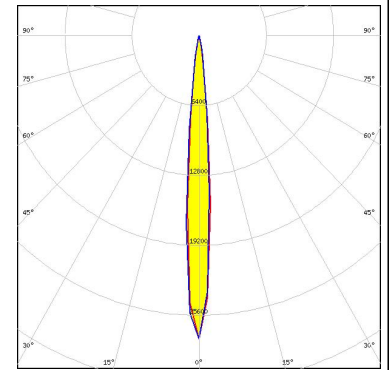
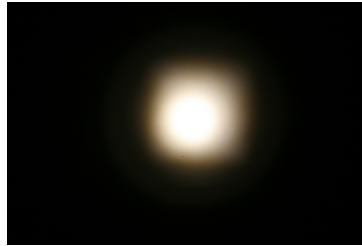
LED LUXEON T
FWHM 11.0°
Efficiency 92 %
Peak intensity 18.500 cd/lm
LEDs/each optic 1
Light colour White
Required components:



PHOTOMETRIC DATA (MEASURED):



LED NCSxx19B
 FWHM 10.0°
 Efficiency 91 %
 Peak intensity 27.800 cd/lm
 LEDs/each optic 1
 Light colour White
 Required components:



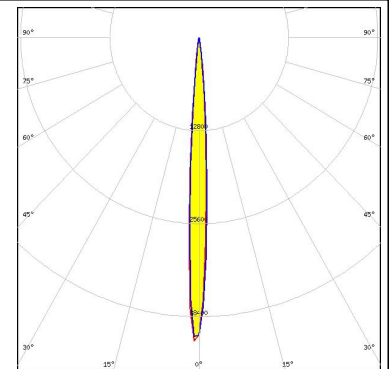
Osram Opto Semiconductors

LED OSOLON Square EC
 FWHM 9.0°
 Efficiency 93 %
 Peak intensity 20.000 cd/lm
 LEDs/each optic 1
 Light colour White
 Required components:



Osram Opto Semiconductors

LED OSOLON SSL 150
 FWHM 7.0°
 Efficiency 92 %
 Peak intensity 42.000 cd/lm
 LEDs/each optic 1
 Light colour White
 Required components:



Osram Opto Semiconductors

LED SFH 4725S
 FWHM 10.0°
 Efficiency %
 Peak intensity cd/lm
 LEDs/each optic 1
 Light colour White
 Required components: