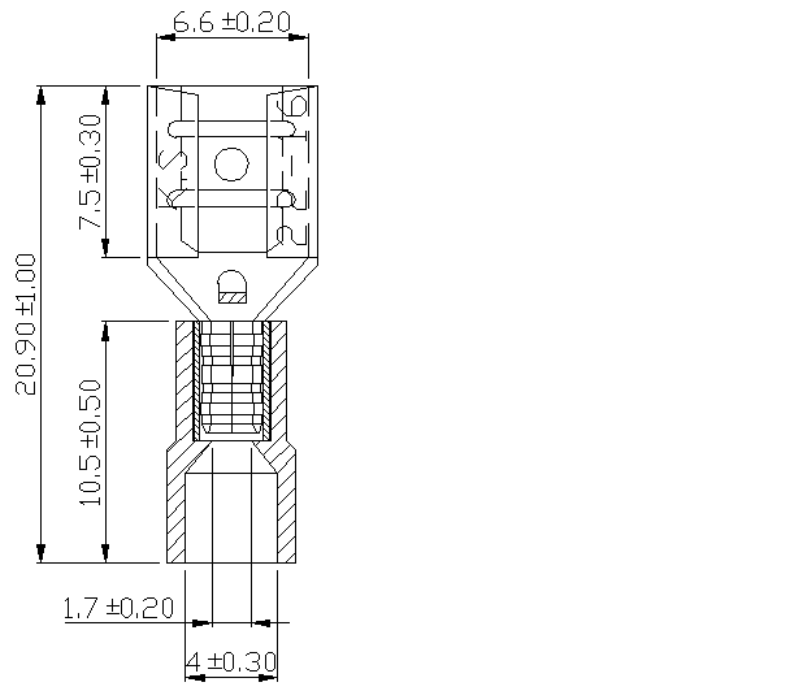
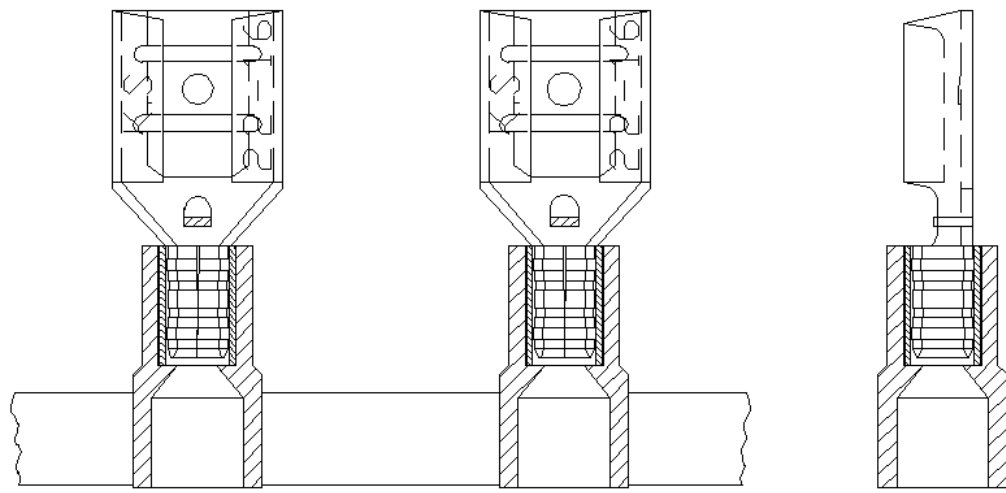


REV	DESCRIPTION	DATE
-----	-------------	------



- NOTE :
1. MAXIMUM ELECTRIC CURRENT :

A.W.G.	22	20	18	16
A.M.P.	3	4	7	10
 2. MAXMUM ELECTRICAL RATING : 105°C 600 VOLTS MAX.
 3. INSULATION MATERIAL : NYLON
 4. INSULATION COLOR : red
 5. DOUBLE CRIMP : WITH SHORT COPPER SLEEVE ON BARREL
 6. TERMINAL MATERIAL : BRASS
 7. WIRE RANGE : 22-16 A.W.G. (0.5-1.5 mm²)



Tolerance Unless Otherwise Specified	
0 > 6 mm ± 0.20	ANGLE
6 > 18 mm ± 0.30	° REF ±
18 > 30 mm ± 0.40	" ±
30 > 75 mm ± 0.50	" ±

NAME	NYLON-INSULATED DOUBLE CRIMP FEMALE DISCONNECTORS - PS SERIES			UNIT	mm	
PART NO.	FDXDX1-250-PS	MATERIAL	-----	APPROVE	张馨尹	
NUMBER	KA-95064-C	SCALE	SHEET	PAGE	CHECKED	林晓冯
DATE	2006/02/16	3/1	1-0	10F1	DRAWN	张馨尹

KST K.S. TERMINALS INC.